

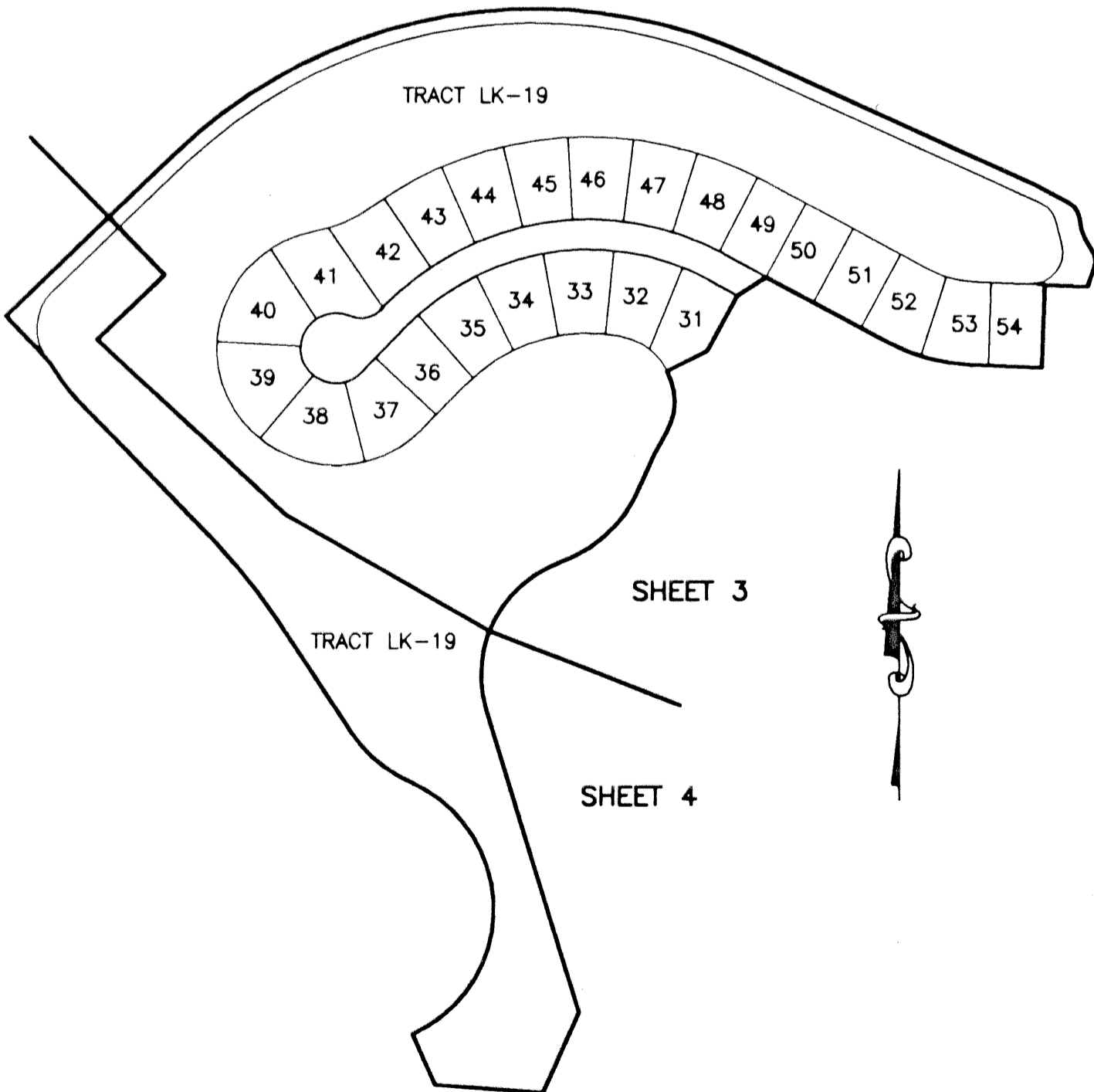
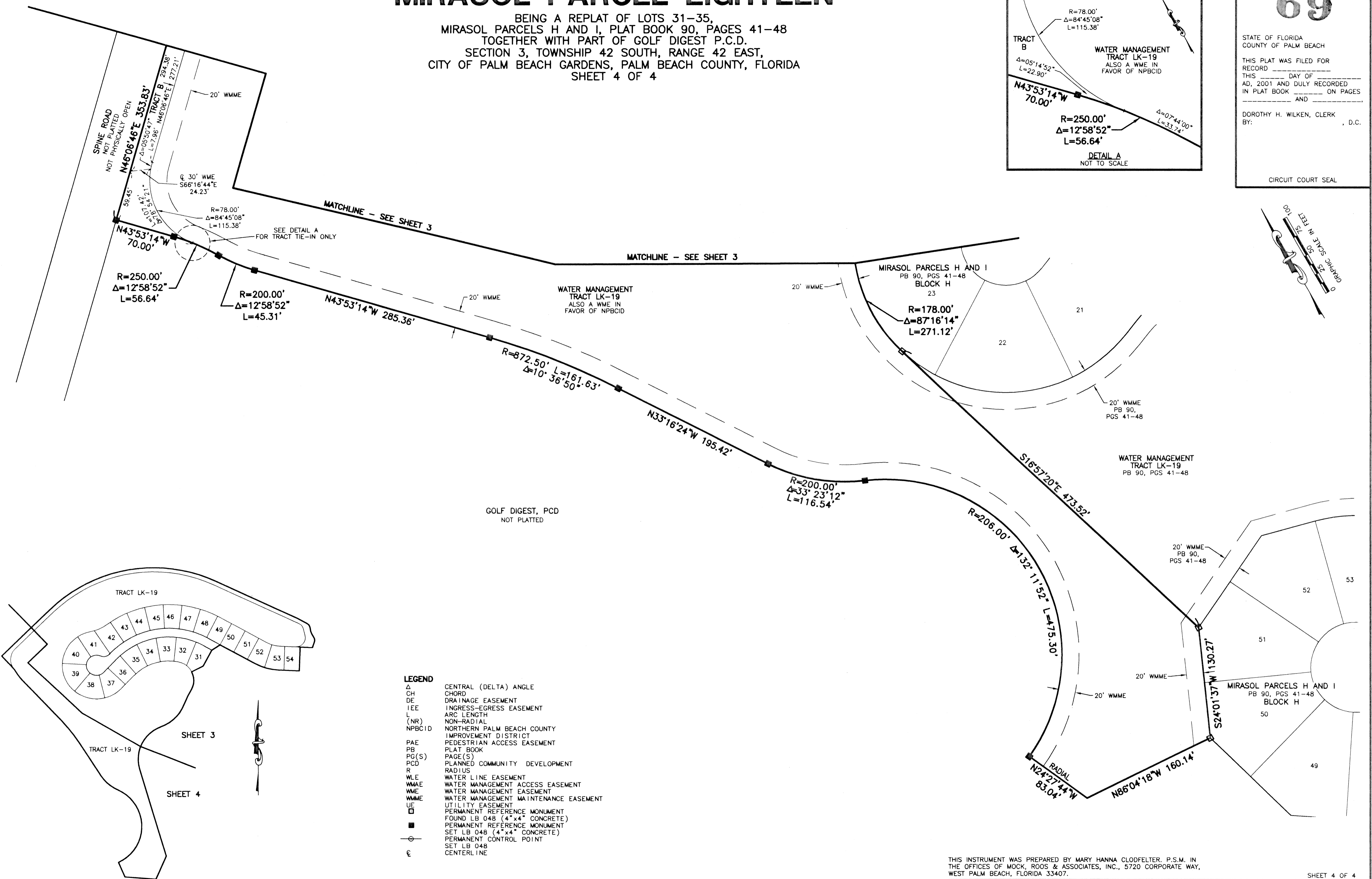
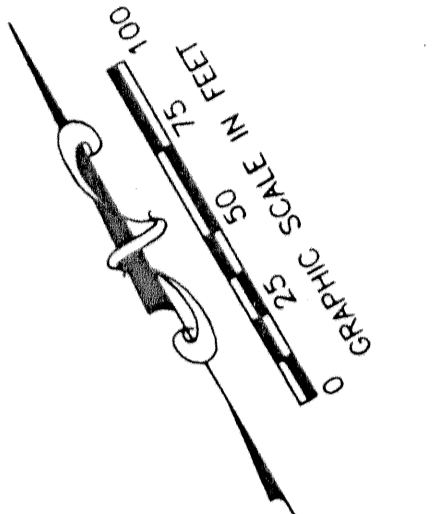
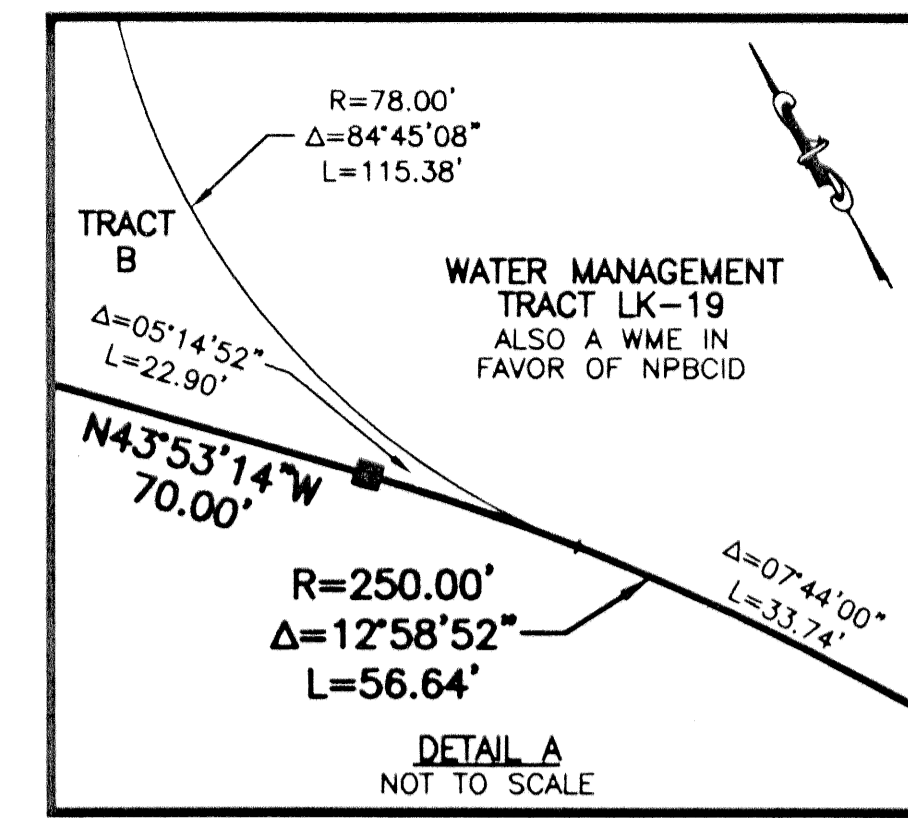
# MIRASOL PARCEL EIGHTEEN

BEING A REPLAT OF LOTS 31-35,  
MIRASOL PARCELS H AND I, PLAT BOOK 90, PAGES 41-48  
TOGETHER WITH PART OF GOLF DIGEST P.C.D.  
SECTION 3, TOWNSHIP 42 SOUTH, RANGE 42 EAST,  
CITY OF PALM BEACH GARDENS, PALM BEACH COUNTY, FLORIDA  
SHEET 4 OF 4

# 69

STATE OF FLORIDA  
COUNTY OF PALM BEACH  
THIS PLAT WAS FILED FOR  
RECORD \_\_\_\_\_ DAY OF \_\_\_\_\_  
AD, 2001 AND DULY RECORDED  
IN PLAT BOOK \_\_\_\_\_ ON PAGES  
\_\_\_\_\_ AND \_\_\_\_\_  
DOROTHY H. WILKEN, CLERK  
BY: \_\_\_\_\_, D.C.

CIRCUIT COURT SEAL



- LEGEND**
- Δ CENTRAL (DELTA) ANGLE
  - CH CHORD
  - DE DRAINAGE EASEMENT
  - IEE INGRESS-EGRESS EASEMENT
  - L ARC LENGTH
  - (NR) NON-RADIAL
  - NPBCID NORTHERN PALM BEACH COUNTY IMPROVEMENT DISTRICT
  - PAE PEDESTRIAN ACCESS EASEMENT
  - PB PLAT BOOK
  - PG(S) PAGE(S)
  - PCD PLANNED COMMUNITY DEVELOPMENT
  - R RADIUS
  - WLE WATER LINE EASEMENT
  - WMAE WATER MANAGEMENT ACCESS EASEMENT
  - WME WATER MANAGEMENT EASEMENT
  - WMME WATER MANAGEMENT MAINTENANCE EASEMENT
  - UE UTILITY EASEMENT
  - PERMANENT REFERENCE MONUMENT FOUND LB 048 (4" x 4" CONCRETE)
  - PERMANENT REFERENCE MONUMENT SET LB 048 (4" x 4" CONCRETE)
  - PERMANENT CONTROL POINT
  - ⊙ SET LB 048 CENTERLINE

THIS INSTRUMENT WAS PREPARED BY MARY HANNA CLODFELTER, P.S.M. IN THE OFFICES OF MOCK, ROOS & ASSOCIATES, INC., 5720 CORPORATE WAY, WEST PALM BEACH, FLORIDA 33407.

SHEET 4 OF 4

SCALE:	1" = 50'
P.A. NO.:	99357.00
DATE:	JUNE 2001
DRAWING NO.:	42-42-03-62

FLORIDA L.B. NO. 48

**MOCK • ROOS**

ENGINEERS • SURVEYORS • PLANNERS

5720 Corporate Way, West Palm Beach, Florida 33407  
(561) 683-3113, fax 478-7248

**MIRASOL PARCEL EIGHTEEN**  
BEING A REPLAT OF LOTS 31-35,  
MIRASOL PARCELS H AND I,  
PLAT BOOK 90, PAGES 41-48  
TOGETHER WITH  
PART OF GOLF DIGEST P.C.D.  
SECTION 3, TOWNSHIP 42 SOUTH, RANGE 42 EAST,  
CITY OF PALM BEACH GARDENS,  
PALM BEACH COUNTY, FLORIDA

REV. : 07-26-01  
CAD FILE:  
TAYLPAH\PAHRP09