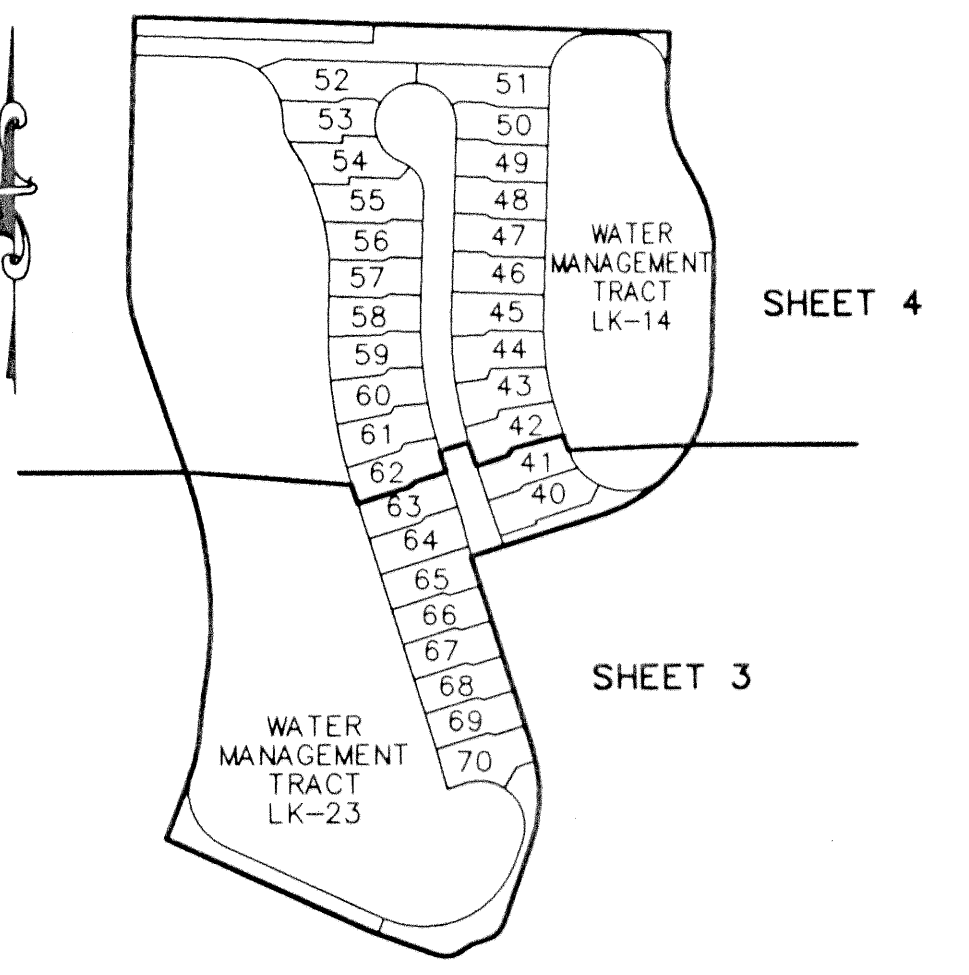
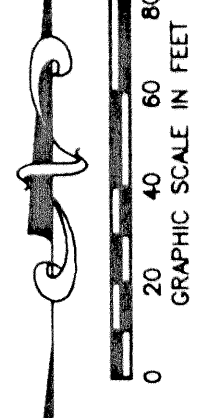


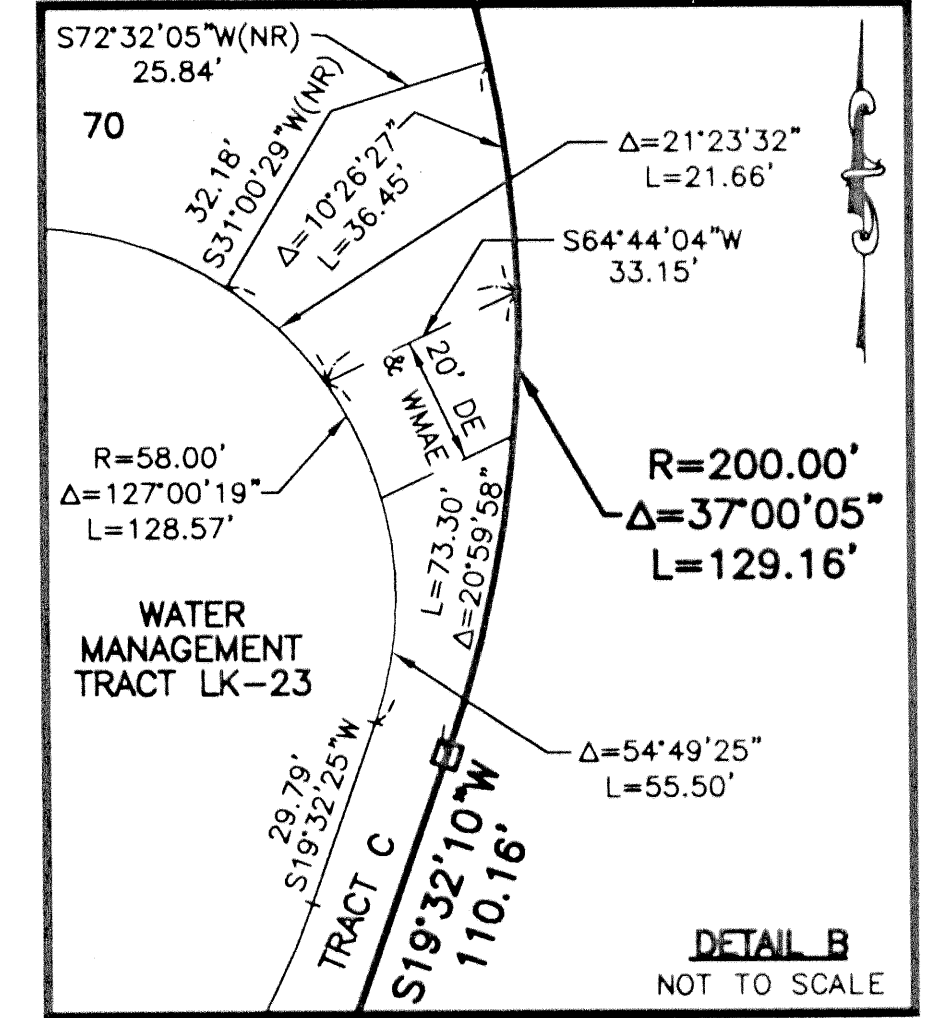
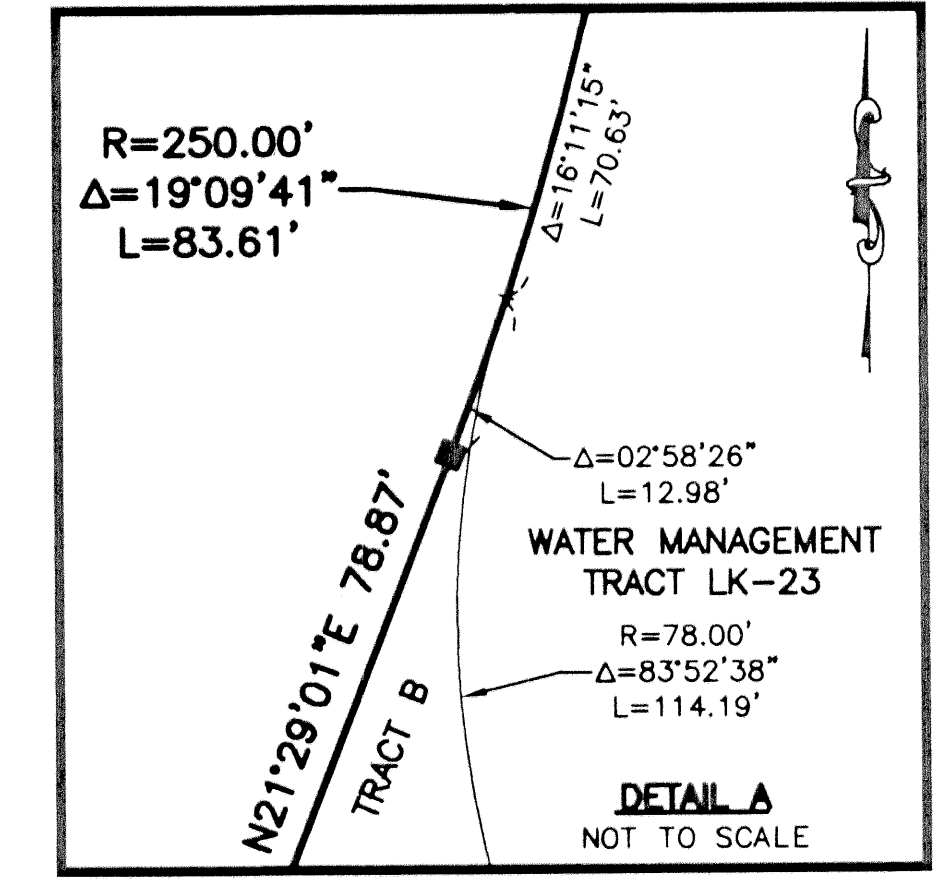
STATE OF FLORIDA  
COUNTY OF PALM BEACH  
THIS PLAT WAS FILED FOR  
RECORD THIS DAY OF  
AD, 2001 AND DULY RECORDED  
IN PLAT BOOK ON PAGES  
AND ON PAGES  
DOROTHY H. WILKEN, CLERK  
BY:



SHEET LOCATION MAP  
NOT TO SCALE

# MIRASOL PARCEL TWENTY

PART OF GOLF DIGEST P.C.D.  
SECTION 3, TOWNSHIP 42 SOUTH, RANGE 42 EAST,  
CITY OF PALM BEACH GARDENS,  
PALM BEACH COUNTY, FLORIDA  
SHEET 3 OF 4

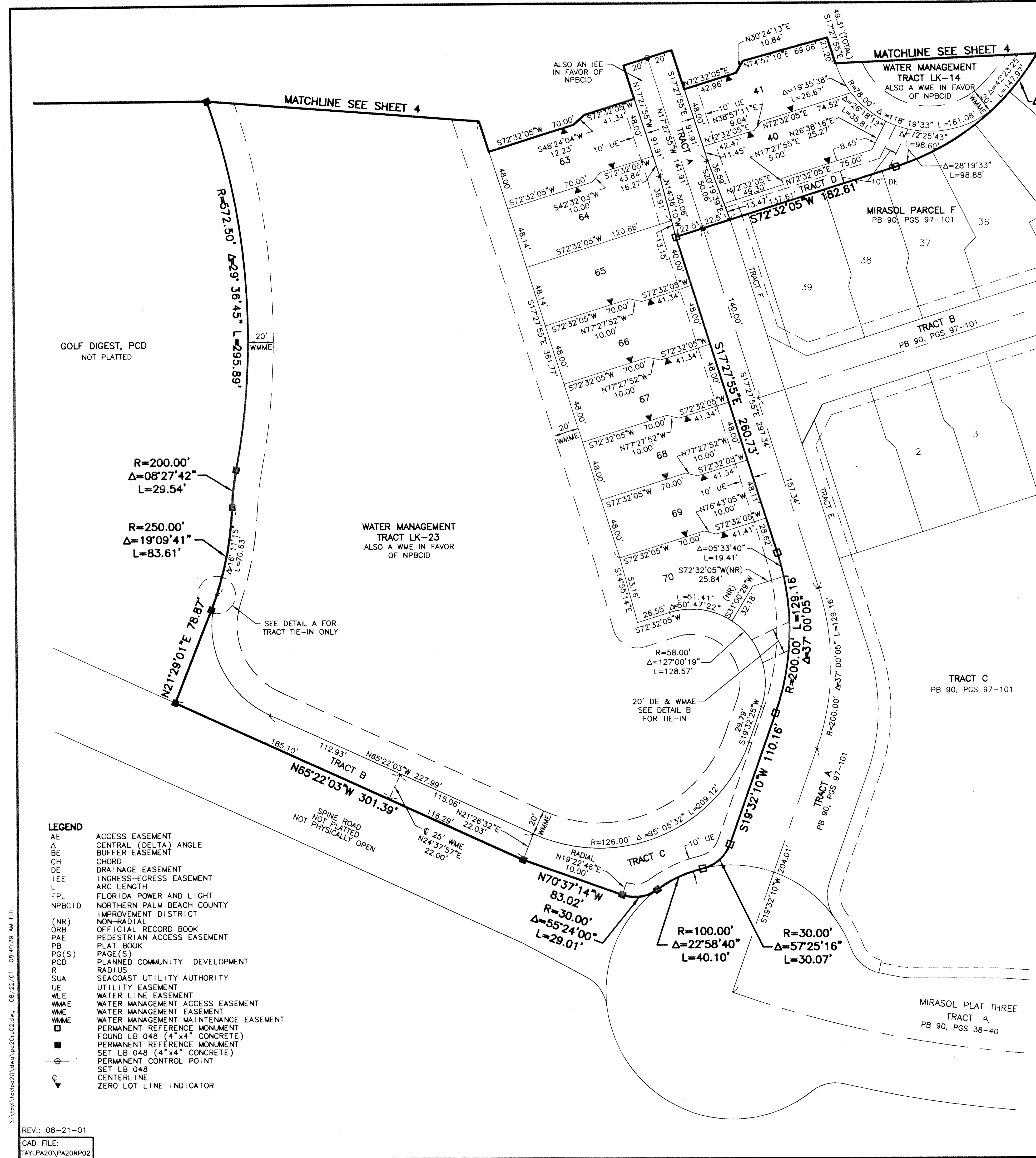


THIS INSTRUMENT WAS PREPARED BY MARY HANNA CLODFELTER, P.S.M. IN THE OFFICES OF MOCK, ROOS & ASSOCIATES, INC., 5720 CORPORATE WAY, WEST PALM BEACH, FLORIDA 33407.

SCALE:  
1"=40'  
P.A. NO.:  
99356.00  
DATE:  
MAY, 2001  
DRAWING NO.  
42-42-03-59

FLORIDA L.B. NO. 48  
**MOCK • ROOS**  
ENGINEERS • SURVEYORS • PLANNERS  
5720 Corporate Way, West Palm Beach, Florida 33407  
(561) 683-3113, fax 478-7248

**MIRASOL PARCEL TWENTY**  
PART OF GOLF DIGEST P.C.D.  
SITUATE IN SECTION 3,  
TOWNSHIP 42 SOUTH, RANGE 42 EAST,  
CITY OF PALM BEACH GARDENS,  
PALM BEACH COUNTY, FLORIDA



- LEGEND**
- AE ACCESS EASEMENT
  - Δ CENTRAL (DELTA) ANGLE
  - BE BUFFER EASEMENT
  - CH CHORD
  - DE DRAINAGE EASEMENT
  - IEE INGRESS-EGRESS EASEMENT
  - L ARC LENGTH
  - FPL FLORIDA POWER AND LIGHT
  - NPBCID NORTHERN PALM BEACH COUNTY IMPROVEMENT DISTRICT
  - (NR) NON-RADIAL
  - ORB OFFICIAL RECORD BOOK
  - PAE PEDESTRIAN ACCESS EASEMENT
  - PB PLAT BOOK
  - PG(S) PAGE(S)
  - PCD PLANNED COMMUNITY DEVELOPMENT
  - R RADIUS
  - SUA SEACOAST UTILITY AUTHORITY
  - UE UTILITY EASEMENT
  - WLE WATER LINE EASEMENT
  - WMAE WATER MANAGEMENT ACCESS EASEMENT
  - WME WATER MANAGEMENT EASEMENT
  - WMAE WATER MANAGEMENT MAINTENANCE EASEMENT
  - PMR PERMANENT REFERENCE MONUMENT
  - FOUND LB 048 (4"x4" CONCRETE)
  - PMR PERMANENT REFERENCE MONUMENT
  - SET LB 048 (4"x4" CONCRETE)
  - PCP PERMANENT CONTROL POINT
  - SET LB 048
  - CL CENTERLINE
  - ZLI ZERO LOT LINE INDICATOR