

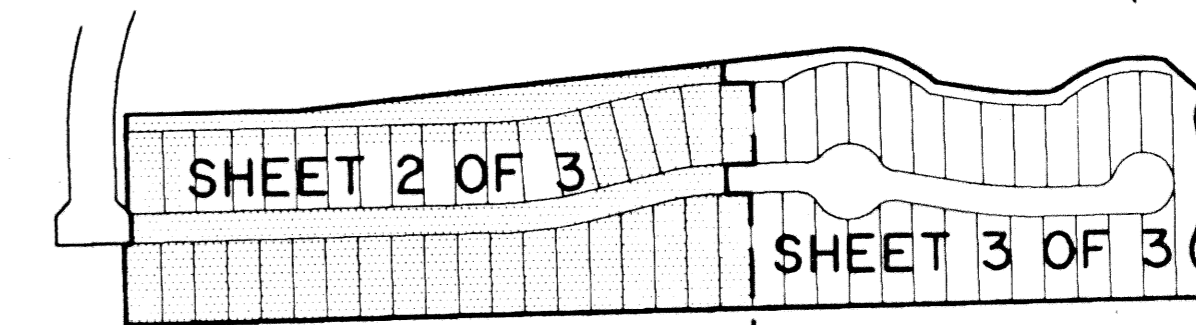
# DELRAY TRAINING CENTER P.U.D. - PARCEL G

A PLANNED UNIT DEVELOPMENT  
 BEING A REPLAT OF TRACT "FD-3", DELRAY TRAINING CENTER - PLAT ONE, AS RECORDED IN  
 PLAT BOOK 86, PAGES 60 THROUGH 67, PUBLIC RECORDS OF PALM BEACH COUNTY,  
 FLORIDA, LYING IN SECTION 29, TOWNSHIP 46 SOUTH,  
 RANGE 42 EAST, PALM BEACH COUNTY, FLORIDA.

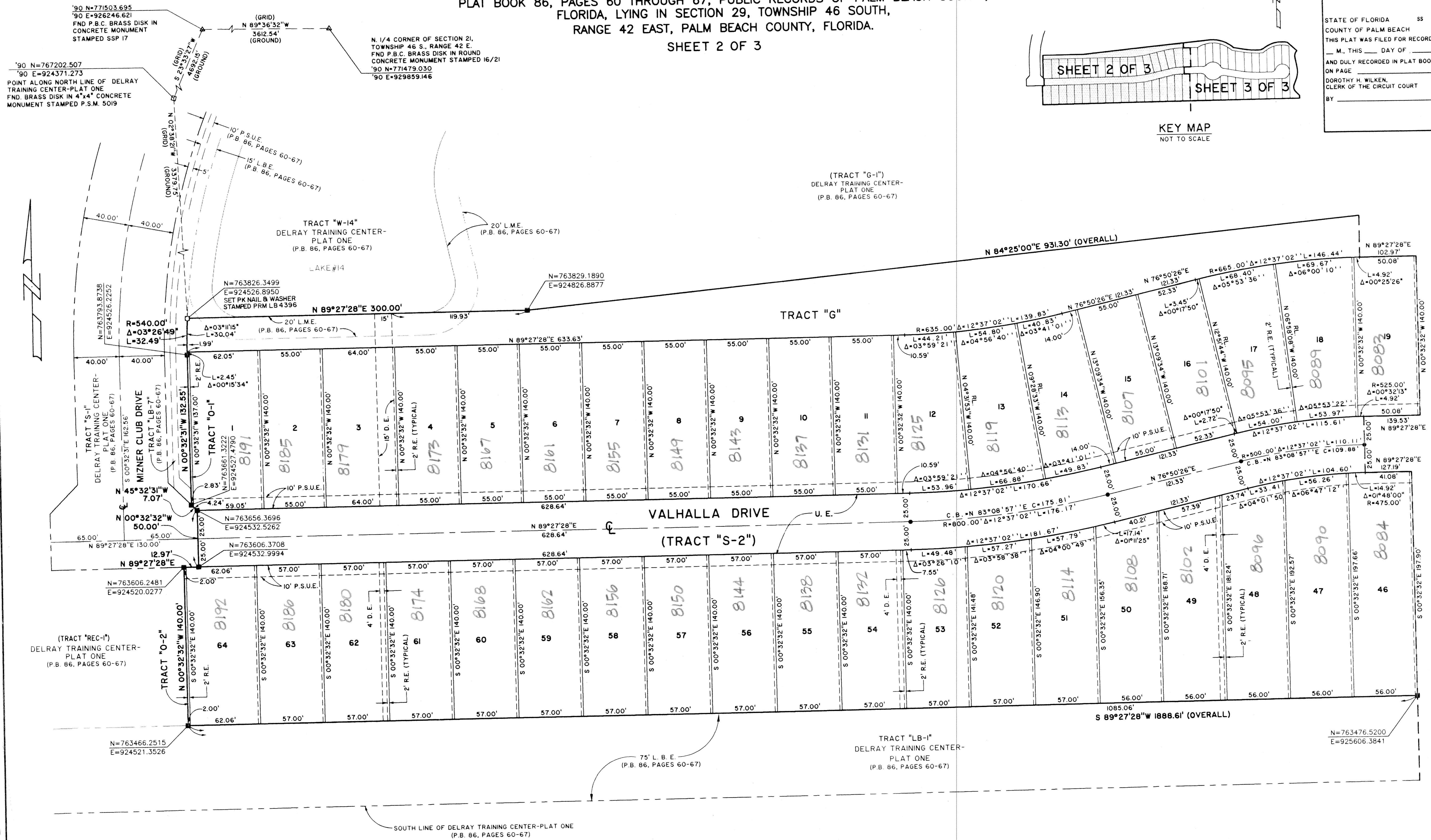
SHEET 2 OF 3

76

STATE OF FLORIDA 55  
 COUNTY OF PALM BEACH  
 THIS PLAT WAS FILED FOR RECORD AT \_\_\_\_\_  
 M., THIS \_\_\_\_\_ DAY OF \_\_\_\_\_ 2001  
 AND DULY RECORDED IN PLAT BOOK NO. \_\_\_\_\_  
 ON PAGE \_\_\_\_\_  
 DOROTHY H. WILKEN,  
 CLERK OF THE CIRCUIT COURT  
 BY \_\_\_\_\_ D.C.



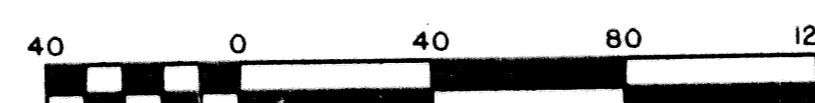
KEY MAP  
 NOT TO SCALE



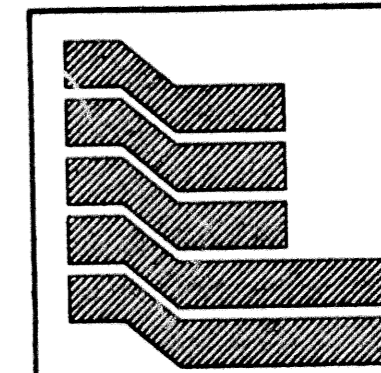
SUBDIVISION DELRAY TRAINING CENTER P.U.D., PHASE G  
 BOOK 92  
 FLOOD MAP # 2154  
 ZONING PUD  
 QUAD # 52  
 SE  
 TAZ 762  
 FUD NAME

**COORDINATE NOTE:**

STATE PLANE COORDINATES SHOWN ARE GRID DATUM, NAD 83 1990  
 ADJUSTMENT, FLORIDA EAST ZONE, COORDINATE SYSTEM 1983 STATE  
 PLANE, TRANSVERSE MERCATOR PROJECTION  
 LINEAR UNIT = US SURVEY FEET  
 ALL DISTANCES ARE GROUND  
 SCALE FACTOR = 1.000020427035  
 GROUND DISTANCE X SCALE FACTOR = GRID DISTANCE  
 BEARINGS AS SHOWN HEREON ARE GRID DATUM, NAD 83 1990  
 ADJUSTMENT, FLORIDA EAST ZONE.



Scale 1" = 40'



Landmark Surveying & Mapping Inc.  
 1850 Forest Hill Boulevard  
 Ph. (561) 433-5405 Suite 100 W.P.B. Florida  
 LB # 4396

DELRAY TRAINING CENTER P.U.D.-PARCEL G

MATCH TO SHEET 3

MATCH TO SHEET 3