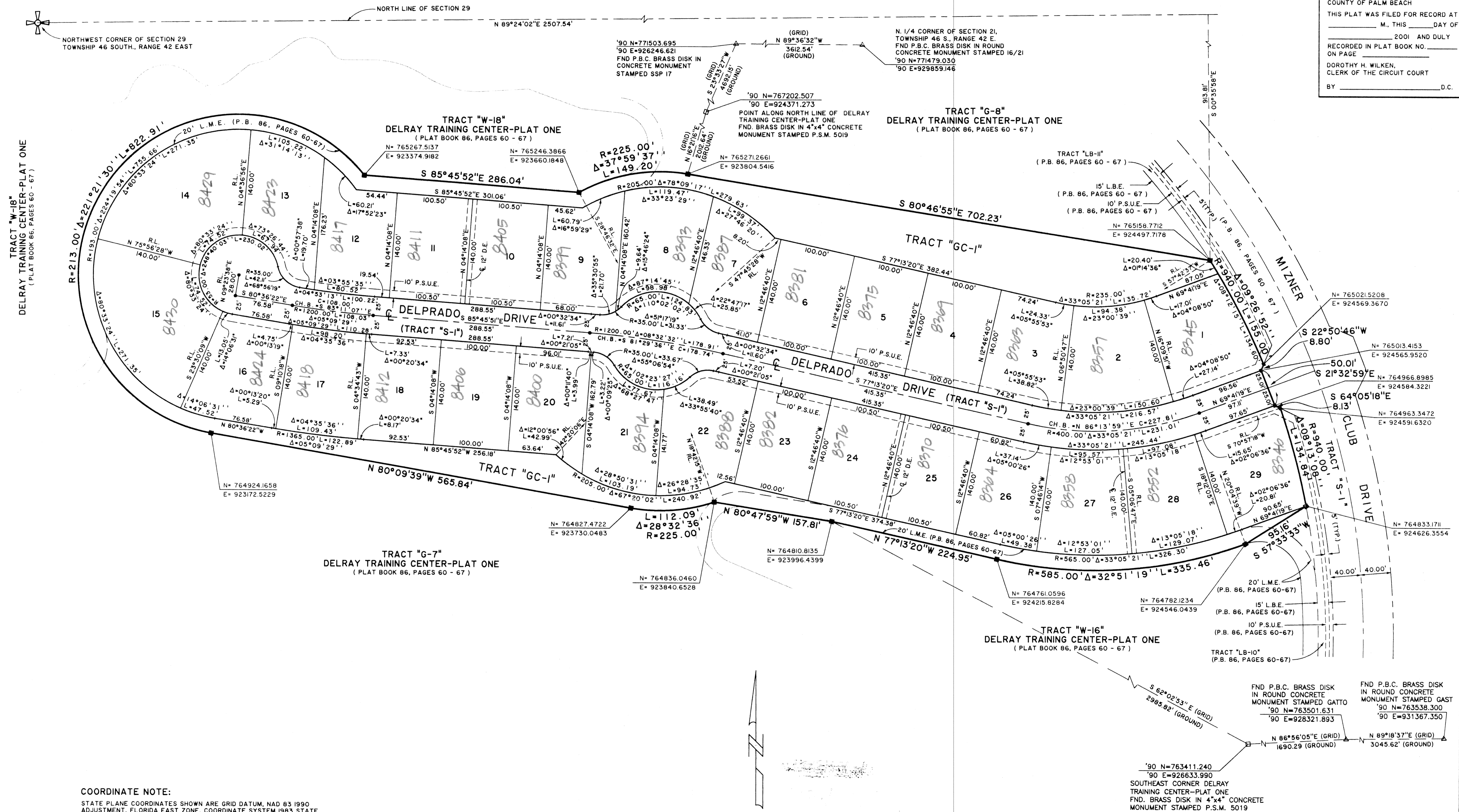


DELRAY TRAINING CENTER P.U.D. - PARCEL H

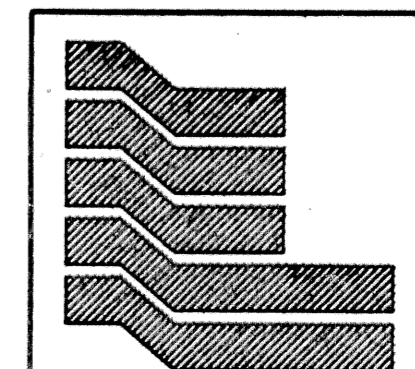
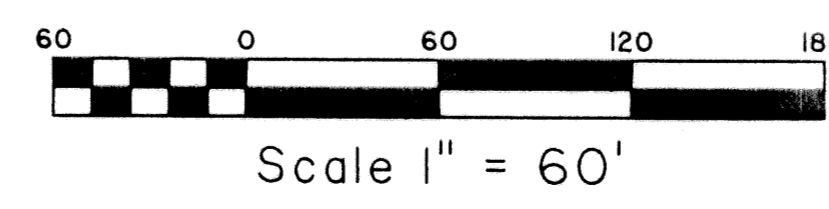
A PLANNED UNIT DEVELOPMENT
 BEING A REPLAT OF TRACT "FD-6", DELRAY TRAINING CENTER - PLAT ONE, AS
 RECORDED IN PLAT BOOK 86, PAGES 60 THROUGH 67, PUBLIC RECORDS OF
 PALM BEACH COUNTY, FLORIDA, LYING IN SECTION 29, TOWNSHIP
 46 SOUTH, RANGE 42 EAST, PALM BEACH COUNTY, FLORIDA.
 SHEET 2 OF 2

79

STATE OF FLORIDA §§
 COUNTY OF PALM BEACH
 THIS PLAT WAS FILED FOR RECORD AT
 _____ M. THIS _____ DAY OF _____
 _____ 2001 AND DULY
 RECORDED IN PLAT BOOK NO. _____
 ON PAGE _____
 DOROTHY H. WILKEN,
 CLERK OF THE CIRCUIT COURT
 BY _____ D.C.



COORDINATE NOTE:
 STATE PLANE COORDINATES SHOWN ARE GRID DATUM, NAD 83 1990
 ADJUSTMENT, FLORIDA EAST ZONE, COORDINATE SYSTEM 1983 STATE
 PLANE, TRANSVERSE MERCATOR PROJECTION
 LINEAR UNIT = US SURVEY FEET
 ALL DISTANCES ARE GROUND
 SCALE FACTOR = 1.000020427035
 GROUND DISTANCE X SCALE FACTOR = GRID DISTANCE
 BEARINGS AS SHOWN HEREON ARE GRID DATUM, NAD 83 1990
 ADJUSTMENT, FLORIDA EAST ZONE.



Landmark Surveying & Mapping Inc.
 1850 Forest Hill Boulevard
 Ph. (561) 433-5405 Suite 100 W.P.B. Florida
 LB # 4396

DELRAY TRAINING CENTER P.U.D. - PARCEL H

SUBDIVISION: Delray Training Center P.U.D., Parcel H
 PAGE: 79
 FLOOD MAP # 215A
 ZONING: PUD
 QUAD # 57
 SE
 TAZ: 702
 PUD NAME: