

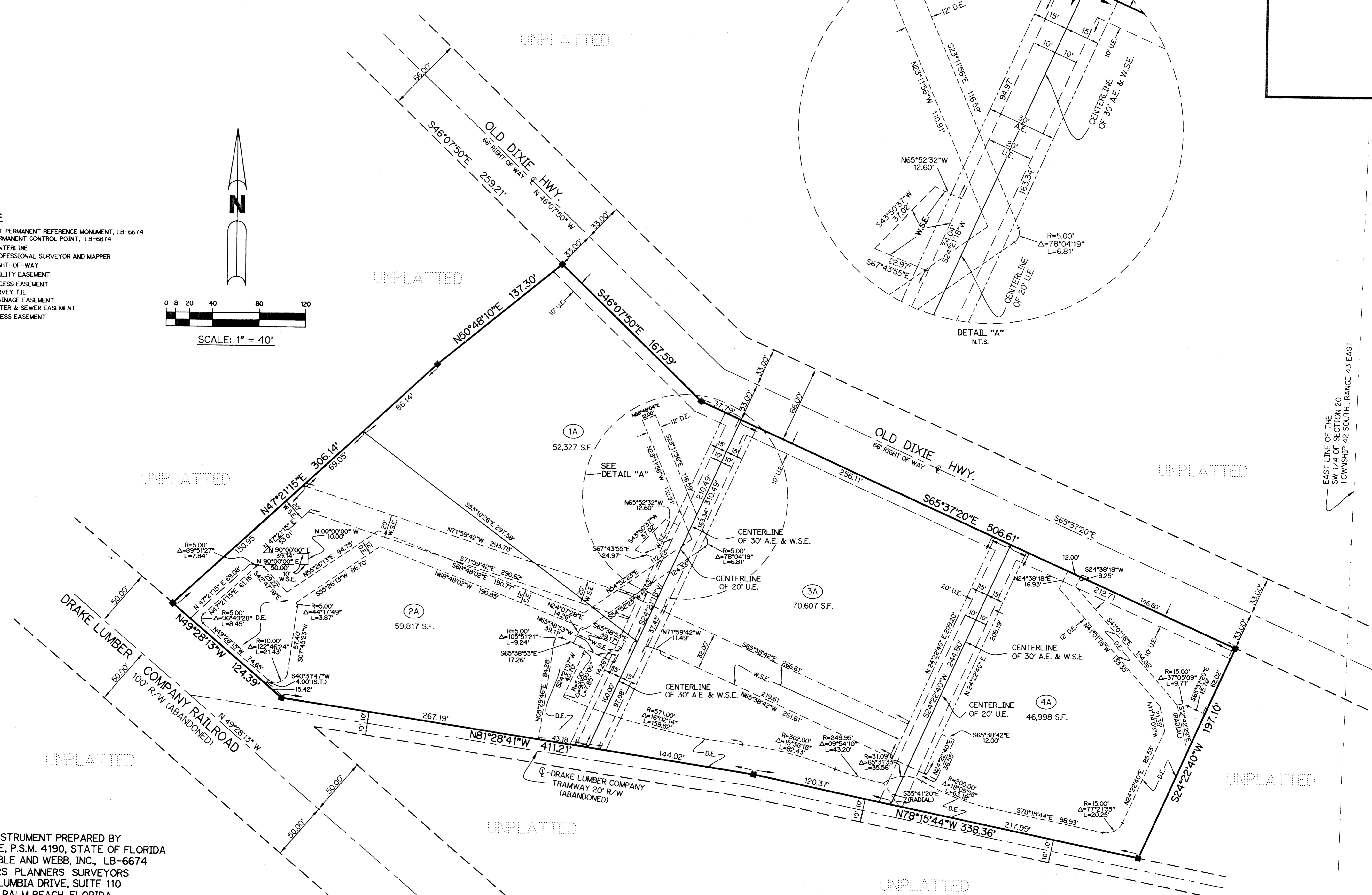
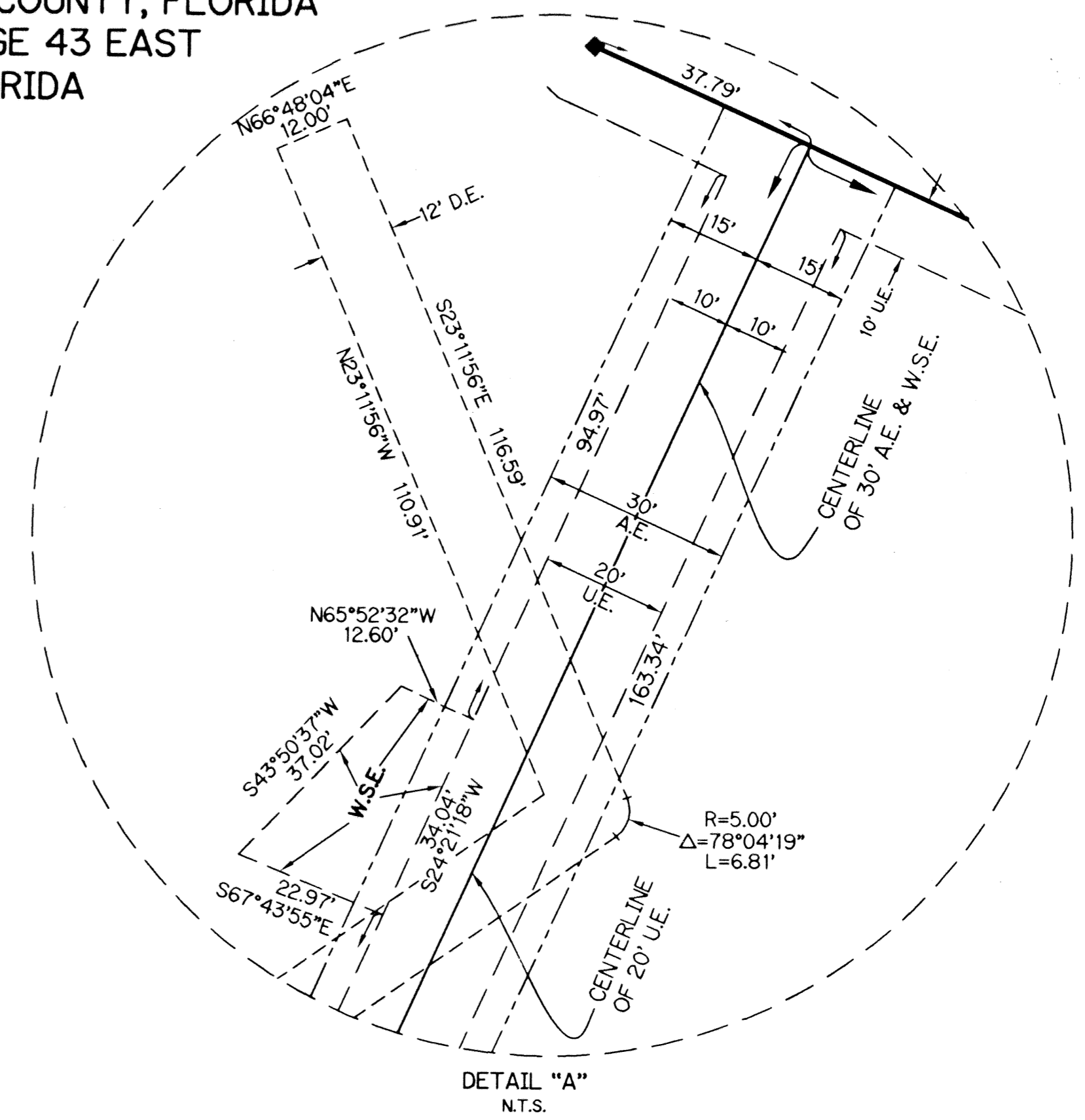
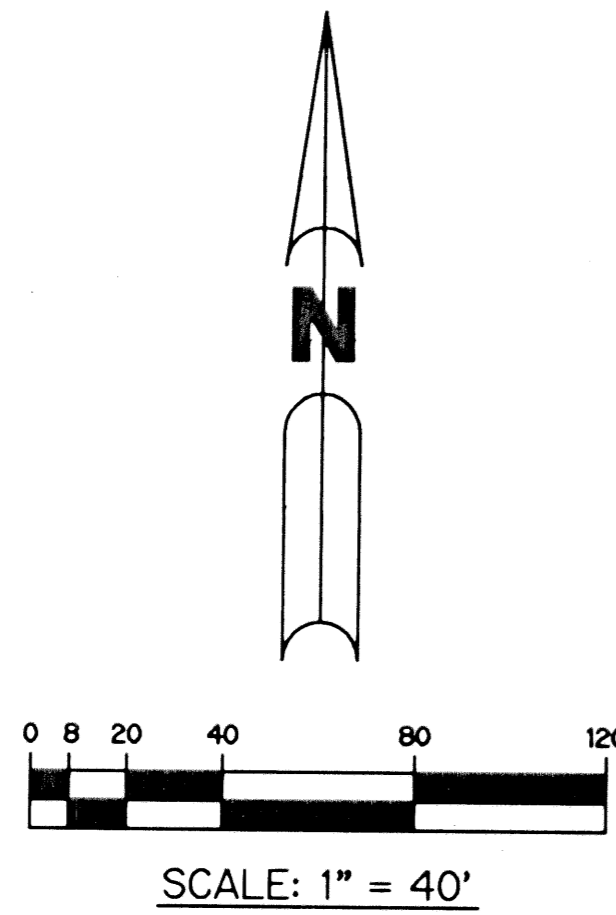
# KELSEY BUSINESS PARK - REPLAT

BEING A REPLAT OF ALL OF KELSEY BUSINESS PARK, AS RECORDED IN PLAT BOOK 89,  
 PAGES 59 AND 60 OF THE PUBLIC RECORDS OF PALM BEACH COUNTY, FLORIDA  
 AND LYING IN SECTION 20, TOWNSHIP 42 SOUTH, RANGE 43 EAST  
 TOWN OF LAKE PARK, PALM BEACH COUNTY FLORIDA

SHEET 2 OF 2 MAY, 2001

**LEGEND:**

- - SET PERMANENT REFERENCE MONUMENT, LB-6674
- - PERMANENT CONTROL POINT, LB-6674
- ⊕ - CENTERLINE
- P.S.M. - PROFESSIONAL SURVEYOR AND MAPPER
- R/W - RIGHT-OF-WAY
- U.E. - UTILITY EASEMENT
- A.E. - ACCESS EASEMENT
- S.T. - SURVEY TIE
- D.E. - DRAINAGE EASEMENT
- W.S.E. - WATER & SEWER EASEMENT
- A.E. - ACCESS EASEMENT



EAST LINE OF THE SW 1/4 OF SECTION 20 TOWNSHIP 42 SOUTH, RANGE 43 EAST

THIS INSTRUMENT PREPARED BY  
 WILBUR F. DIVINE, P.S.M. 4190, STATE OF FLORIDA  
 LAWSON, NOBLE AND WEBB, INC., LB-6674  
 ENGINEERS PLANNERS SURVEYORS  
 420 COLUMBIA DRIVE, SUITE 110  
 WEST PALM BEACH, FLORIDA