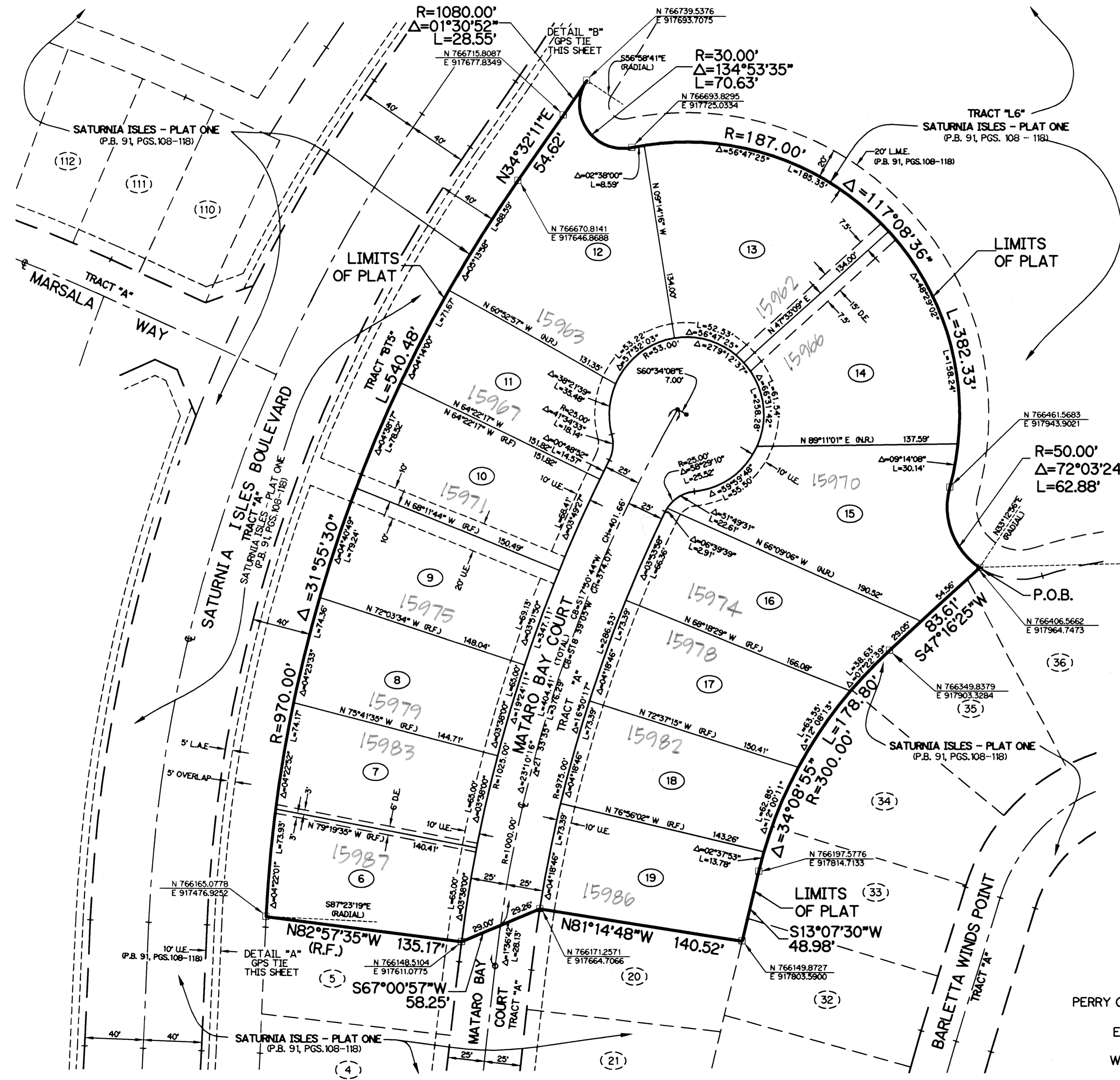
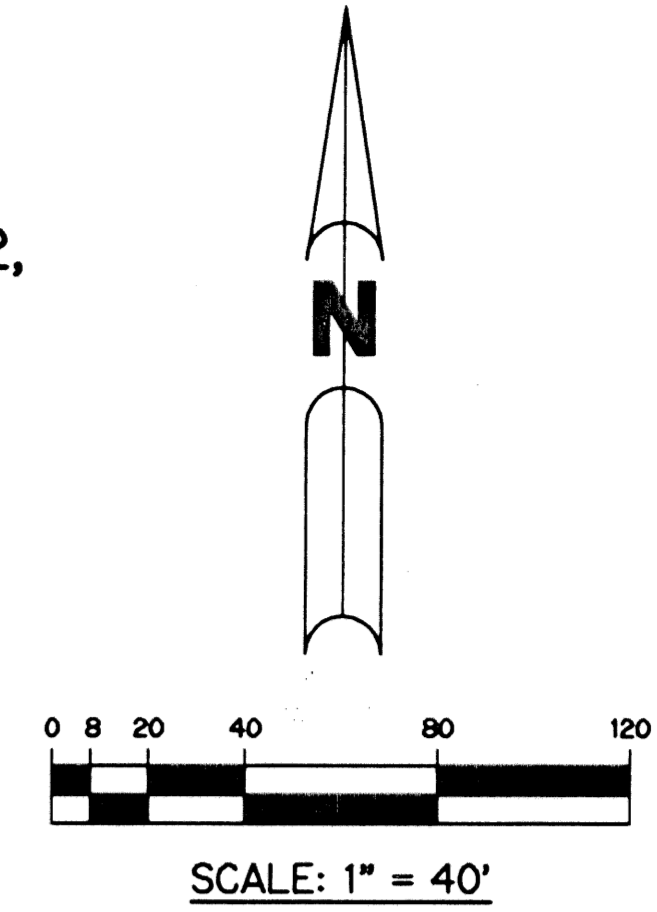


# SATURNIA ISLES - PLAT TWO

BEING A REPLAT OF A PORTION OF TRACTS 115 THROUGH 117, SECTION 19, TOWNSHIP 46 SOUTH, RANGE 42 EAST, PALM BEACH FARMS COMPANY PLAT NO. 1 AS RECORDED IN PLAT BOOK 2, PAGES 26 THROUGH 28 AND A REPLAT OF A PORTION OF BLOCK 4, MILLER'S PARK UNIT 2 AS RECORDED IN PLAT BOOK 4, PAGE 75 ALL OF THE PUBLIC RECORDS OF PALM BEACH COUNTY, FLORIDA, LYING IN SECTION 19, TOWNSHIP 46 SOUTH, RANGE 42 EAST.

SHEET 2 OF 2 DECEMBER, 2000



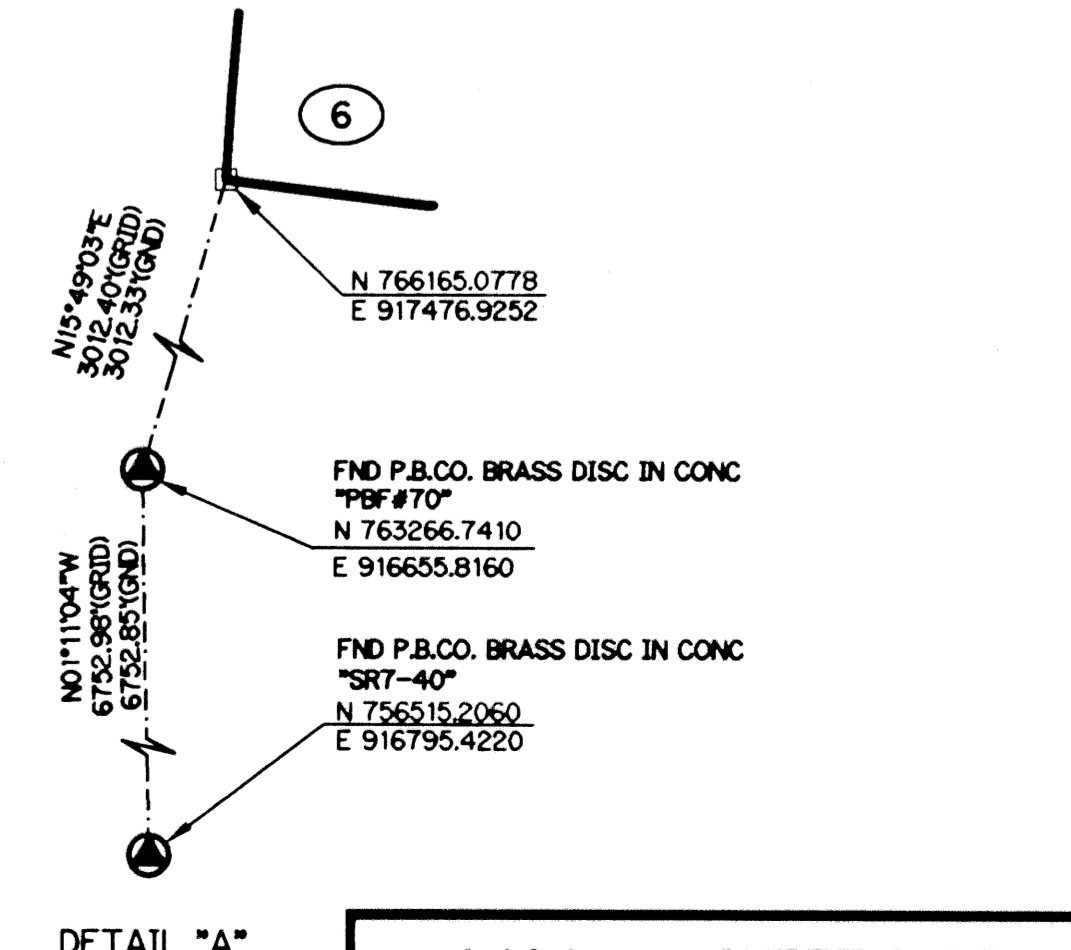
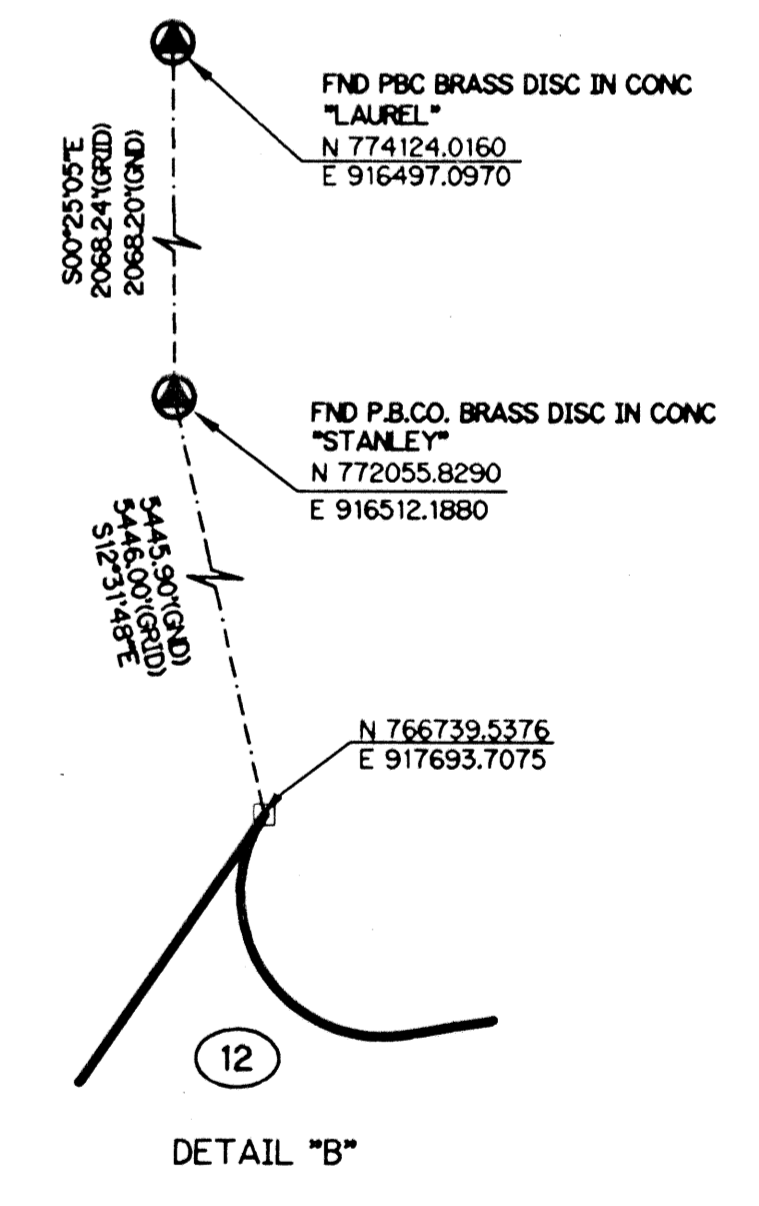
### LEGEND:

- - SET PERMANENT REFERENCE MONUMENT, L.B. #6674
- - FOUND PERMANENT REFERENCE MONUMENT, L.B. #6674
- - SET PERMANENT CONTROL POINT, L.B. #6674
- - FOUND PERMANENT CONTROL POINT, L.B. #6674
- Δ - DELTA ANGLE
- ABAND. - ABANDONED
- B.E. - BUFFER EASEMENT
- CB - CHORD BEARING
- CH - CHORD DISTANCE
- CL - CENTERLINE
- D.B. - DEED BOOK
- D.E. - DRAINAGE EASEMENT
- L - ARC LENGTH
- L.A.E. - LIMITED ACCESS EASEMENT
- L.M.A.E. - LAKE MAINTENANCE ACCESS EASEMENT
- L.M.E. - LAKE MAINTENANCE EASEMENT
- L.S.E. - LANDSCAPE EASEMENT
- L.W.D.D. - LAKE WORTH DRAINAGE DISTRICT
- N.R. - NOT RADIAL
- N.T.S. - NOT TO SCALE
- O.E. - OVERHANG EASEMENT
- OR.B. - OFFICIAL RECORD BOOK
- P.B. - PLAT BOOK
- PGS. - PAGES
- P.O.B. - POINT OF BEGINNING
- P.O.C. - POINT OF COMMENCEMENT
- P.C.C. - POINT OF COMPOUND CURVATURE
- P.C. - POINT OF CURVATURE
- P.I. - POINT OF INTERSECTION
- P.T. - POINT OF TANGENCY
- P.S.M. - PROFESSIONAL SURVEYOR AND MAPPER
- R - RADIUS
- RAD. - RADIAL
- R/W - RIGHT-OF-WAY
- S.D.E. - SWALE DRAINAGE EASEMENT
- S.T. - SURVEY TIE
- (TYP.) - TYPICAL
- U.E. - UTILITY EASEMENT
- P.B.F.C. - PALM BEACH FARMS COMPANY PLAT NO. 1 (P.B. 2, PGS. 26 - 28)
- (RF) - RADIAL TO FRONT LOT LINE
- (RR) - RADIAL TO REAR LOT LINE
- N 737648.0171 E 905258.2326 - DENOTES STATE PLANE COORDINATES

### NOTE:

COORDINATES SHOWN ARE GRID COORDINATES  
 DATUM = NAD 83 (1998 ADJUSTMENT)  
 ZONE = FLORIDA EAST ZONE  
 LINEAR UNIT = U.S. SURVEY FEET  
 COORDINATE SYSTEM = 1983 STATE PLANE TRANSVERSE MERCATOR PROJECTION  
 ALL DISTANCES ARE GROUND  
 SCALE FACTOR = 1.0000190  
 PLAT BEARING = GRID BEARING  
 NO ROTATION

THIS INSTRUMENT PREPARED BY  
 PERRY C. WHITE, P.S.M. 4213, STATE OF FLORIDA  
 LAWSON, NOBLE AND WEBB, INC.  
 ENGINEERS PLANNERS SURVEYORS  
 420 COLUMBIA DRIVE  
 WEST PALM BEACH, FLORIDA 33409  
 LB-6674



SUBMISSION: SATURNIA ISLES - PLAT 2  
 DATE: 9/21/00  
 PLAT MAP # 215 A  
 ZONING: AGR  
 ZIP CODE: 33446  
 SURVEYOR: PERRY C. WHITE  
 CLIENT: SUSSMAN AGR