

# DR PALM BEACH AMOCO PLAT

SECTIONS 18 AND 19, TOWNSHIP 43 SOUTH, RANGE 43 EAST  
CITY OF WEST PALM BEACH, PALM BEACH COUNTY, FLORIDA.  
SHEET 2 OF 2

108

STATE OF FLORIDA )  
                              SS  
COUNTY OF PALM BEACH)

THIS PLAT FILED FOR  
RECORD AT \_\_\_\_\_ M.  
THIS \_\_\_\_\_ DAY OF \_\_\_\_\_  
2001,  
AND DULY RECORDED IN  
PLAT BOOK NO. \_\_\_\_\_ ON  
PAGES \_\_\_\_\_.

DOROTHY H. WILKEN  
CLERK OF CIRCUIT COURT  
BY \_\_\_\_\_  
DEPUTY CLERK

**ABBREVIATIONS**  
O.R.B. OFFICIAL RECORDS BOOK  
PG. PAGE  
P.R.M. PERMANENT REFERENCE MONUMENT (P.L.S.#4134)  
  
P.L.S. PROFESSIONAL LAND SURVEYOR  
P.S.M. PROFESSIONAL SURVEYOR AND MAPPER  
L.B. LICENSED BUSINESS  
(D) DEED  
(C) CALCULATED

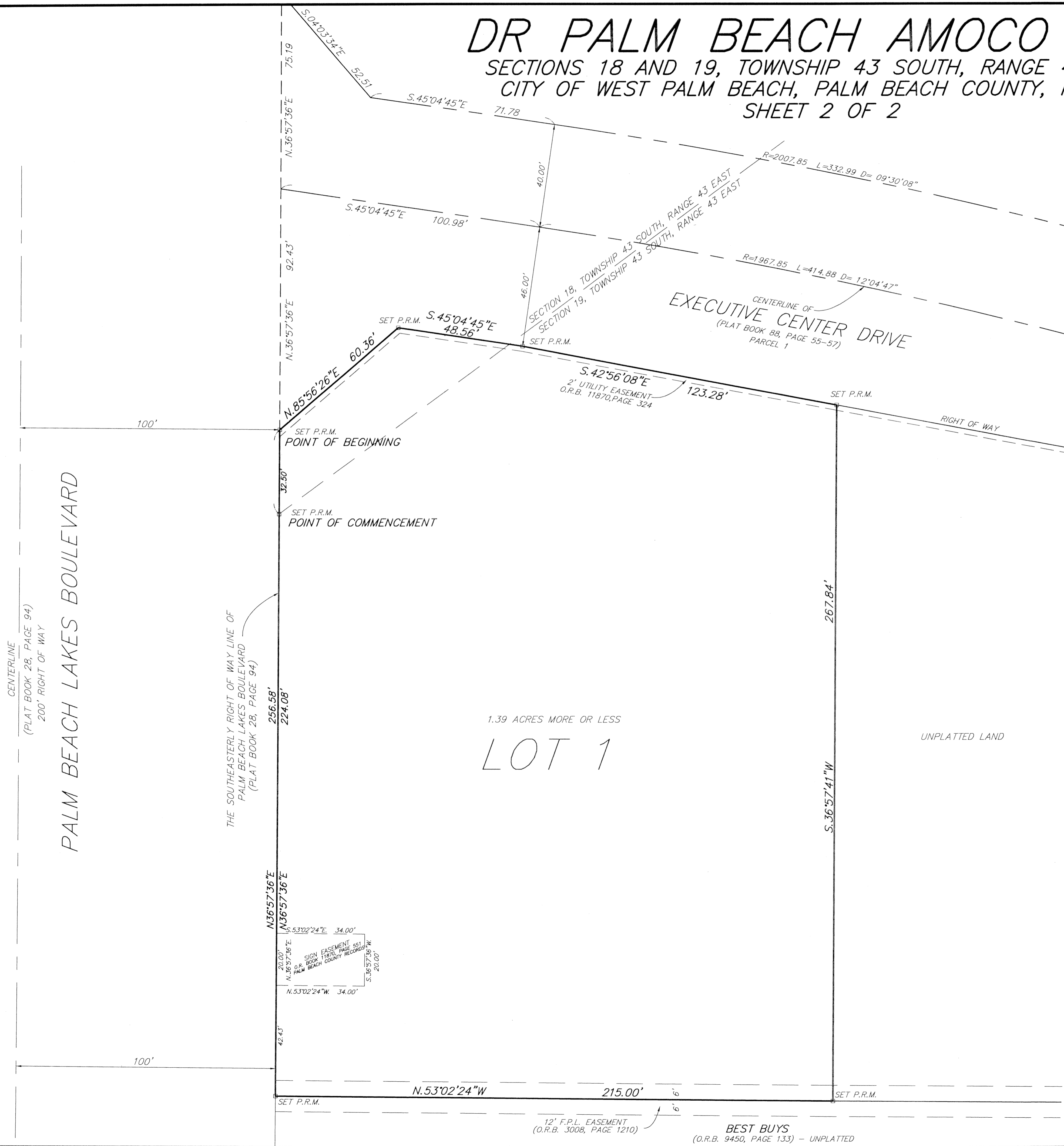
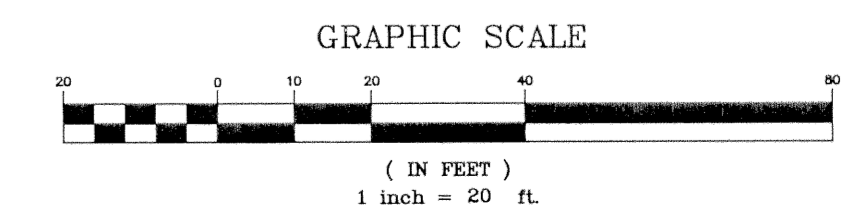
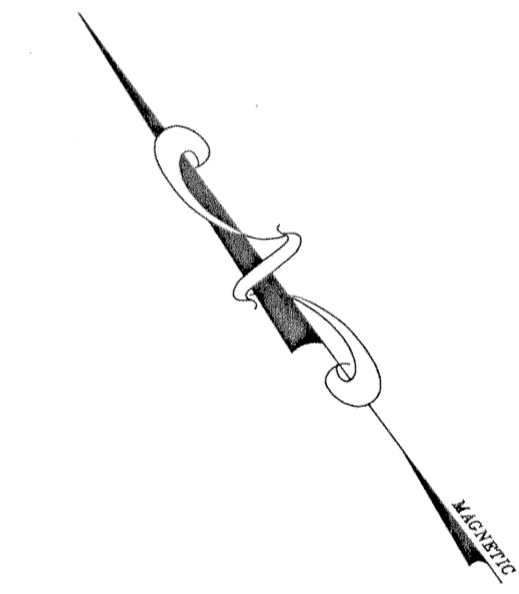
CENTERLINE  
(PLAT BOOK 28, PAGE 94)  
200' RIGHT OF WAY  
  
PALM BEACH LAKES BOULEVARD

THE SOUTHEASTERLY RIGHT OF WAY LINE OF  
PALM BEACH LAKES BOULEVARD  
(PLAT BOOK 28, PAGE 94)

CENTERLINE OF  
**EXECUTIVE CENTER DRIVE**  
(PLAT BOOK 88, PAGE 55-57)  
PARCEL 1

UNPLATTED LAND

1.39 ACRES MORE OR LESS  
**LOT 1**



12' F.P.L. EASEMENT  
(O.R.B. 3008, PAGE 1210)

**BEST BUYS**  
(O.R.B. 9450, PAGE 133) - UNPLATTED