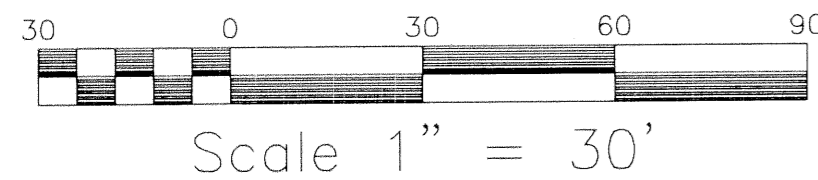
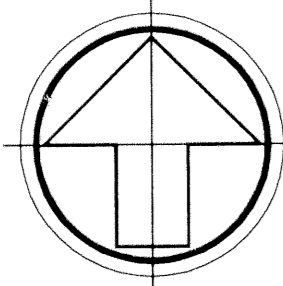


THIS INSTRUMENT PREPARED BY:
MICHAEL D. ROSE, P.S.M.

SDA SHAH DROTOS & ASSOCIATES ENGINEERING SURVEYING PLANNING

CERTIFICATE OF AUTHORIZATION NO. LB6456
1885 W. Commercial Blvd., Suite 190 • Ft. Lauderdale, FL 33309
PH: 954-776-7604 • FAX: 954-776-7608

JUNE, 2000



PARKSIDE TOWNHOMES AT DELRAY

A REPLAT OF A PORTION OF TRACTS 24, 25 AND 26, MODEL
LAND COMPANY'S SUBDIVISION OF THE NORTH HALF AND PART OF
THE SOUTH HALF OF SECTION 18, TOWNSHIP 46 SOUTH, RANGE 43 EAST,
(PLAT BOOK 6, PAGE 51, PALM BEACH COUNTY RECORDS)
CITY OF DELRAY BEACH, PALM BEACH COUNTY, FLORIDA

SHEET 3 OF 5 SHEETS

119

STATE OF FLORIDA
COUNTY OF PALM BEACH

This Plat was filed for record
at _____ M., this _____ day
of _____, 2000, and duly
recorded in Plat Book No. _____
on Pages _____ and _____

DOROTHY H. WILKEN, CLERK

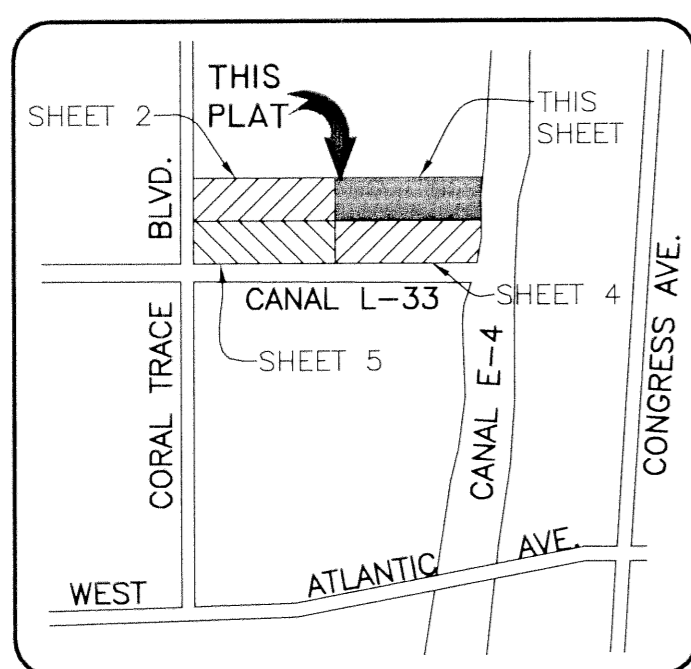
BY: _____ DC

LAND COMPANY'S
SUBDIVISION
PB. 6, PG. 51

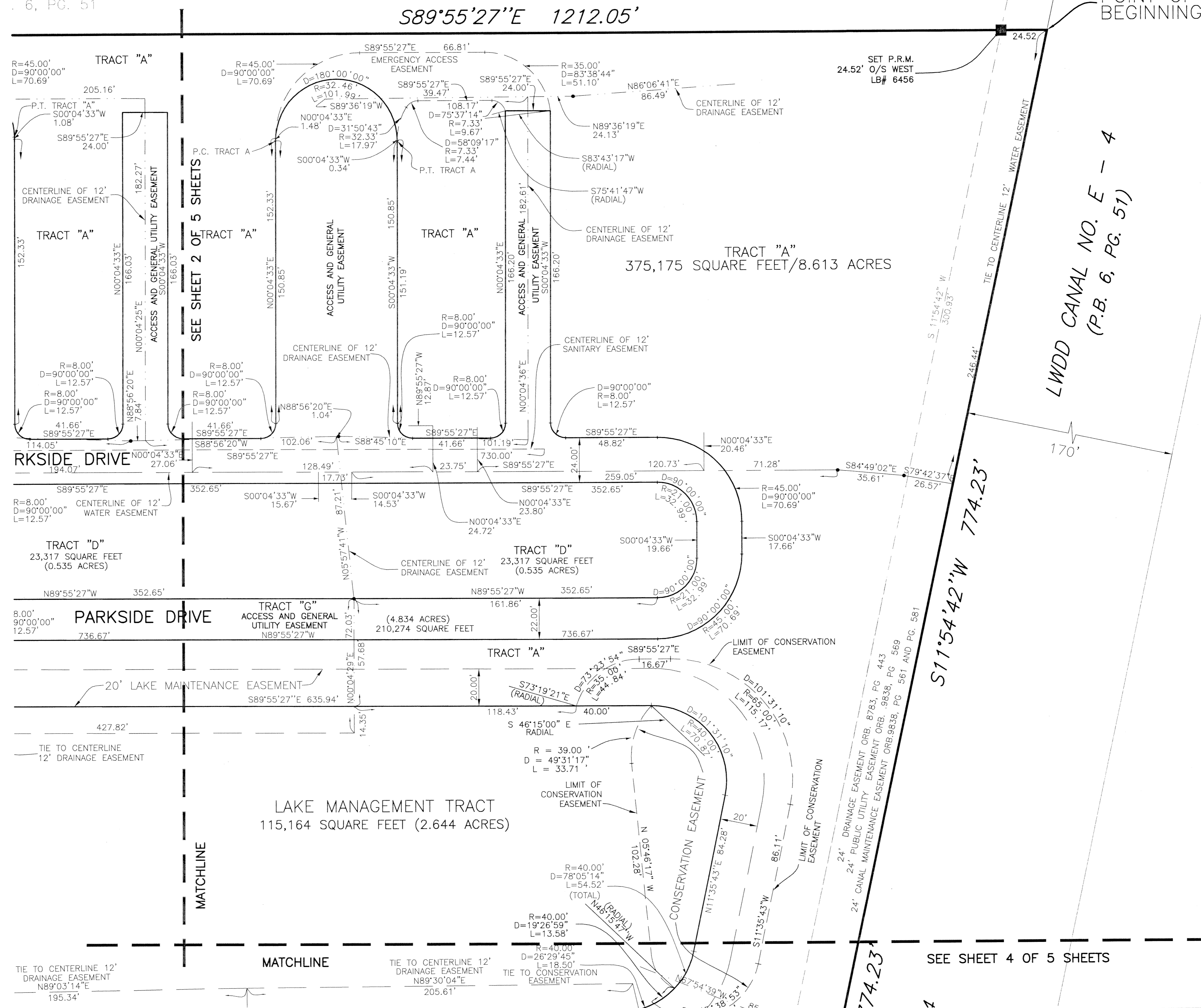
MODEL LAND COMPANY'S
SUBDIVISION
PB. 6, PG. 51

$S89^{\circ}55'27''E$ 1212.05'

- LEGEND:**
- P.R.M. = PERMANENT REFERENCE MARKER
 - GRND. = GROUND
 - P.C.P. = PERMANENT CONTROL POINT
 - SQ. = SQUARE
 - FT. = FEET
 - D. = DELTA
 - R. = RADIUS
 - L. = ARC LENGTH
 - CH. = CHORD
 - CL. = CHORD LENGTH
 - D.E. = DRAINAGE EASEMENT
 - U.E. = UTILITY EASEMENT
 - L.S.E. = LIFT STATION EASEMENT
 - L.S.A.E. = LIFT STATION ACCESS EASEMENT
 - N = 802633.75
 - E = 948233.87
 - P.B.C.R. = PALM BEACH COUNTY RECORDS
 - O.R.B. = OFFICIAL RECORD BOOK
 - PG. = PAGE
 - T. 45 = TOWNSHIP
 - R. 42 = RANGE
 - LWDD = LAKE WORTH DRAINAGE DISTRICT
 - P.C. = POINT OF CURVATURE
 - P.T. = POINT OF TANGENCY



LOCATION MAP
NOT TO SCALE



SEE SHEET 4 OF 5 SHEETS