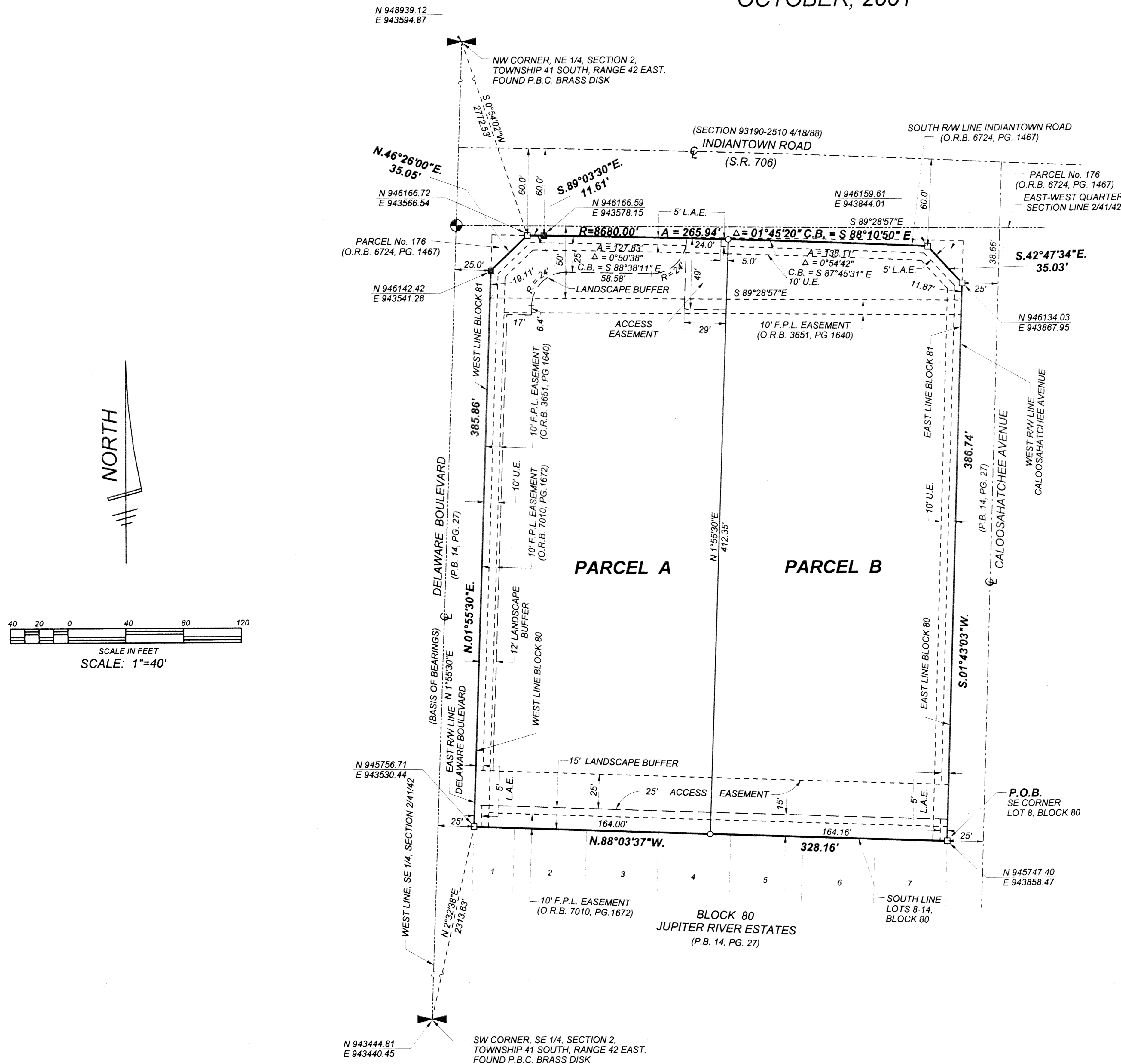


GULFSTREAM GOODWILL

BEING A REPLAT OF LOTS 8-14, BLOCK 80, LOTS 1 - 14, BLOCK 81, A PORTION OF CREEK STREET AND CENTRAL DIXIE HIGHWAY, ALL AS RECORDED IN THE PLAT OF JUPITER RIVER ESTATES, PLAT BOOK 14, PAGE 27, PUBLIC RECORDS OF PALM BEACH COUNTY, FLORIDA, LYING IN SECTION 2, TOWNSHIP 41 SOUTH, RANGE 42 EAST, TOWN OF JUPITER, PALM BEACH COUNTY, FLORIDA.
OCTOBER, 2001

SHEET 2 OF 2

BEARING ROTATION EQUATION:
 N 01°55'30"E (PLAT BEARING)
 N 01°36'36"E (GRID BEARING)
 00°18'54" = COUNTER CLOCKWISE BEARING ROTATION (PLAT TO GRID)



ABBREVIATIONS & SYMBOLS

1. □	=	Denotes set 4" x 4" Concrete Permanent Reference Monument (P.R.M.'s). Stamped P.R.M. LS # 3357.
2. ■	=	Denotes set Mag Nail & Disk Permanent Reference Monument (P.R.M.). Stamped P.R.M. LS #3357.
3. C	=	Centerline.
4. R/W	=	Right of Way.
5. P.B.	=	Plat Book.
6. U.E.	=	Utility Easement.
7. D.E.	=	Drainage Easement.
8. E	=	"E coordinate", states the given position of a point (expressed in feet and decimals of a foot) in an East and West direction.
9. N	=	"N coordinate", states the given position of a point (expressed in feet and decimals of a foot) in a North and South direction.
10. A	=	Arc Length.
11. Δ	=	Central Angle.
12. R	=	Radius.
13. C.B.	=	Chord Bearing.
14. O.R.B.	=	Official Record Book.
15. P.O.C.	=	Point of Commencement.
16. P.O.B.	=	Point of Beginning.
17. P.B.C.	=	Palm Beach County.
18. FND	=	Found.
19. P.C.	=	Point of Curvature.
20. ○	=	Set 5/8" Steel Rod and Plastic Cap, Stamped "WALLACE, LB 4569".
21. S.R.	=	State Road.
22. L.A.E.	=	Limited Access Easement.

GULFSTREAM GOODWILL

WALLACE SURVEYING
 CORP. LICENSED BUSINESS # 4569
 901 NORTHPOINT PARKWAY, SUITE 117 WEST PALM BEACH, FLORIDA 33417-1061 (561) 640-4551

FIELD:	JOB No.: 97-1385 "K"	F.B.:	PG.:
OFFICE: R.C.	DATE: JULY, 2001	DWG. No.:	97-1385-6
C'D:	REF: 97-1385P ZAK	SHEET	2 OF 2