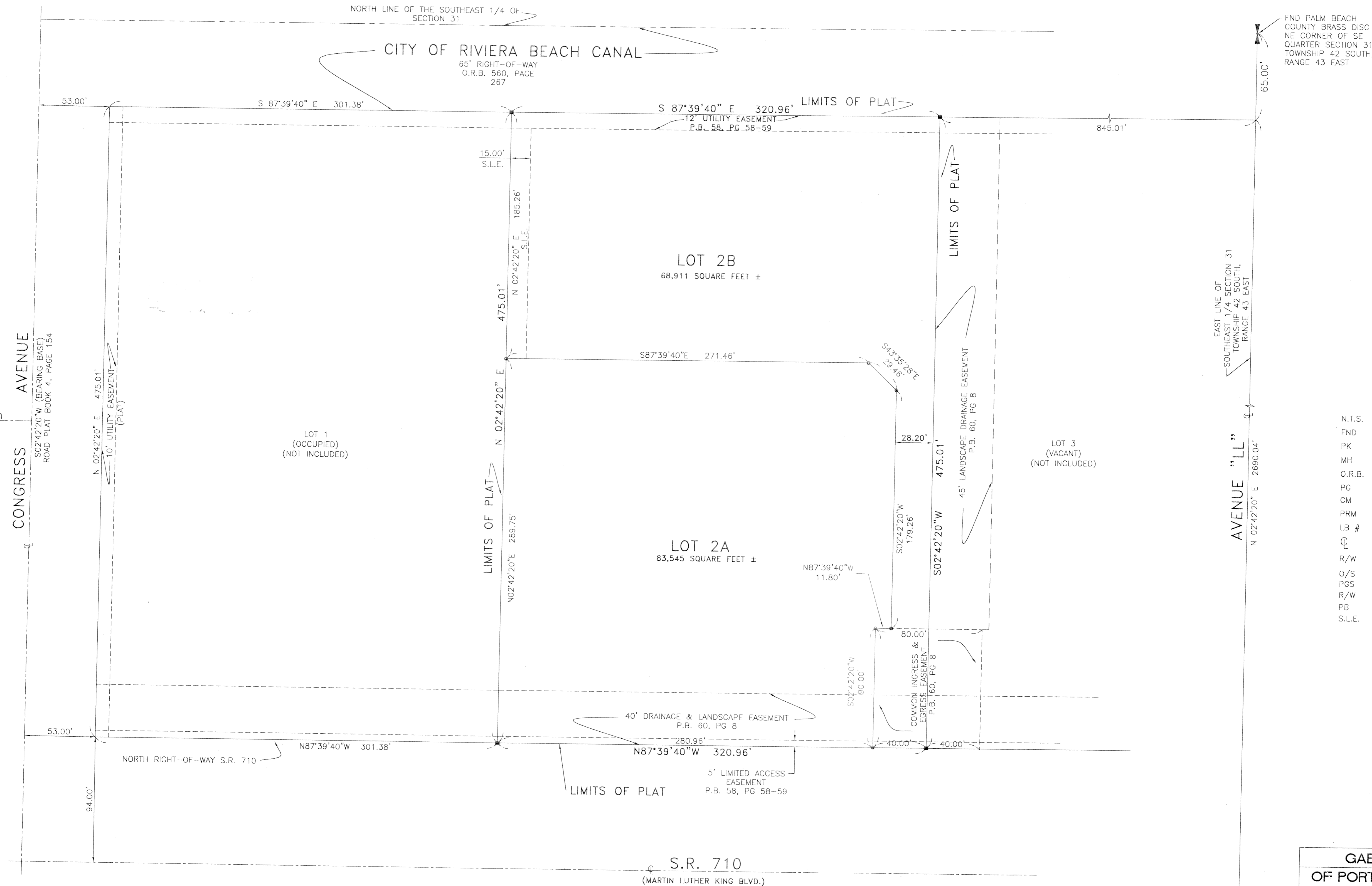
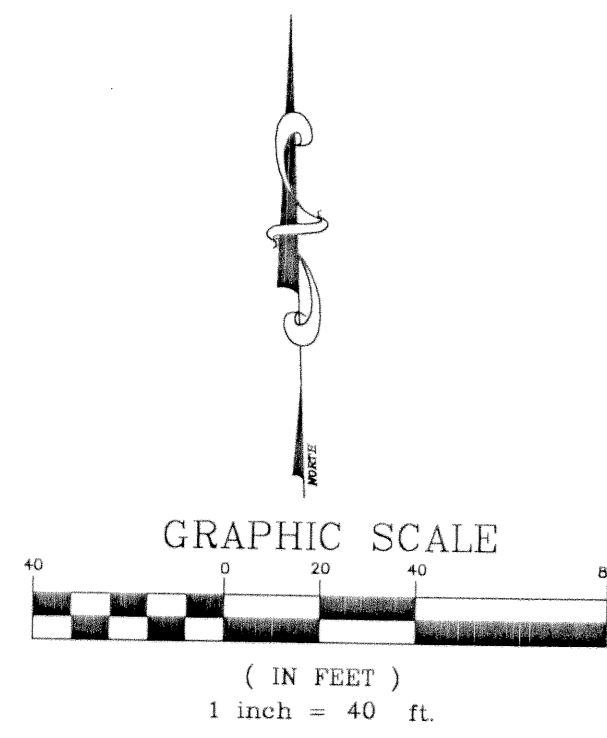


# GAETA REPLAT OF LOT 2 OF PORT COMMERCE CENTER III

BEING A REPLAT OF LOT 2, "REPLAT OF A PORTION OF THE PLAT OF PORT COMMERCE CENTER III" AS RECORDED IN PLAT BOOK 60, PAGE 8  
OF THE PUBLIC RECORDS OF PALM BEACH COUNTY, FLORIDA, SITUATE IN SECTION 31, TOWNSHIP 42 SOUTH, RANGE 43 EAST  
CITY OF RIVIERA BEACH, PALM BEACH COUNTY, FLORIDA  
SEPTEMBER, 2001



**LEGEND**

N.T.S.	NOT TO SCALE
FND	FOUND
PK	PARKER KALON
MH	MANHOLE
O.R.B.	OFFICIAL RECORD BOOK
PG	PAGE
CM	CONCRETE MONUMENT
PRM	PERMANENT REFERENCE MONUMENT
LB #	LAND SURVEY BUSINESS NUMBER
CL	CENTERLINE
R/W	RIGHT-OF-WAY
O/S	OFFSET
PGS	PAGES
R/W	RIGHT OF WAY
PB	PLAT BOOK
S.L.E.	SANITARY SEWER LINE EASEMENT

**GAETA REPLAT OF LOT 2  
OF PORT COMMERCE CENTER III**

**CARNEY-NEUHAUS, INC.**  
LB6770

11811 U.S. HIGHWAY 1, SUITE 120 PALM BEACH GARDENS, FL 33408 PHONE: (561) 851-1300 FAX: (561) 851-1428 EMAIL: CNP@CARNEY-NEUHAUS.COM		3000 BISCAYNE BOULEVARD, SUITE 200 MIAMI, FL 33133 PHONE: (305) 381-9950 FAX: (305) 378-9950		4101 N. ANDREWS AVE., SUITE 213 FORT LAUDERDALE, FL 33309 PHONE: (954) 585-0230 FAX: (954) 585-3924	
FIELD:	PROJ. # 00-037	F.B.	PG.		
OFFICE M.P.:	DATE: 08-24-01	DWG. NO.	SHEET 2 of 2		
C'KD: T.B.	REF:	SHEET:	2 of 2		

FND PALM BEACH COUNTY BRASS DISC SE CORNER OF SECTION 31, TOWNSHIP 42 SOUTH, RANGE 43 EAST