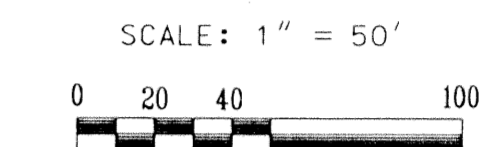
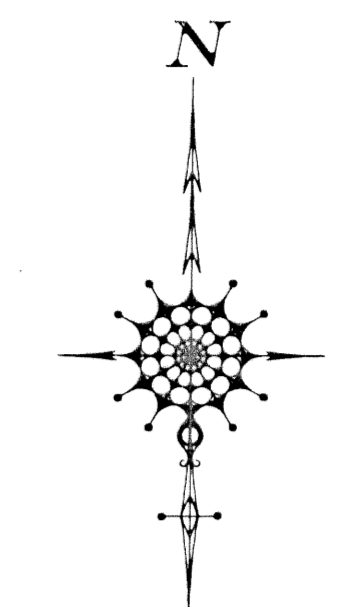


BOCAIRE GOLF CLUB No. 3 TRACT "G" REPLAT

BEING A REPLAT OF A PORTION OF TRACT "G",
BOCAIRE GOLF CLUB No. 3 (A PART OF PALM AIRE WEST P.R.D.) AS RECORDED
IN PLAT BOOK 49, PAGE 151 OF THE PUBLIC RECORDS OF PALM BEACH COUNTY, FLORIDA,
LYING IN SECTION 36, TOWNSHIP 46 SOUTH, RANGE 42 EAST, PALM BEACH COUNTY, FLORIDA

144

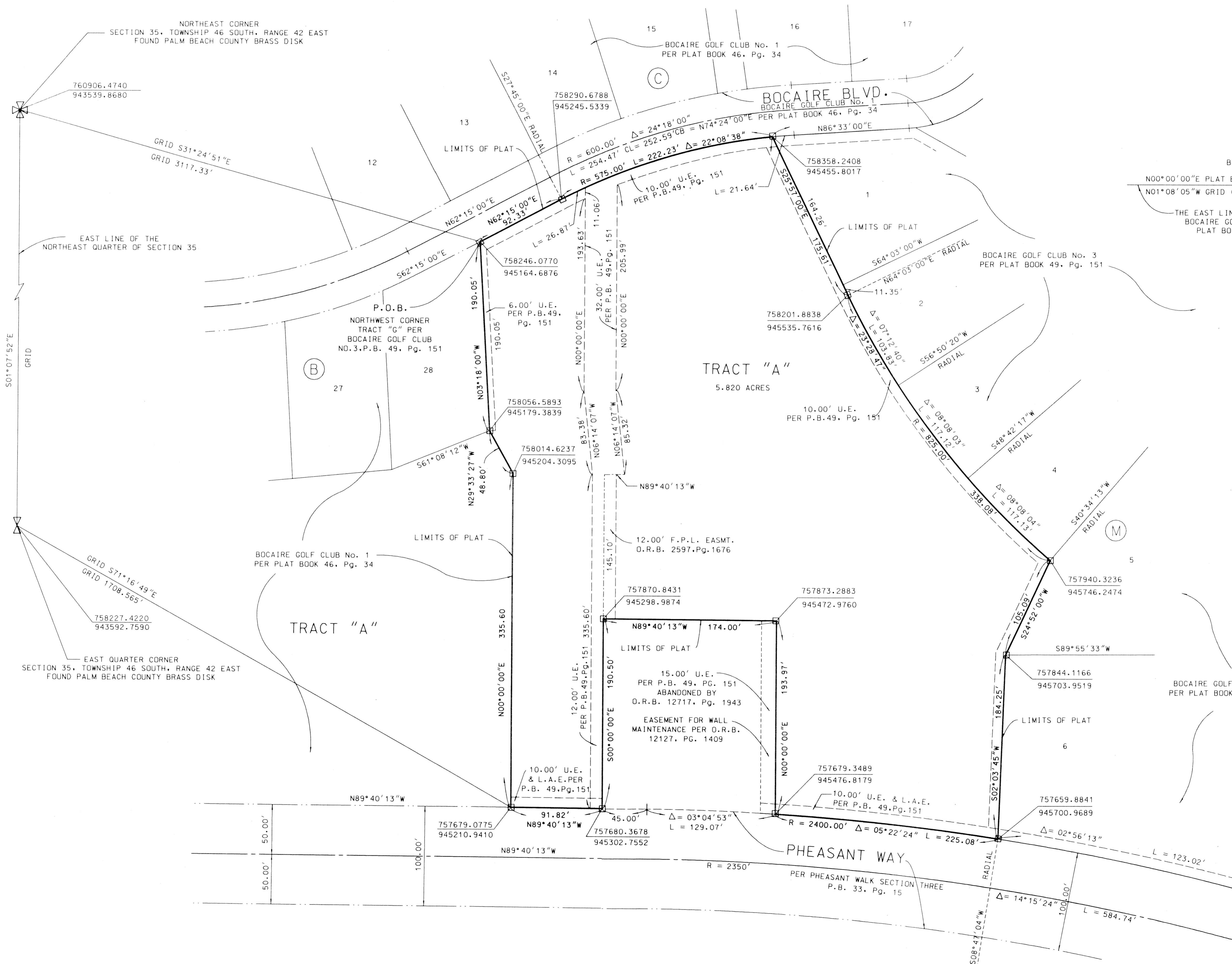


BEARING ROTATION EQUATION

$$\frac{N00^{\circ}00'00''E \text{ PLAT BEARING}}{N01^{\circ}08'05''W \text{ GRID (N.A.D. 83, 1990) BEARING}} = \frac{01^{\circ}08'05''}{\text{"COUNTER CLOCKWISE" BEARING ROTATION (PLAT TO GRID)}}$$
 THE EAST LINE OF TRACT "A" PER BOCAIRE GOLF CLUB No. 1, PLAT BOOK 46, Pg. 34

- LEGEND**
- EASMT. = EASEMENT
 - POB = POINT OF BEGINNING
 - Δ = CENTRAL ANGLE
 - R = RADIUS
 - L = ARC LENGTH
 - FD = FOUND
 - PG = PAGE
 - E = CENTERLINE
 - PB = PLAT BOOK
 - DB = DEED BOOK
 - C = CALCULATED
 - R/W = RIGHT OF WAY
 - UE = UTILITY EASEMENT
 - LAE = LIMITED ACCESS EASEMENT
 - ORB = OFFICIAL RECORD BOOK
 - IR & CAP = IRON ROD & CAP
 - = SET 1/2" IRON ROD & CAP "PALM BEACH COUNTY"
 - = SET PERMANENT REFERENCE MONUMENT (PRM) 4" ROUND CONCRETE MONUMENT LS # 3173
 - = FOUND PRM AS NOTED
 - N XXXXX.XXX = NORTHERING STATE PLANE COORDINATE
 - E XXXXX.XXX = EASTING STATE PLANE COORDINATE
 - CB = CHORD BEARING
 - CL = CHORD LENGTH

STATE PLANE COORDINATES
 COORDINATES SHOWN ARE GRID
 DATUM - NAD 83, 1990 ADJUSTMENT
 ZONE - FLORIDA EAST
 LINEAR UNIT - US SURVEY FOOT
 COORDINATE SYSTEM 1983 STATE PLANE
 TRANSVERSE MERCATOR PROJECTION
 ALL DISTANCES ARE GROUND
 GROUND DISTANCE X SCALE FACTOR = GRID DISTANCE
 SCALE FACTOR = 1.0000359



PALM BEACH COUNTY
 ENGINEERING AND PUBLIC WORKS
ENGINEERING SERVICES
 160 AUSTRALIAN AVENUE
 WEST PALM BEACH, FL 33406

BOCAIRE GOLF CLUB NO. 3
 TRACT "G" REPLAT

SHEET NO. 2
 OF 2
 PROJECT NO. 2000014-002

SCALE: 1" = 50'
 APPROVED: W.C.E.
 DRAWN: A.B.F.
 CHECKED: C.W.M.
 DATE: 12/17/2000
 DRAWING NO. S-3-00-1433

SUBMITTAL: Bocaire Golf Club No. 3 Tr. G. Replat
 DRAWN: 01/14/01
 CHECKED: 01/14/01
 DATE: 01/14/01
 PROJECT NO. 2000014-002