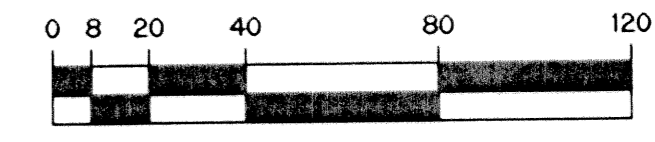


CARLETON OAKS

CARLETON OAKS PLANNED UNIT DEVELOPMENT
BEING A PARCEL OF LAND LYING IN THE WEST ONE-QUARTER OF SECTION 13,
TOWNSHIP 42 SOUTH, RANGE 41 EAST, PALM BEACH COUNTY, FLORIDA.

SHEET 2 OF 10 JUNE, 2001

THIS INSTRUMENT PREPARED BY
WILBUR F. DIVINE, P.S.M. 4190, STATE OF FLORIDA
LAWSON, NOBLE AND WEBB, INC., LB-6674
ENGINEERS PLANNERS SURVEYORS
420 COLUMBIA DRIVE, SUITE 110
WEST PALM BEACH, FLORIDA



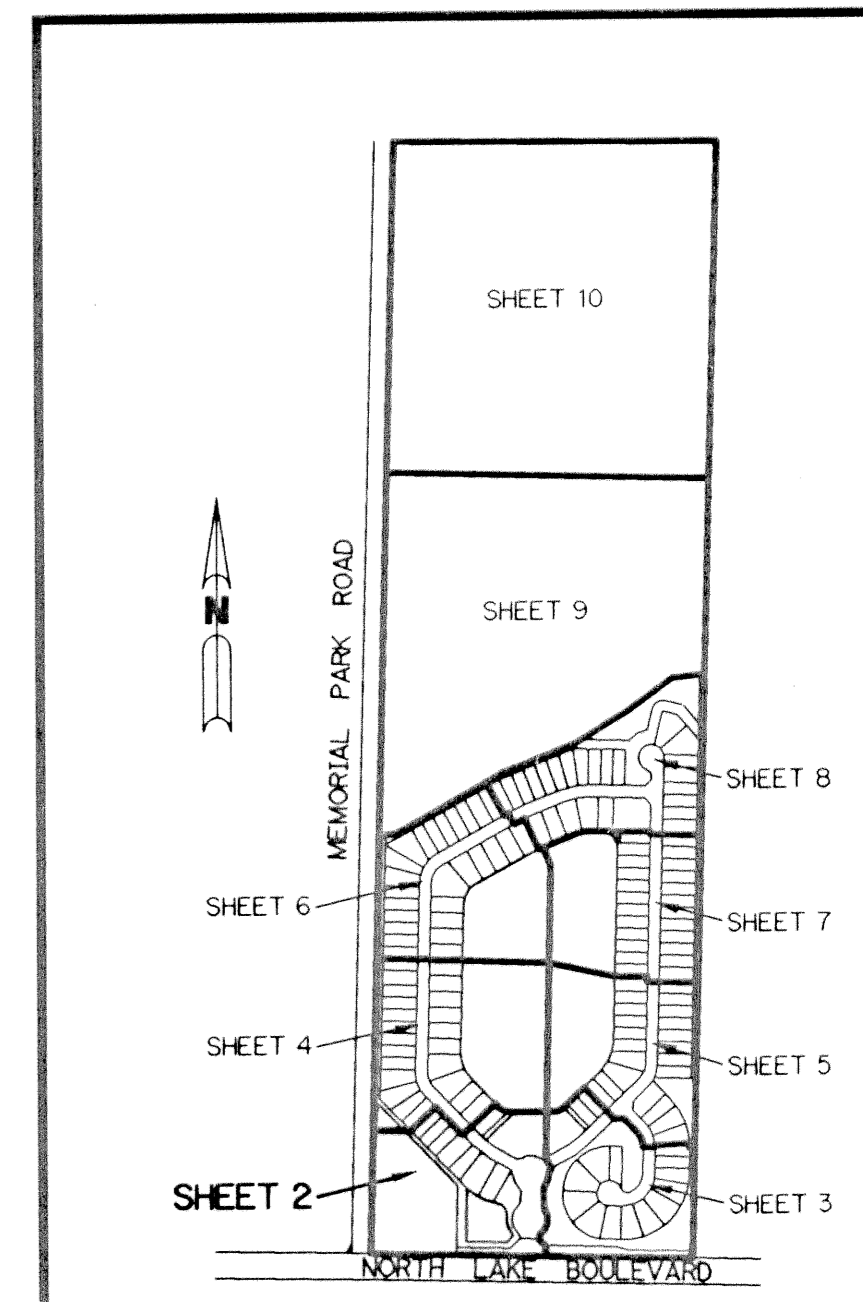
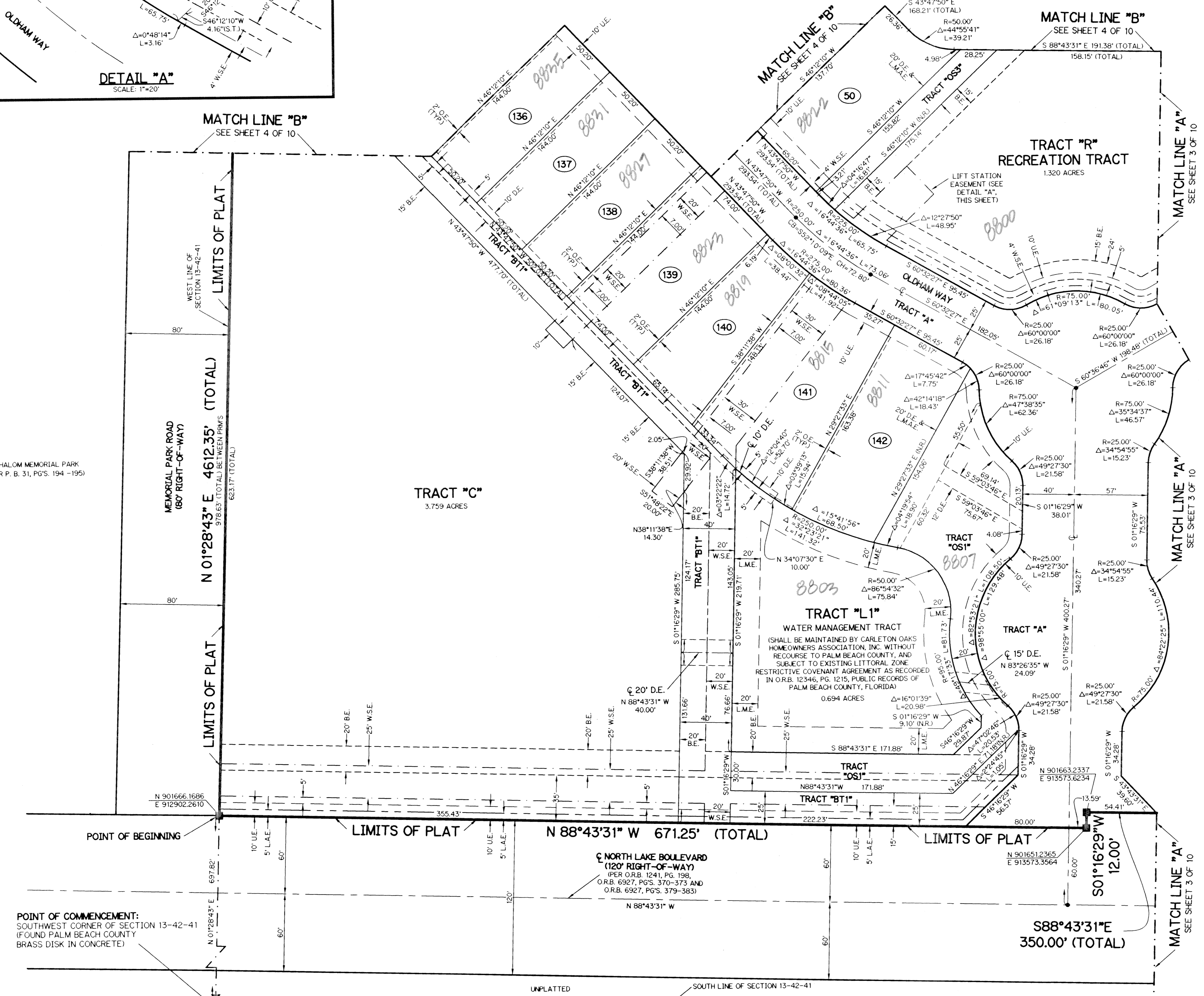
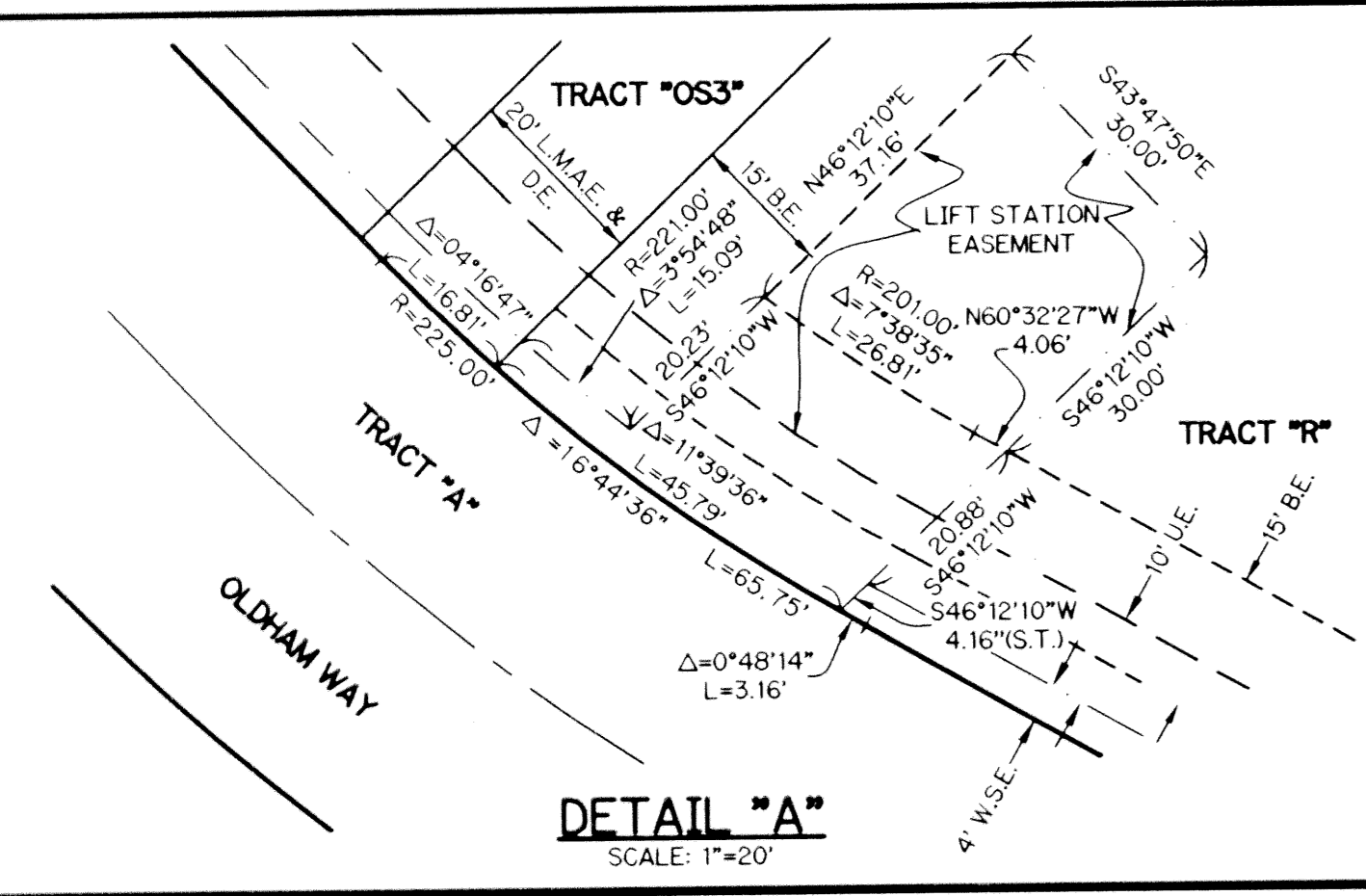
SCALE: 1" = 40'

NOTE:

COORDINATES SHOWN ARE GRID COORDINATES
DATUM = NAD 83 (1990 ADJUSTMENT)
ZONE = FLORIDA EAST ZONE
LINEAR UNIT = U.S. SURVEY FEET
COORDINATE SYSTEM 1983 STATE PLANE
TRANSVERSE MERCATOR PROJECTION
ALL DISTANCES ARE GROUND
SCALE FACTOR = 1.0000171
NO ROTATION

LEGEND:

- - SET PERMANENT REFERENCE MONUMENT, LB-6674
 - △ - DELTA ANGLE
 - B.E. - BUFFER EASEMENT
 - C. - CENTERLINE
 - C.B. - CHORD BEARING
 - CH. - CHORD LENGTH
 - D.B. - DEED BOOK
 - D.E. - DRAINAGE EASEMENT
 - L. - ARC LENGTH
 - L.A.E. - LIMITED ACCESS EASEMENT
 - L.M.A.E. - LAKE MAINTENANCE ACCESS EASEMENT
 - L.M.E. - LAKE MAINTENANCE EASEMENT
 - L.W.D. - LAKE WORTH DRAINAGE DISTRICT
 - N.R. - NOT RADIAL
 - N.T.S. - NOT TO SCALE
 - O.R.B. - OFFICIAL RECORD BOOK
 - P.B. - PLAT BOOK
 - PGS. - PAGES
 - PRM - PERMANENT REFERENCE MONUMENT
 - P.S.M. - PROFESSIONAL SURVEYOR AND MAPPER
 - R. - RADIUS
 - R/W - RIGHT-OF-WAY
 - S.T. - SURVEY TIE
 - U.E. - UTILITY EASEMENT
 - W.S.E. - WATER AND SEWER EASEMENT
- N 814602.8657 - DENOTES STATE PLANE COORDINATES
E 785753.1680



SUBDIVISION CARLETON OAKS
BOOK 972 PAGE 146
FLOOD MAP # 00505
ZONING PLD
QUAD # 5B
SE
TAZ # 805
PUD NAME CARLETON OAKS

POINT OF COMMENCEMENT:
SOUTHWEST CORNER OF SECTION 13-42-41
(FOUND PALM BEACH COUNTY
BRASS DISK IN CONCRETE)

LIMITS OF PLAT
WEST LINE OF SECTION 13-42-41
N 01°28'43" E 4612.35' (TOTAL)
97863' (TOTAL BETWEEN PRMS)
623.17' (TOTAL)

LIMITS OF PLAT
N 01°28'43" E 4612.35' (TOTAL)
97863' (TOTAL BETWEEN PRMS)
623.17' (TOTAL)

POINT OF BEGINNING

LIMITS OF PLAT

LIMITS OF PLAT
N 88°43'31" W 671.25' (TOTAL)

LIMITS OF PLAT

LIMITS OF PLAT
S 88°43'31" E 350.00' (TOTAL)

Q NORTH LAKE BOULEVARD
(120' RIGHT-OF-WAY)
(PER O.R.B. 1241, PG. 198,
O.R.B. 6927, PGS. 370-373 AND
O.R.B. 6927, PGS. 379-383)

UNPLATTED

SOUTH LINE OF SECTION 13-42-41

SHALOM MEMORIAL PARK
(PER P. B. 31, PGS. 194-195)

MEMORIAL PARK ROAD
(60' RIGHT-OF-WAY)

TRACT "C"
3.759 ACRES

TRACT "L1"
WATER MANAGEMENT TRACT
(SHALL BE MAINTAINED BY CARLETON OAKS
HOMEOWNERS ASSOCIATION, INC. WITHOUT
RECOURSE TO PALM BEACH COUNTY, AND
SUBJECT TO EXISTING LITTORAL ZONE
RESTRICTIVE COVENANT AGREEMENT AS RECORDED
IN O.R.B. 12346, PG. 1215, PUBLIC RECORDS OF
PALM BEACH COUNTY, FLORIDA)

TRACT "R"
RECREATION TRACT
1.320 ACRES

TRACT "A"

TRACT "OS1"

TRACT "OS2"

TRACT "OS3"

TRACT "OS4"

TRACT "OS5"

TRACT "OS6"

TRACT "OS7"

TRACT "OS8"

TRACT "OS9"

TRACT "OS10"

TRACT "OS11"

TRACT "OS12"

TRACT "OS13"

TRACT "OS14"

TRACT "OS15"

TRACT "OS16"

TRACT "OS17"

TRACT "OS18"

TRACT "OS19"

TRACT "OS20"

TRACT "OS21"

TRACT "OS22"

TRACT "OS23"

TRACT "OS24"

TRACT "OS25"

TRACT "OS26"

TRACT "OS27"

TRACT "OS28"

TRACT "OS29"

TRACT "OS30"

TRACT "OS31"

TRACT "OS32"

TRACT "OS33"

TRACT "OS34"

TRACT "OS35"

TRACT "OS36"

TRACT "OS37"

TRACT "OS38"

TRACT "OS39"

TRACT "OS40"

TRACT "OS41"

TRACT "OS42"

TRACT "OS43"

TRACT "OS44"

TRACT "OS45"

TRACT "OS46"

TRACT "OS47"

TRACT "OS48"

TRACT "OS49"

TRACT "OS50"

TRACT "OS51"

TRACT "OS52"

TRACT "OS53"

TRACT "OS54"

TRACT "OS55"

TRACT "OS56"

TRACT "OS57"

TRACT "OS58"

TRACT "OS59"

TRACT "OS60"

TRACT "OS61"

TRACT "OS62"

TRACT "OS63"

TRACT "OS64"

TRACT "OS65"

TRACT "OS66"

TRACT "OS67"

TRACT "OS68"

TRACT "OS69"

TRACT "OS70"

TRACT "OS71"

TRACT "OS72"

TRACT "OS73"

TRACT "OS74"

TRACT "OS75"

TRACT "OS76"

TRACT "OS77"

TRACT "OS78"

TRACT "OS79"

TRACT "OS80"

TRACT "OS81"

TRACT "OS82"

TRACT "OS83"

TRACT "OS84"

TRACT "OS85"

TRACT "OS86"

TRACT "OS87"

TRACT "OS88"

TRACT "OS89"

TRACT "OS90"

TRACT "OS91"

TRACT "OS92"

TRACT "OS93"

TRACT "OS94"

TRACT "OS95"

TRACT "OS96"

TRACT "OS97"

TRACT "OS98"

TRACT "OS99"

TRACT "OS100"