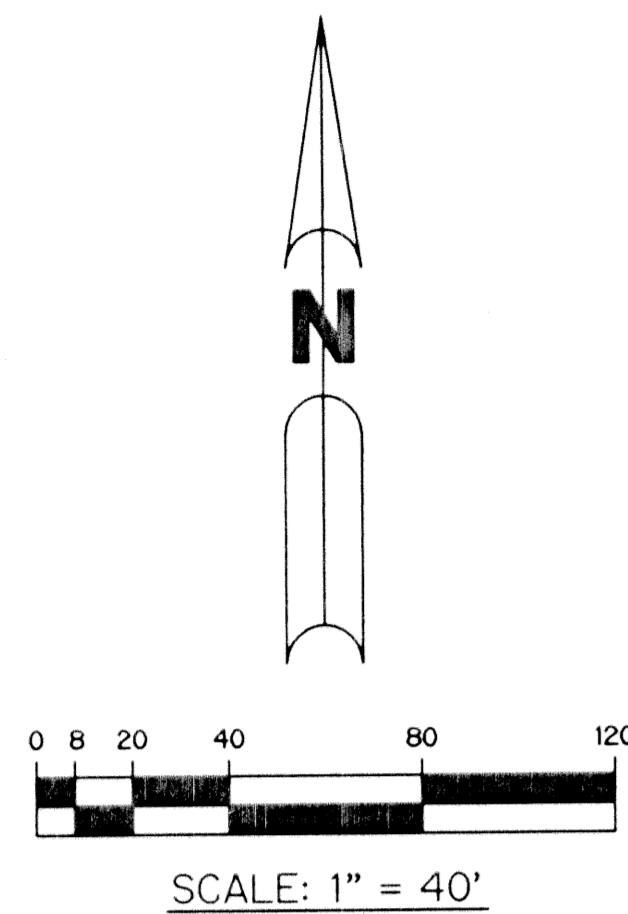


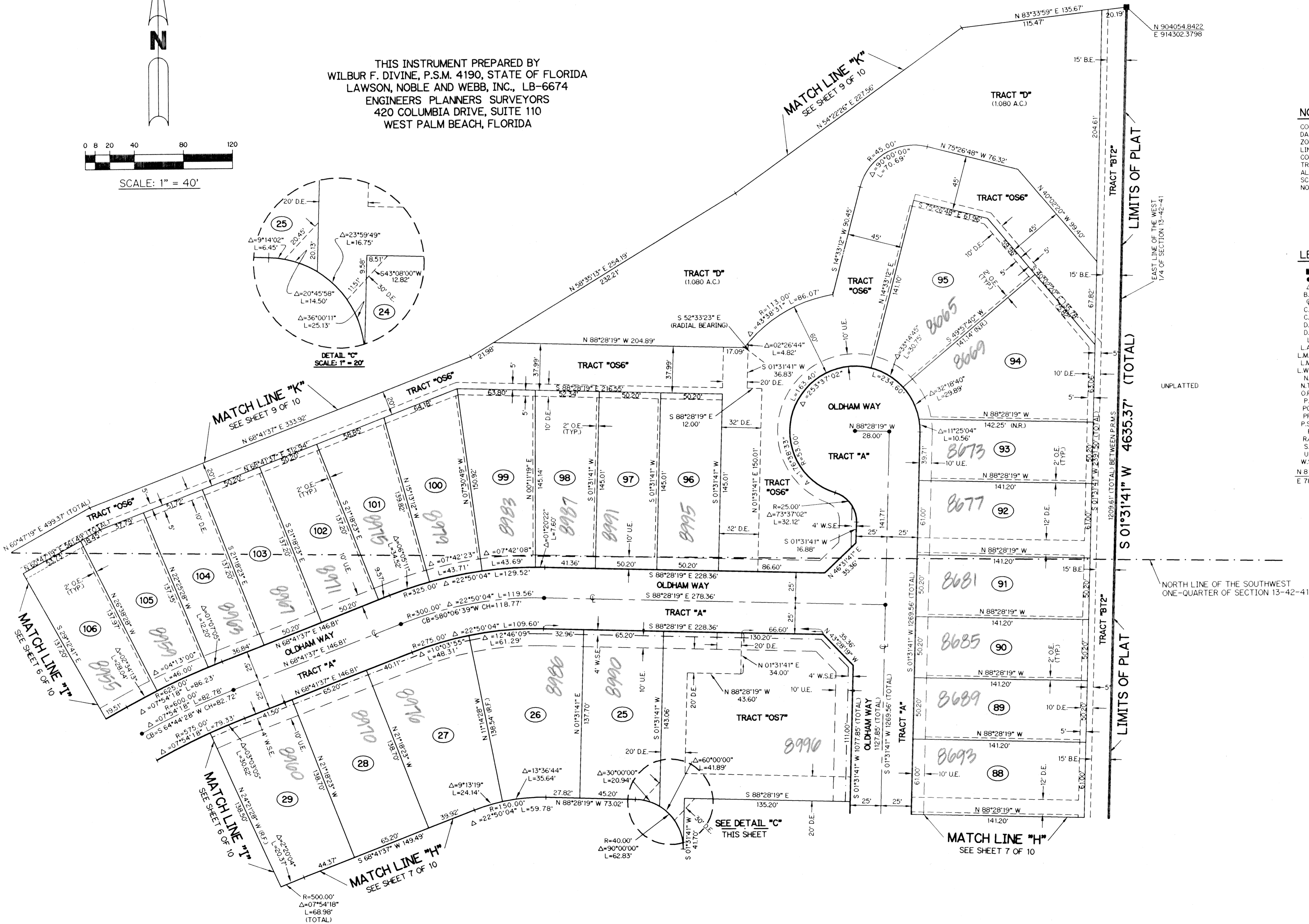
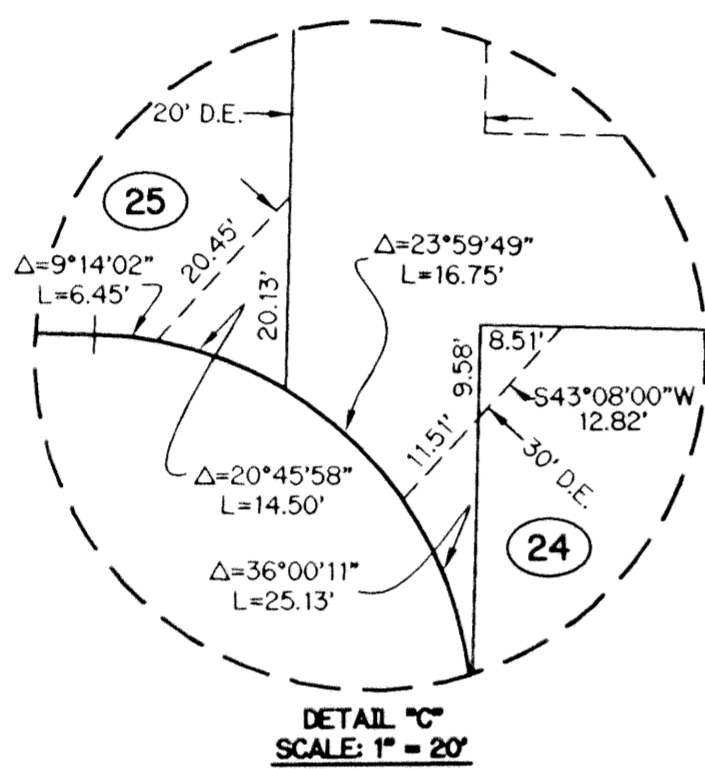
CARLETON OAKS

CARLETON OAKS PLANNED UNIT DEVELOPMENT
BEING A PARCEL OF LAND LYING IN THE WEST ONE-QUARTER OF SECTION 13,
TOWNSHIP 42 SOUTH, RANGE 41 EAST, PALM BEACH COUNTY, FLORIDA.

SHEET 8 OF 10 JUNE, 2001



THIS INSTRUMENT PREPARED BY
WILBUR F. DIVINE, P.S.M. 4190, STATE OF FLORIDA
LAWSON, NOBLE AND WEBB, INC., LB-6674
ENGINEERS PLANNERS SURVEYORS
420 COLUMBIA DRIVE, SUITE 110
WEST PALM BEACH, FLORIDA

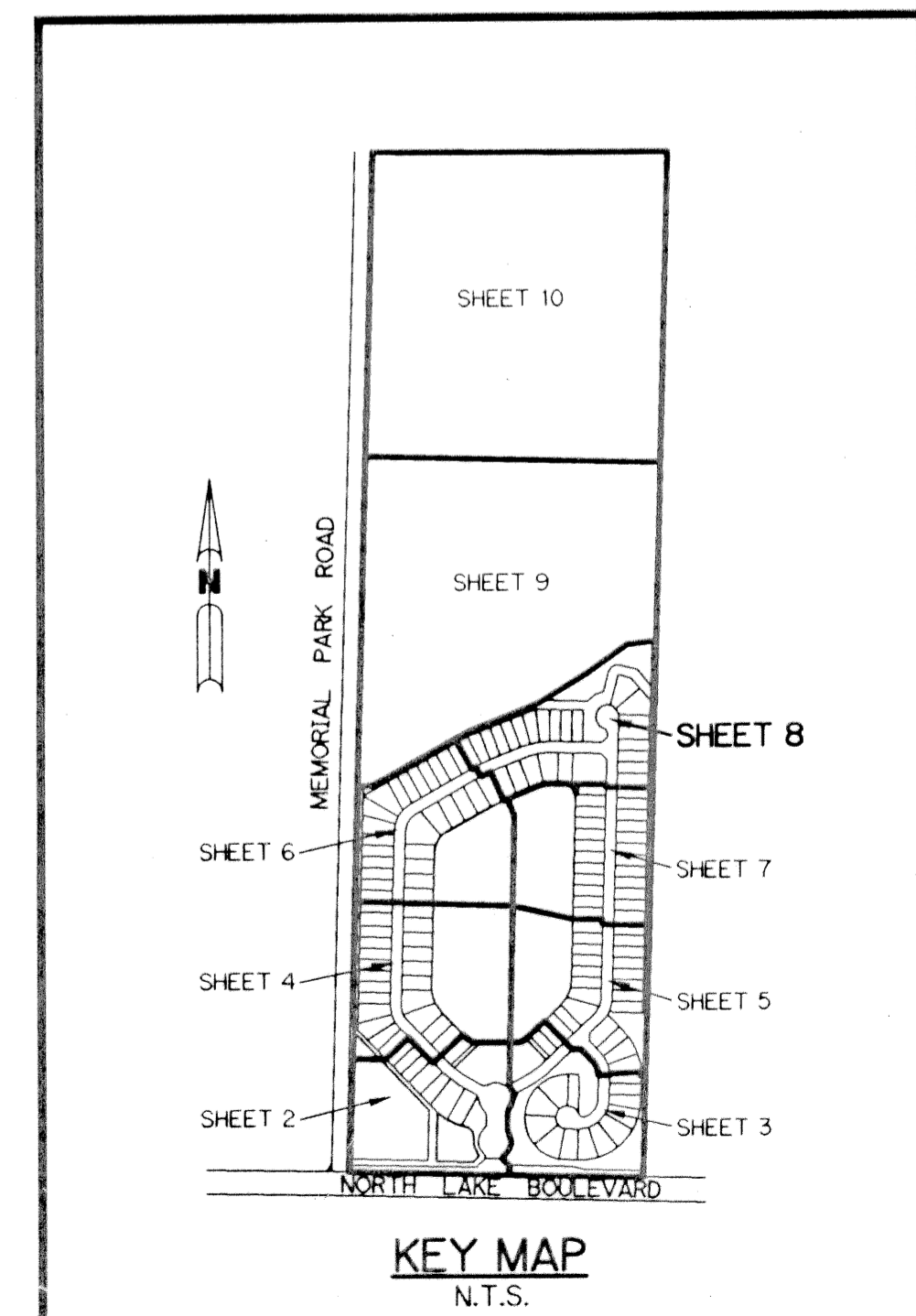


NOTE:

COORDINATES SHOWN ARE GRID COORDINATES
DATUM = NAD 83 (1990 ADJUSTMENT)
ZONE = FLORIDA EAST ZONE
LINEAR UNIT = U.S. SURVEY FEET
COORDINATE SYSTEM 1983 STATE PLANE
TRANSVERSE MERCATOR PROJECTION
ALL DISTANCES ARE GROUND
SCALE FACTOR = 1.0000171
NO ROTATION

LEGEND:

- - SET PERMANENT REFERENCE MONUMENT, LB-6674
- - PERMANENT CONTROL POINT, LB-6674
- Δ - DELTA ANGLE
- B.E. - BUFFER EASEMENT
- C. - CENTERLINE
- C.B. - CHORD BEARING
- C.H. - CHORD LENGTH
- D.B. - DEED BOOK
- D.E. - DRAINAGE EASEMENT
- L - ARC LENGTH
- L.A.E. - LIMITED ACCESS EASEMENT
- L.M.A.E. - LAKE MAINTENANCE ACCESS EASEMENT
- L.M.E. - LAKE MAINTENANCE EASEMENT
- L.W.D. - LAKE WORTH DRAINAGE DISTRICT
- N.R. - NOT RADIAL
- N.T.S. - NOT TO SCALE
- O.R.B. - OFFICIAL RECORD BOOK
- P.B. - PLAT BOOK
- P.G.S. - PAGES
- PRM - PERMANENT REFERENCE MONUMENT
- P.S.M. - PROFESSIONAL SURVEYOR AND MAPPER
- R - RADIUS
- R/W - RIGHT-OF-WAY
- S.T. - SURVEY TIE
- U.E. - UTILITY EASEMENT
- W.S.E. - WATER AND SEWER EASEMENT
- N 814602.8657 E 785753.1680 - DENOTES STATE PLANE COORDINATES



SUBDIVISION CARLETON OAKS
BOOK 92
PAGE 152
FLOOD ZONE B
FLOOD MAP # 00508
QUAD # 5B
ZONING PUD
ZIP CODE 33412
TAX # 805
PMD NAME CARLETON OAKS