

CARLETON OAKS

CARLETON OAKS PLANNED UNIT DEVELOPMENT

BEING A PARCEL OF LAND LYING IN THE WEST ONE-QUARTER OF SECTION 13,
TOWNSHIP 42 SOUTH, RANGE 41 EAST, PALM BEACH COUNTY, FLORIDA.

SHEET 10 OF 10 JUNE, 2001

UNPLATTED

FOUND PALM BEACH COUNTY
BRASS DISK IN CONCRETE
"JENNINGS"
N 911742.3690
E 913504.8980

NORTHWEST CORNER OF SECTION 13-42-41
(FOUND PALM BEACH COUNTY BRASS
DISK IN CONCRETE)
N 906277.1510
E 913021.2760

S88°32'20"W
91.41'(GRID)
91.41'(GROUND)

N 906279.4820
E 913112.6560

NORTH LINE OF SECTION 13-42-41

LIMITS OF PLAT

N 89°42'31" W 1340.19'

LIMITS OF PLAT

N 906270.2485
E 914361.4749

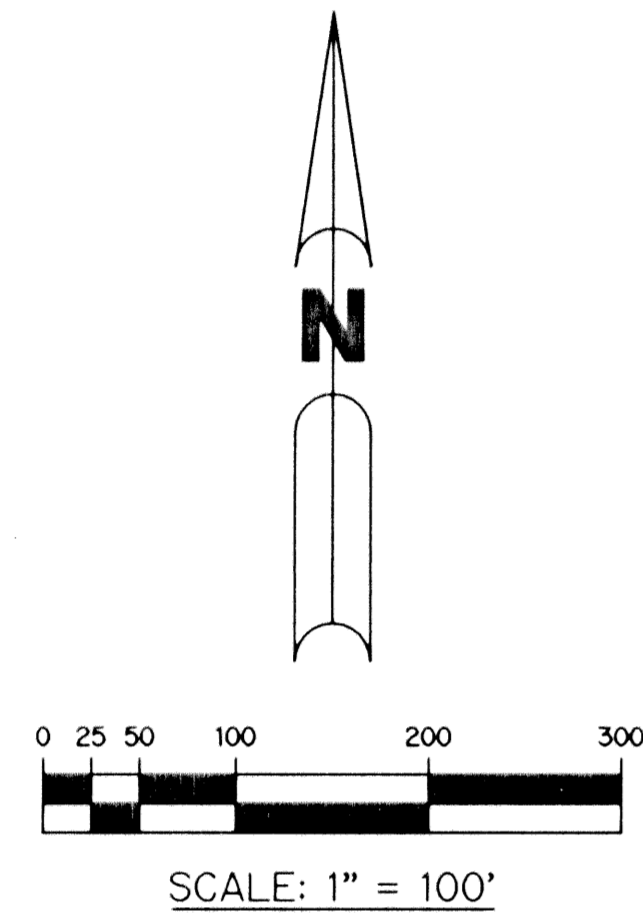
FOUND PALM BEACH COUNTY
BRASS DISK IN CONCRETE
"CHUMLEY"

NOTE:

COORDINATES SHOWN ARE GRID COORDINATES
DATUM = NAD 83 (1990 ADJUSTMENT)
ZONE = FLORIDA EAST ZONE
LINEAR UNIT = U.S. SURVEY FEET
COORDINATE SYSTEM 1983 STATE PLANE
TRANSVERSE MERCATOR PROJECTION
ALL DISTANCES ARE GROUND
SCALE FACTOR = 1.0000171
NO ROTATION

LEGEND:

- - SET PERMANENT REFERENCE MONUMENT, LB-6674
 - - PERMANENT CONTROL POINT, LB-6674
 - △ - DELTA ANGLE
 - B.E. - BUFFER EASEMENT
 - C. - CENTERLINE
 - C.B. - CHORD BEARING
 - C.H. - CHORD LENGTH
 - D.B. - DEED BOOK
 - D.E. - DRAINAGE EASEMENT
 - L. - ARC LENGTH
 - L.A.E. - LIMITED ACCESS EASEMENT
 - L.M.A.E. - LAKE MAINTENANCE ACCESS EASEMENT
 - L.M.E. - LAKE MAINTENANCE EASEMENT
 - L.W.D.D. - LAKE WORTH DRAINAGE DISTRICT
 - N.R. - NOT RADIAL
 - N.T.S. - NOT TO SCALE
 - O.R.B. - OFFICIAL RECORD BOOK
 - P.B. - PLAT BOOK
 - P.G.S. - PAGES
 - PRM - PERMANENT REFERENCE MONUMENT
 - P.S.M. - PROFESSIONAL SURVEYOR AND MAPPER
 - R. - RADIUS
 - R/W. - RIGHT-OF-WAY
 - S.T. - SURVEY TIE
 - U.E. - UTILITY EASEMENT
 - W.S.E. - WATER AND SEWER EASEMENT
- N 814602.8657 - DENOTES STATE PLANE COORDINATES
E 785753.1680



SHALOM MEMORIAL PARK
(PER P. B. 31, PGS. 194 -195)

TRACT "B"

SUBJECT TO CONSERVATION EASEMENT
RECORDED IN O.R.B. 11056, PG. 808)
(78.271 AC.)

UNPLATTED

LIMITS OF PLAT

MEMORIAL PARK ROAD
(80' RIGHT-OF-WAY)
N 01°28'43" E 4612.35' (TOTAL)

LIMITS OF PLAT

LIMITS OF PLAT

80'

1327.55' BETWEEN PRMS

WEST LINE OF SECTION 13-42-41

1327.54' TOTAL BETWEEN PRMS

MATCH LINE "L"
SEE SHEET 9 OF 10

MATCH LINE "L"
SEE SHEET 9 OF 10

EAST LINE OF THE WEST ONE-QUARTER OF SECTION 13-42-41

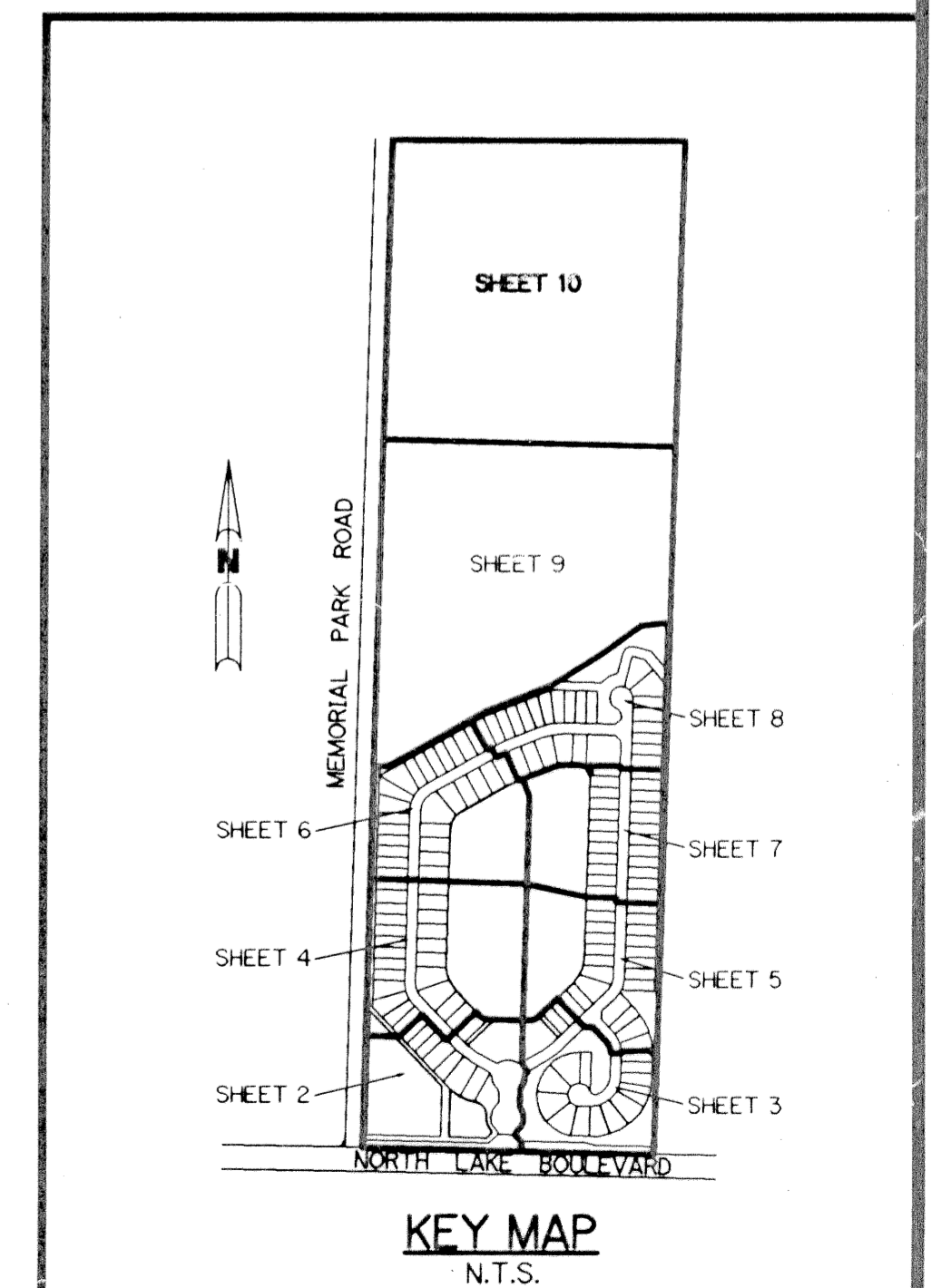
1108.08'

S 01°31'41" W 4635.37' (TOTAL)

LIMITS OF PLAT

N 905162.5427
E 914331.9276

THIS INSTRUMENT PREPARED BY
WILBUR F. DIVINE, P.S.M. 4190, STATE OF FLORIDA
LAWSON, NOBLE AND WEBB, INC., LB-6674
ENGINEERS PLANNERS SURVEYORS
420 COLUMBIA DRIVE, SUITE 110
WEST PALM BEACH, FLORIDA



KEY MAP
N.T.S.

SUBDIVISION CARLETON OAKS
BOOK 92
FLOOD ZONE B
QUAD # 58
TAX # 825
PUD NAME CARLETON OAKS

PAGE 154
FLOOD MAP # 0050 B
ZONING PUD
ZIP CODE 33412