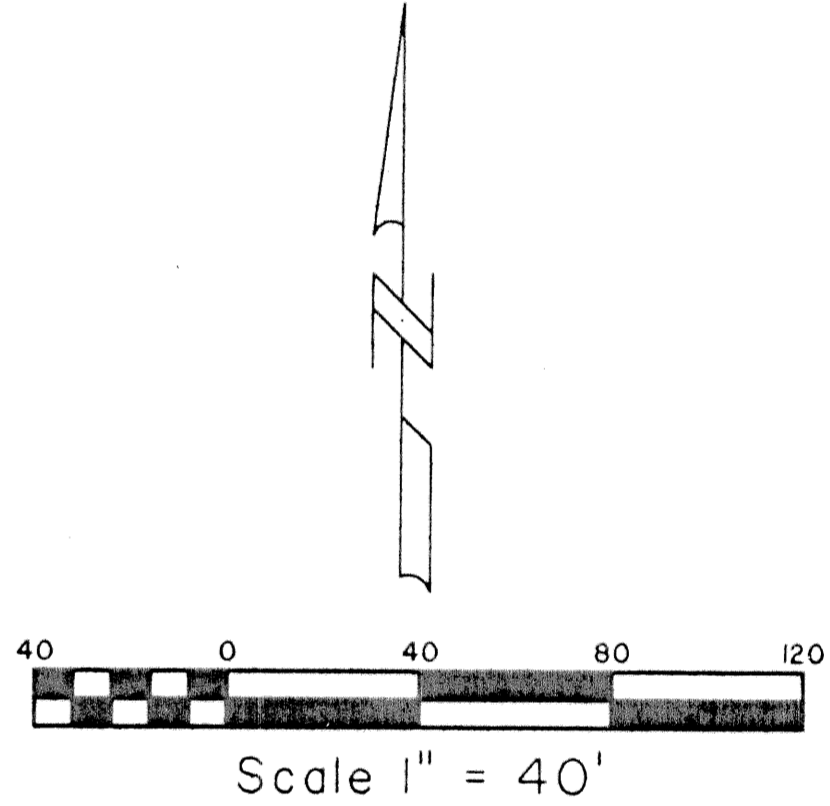
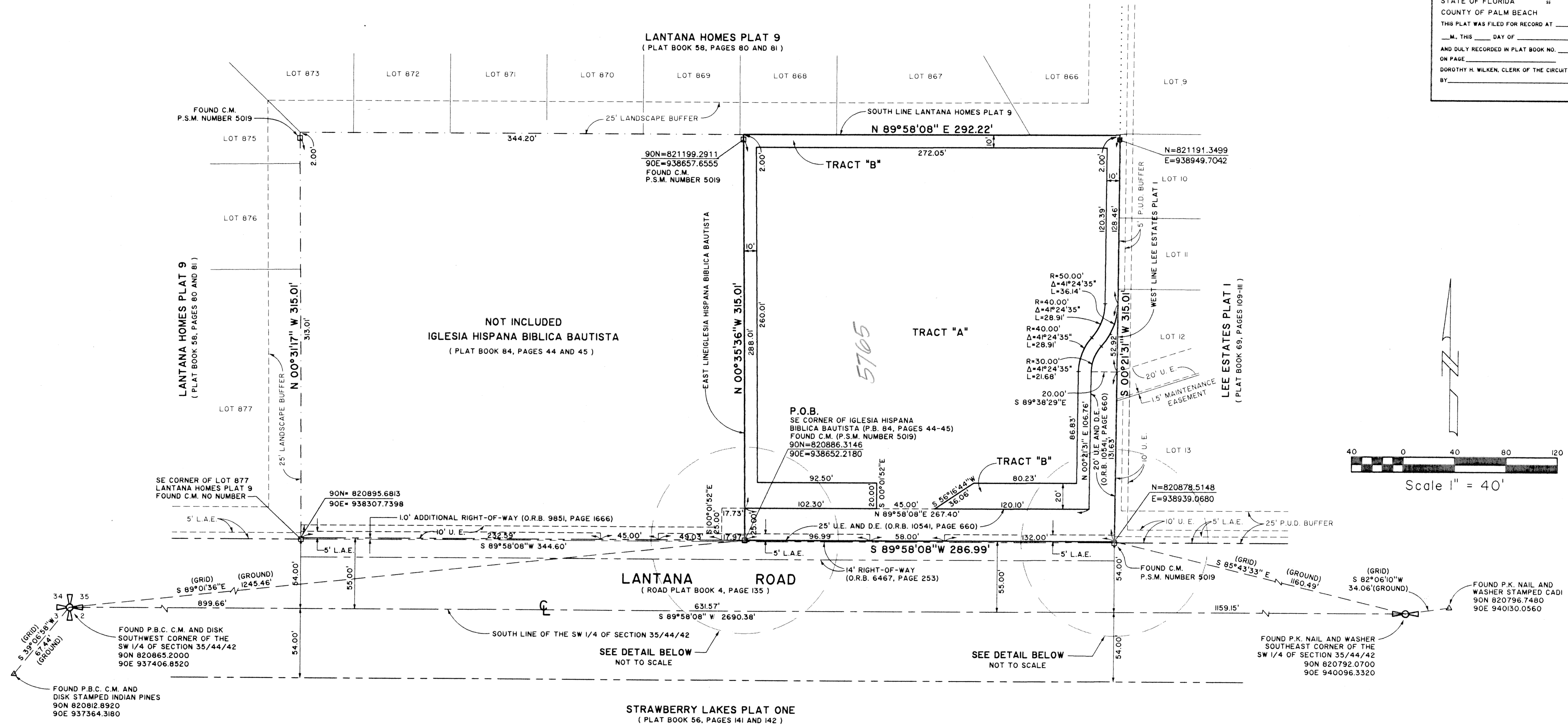


# PLANET KIDS NO. VI

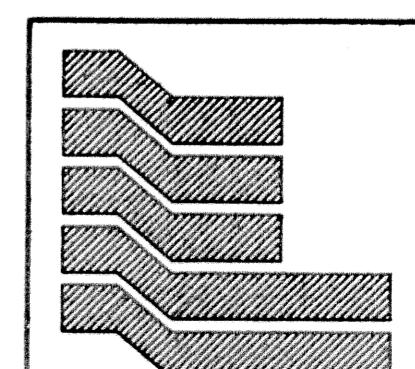
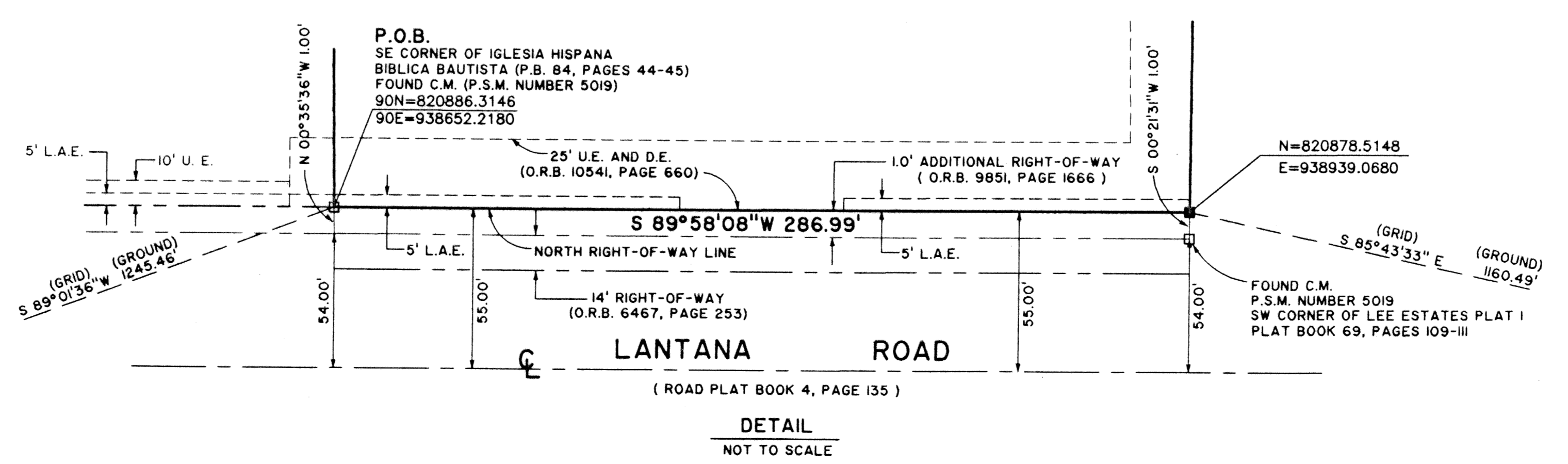
LYING IN SECTION 35, TOWNSHIP 44 SOUTH, RANGE 42 EAST,  
PALM BEACH COUNTY, FLORIDA.  
SHEET 2 OF 2

STATE OF FLORIDA  
COUNTY OF PALM BEACH  
THIS PLAT WAS FILED FOR RECORD AT \_\_\_\_\_  
ON \_\_\_\_\_ M. THIS \_\_\_\_\_ DAY OF \_\_\_\_\_ 2001  
AND DULY RECORDED IN PLAT BOOK NO. \_\_\_\_\_  
ON PAGE \_\_\_\_\_  
DOROTHY H. WILKEN, CLERK OF THE CIRCUIT COURT  
BY \_\_\_\_\_ D.C.



SUBMISSION PLANET KIDS No. VI  
BOOK 92  
PAGE 156  
FLOOD ZONE B  
QUAD # 25  
SE  
TAZ 950  
PUD NAME

**COORDINATE NOTE:**  
STATE PLANE COORDINATES SHOWN ARE GRID DATUM, NAD 83 1990  
ADJUSTMENT, FLORIDA EAST ZONE, COORDINATE SYSTEM 1983 STATE  
PLANE, TRANSVERSE MERCATOR PROJECTION  
LINEAR UNIT = US SURVEY FEET  
ALL DISTANCES ARE GROUND  
SCALE FACTOR = 1.0000326  
GROUND DISTANCE X SCALE FACTOR = GRID DISTANCE  
S 89°58'08"W (PLAT BEARING) 0°35'19" CLOCKWISE ROTATION  
S 88°26'33"E (GRID BEARING) PLAT TO GRID  
THE SOUTH LINE OF THE SW 1/4 OF SECTION 35, TOWNSHIP 44 SOUTH, RANGE 42 EAST.



**Landmark Surveying & Mapping Inc.**  
1850 Forest Hill Boulevard  
Ph. (561) 433-5405 Suite 100 W.P.B. Florida  
LB # 4396