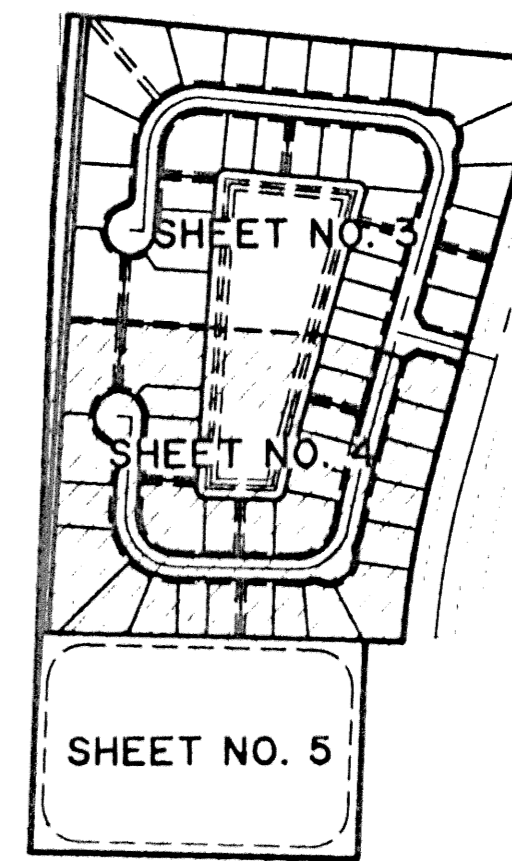


ISLES AT WELLINGTON PLAT V

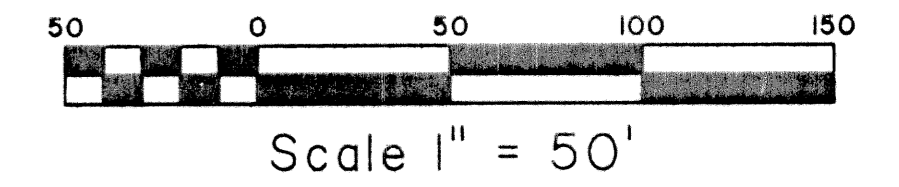
A PORTION OF THE ORANGE POINT PLANNED UNIT DEVELOPMENT
 LYING IN SECTION 26, TOWNSHIP 44 SOUTH, RANGE 41 EAST,
 VILLAGE OF WELLINGTON, PALM BEACH COUNTY, FLORIDA.
 SHEET 4 OF 5 NOVEMBER, 2001

166

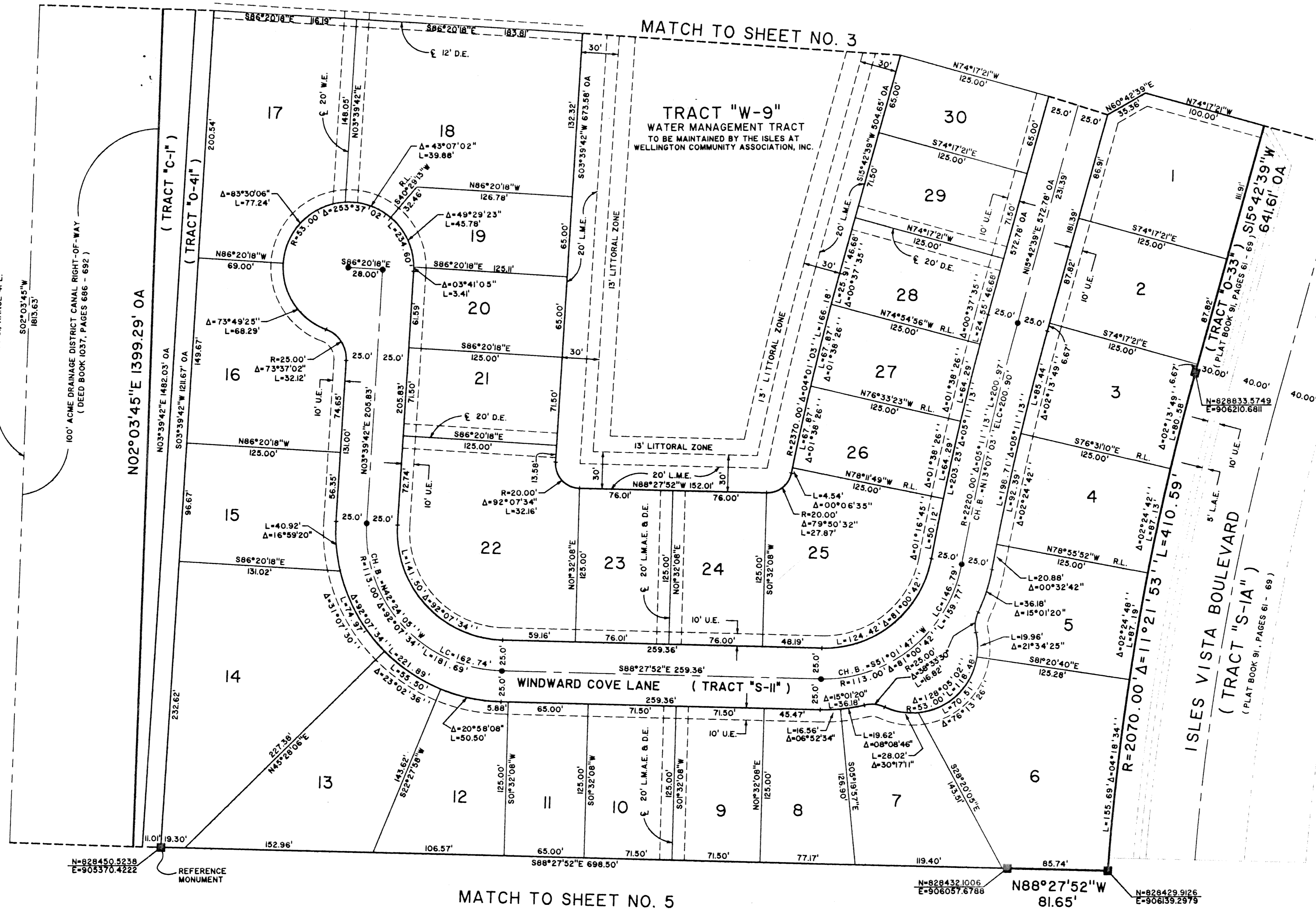
STATE OF FLORIDA SS
 COUNTY OF PALM BEACH
 THIS PLAT WAS FILED FOR RECORD AT _____
 M., THIS _____ DAY OF _____ 2001
 AND DULY RECORDED IN PLAT BOOK NO. _____
 ON PAGE _____
 DOROTHY H. WILKEN,
 CLERK OF THE CIRCUIT COURT
 BY _____ D.C.



KEY MAP
NOT TO SCALE



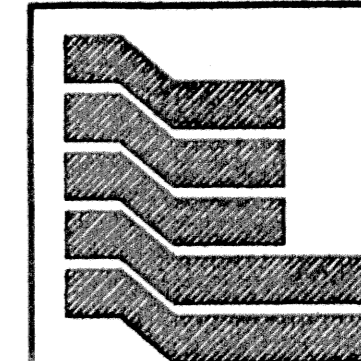
NOT PLATTED



ISLES AT WELLINGTON PLAT IV
 (PLAT BOOK 91, PAGES 61 - 69)

NOT PLATTED

COORDINATE NOTE:
 STATE PLANE COORDINATES SHOWN ARE GRID DATUM, NAD 83 1990
 ADJUSTMENT, FLORIDA EAST ZONE, COORDINATE SYSTEM 1983 STATE
 PLANE, TRANSVERSE MERCATOR PROJECTION
 LINEAR UNIT = US SURVEY FEET
 ALL DISTANCES ARE GROUND
 SCALE FACTOR = 1.0000139
 GROUND DISTANCE X SCALE FACTOR = GRID DISTANCE



Landmark Surveying & Mapping Inc.
 1850 Forest Hill Boulevard
 Ph. (561) 433-5405 Suite 100 W.P.B. Florida
 LB # 4396

**ISLES AT WELLINGTON PLAT V
 POD "J"**