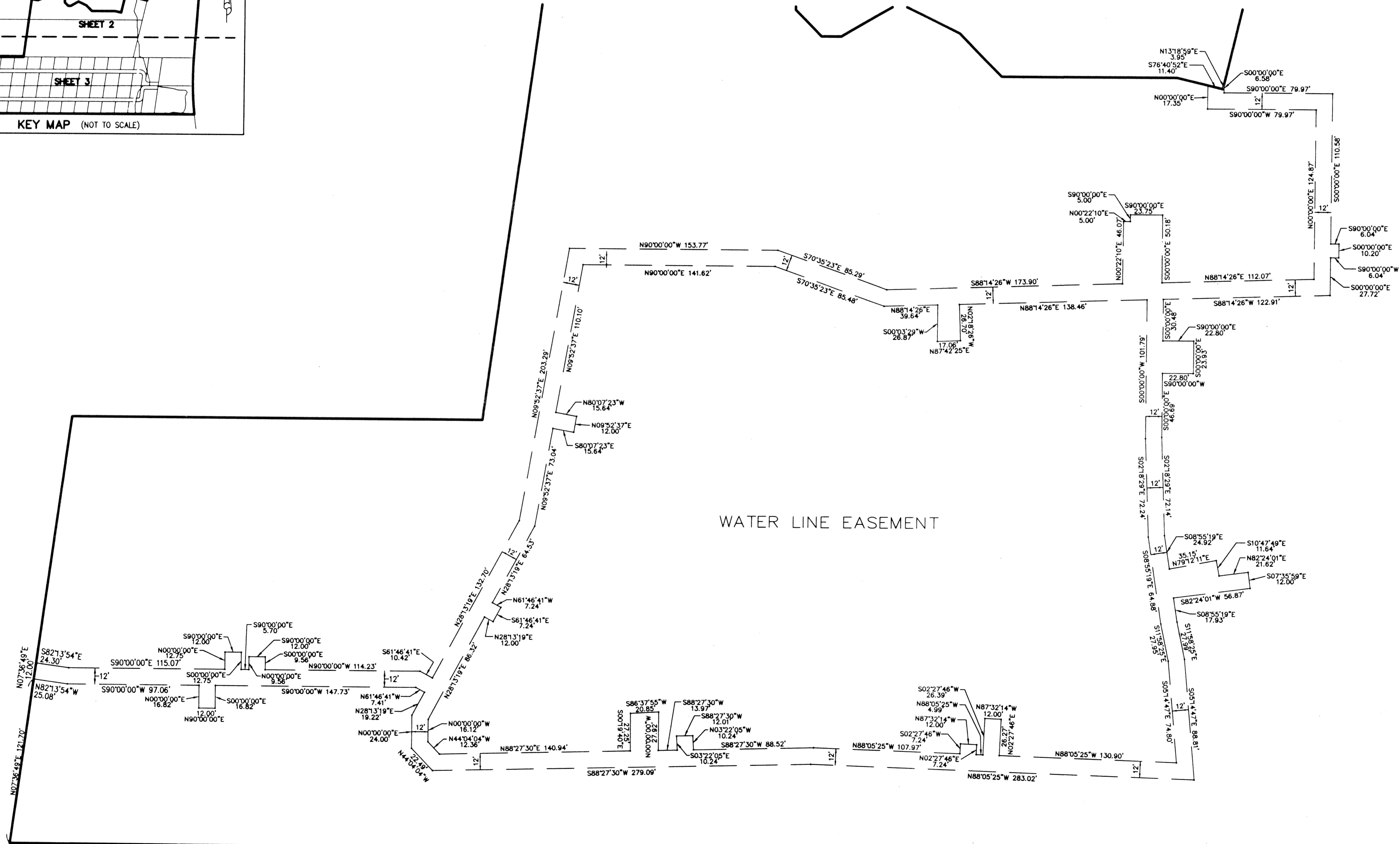
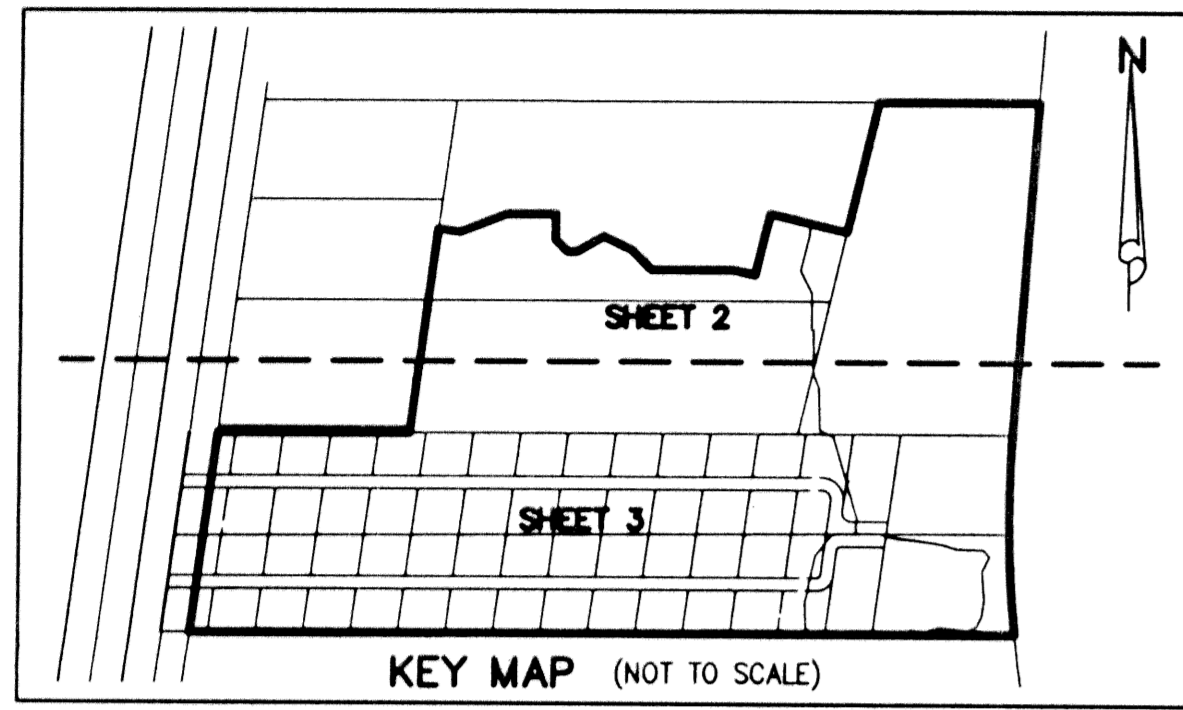
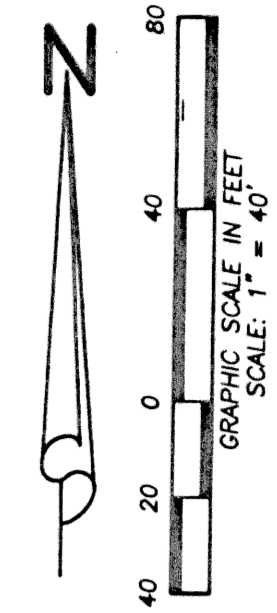


# MANATEE BAY

BEING A REPLAT OF LOTS 1-14, 17-41, 44-57, AND PORTIONS OF LOTS 15, 16, 42 AND 43, LAKE VILLAGE, ACCORDING TO THE PLAT THEREOF, AS RECORDED IN PLAT BOOK 21, PAGE 18, PUBLIC RECORDS, PALM BEACH COUNTY, FLORIDA, TOGETHER WITH PORTIONS OF LOTS 17 & 18, SAM BROWN JR'S SUBDIVISION, ACCORDING TO THE PLAT THEREOF, AS RECORDED IN PLAT BOOK 1, PAGE 81, PUBLIC RECORDS OF PALM BEACH COUNTY, FLORIDA, TOGETHER WITH SUBMERGED LANDS, ALL LYING IN SECTIONS 15 AND 22, TOWNSHIP 45 SOUTH, RANGE 43 EAST, CITY OF BOYNTON BEACH, PALM BEACH COUNTY, FLORIDA,

# 175



- ABBREVIATIONS:**
- D = DELTA
  - FND = FOUND
  - R = RADIUS
  - PG = PAGE(S)
  - MON = MONUMENT
  - DB = DEED BOOK
  - PB = PLAT BOOK
  - L = ARC LENGTH
  - C/L = CENTERLINE
  - ROW = RIGHT-OF-WAY
  - RPB = ROAD PLAT BOOK
  - UE = UTILITY EASEMENT
  - LB = LICENSE BUSINESS
  - DE = DRAINAGE EASEMENT
  - POB = POINT OF BEGINNING
  - ORB = OFFICIAL RECORD BOOK
  - POC = POINT OF COMMENCEMENT
  - L.A.E. = LIMITED ACCESS EASEMENT
  - L.M.E. = LAKE MAINTENANCE EASEMENT
  - PRM = PERMANENT REFERENCE MONUMENT

**LIDBERG LAND SURVEYING, INC.**  
 675 West Indiantown Road, Suite 200,  
 Jupiter, Florida 33458 TEL: 561-746-8454

CAD	K:\AUTOCAD\OLENMANC\0408-306.DWG		
REF	K:\AUTOCAD\OLENMANC\MANCMG01.DWG		
FLD	FB.	PG.	JOB 98-040(306)
OFF	A.J.P.		DATE 01/18/99
CKD	D.C.L.	SHEET 6 OF 9	DWG D98-040P