

GRANDE AT PALM BEACH GARDENS

LYING IN SECTIONS 5 AND 6, TOWNSHIP 42 SOUTH, RANGE 43 EAST.

CITY OF PALM BEACH GARDENS, PALM BEACH COUNTY, FLORIDA

FEBRUARY - 2001

(SHEET 2 OF 4 SHEETS)

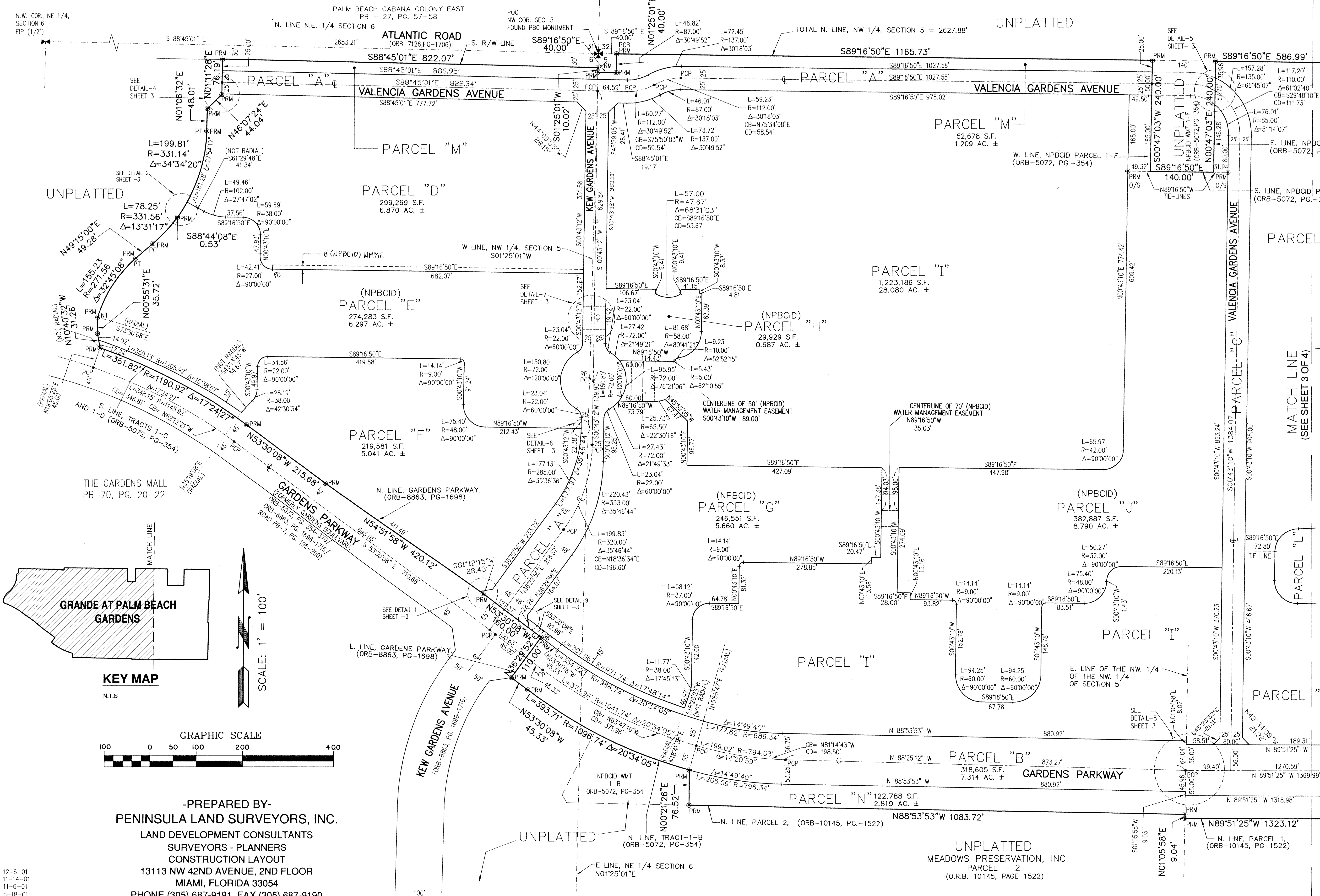
180

STATE OF FLORIDA
COUNTY OF PALM BEACH

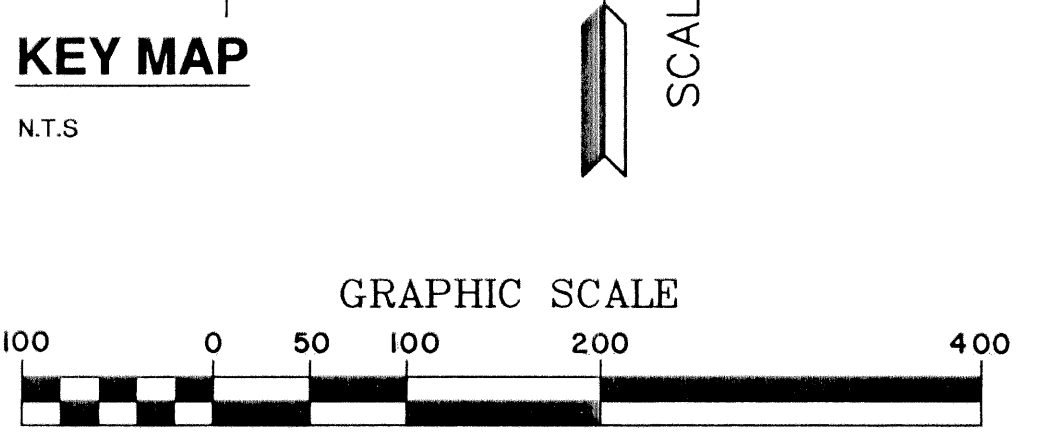
THIS PLAN WAS FILED
FOR RECORD AT _____ M.
THIS _____ DAY OF _____
2001 AND DULY RECORDED IN
PLAT BOOK No. _____ ON
PAGES _____ THROUGH _____

DOROTHY H. WILKEN
CLERK CIRCUIT COURT

BY: _____ D.C.



- LEGEND:**
- S.F. - SQUARE FEET
 - AC. - ACRES
 - ± - MORE OR LESS
 - COR - CORNER
 - DIST. - DISTANCE
 - CL - CENTERLINE
 - PC - POINT OF CURVATURE AND/OR POINT OF TANGENCY
 - PB - PLAT BOOK
 - PG - PAGE
 - FIP - FOUND IRON PIPE
 - ORB - OFFICIAL RECORD BOOK
 - NPBCID - NORTHERN PALM BEACH COUNTY IMPROVEMENT DISTRICT
 - WMT - WATER MANAGEMENT TRACT
 - POC - POINT OF COMMENCEMENT
 - POB - POINT OF BEGINNING
 - SEC - SECTION
 - PBC - PALM BEACH COUNTY
 - RP - RADIUS POINT
 - O/S - OFFSET
 - R/W - RIGHT OF WAY
 - L - ARC LENGTH (DISTANCE)
 - Δ - CENTRAL ANGLE
 - R - RADIUS
 - WMME - WATER MANAGEMENT MAINTENANCE EASEMENT
 - NT - NOT TANGENT
 - PC - POINT OF CURVATURE
 - PT - POINT OF TANGENCY
 - NTS - NOT TO SCALE
 - PRM - SET PERMANENT REFERENCE MONUMENT, 2" DIAMETER BRASS CAP IN 4"x4"x24" CONCRETE MONUMENT, STAMPED PENINSULA LAND SURVEYORS (PRM) RLS # 4277
 - PCP - SET PERMANENT CONTROL POINT PK NAIL AND 1-1/2" BRASS WASHER STAMPED (PCP) LB # 6454
 - CB - CHORD BEARING
 - CD - CHORD DISTANCE
 - WLE - WATER LINE EASEMENT
 - SUA - SEACOAST UTILITY AUTHORITY



-PREPARED BY-
PENINSULA LAND SURVEYORS, INC.
LAND DEVELOPMENT CONSULTANTS
SURVEYORS - PLANNERS
CONSTRUCTION LAYOUT
13113 NW 42ND AVENUE, 2ND FLOOR
MIAMI, FLORIDA 33054
PHONE (305) 687-9191 FAX (305) 687-9190

REV. 12-6-01
REV. 11-14-01
REV. 11-6-01
REV. 5-18-01
REV. 3-28-01
JOB ORDER # 012871

NOTE
SEE SHEET 4 OF 4 FOR UNDERLYING EASEMENTS.