

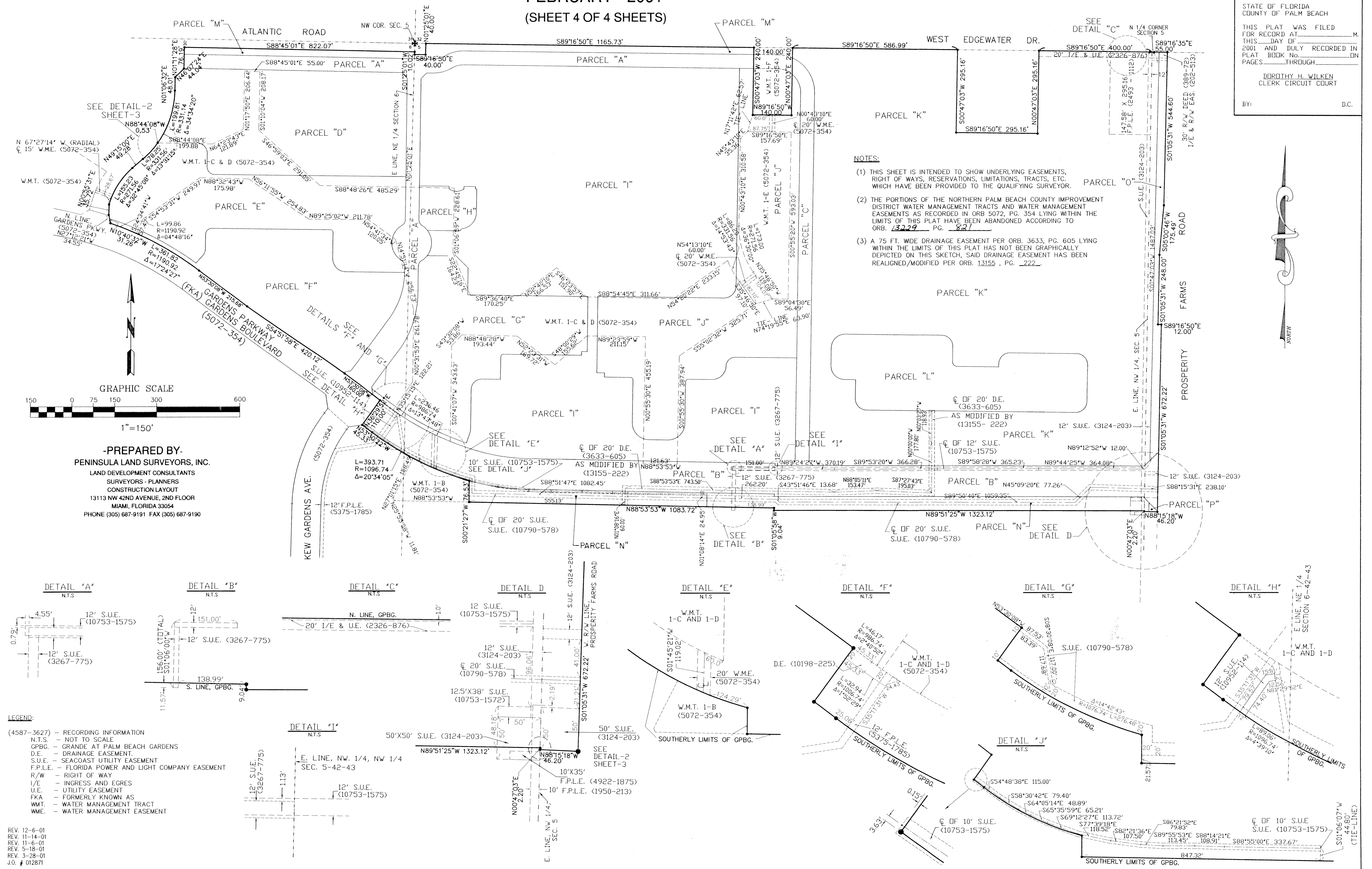
GRANDE AT PALM BEACH GARDENS

LYING IN SECTIONS 5 AND 6, TOWNSHIP 42 SOUTH, RANGE 43 EAST.
 CITY OF PALM BEACH GARDENS, PALM BEACH COUNTY, FLORIDA
 FEBRUARY - 2001
 (SHEET 4 OF 4 SHEETS)

182

STATE OF FLORIDA
 COUNTY OF PALM BEACH
 THIS PLAT WAS FILED
 FOR RECORD AT _____ M.
 THIS DAY OF _____
 2001 AND DULY RECORDED IN
 PLAT BOOK NO. _____ IN
 PAGES _____ THROUGH _____
 DOROTHY H. WILKEN
 CLERK CIRCUIT COURT

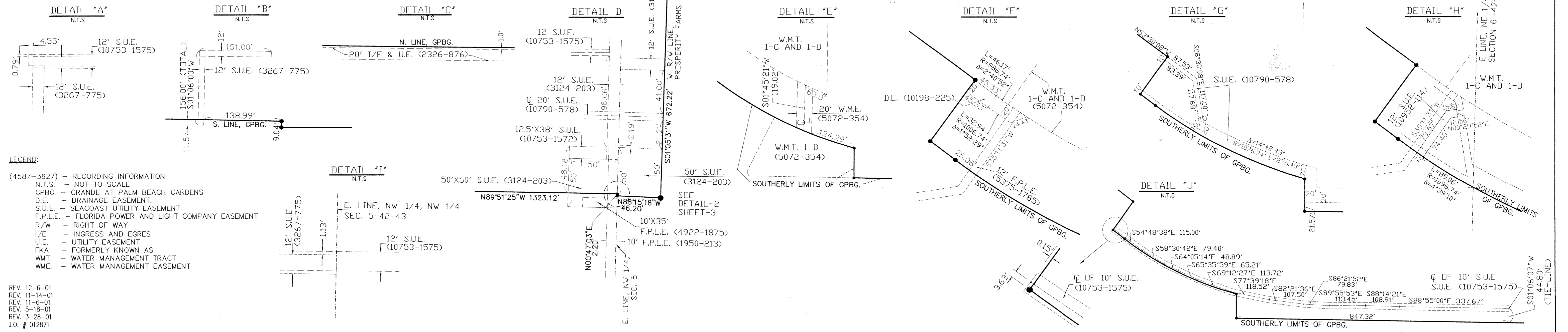
BY: _____ D.C.



NOTES:

- (1) THIS SHEET IS INTENDED TO SHOW UNDERLYING EASEMENTS, RIGHT OF WAYS, RESERVATIONS, LIMITATIONS, TRACTS, ETC. WHICH HAVE BEEN PROVIDED TO THE QUALIFYING SURVEYOR.
- (2) THE PORTIONS OF THE NORTHERN PALM BEACH COUNTY IMPROVEMENT DISTRICT WATER MANAGEMENT TRACTS AND WATER MANAGEMENT EASEMENTS AS RECORDED IN ORB 5072, PG. 354 LYING WITHIN THE LIMITS OF THIS PLAT HAVE BEEN ABANDONED ACCORDING TO ORB. 13229, PG. 821
- (3) A 75 FT. WIDE DRAINAGE EASEMENT PER ORB. 3633, PG. 605 LYING WITHIN THE LIMITS OF THIS PLAT HAS NOT BEEN GRAPHICALLY DEPICTED ON THIS SKETCH. SAID DRAINAGE EASEMENT HAS BEEN REALIGNED/MODIFIED PER ORB. 13155, PG. 222.

-PREPARED BY-
PENINSULA LAND SURVEYORS, INC.
 LAND DEVELOPMENT CONSULTANTS
 SURVEYORS - PLANNERS
 CONSTRUCTION LAYOUT
 13113 NW 42ND AVENUE, 2ND FLOOR
 MIAMI, FLORIDA 33054
 PHONE (305) 687-9191 FAX (305) 687-9190



- LEGEND:**
- (4587-3627) - RECORDING INFORMATION
 - N.T.S. - NOT TO SCALE
 - GPBG. - GRANDE AT PALM BEACH GARDENS
 - D.E. - DRAINAGE EASEMENT
 - S.U.E. - SEACOAST UTILITY EASEMENT
 - F.P.L.E. - FLORIDA POWER AND LIGHT COMPANY EASEMENT
 - R/W - RIGHT OF WAY
 - I/E - INGRESS AND EGRES
 - U.E. - UTILITY EASEMENT
 - FKA - FORMERLY KNOWN AS
 - W.M.T. - WATER MANAGEMENT TRACT
 - W.M.E. - WATER MANAGEMENT EASEMENT

REV. 12-6-01
 REV. 11-14-01
 REV. 11-6-01
 REV. 5-18-01
 REV. 3-28-01
 J.O. # 012871