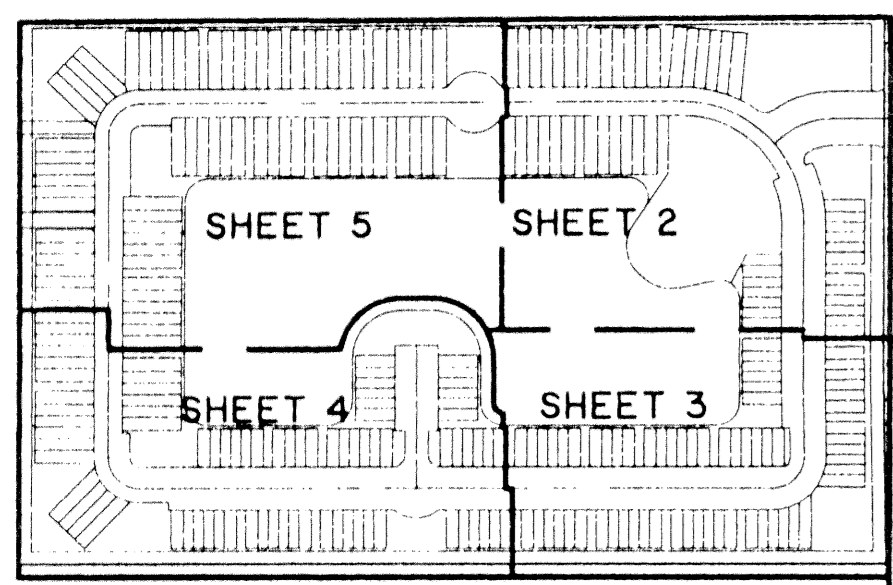


PALMBROOKE TOWNHOMES

LYING IN SECTION 12, TOWNSHIP 43 SOUTH, RANGE 42 EAST,
CITY OF WEST PALM BEACH, PALM BEACH COUNTY, FLORIDA.
SHEET 2 OF 5

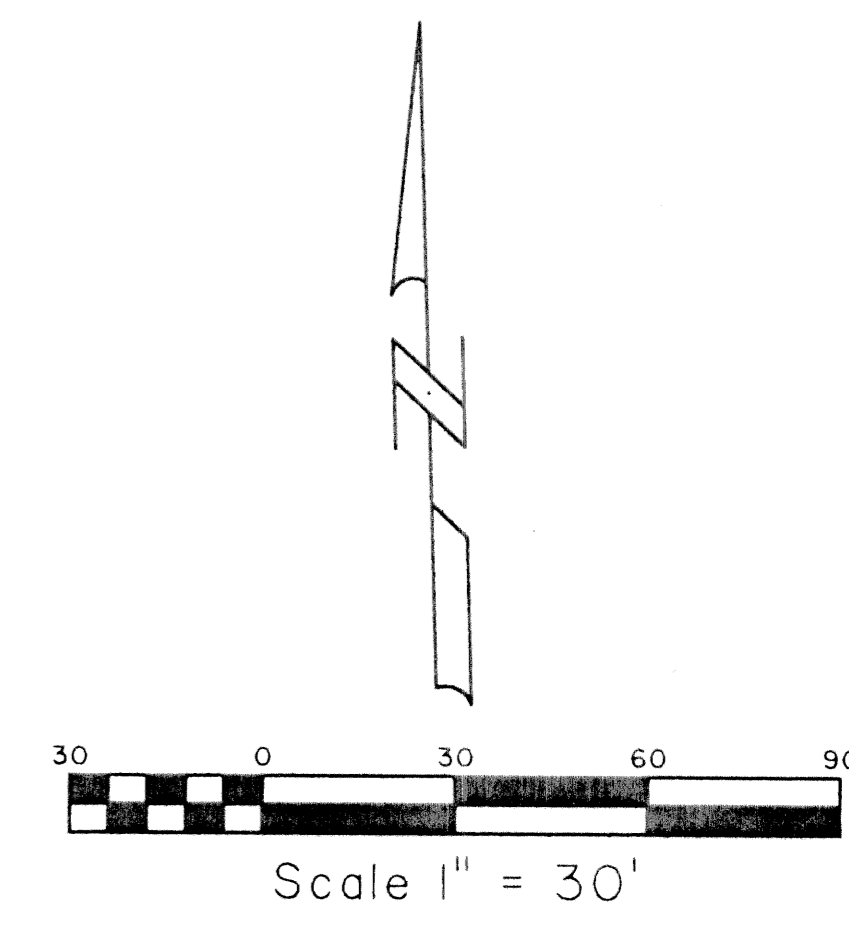
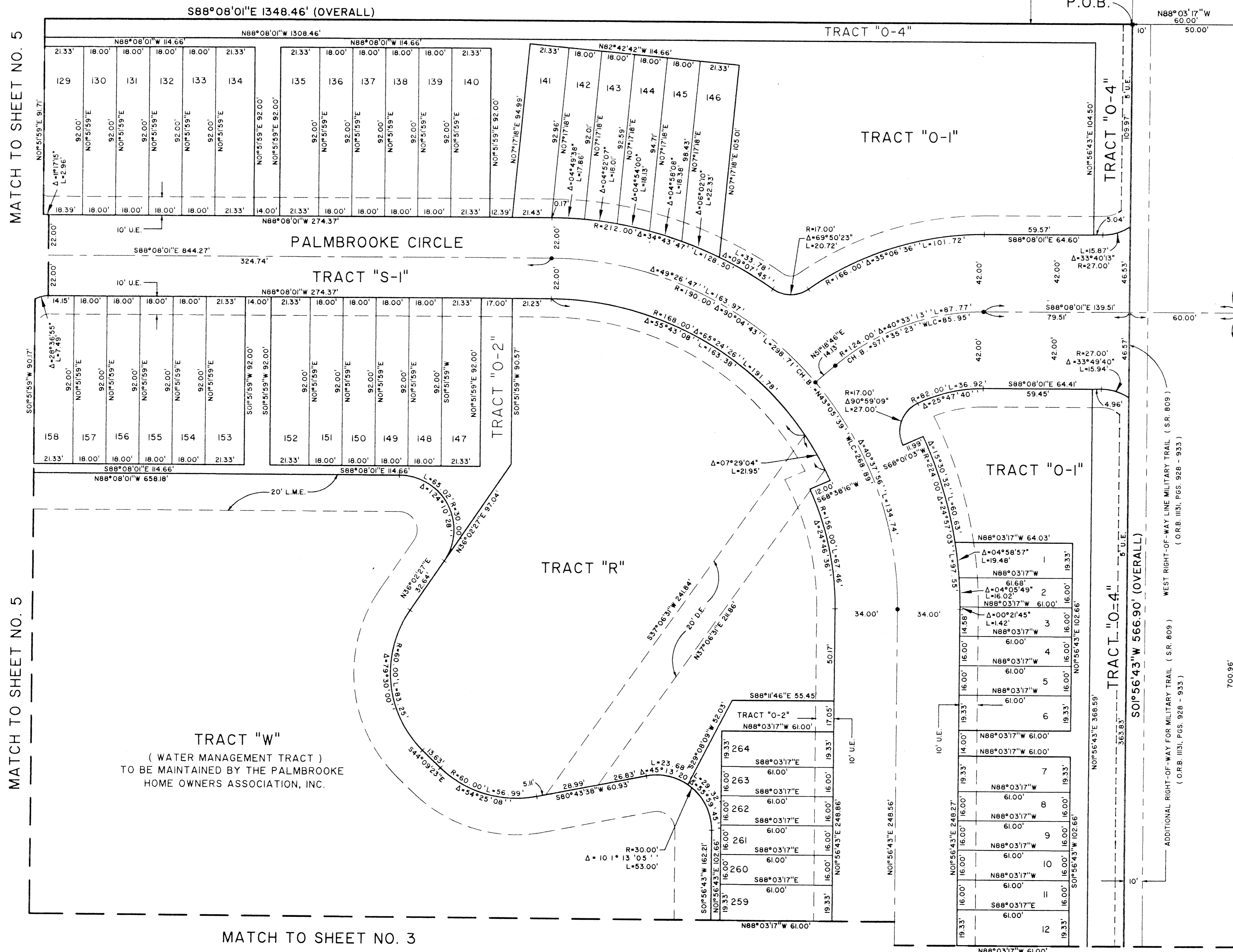


KEY MAP
NOT TO SCALE

PUBLIC WATER SUPPLY AREA
WEST PALM BEACH WATER COMPANY
(PLAT BOOK 23, PAGE 149)

184

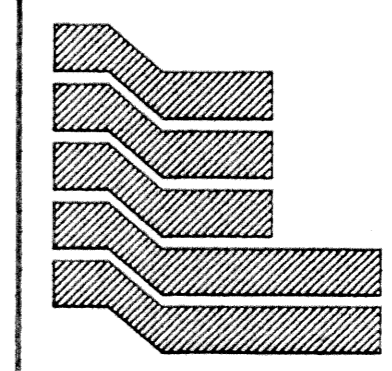
STATE OF FLORIDA 55
COUNTY OF PALM BEACH
THIS PLAT WAS FILED FOR RECORD AT _____
M., THIS DAY OF _____ 2001
AND DULY RECORDED IN PLAT BOOK NO. _____
ON PAGE _____
DOROTHY H. WILKEN, CLERK OF THE CIRCUIT COURT
BY _____ D.C.



MILITARY TRAIL (S.R. 609)

WEST RIGHT-OF-WAY LINE MILITARY TRAIL (S.R. 609)
(O.R.B. III, PGS. 928 - 933)

ADDITIONAL RIGHT-OF-WAY FOR MILITARY TRAIL (S.R. 609)
(O.R.B. III, PGS. 928 - 933)



Landmark Surveying & Mapping Inc.
1850 Forest Hill Boulevard
Ph. (561) 433-5405 Suite 100 W.P.B. Florida
LB # 4396

PALMBROOKE TOWNHOMES

MATCH TO SHEET NO. 3

MATCH TO SHEET NO. 5

MATCH TO SHEET NO. 5

MATCH TO SHEET NO. 3

P.O.B.

P.O.C.

NORTH LINE OF SECTION 12,
TOWNSHIP 43 SOUTH, RANGE 42 EAST

NORTH QUARTER CORNER OF SECTION 12,
TOWNSHIP 43 SOUTH, RANGE 42 EAST