

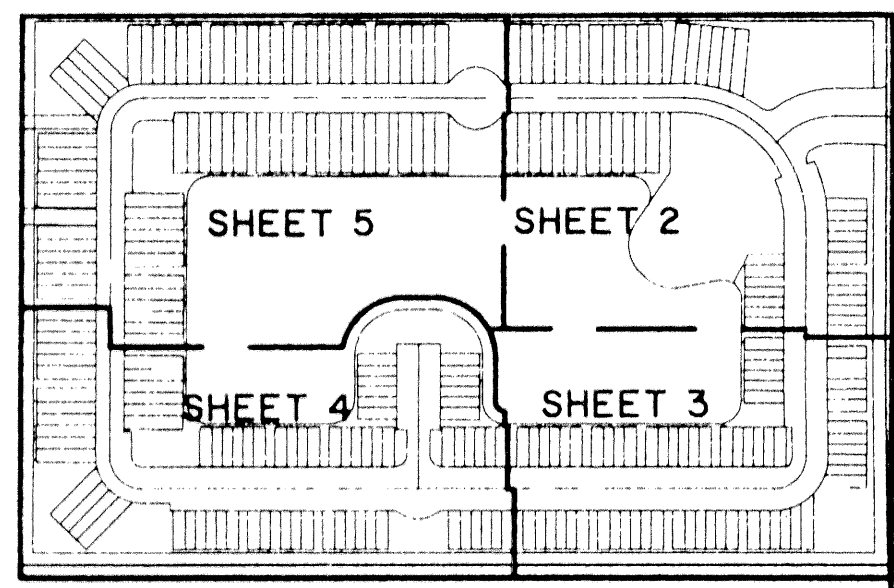
PALMBROOKE TOWNHOMES

LYING IN SECTION 12, TOWNSHIP 43 SOUTH, RANGE 42 EAST,
CITY OF WEST PALM BEACH, PALM BEACH COUNTY, FLORIDA.

SHEET 3 OF 5

185

STATE OF FLORIDA 55
COUNTY OF PALM BEACH
THIS PLAT WAS FILED FOR RECORD AT _____
M., THIS _____ DAY OF _____ 2001
AND DULY RECORDED IN PLAT BOOK NO. _____
ON PAGE _____
DOROTHY H. WILKEN, CLERK OF THE CIRCUIT COURT
BY _____ D.C.



KEY MAP
NOT TO SCALE

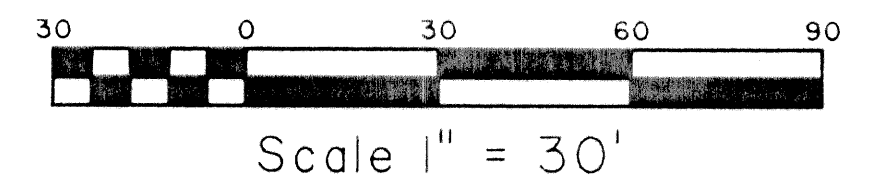
MATCH TO SHEET NO. 5

MATCH TO SHEET NO. 2

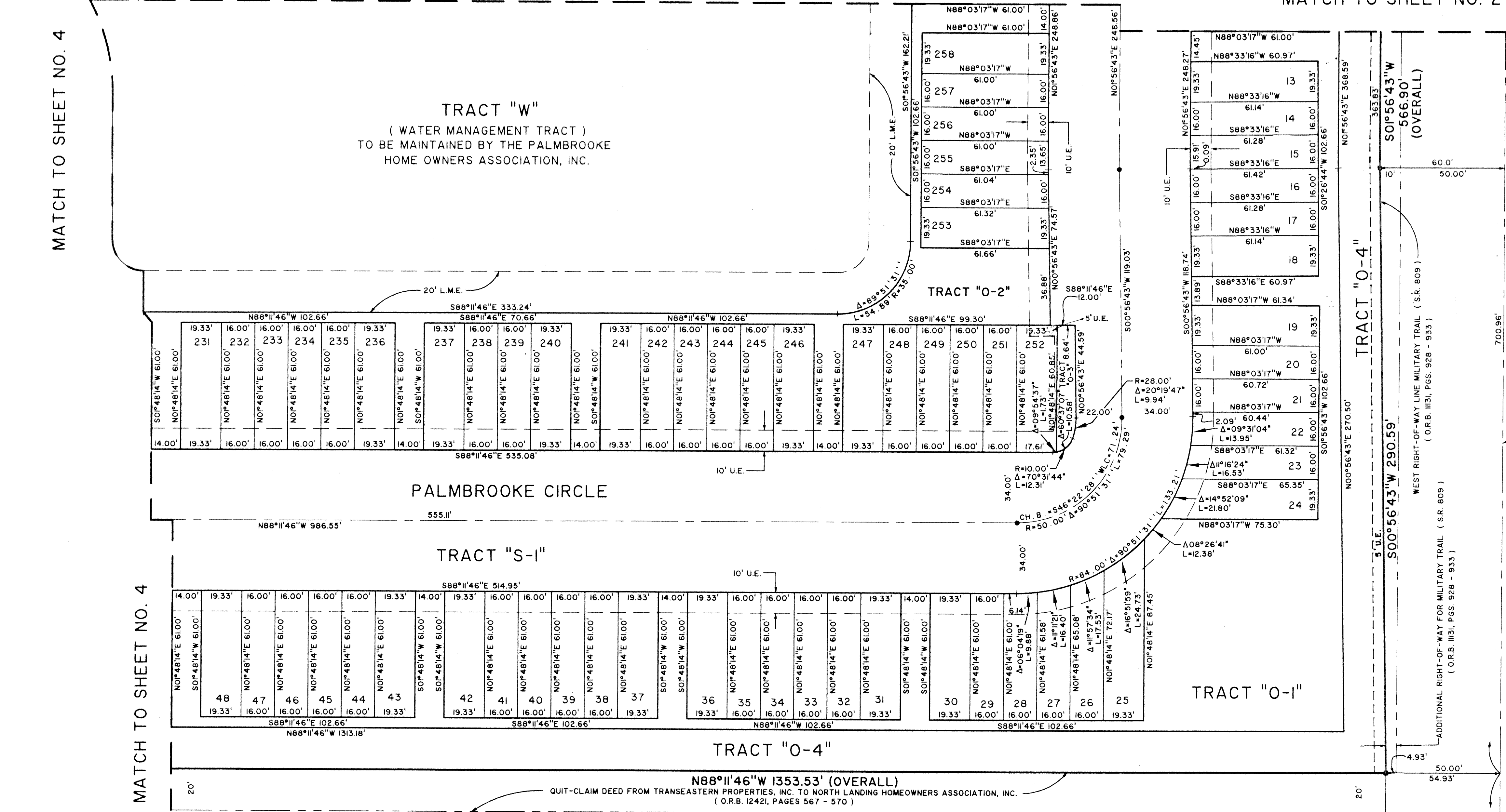
MATCH TO SHEET NO. 2

MATCH TO SHEET NO. 4

MILITARY TRAIL (S.R. 809)



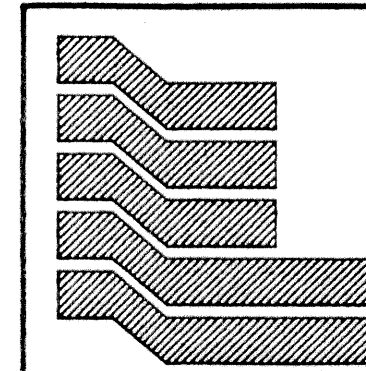
Scale 1" = 30'



NOT PLATTED

SOUTH QUARTER CORNER OF SECTION 12,
TOWNSHIP 43 SOUTH, RANGE 42 EAST

N88°03'17"W



Landmark Surveying & Mapping Inc.
1850 Forest Hill Boulevard
Ph. (561) 433-5405 Suite 100 W.P.B. Florida
LB # 4396

PALMBROOKE TOWNHOMES