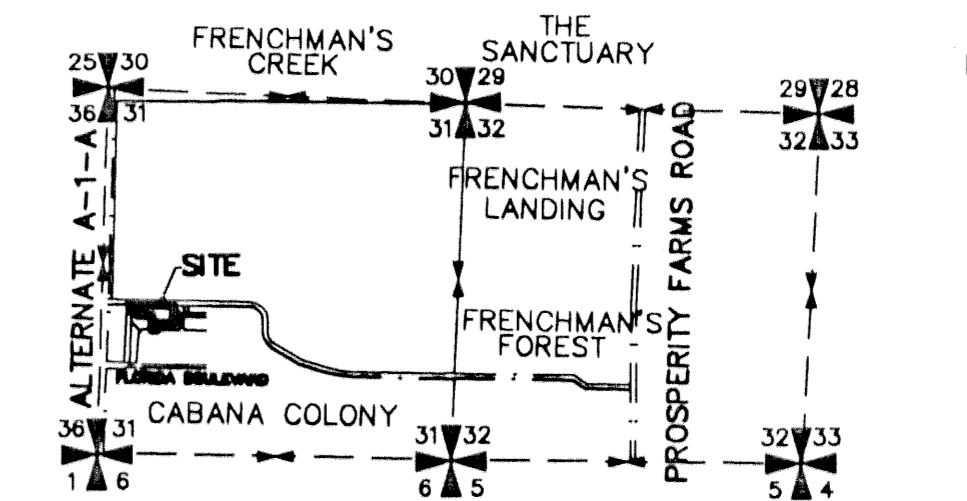


FRENCHMAN'S RESERVE PCD - GOLF MAINTENANCE

BEING A REPLAT OF TRACT D AND LOT 1, BLOCK 28,
AND A PORTION OF TRACT C OF
PALM BEACH CABANA COLONY, PLAT NO. 2
AS RECORDED IN PLAT BOOK 26, PAGES 238-239

LYING IN SECTIONS 31, TOWNSHIP 41 SOUTH,
RANGE 43 EAST, CITY OF PALM BEACH GARDENS
PALM BEACH COUNTY, FLORIDA.

AUGUST, 2001 SHEET 2 OF 2

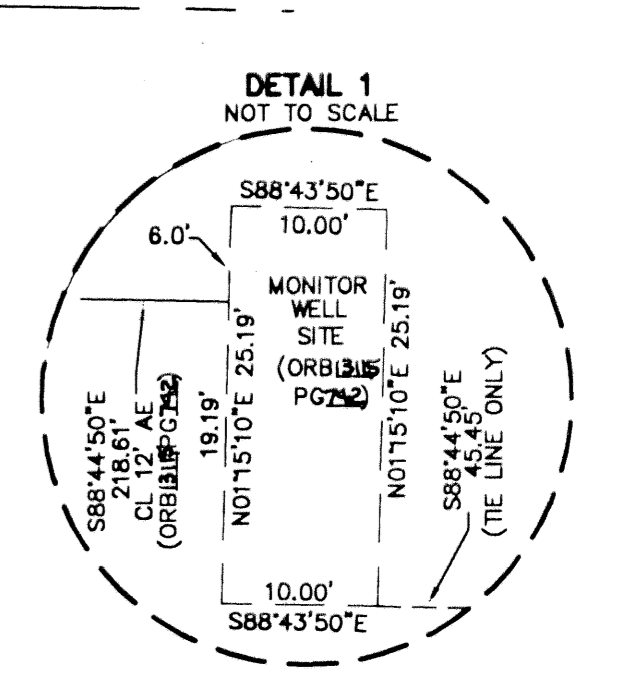
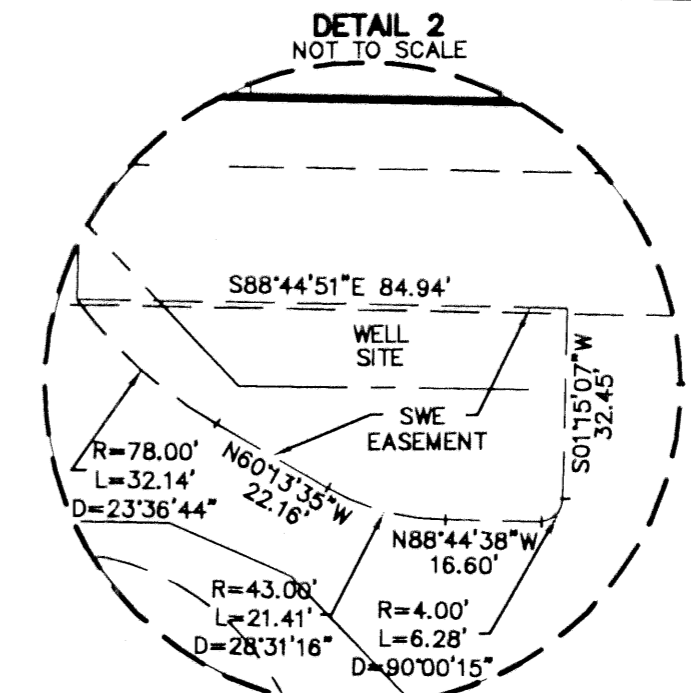
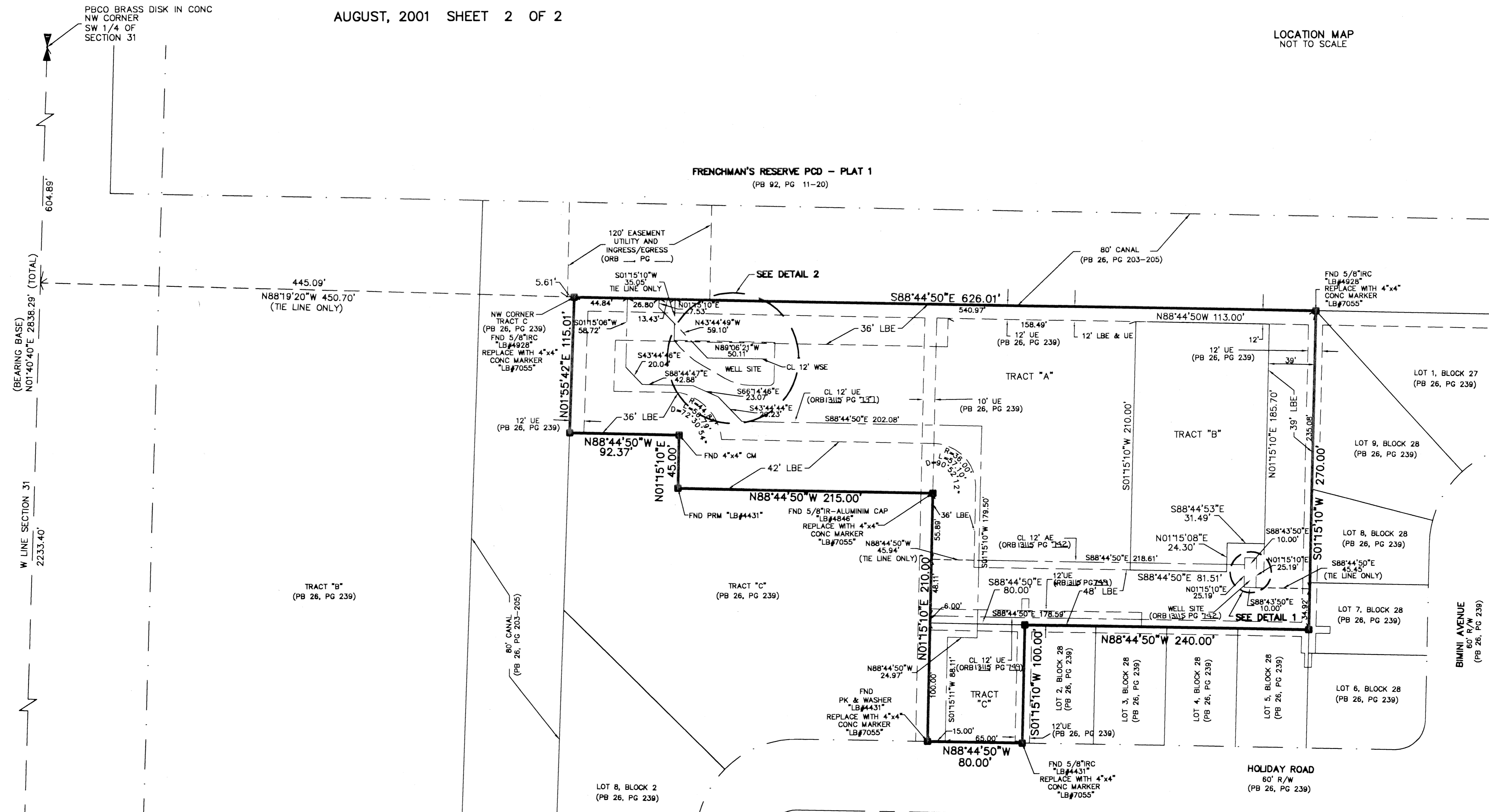
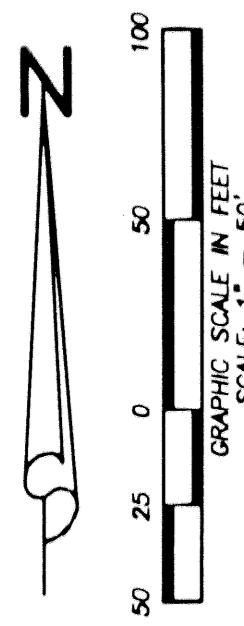


193

STATE OF FLORIDA
COUNTY OF PALM BEACH
THIS PLAT WAS FILED FOR
RECORD AT _____ M.
THIS _____ DAY OF _____
A.D. 2001 AND DULY RECORDED
IN PLAT BOOK _____ ON
PAGES _____ AND _____

DOROTHY H. WILKEN
CLERK CIRCUIT COURT

BY: _____
DEPUTY CLERK



- LEGEND:**
- AE = ACCESS EASEMENT
 - CL = CENTERLINE
 - WSE = WATER AND SEWER EASEMENT
 - PBCO = PALM BEACH COUNTY
 - LAE = LIMITED ACCESS EASEMENT
 - LBE = LANDSCAPE BUFFER EASEMENT
 - LSE = LIFT STATION EASEMENT
 - (C) = CALCULATED
 - OMB = COMMISSIONERS' MINUTES BOOK
 - DE = DRAINAGE EASEMENT
 - DB = DEED BOOK
 - FND = FOUND
 - FPL = FLORIDA POWER & LIGHT
 - IP = IRON PIPE
 - IRC = IRON ROD WITH PLASTIC CAP
 - LB = LICENSED BUSINESS
 - LS = LICENSED SURVEY
 - (M) = MEASURED
 - MCCB = MINUTES OF THE COUNTY COMMISSIONER'S BOOK
 - MON = MONUMENT
 - ORB = OFFICIAL RECORD BOOK
 - (P) = PLAT
 - PB = PLAT BOOK
 - POB = POINT OF BEGINNING
 - POC = POINT OF COMMENCEMENT
 - PRM = PERMANENT REFERENCE MONUMENT
 - R/W = RIGHT-OF-WAY
 - R/PB = ROAD PLAT BOOK
 - (S) = SURVEY
 - UE = UTILITY EASEMENT
 - = PERMANENT CONTROL POINT
 - = SET 4"x4" CONCRETE MONUMENT "LB#7055" (UNLESS OTHERWISE NOTED)

Wantman Group, Inc.
Engineering ♦ Surveying ♦ Mapping
901 NORTHPOINT PARKWAY, SUITE 204
WEST PALM BEACH, FL 33407
(561) 687-2220 phone (561) 687-1110 fax
CERT No. 6091 - LB No. 7055

CAD	K:\TOLLBROS\FRENCHMAN\DWG\218PLATGM		
REF	K:\TOLLBROS\FRENCHMAN\DWG\218MG01		
FLD	RP/AB	FB. 000 PG. 00	JOB 218-PLAT
OFF	AJP/MRU		DATE 06/26/01
CKD	RBP	SHEET 2 OF 2	DWG