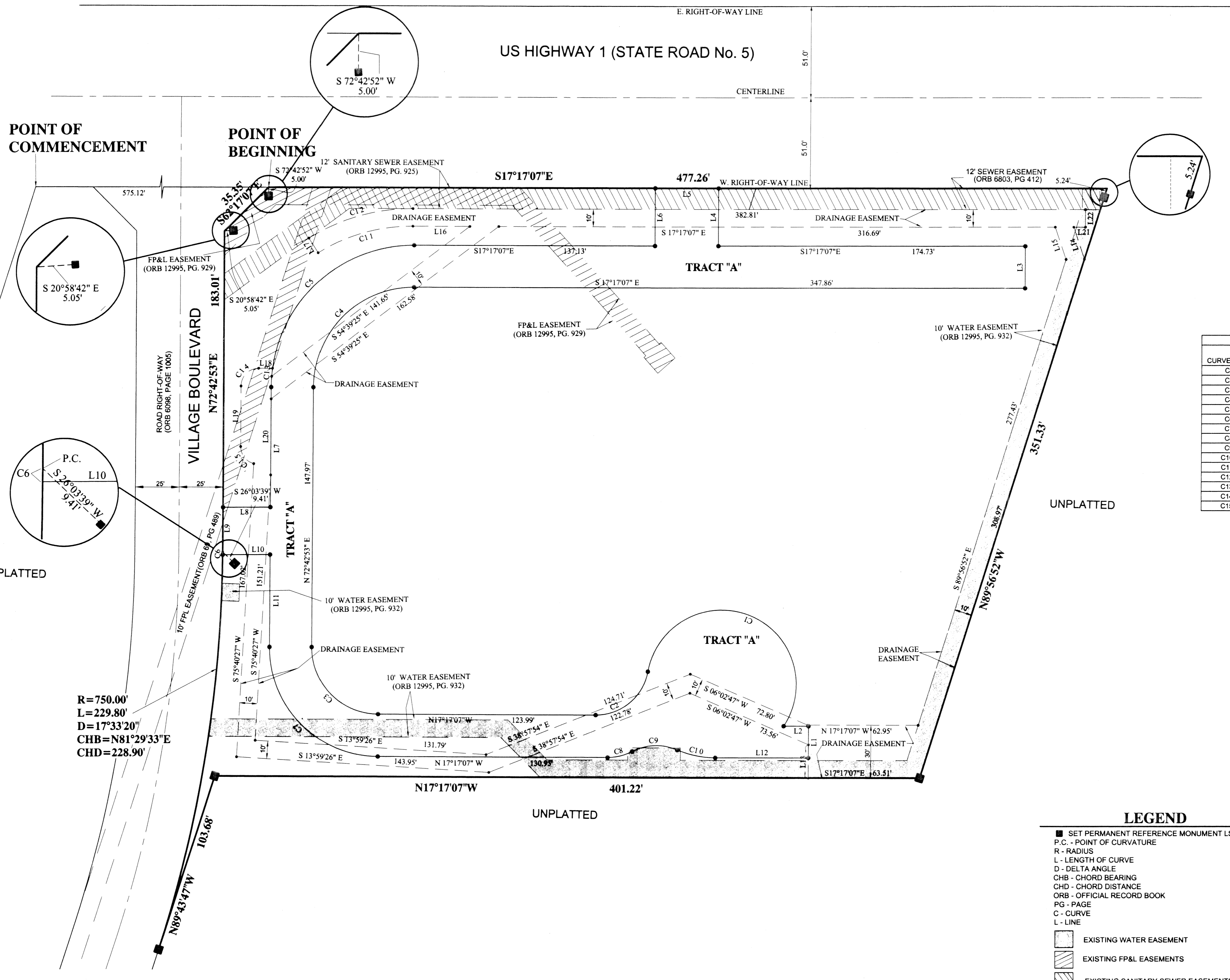
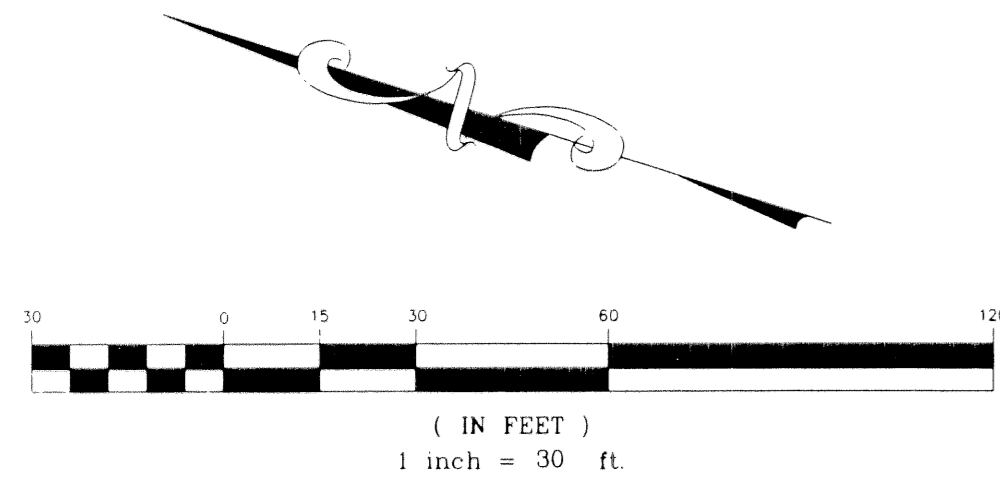


TEQUESTA TERRACE

LYING WITHIN GOVERNMENT LOT 2,
SECTION 30, TOWNSHIP 40 SOUTH, RANGE 43 EAST,
VILLAGE OF TEQUESTA, PALM BEACH COUNTY, FLORIDA
DECEMBER 2001



LINE TABLE		
LINE	LENGTH	BEARING
L1	18.00	N72°42'53"E
L2	14.18	N17°17'07"W
L3	24.00	S72°42'53"W
L4	33.03	S72°43'22"W
L5	36.00	S17°16'38"E
L6	33.04	S72°43'22"W
L7	66.39	N72°42'53"E
L8	27.00	S17°39'01"E
L9	25.44	S72°42'53"W
L10	27.00	S17°39'01"E
L11	52.58	N72°42'53"E
L12	52.90	N17°17'07"W
L13	18.88	S72°42'53"W
L14	19.45	S54°09'39"W
L15	19.57	S54°09'39"W
L16	32.53	S17°17'07"E
L17	10.02	S40°12'42"W
L18	7.95	S17°39'01"E
L19	34.53	S72°42'53"W
L20	43.34	S72°42'53"W
L21	6.61	N17°17'07"W
L22	10.00	N72°42'53"E

CURVE TABLE					
CURVE	LENGTH	RADIUS	DELTA ANGLE	CHORD BEARING	CHORD DISTANCE
C1	150.88	42.50	203°24'01"	N04°25'22"E	83.23
C2	41.88	30.00	79°59'31"	S57°16'53"E	38.56
C3	59.69	38.00	90°00'00"	S27°42'53"W	53.74
C4	89.54	57.00	90°00'00"	N62°17'07"W	80.61
C5	127.23	81.00	90°00'00"	N62°17'07"W	114.55
C6	1.56	750.00	0°07'10"	N72°48'28"E	1.56
C7	97.39	62.00	90°00'00"	S27°42'53"W	87.86
C8	14.46	30.00	27°36'46"	S31°05'30"E	14.32
C9	26.57	30.00	50°44'43"	N19°31'32"W	25.71
C10	22.21	55.00	23°07'57"	S05°43'09"E	22.05
C11	56.78	100.00	32°32'07"	N33°17'34"W	56.02
C12	62.46	110.00	32°32'07"	N33°17'34"W	61.63
C13	4.57	81.00	3°14'04"	S78°37'54"W	4.57
C14	15.64	10.00	89°38'06"	N62°28'04"W	14.10
C15	13.19	10.00	75°32'44"	S34°56'31"W	12.25

R=750.00'
L=229.80'
D=17°33'20"
CHB=N81°29'33"E
CHD=228.90'

- LEGEND**
- SET PERMANENT REFERENCE MONUMENT LS # 2439
 - P.C. - POINT OF CURVATURE
 - R - RADIUS
 - L - LENGTH OF CURVE
 - D - DELTA ANGLE
 - CHB - CHORD BEARING
 - CHD - CHORD DISTANCE
 - ORB - OFFICIAL RECORD BOOK
 - PG - PAGE
 - C - CURVE
 - L - LINE
 - EXISTING WATER EASEMENT
 - EXISTING FP&L EASEMENTS
 - EXISTING SANITARY SEWER EASEMENTS

SHEET 2 OF 2

DAILEY
AND ASSOCIATES, INC.
Surveying and Mapping
112 N. U.S. HIGHWAY NO. 1
TEQUESTA, FLORIDA 33469
PHONE: (561) 746-8424