

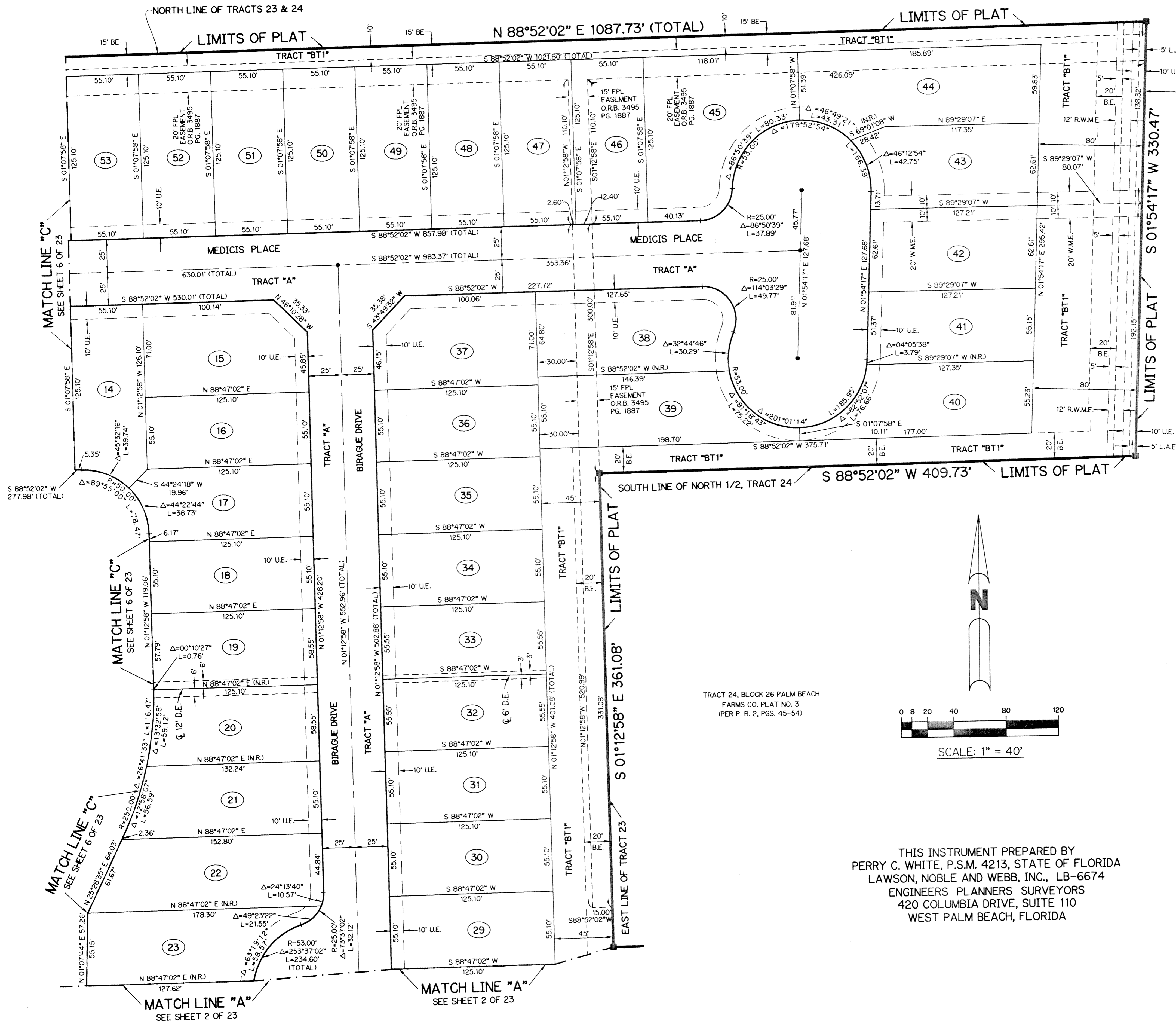
# VERSAILLES P.U.D.

BEING ALL OF TRACTS 14, 21, 22, 23, 26, 27, 28 AND A PORTION OF TRACTS 19, 20, 24, 25, 29, 30, 31, 32, AND A PORTION OF THE ABUTTING ROAD, DITCH AND DYKE RESERVATIONS, ALL LYING IN BLOCK 26, THE PALM BEACH FARMS CO. PLAT NO. 3, AS RECORDED IN PLAT BOOK 2, PAGES 45 THROUGH 54, INCLUSIVE, OF THE PUBLIC RECORDS OF PALM BEACH COUNTY, FLORIDA, TOGETHER WITH A PORTION OF THE SOUTHWEST QUARTER OF SECTION 24, TOWNSHIP 44 SOUTH, RANGE 41 EAST, SITUATE, LYING AND BEING IN PALM BEACH COUNTY, FLORIDA.

SHEET 3 OF 23 AUGUST, 2001

PALM BEACH FARMS CO.  
PLAT NO. 3, BLOCK 26  
(PER P. B. 2, PGS. 45-54)

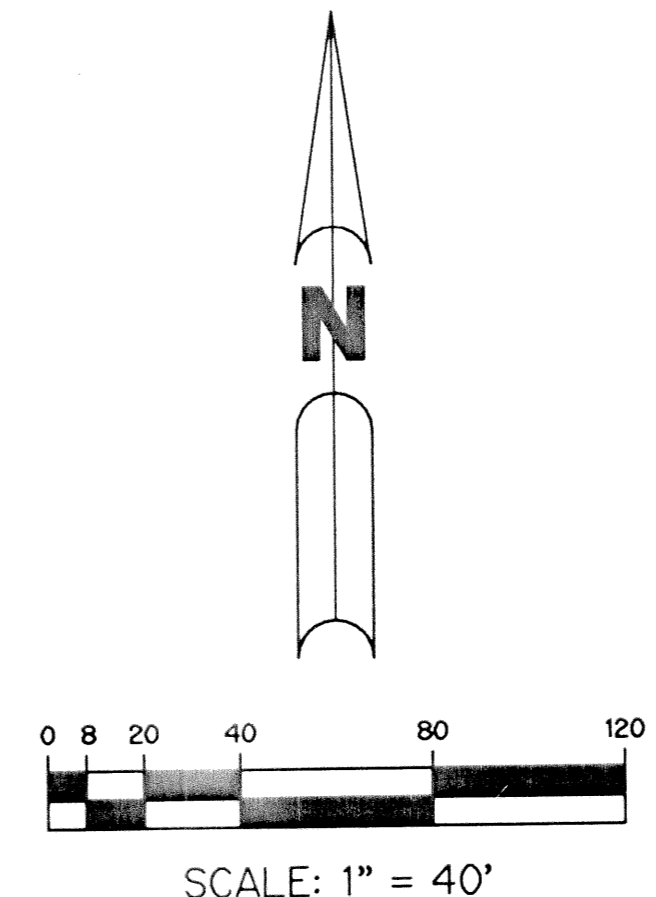
19



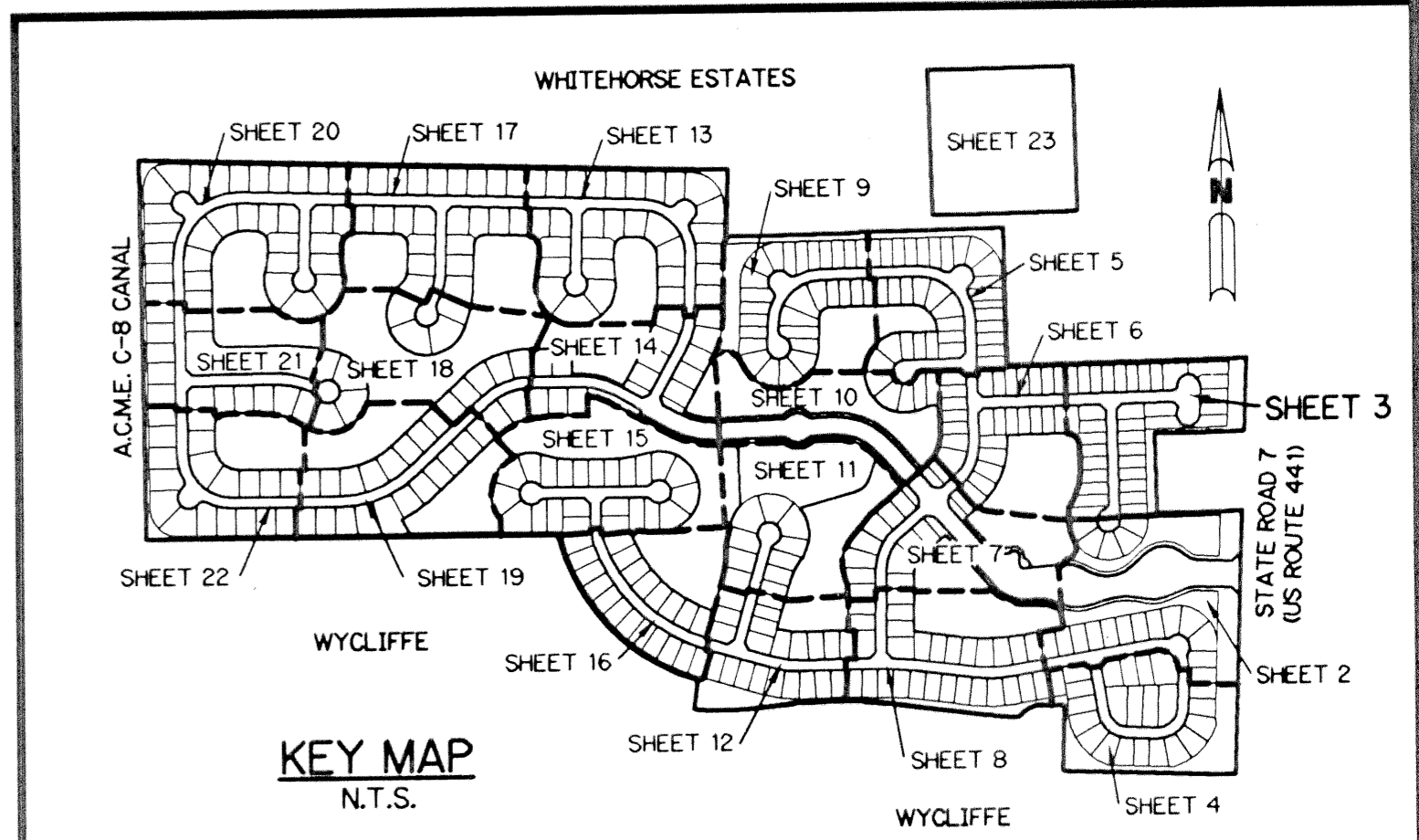
STATE ROAD 7 (U.S. ROUTE 441)  
(165' R/W PER O.R.B. 9488, PG. 1661)

- LEGEND:**
- - SET PERMANENT REFERENCE MONUMENT, LB-6674
  - - PERMANENT CONTROL POINT, LB-6674
  - Δ - DELTA ANGLE
  - B.E. - BUFFER EASEMENT
  - C - CENTERLINE
  - C.B. - CHORD BEARING
  - C.L. - CHORD LENGTH
  - D.B. - DEED BOOK
  - D.E. - DRAINAGE EASEMENT
  - F.M.E. - FORCE MAIN EASEMENT
  - L - ARC LENGTH
  - L.A.E. - LIMITED ACCESS EASEMENT
  - L.M.A.E. - LAKE MAINTENANCE ACCESS EASEMENT
  - L.M.E. - LAKE MAINTENANCE EASEMENT
  - L.W.D.D. - LAKE WORTH DRAINAGE DISTRICT
  - N.R. - NOT RADIAL
  - N.T.S. - NOT TO SCALE
  - O.R.B. - OFFICIAL RECORD BOOK
  - P.B. - PLAT BOOK
  - PGS. - PAGES
  - P.S.M. - PROFESSIONAL SURVEYOR AND MAPPER
  - R.W.M.E. - RAW WATER MAIN EASEMENT
  - R - RADIUS
  - R/W - RIGHT-OF-WAY
  - S.S.E. - SANITARY SEWER EASEMENT
  - S.T. - SURVEY TIE
  - U.E. - UTILITY EASEMENT
  - W.M.E. - WATER MAIN EASEMENT

TRACT 24, BLOCK 26 PALM BEACH FARMS CO. PLAT NO. 3 (PER P. B. 2, PGS. 45-54)



THIS INSTRUMENT PREPARED BY  
PERRY C. WHITE, P.S.M. 4213, STATE OF FLORIDA  
LAWSON, NOBLE AND WEBB, INC., LB-6674  
ENGINEERS PLANNERS SURVEYORS  
420 COLUMBIA DRIVE, SUITE 110  
WEST PALM BEACH, FLORIDA



KEY MAP  
N.T.S.