



CARNAHAN · PROCTOR · CROSS, INC.

CONSULTING ENGINEERS · SURVEYORS · PLANNERS

6101 WEST ATLANTIC BOULEVARD, MARGATE, FLORIDA 33063
PHONE: 954-972-3959 FAX: 954-972-4178

APRIL 2001

991010

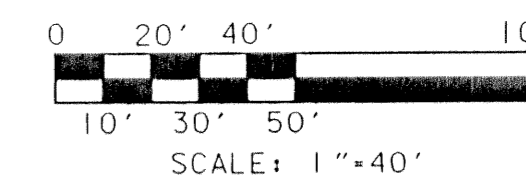
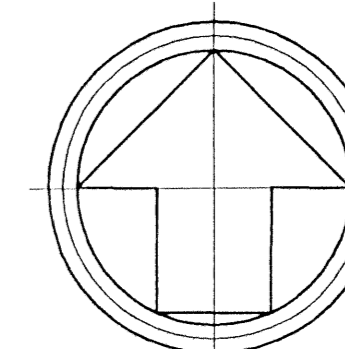
JSH

ANTHONY GROVES P.U.D.

ANTHONY GROVES PHASE 1

A PORTION OF SECTION 1, TOWNSHIP 44 SOUTH, RANGE 41 EAST,
VILLAGE OF ROYAL PALM BEACH, PALM BEACH COUNTY, FLORIDA

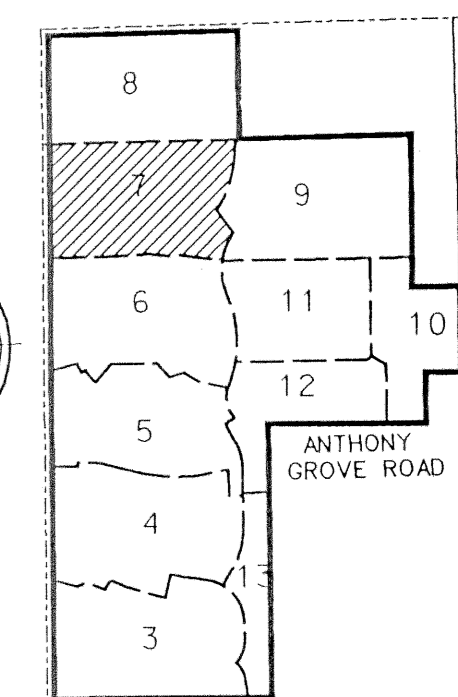
(SEE SHEET 8)



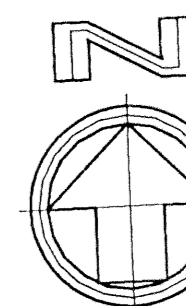
46

SHEET 7 OF 13

(SEE SHEET 9)

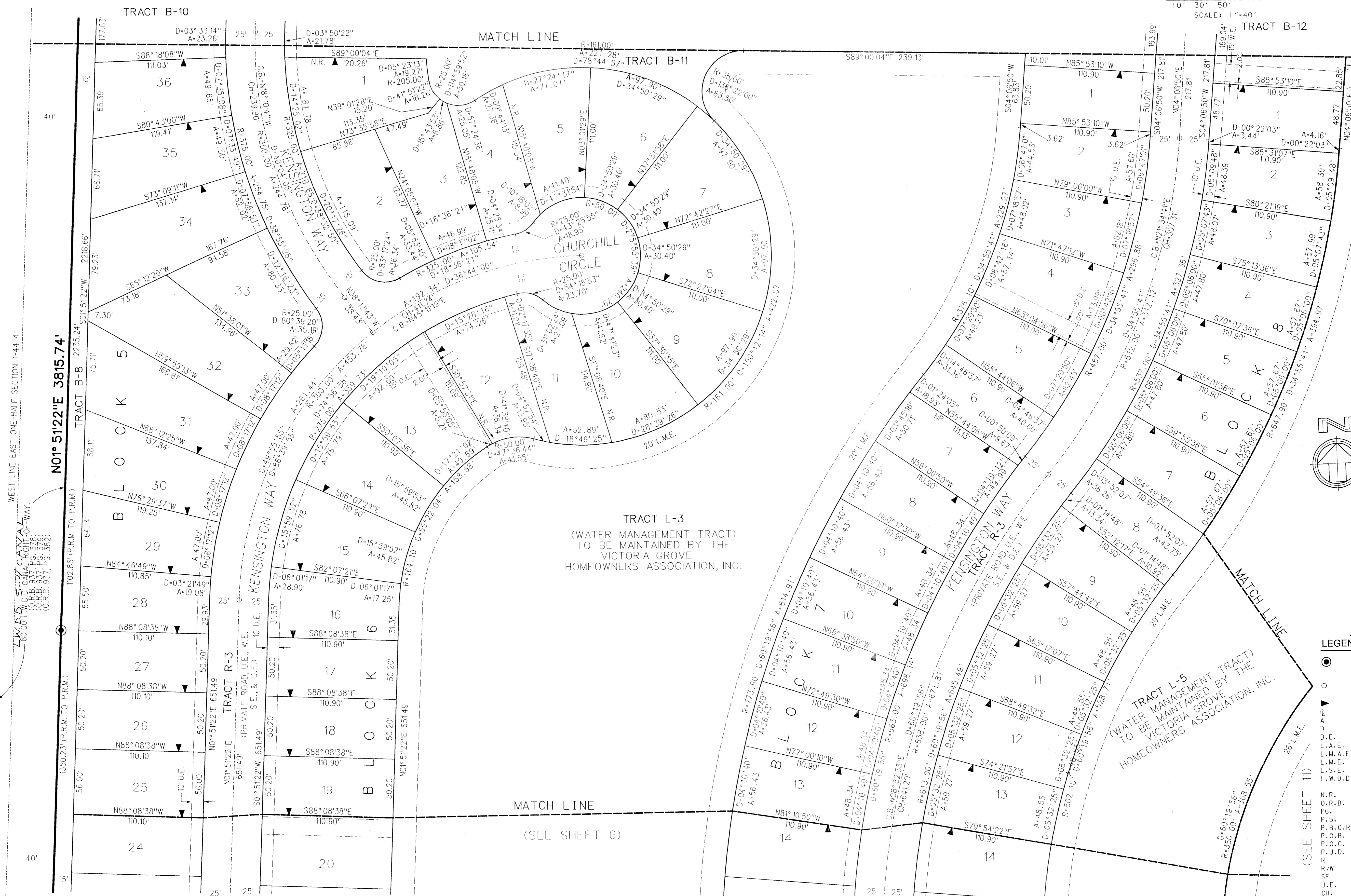


KEY MAP
N.T.S.



LEGEND:

- SET PERMANENT REFERENCE MONUMENT (P.R.M.) - LB2936 UNLESS OTHERWISE NOTED
- PERMANENT CONTROL POINT (P.C.P.)
- ZERO LOT SIDE
- CENTERLINE
- ARC LENGTH
- DELTA (CENTRAL ANGLE)
- DRAINAGE EASEMENT
- LIMITED ACCESS EASEMENT
- LAKE MAINTENANCE ACCESS EASEMENT
- LAKE MAINTENANCE EASEMENT
- LIFT STATION EASEMENT
- LAKE WORTH DRAINAGE DISTRICT
- NON-RADIAL
- OFFICIAL RECORDS BOOK
- PAGE
- PLAT BOOK
- PALM BEACH COUNTY RECORDS
- POINT OF BEGINNING
- POINT OF COMMENCEMENT
- PLANNED UNIT DEVELOPMENT
- RADIUS
- RIGHT-OF-WAY
- SQUARE FEET
- UTILITY EASEMENT
- CHORD
- CHORD BEARING
- WATER EASEMENT
- SEWER EASEMENT



FILE: r:\991010\cd005\1\0pp1.dgn
DATE: 17-Sep-01 13:59