

CARNAHAN · PROCTOR · CROSS, INC.

CONSULTING ENGINEERS · SURVEYORS · PLANNERS

6101 WEST ATLANTIC BOULEVARD, MARGATE, FLORIDA 33063  
PHONE: 954-972-3959 FAX: 954-972-4178

APRIL 2001

991010

JSH

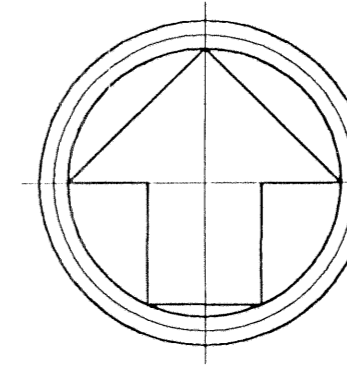
ANTHONY GROVES P.U.D.

# ANTHONY GROVES PHASE 1

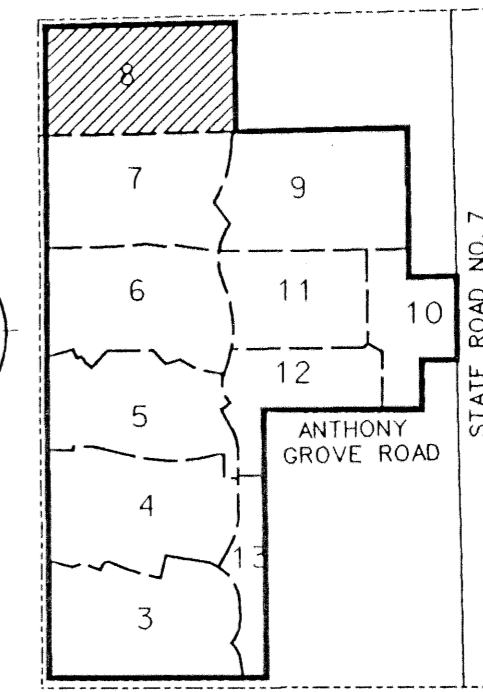
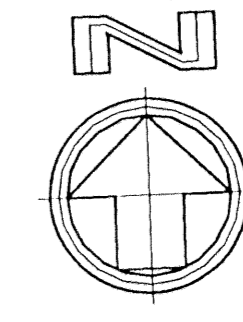
A PORTION OF SECTION 1, TOWNSHIP 44 SOUTH, RANGE 41 EAST,  
VILLAGE OF ROYAL PALM BEACH, PALM BEACH COUNTY, FLORIDA

### LEGEND:

- SET PERMANENT REFERENCE MONUMENT (P.R.M.) • LB2936 UNLESS OTHERWISE NOTED
- PERMANENT CONTROL POINT (P.C.P.)
- ▲ ZERO LOT SIDE
- CENTERLINE
- ▲ ARC LENGTH
- DELTA (CENTRAL ANGLE)
- D.E. DRAINAGE EASEMENT
- L.A.E. LIMITED ACCESS EASEMENT
- L.M.A.E. LAKE MAINTENANCE ACCESS EASEMENT
- L.M.E. LAKE MAINTENANCE EASEMENT
- L.S.E. LIFT STATION EASEMENT
- L.W.D.D. LAKE WORTH DRAINAGE DISTRICT
- N.R. NON-RADIAL
- O.R.B. OFFICIAL RECORDS BOOK
- P.G. PAGE
- P.B. PLAT BOOK
- P.B.C.R. PALM BEACH COUNTY RECORDS
- P.O.B. POINT OF BEGINNING
- P.O.C. POINT OF COMMENCEMENT
- P.U.D. PLANNED UNIT DEVELOPMENT
- R. RADIUS
- R/W. RIGHT-OF-WAY
- SF. SQUARE FEET
- U.E. UTILITY EASEMENT
- CH. CHORD
- C.B. CHORD BEARING
- W.E. WATER EASEMENT
- S.E. SEWER EASEMENT



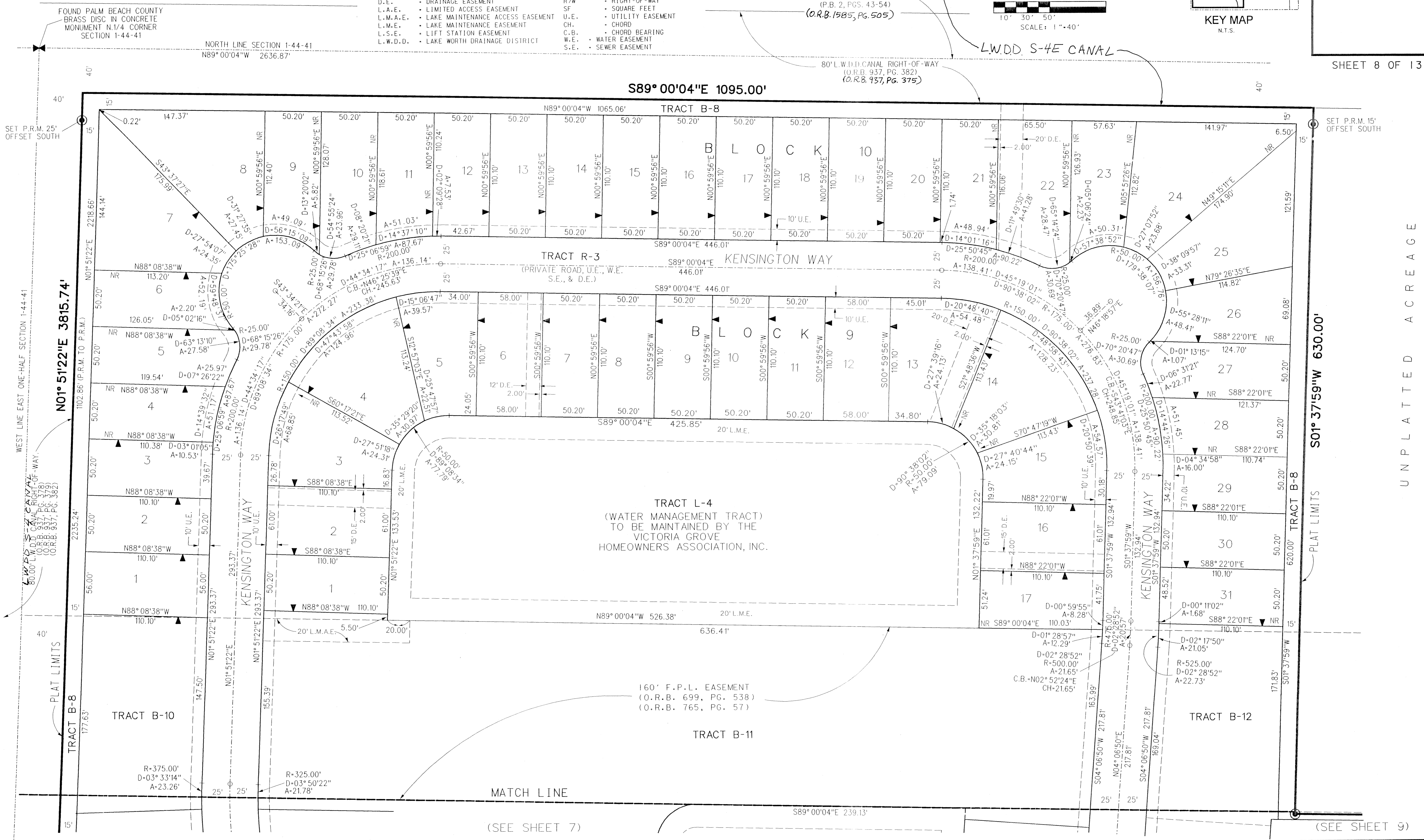
0 20' 40' 100'  
10' 30' 50'  
SCALE: 1"=40'



KEY MAP  
N.T.S.

47

SHEET 8 OF 13



UNPLATTED ACREAGE

FILE: I:\991010\cadd\w\10pp8.dgn  
DATE: 17-Sep-01 13:37

(SEE SHEET 7)

(SEE SHEET 9)