

CARLSON/BLACK PLAT

A PORTION OF THE S.W. 1/4 OF THE SECTION 13, TOWNSHIP 46 SOUTH, RANGE 42 EAST
CITY OF DELRAY BEACH, PALM BEACH COUNTY, FLORIDA
OCTOBER, 2001

59

STATE OF FLORIDA
COUNTY OF PALM BEACH

THIS PLAT WAS FILED FOR
RECORD AT _____

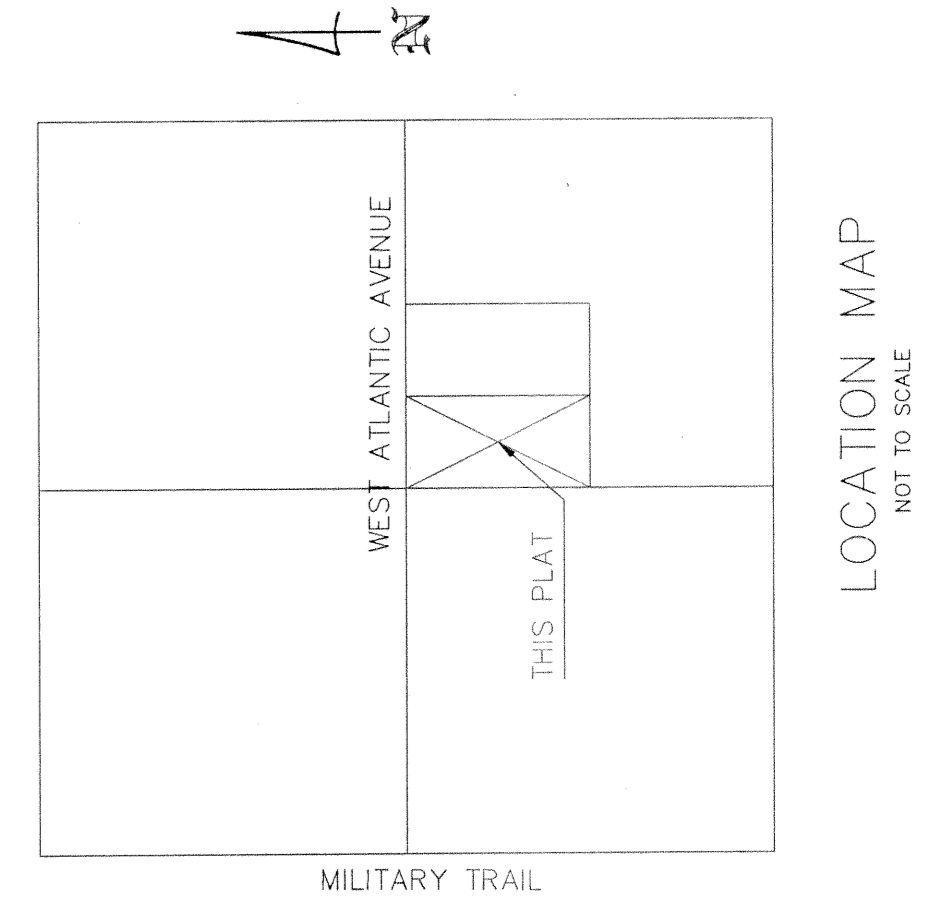
THIS _____ DAY OF _____
AD. 2001 AND DULY RECORDED
IN PLAT BOOK _____ ON PAGES
_____ AND _____

DOROTHY H. WILKEN, CLERK
BY: _____ D.C.

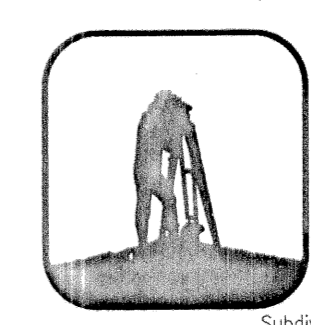
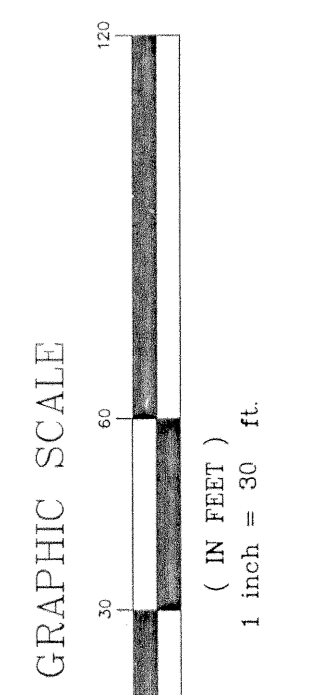
SHEET 2 OF 2

SURVEYORS' NOTES:

1. BEARINGS SHOWN HEREON ARE BASED ON THE WEST LINE OF SECTION 13, BEING N.00°42'24"E.
2. □ DENOTES A PERMANENT REFERENCE MONUMENT (P.R.M.) L.B. 2187
3. ● DENOTES A NAIL & DISK PERMANENT CONTROL POINT (P.C.P.) L.B. 2187
4. LINES WHICH INTERSECT CURVES ARE NON-RADIAL UNLESS OTHERWISE NOTED.
5. ALL RECORDING INFORMATION SHOWN ON THIS PLAT REFER TO THE PUBLIC RECORDS OF PALM BEACH COUNTY, FLORIDA.



- ABBREVIATIONS:**
- L.B. LICENSE BUSINESS
 - O.R. BOOK OFFICIAL RECORD BOOK
 - P.C.P. ● PERMANENT CONTROL POINT #LB 2187
 - P.R.M. □ PERMANENT REFERENCE MONUMENT #LB 2187
 - U.E. UTILITY EASEMENT
 - W.S.E. WATER & SEWER EASEMENT
 - W.L.E. WATERLINE EASEMENT
 - C/L CENTERLINE



DAVIS ASSOCIATES, INC.
LB #0002187

Consulting Civil and Environmental Engineers • Land Surveyors • Land Development Consultants • Planners
201 S.E. 15TH TERRACE - SUITE 103A - DEERFIELD BEACH, FL 33441
Phone: (954) 698-9101 fax: (954) 698-9722

Subdivisions & Condominiums • Land & Site Planning • Sanitary Sewer Systems • Water System • Drainage Design • Paving Design
Lot Surveys • Mortgage Surveys • Acreage Surveys • Topographic Surveys • Record Plats • Condominium Plats • Construction Layout

CADD FILE: C:\SDSK\PROJ\CARLSON\CARLSON