

"LAKE WORTH SPEEDWAY PLAT"

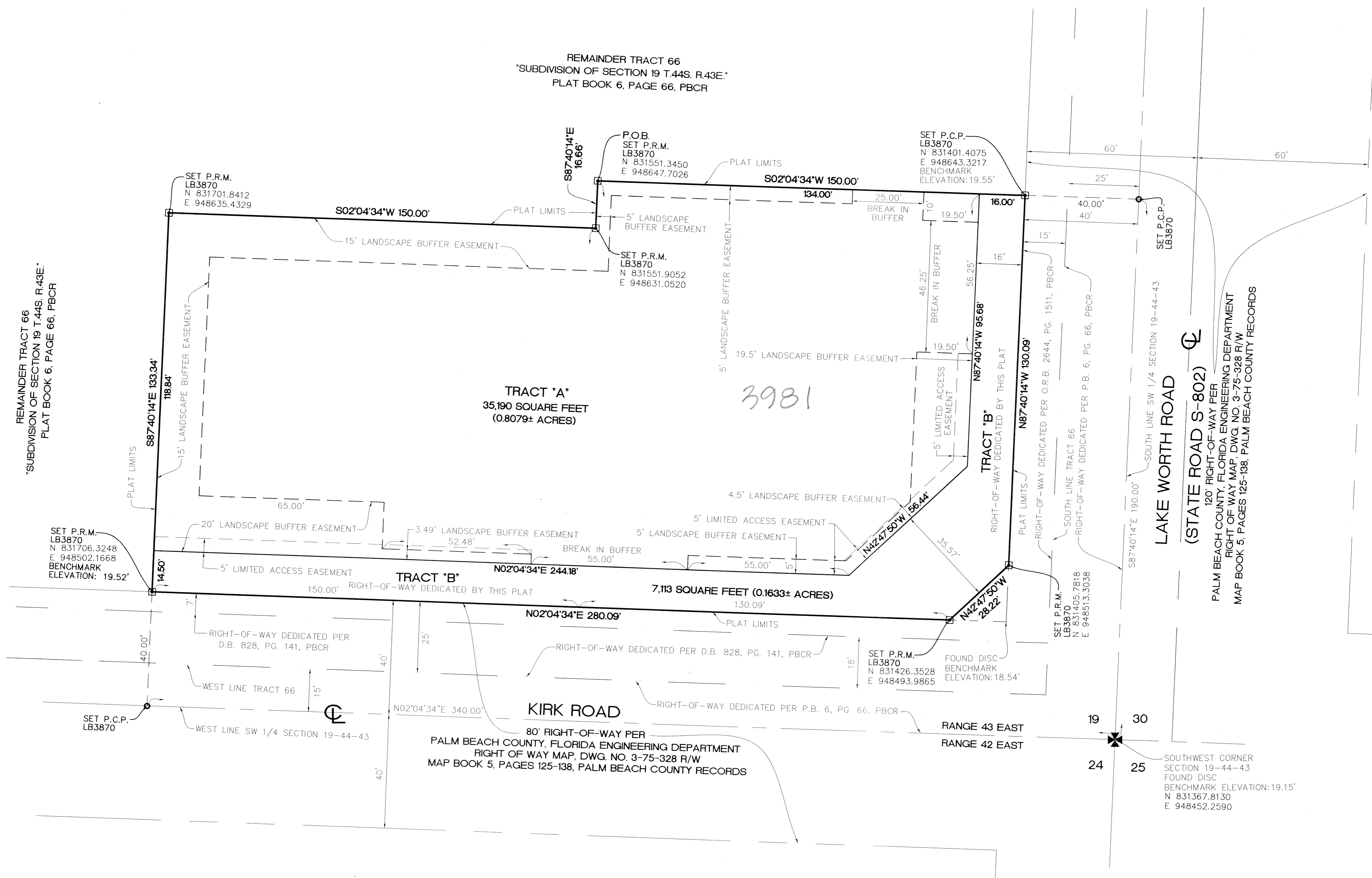
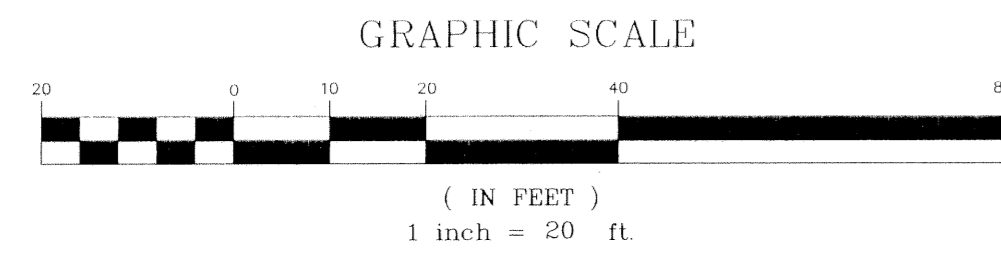
A REPLAT OF A PORTION OF TRACT 66, "SUBDIVISION OF SECTION 19, T. 44 S., R. 43 E."
PLAT BOOK 6, PAGE 66, PALM BEACH COUNTY RECORDS
SECTION 19, TOWNSHIP 44 SOUTH, RANGE 43 EAST
PALM BEACH COUNTY-FLORIDA

PREPARED BY
PULICE LAND SURVEYORS, INC.

CERTIFICATE OF AUTHORIZATION LB3870
5381 NOB HILL ROAD
SUNRISE, FLORIDA 33351
(954) 572-1777
FAX (954) 572-1778
JOHN F. PULICE
REGISTERED SURVEYOR AND MAPPER LS2691
JANUARY 2001

STATE OF FLORIDA
COUNTY OF PALM BEACH
THIS PLAT WAS FILED FOR RECORD AT _____ M.,
THIS _____ DAY OF _____, AND
DULY RECORDED IN PLAT BOOK NUMBER _____
AT PAGE _____
DOROTHY H. WILKEN
CLERK OF THE CIRCUIT COURT

BY: _____
DEPUTY CLERK



SUBDIVISION LAKE WORTH SPEEDWAY PLAT
PAGE 61
FLOOD MAP # 17575
ZONING CG
ZIP CODE 33461
SE 75-104(A)
TAZ 522
PUB NAME

LAKE WORTH ROAD
(STATE ROAD S-802)
120' RIGHT-OF-WAY PER
PALM BEACH COUNTY, FLORIDA ENGINEERING DEPARTMENT
RIGHT OF WAY MAP, DWG. NO. 3-75-328 R/W
MAP BOOK 5, PAGES 125-138, PALM BEACH COUNTY RECORDS

KIRK ROAD
80' RIGHT-OF-WAY PER
PALM BEACH COUNTY, FLORIDA ENGINEERING DEPARTMENT
RIGHT OF WAY MAP, DWG. NO. 3-75-328 R/W
MAP BOOK 5, PAGES 125-138, PALM BEACH COUNTY RECORDS

SOUTHWEST CORNER
SECTION 19-44-43
FOUND DISC
BENCHMARK ELEVATION: 19.15'
N 831367.8130
E 948452.2590