

LANTERN KEY, A P.U.D.

A PORTION OF SECTION 1, TOWNSHIP 45 SOUTH, RANGE 42 EAST PALM BEACH COUNTY, FLORIDA

PREPARED BY:
KATHLEEN L. HALL LAND SURVEYING, INC.
1101 HOLLAND DRIVE
SUITE 32
BOCA RATON, FLORIDA 33487
TEL. (561) 443-0426
NOVEMBER 2000

ABBREVIATION TABULATION

PT	PARKING TRACT
RAT	RESIDENTIAL ACCESS TRACT
WMT	WATER MANAGEMENT TRACT
OST	OPEN SPACE TRACT
PST	PRIVATE STREET TRACT
LBT	LANDSCAPE BUFFER TRACT
RWT	RIGHT-OF-WAY TRACT
RT	RECREATION TRACT
LMAE	LAKE MAINTENANCE ACCESS EASEMENT
LME	LAKE MAINTENANCE EASEMENT
DE	DRAINAGE EASEMENT
LBE	LANDSCAPE BUFFER EASEMENT
UE	UTILITY EASEMENT
O&ME	OVERHANG/MAINTENANCE EASEMENT
R/W	RIGHT-OF-WAY
D.B.	DEED BOOK
O.R.B.	OFFICIAL RECORDS BOOK
LSE	LIFT STATION EASEMENT
PRM	PERMANENT REFERENCE MONUMENT #4103
PCP	PERMANENT CONTROL POINT #4103
∇	ZERO LOT LINE SIDE
P.B.	PLAT BOOK
L.W.D.D.	LAKE WORTH DRAINAGE DISTRICT
L.A.E.	LIMITED ACCESS EASEMENT
[C8] [L32]	INDICATES CURVE OR LINE NUMBER
C.B.	CHORD BEARING
CHD.	CHORD DISTANCE
FD.	FOUND
CALC.	CALCULATED
MEAS.	MEASURED
N	NORTHING
E	EASTING
P.B. COUNTY	PALM BEACH COUNTY
N.R.	NON-RADIAL
L.E.	LANDSCAPE EASEMENT
R.B.	RADIAL BEARING

COUNTY OF PALM BEACH
STATE OF FLORIDA
THIS PLAT WAS FILED FOR
RECORD AT _____
THIS _____ DAY OF _____
2000, AND
DULY RECORDED IN
PLAT BOOK _____
PAGES _____ THROUGH _____

DOROTHY H. WILKIN
Clerk of Circuit Court

BY: _____

CURVE TABULATION

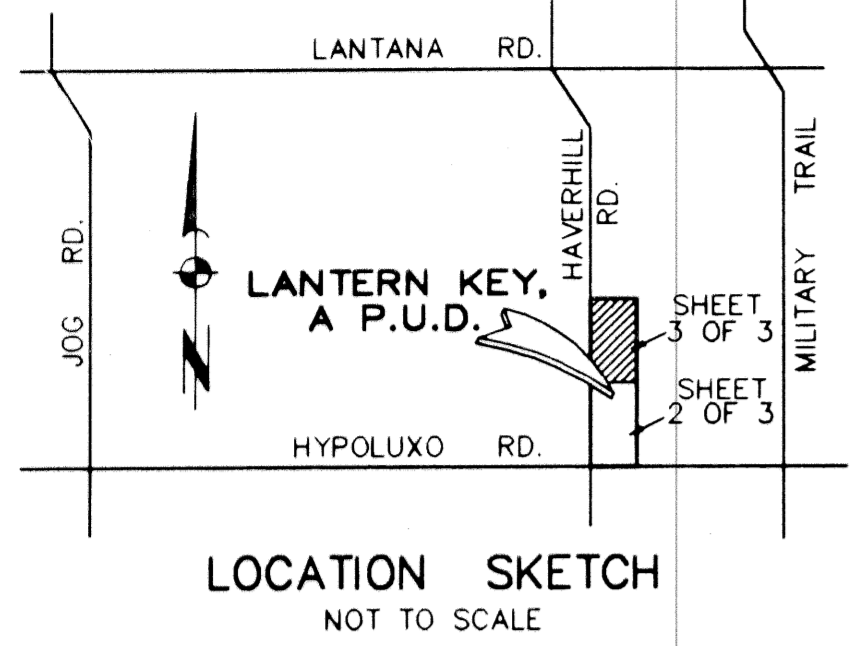
CURVE NUMBER	RADIUS	DELTA	ARC LENGTH	CHORD BEARING	CHORD
36	525.00	22°51'41"	209.48'	S11°46'32"E	208.09'
37	525.00	07°08'57"	65.51'	S26°46'51"E	65.47'
38	525.00	00°02'04"	0.32'	S30°22'21"E	0.32'
39	525.00	30°02'42"	275.30'	S15°22'02"E	272.16'
40	200.00	15°57'04"	55.68'	S55°31'18"W	55.50'
41	200.00	26°11'43"	91.44'	S76°35'42"W	90.64'
42	200.00	42°08'48"	147.12'	S68°37'10"W	143.82'
55	507.00	09°17'31"	82.22'	S04°59'26"E	82.13'
56	507.00	06°54'27"	61.12'	S13°05'25"E	61.09'
57	480.80	04°26'54"	37.33'	S45°19'19"W	37.32'
58	480.80	03°53'53"	32.71'	S45°35'49"W	32.70'

LINE TABLE

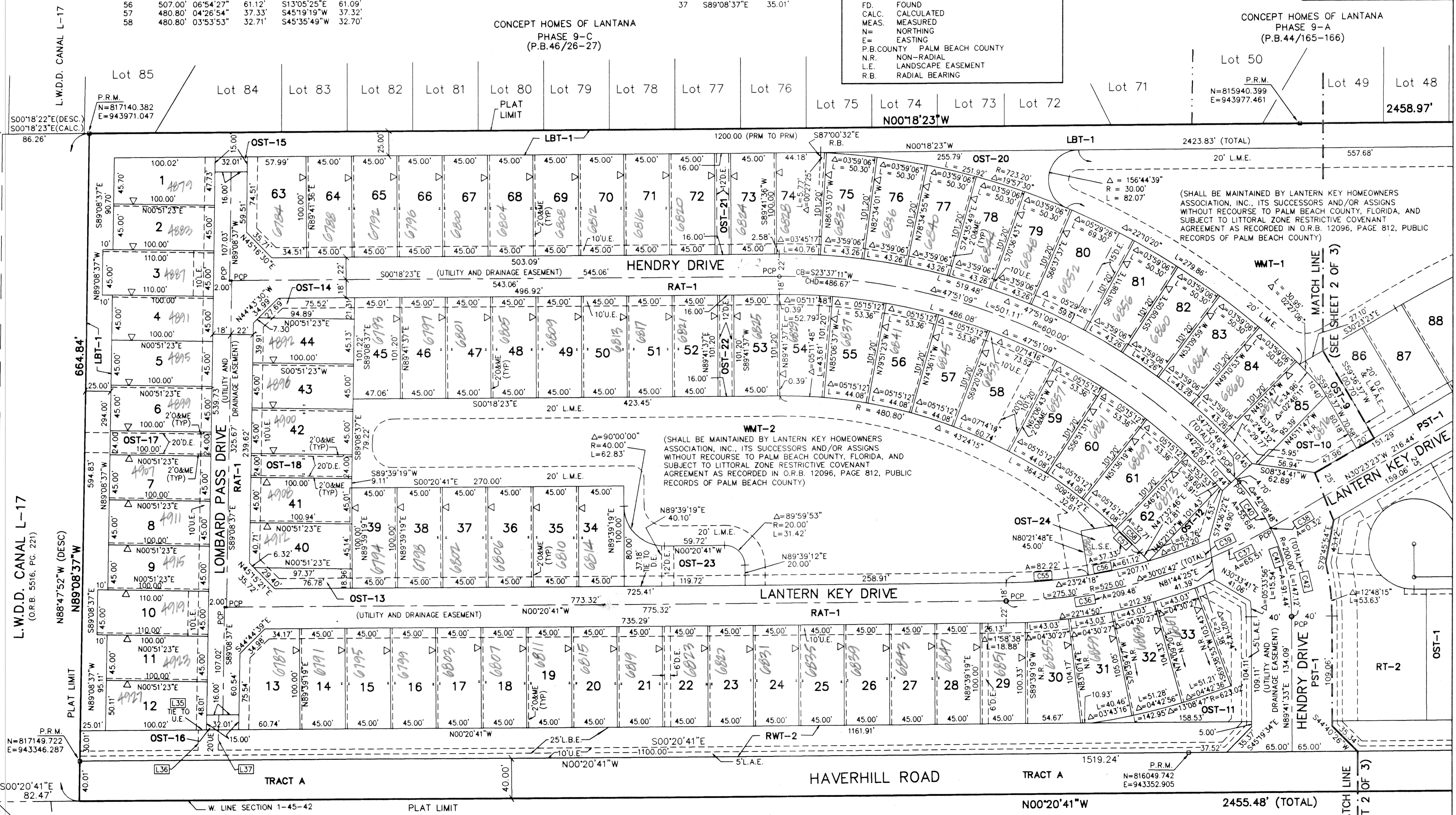
LINE NUMBER	BEARING	DISTANCE
35	N00°20'41"W	8.00'
36	N89°08'37"W	20.00'
37	S89°08'37"E	35.01'

CONCEPT HOMES OF LANTANA
PHASE 9-C
(P.B.46/26-27)

CONCEPT HOMES OF LANTANA
PHASE 9-A
(P.B.44/165-166)



N.E. CORNER
S.1303' OF W1/2,
NW1/4, SW1/4
SECTION 1



(SHALL BE MAINTAINED BY LANTERN KEY HOMEOWNERS ASSOCIATION, INC., ITS SUCCESSORS AND/OR ASSIGNS WITHOUT RECOURSE TO PALM BEACH COUNTY, FLORIDA, AND SUBJECT TO LITTORAL ZONE RESTRICTIVE COVENANT AGREEMENT AS RECORDED IN O.R.B. 12096, PAGE 812, PUBLIC RECORDS OF PALM BEACH COUNTY)

(SHALL BE MAINTAINED BY LANTERN KEY HOMEOWNERS ASSOCIATION, INC., ITS SUCCESSORS AND/OR ASSIGNS WITHOUT RECOURSE TO PALM BEACH COUNTY, FLORIDA, AND SUBJECT TO LITTORAL ZONE RESTRICTIVE COVENANT AGREEMENT AS RECORDED IN O.R.B. 12096, PAGE 812, PUBLIC RECORDS OF PALM BEACH COUNTY)

CONCEPT HOMES OF LANTANA PLAT NO. 3
(P.B.39/123)

CONCEPT HOMES OF LANTANA PLAT NO. 3
(P.B.39/123)

W1/4 CORNER SECTION 1
(FD.P.B. COUNTY BRASS DISK)
N=817274.480
E=943305.527

P.O.B. (EXCEPTION)
N.W. CORNER S.1303'
W1/2, NW1/4, SW1/4
SECTION 1

UNPLATTED

MATCH LINE (SEE SHEET 2 OF 3)

PAGE 70
FLOOD MAP # 175B
ZONING PLUD
ZONING # 34
TAZ 453
PUD NAME LANTERN KEY