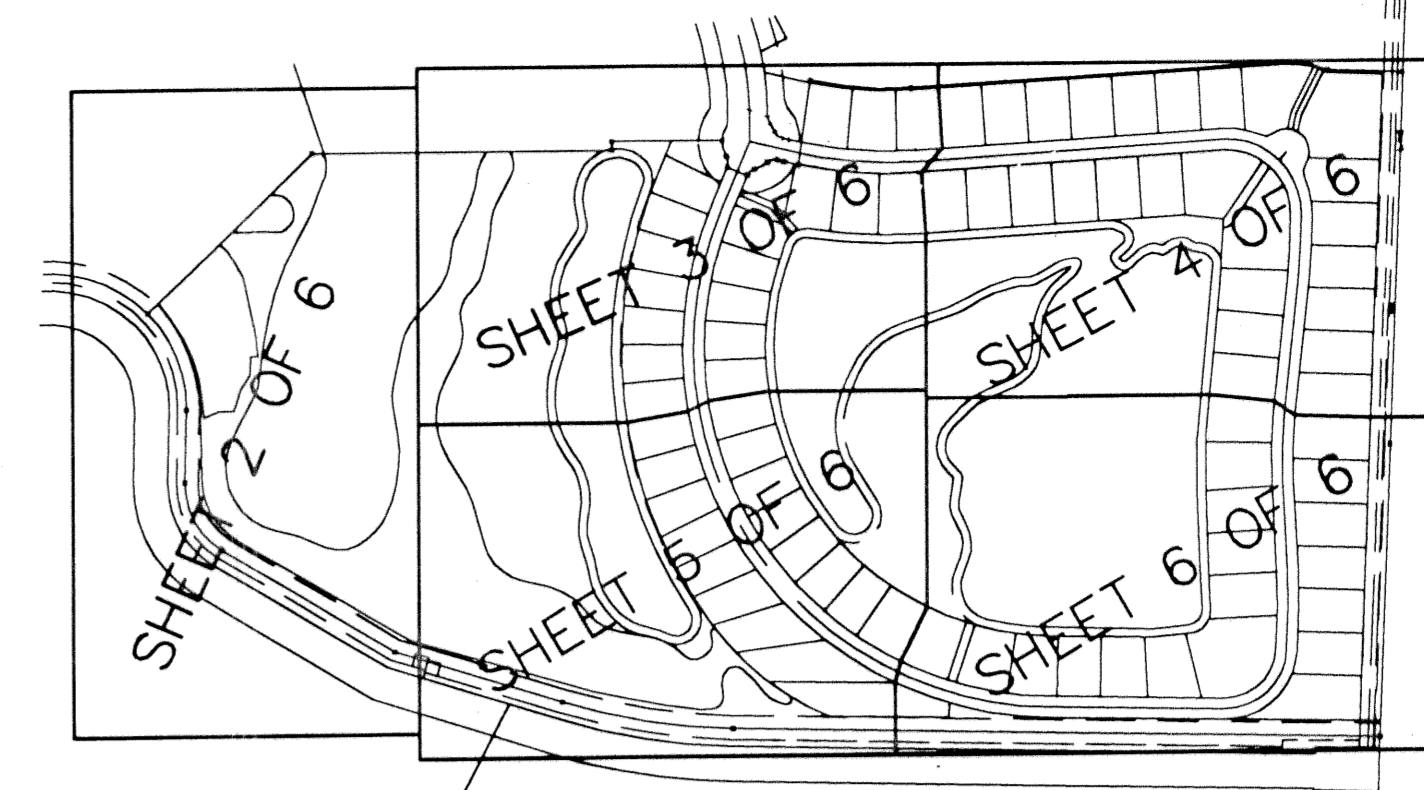
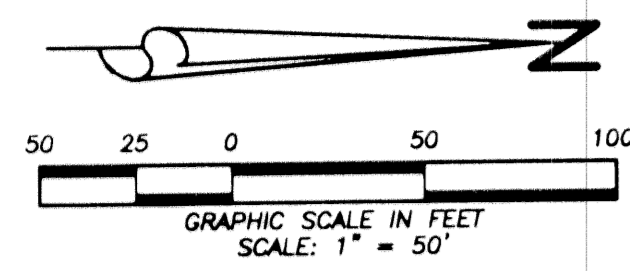


FRENCHMAN'S RESERVE PCD - PLAT F

BEING A REPLAT OF TRACT F FRENCHMAN'S RESERVE PCD - PLAT ONE
AS RECORDED IN PLAT BOOK 92, PAGES 11-20
IN PALM BEACH COUNTY, FLORIDA

BEING A PARCEL OF LAND LYING IN SECTION 31,
TOWNSHIP 41 SOUTH, RANGE 43 EAST, CITY OF PALM BEACH
GARDENS, PALM BEACH COUNTY, FLORIDA.

JANUARY, 2002 SHEET 2 OF 6



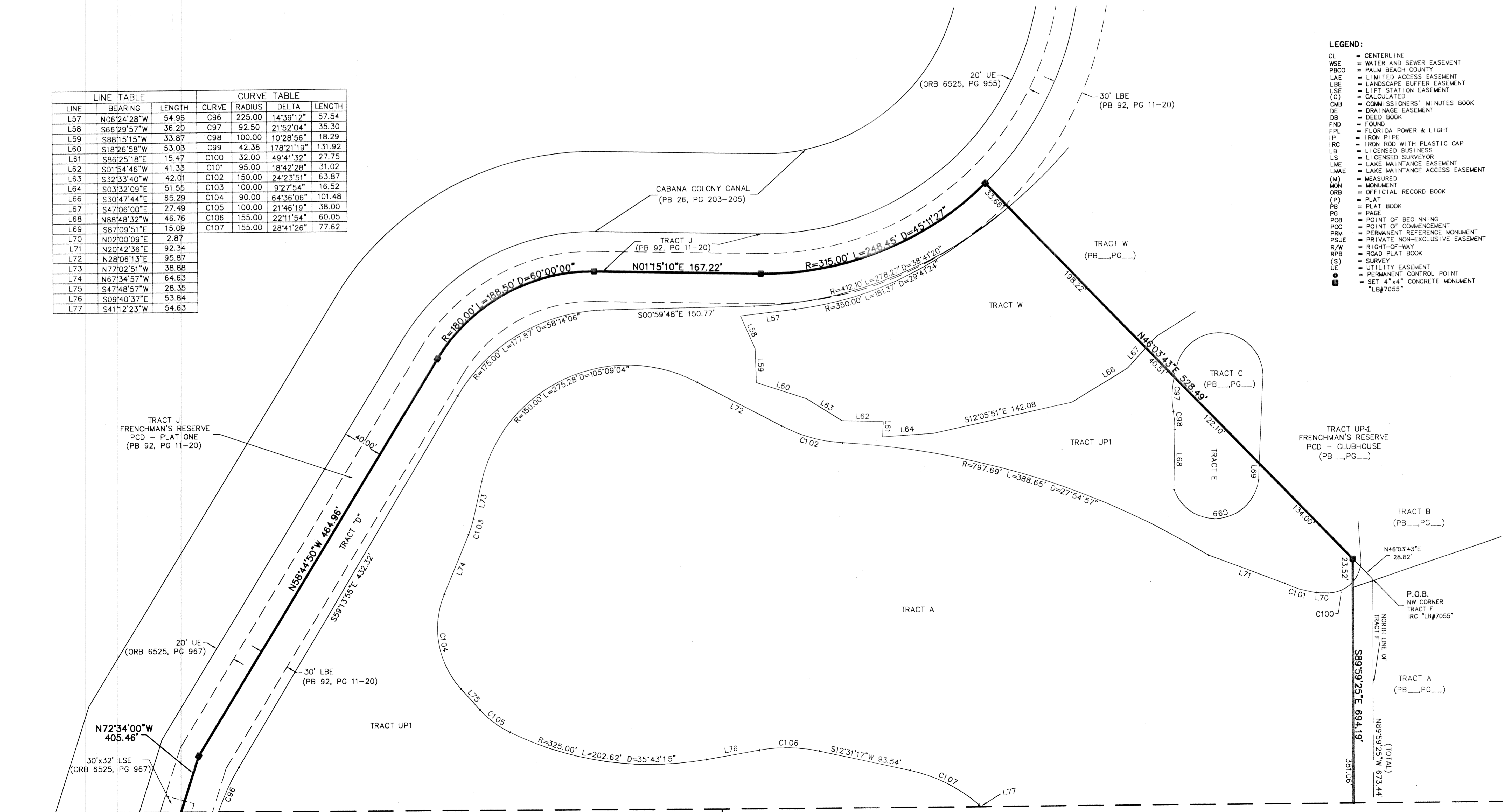
STATE OF FLORIDA
COUNTY OF PALM BEACH
THIS PLAT WAS FILED FOR
RECORD AT _____ M.
THIS _____ DAY OF _____
A.D. 2001 AND DULY RECORDED
IN PLAT BOOK _____ ON
PAGES _____ AND _____

DOROTHY H. WILKEN
CLERK CIRCUIT COURT

BY: _____
DEPUTY CLERK

LINE TABLE			CURVE TABLE			
LINE	BEARING	LENGTH	CURVE	RADIUS	DELTA	LENGTH
L57	N06°24'28"W	54.96	C96	225.00	14°39'12"	57.54
L58	S66°29'57"W	36.20	C97	92.50	21°52'04"	35.30
L59	S88°15'15"W	33.87	C98	100.00	10°28'56"	18.29
L60	S18°26'58"W	53.03	C99	42.38	178°21'19"	131.92
L61	S86°25'18"E	15.47	C100	32.00	49°41'32"	27.75
L62	S01°54'46"W	41.33	C101	95.00	18°42'28"	31.02
L63	S32°33'40"W	42.01	C102	150.00	24°23'51"	63.87
L64	S03°32'09"E	51.55	C103	100.00	9°27'54"	16.52
L66	S30°47'44"E	65.29	C104	90.00	64°36'06"	101.48
L67	S47°06'00"E	27.49	C105	100.00	21°46'19"	38.00
L68	N88°48'32"W	46.76	C106	155.00	22°11'54"	60.05
L69	S87°09'51"E	15.09	C107	155.00	28°41'26"	77.62
L70	N02°00'09"E	2.87				
L71	N20°42'36"E	92.34				
L72	N28°06'13"E	95.87				
L73	N77°02'51"W	38.88				
L74	N67°34'57"W	64.63				
L75	S47°48'57"W	28.35				
L76	S09°40'37"E	53.84				
L77	S41°12'23"W	54.63				

- LEGEND:**
- CL = CENTERLINE
 - WSE = WATER AND SEWER EASEMENT
 - PBCO = PALM BEACH COUNTY
 - LAE = LIMITED ACCESS EASEMENT
 - LBE = LANDSCAPE BUFFER EASEMENT
 - LSE = LIFT STATION EASEMENT
 - (C) = CALCULATED
 - CMB = COMMISSIONERS' MINUTES BOOK
 - DE = DRAINAGE EASEMENT
 - DB = DEED BOOK
 - FND = FOUND
 - FPL = FLORIDA POWER & LIGHT
 - IP = IRON PIPE
 - IRC = IRON ROD WITH PLASTIC CAP
 - LB = LICENSED BUSINESS
 - LS = LICENSED SURVEYOR
 - LME = LAKE MAINTENANCE EASEMENT
 - LMAE = LAKE MAINTENANCE ACCESS EASEMENT
 - (M) = MEASURED
 - MON = MONUMENT
 - ORB = OFFICIAL RECORD BOOK
 - (P) = PLAT
 - PB = PLAT BOOK
 - PG = PAGE
 - POB = POINT OF BEGINNING
 - POC = POINT OF COMMENCEMENT
 - PRM = PERMANENT REFERENCE MONUMENT
 - PSUE = PRIVATE NON-EXCLUSIVE EASEMENT
 - R/W = RIGHT-OF-WAY
 - R/PB = ROAD PLAT BOOK
 - (S) = SURVEY
 - UE = UTILITY EASEMENT
 - PCP = PERMANENT CONTROL POINT
 - SET 4"x4" CONCRETE MONUMENT "LB#7055"



MATCHLINE SHEET 5 OF 6

MATCHLINE SHEET 3 OF 6

Wantman Group, Inc.
Engineering ♦ Surveying ♦ Mapping
901 NORTHPOINT PARKWAY, SUITE 204
WEST PALM BEACH, FL 33407
(561) 687-2220 phone (561) 687-1110 fax
CERT No. 6091 - LB No. 7055

CAD	K:\TOLLBROS\FRENCHMAN\DWG\218PLATF		
REF	K:\TOLLBROS\FRENCHMAN\DWG\218M001		
FLD	FB.	PG.	JOB 01-218F
OFF	AJP/MRJ		DATE 11/14/01
CKD	RBP	SHEET 2 OF 6	DWG