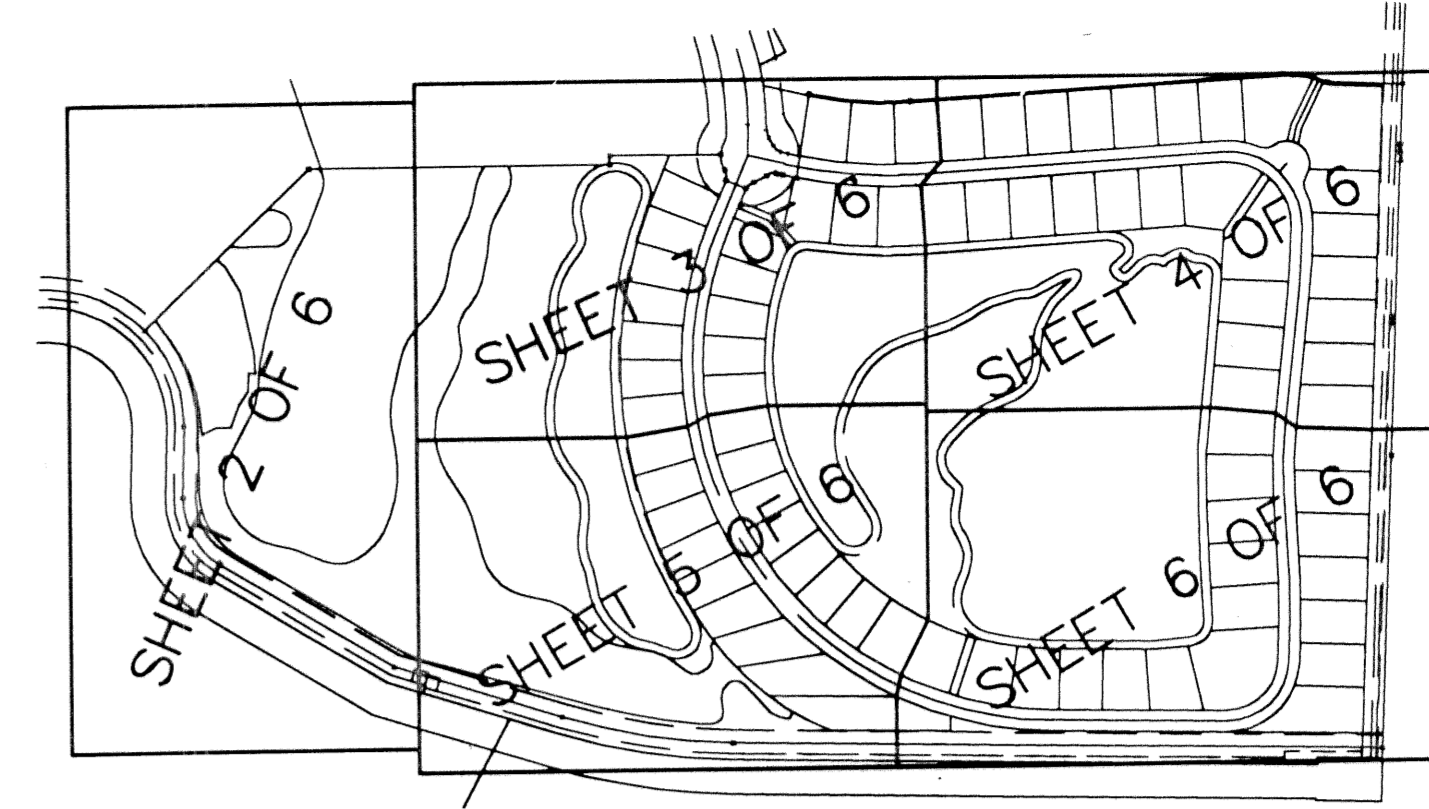
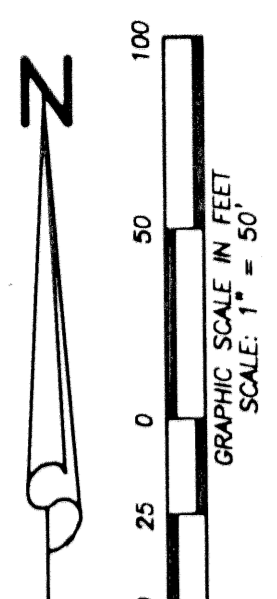


FRENCHMAN'S RESERVE PCD - PLAT F

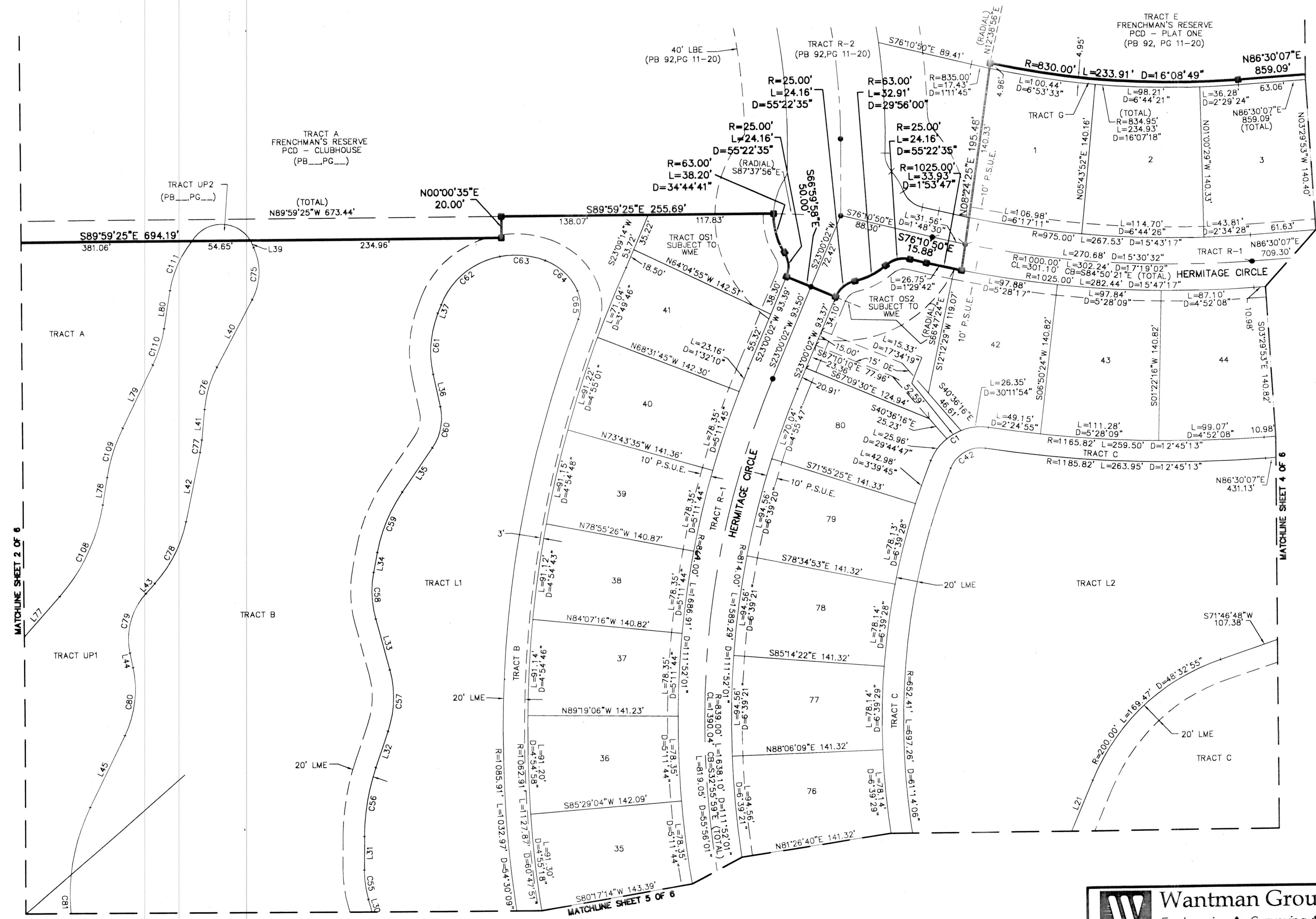
BEING A REPLAT OF TRACT F FRENCHMAN'S RESERVE PCD - PLAT ONE
AS RECORDED IN PLAT BOOK 92, PAGES 11-20
IN PALM BEACH COUNTY, FLORIDA

BEING A PARCEL OF LAND LYING IN SECTION 31,
TOWNSHIP 41 SOUTH, RANGE 43 EAST, CITY OF PALM BEACH
GARDENS, PALM BEACH COUNTY, FLORIDA.

JANUARY, 2002 SHEET 3 OF 6



STATE OF FLORIDA
COUNTY OF PALM BEACH
THIS PLAT WAS FILED FOR
RECORD AT _____ M.
THIS _____ DAY OF _____
A.D. 2001 AND DULY RECORDED
IN PLAT BOOK _____ ON
PAGES _____ AND _____
DOROTHY H. WILKEN
CLERK CIRCUIT COURT
BY: _____
DEPUTY CLERK



LINE TABLE			CURVE TABLE			
LINE	BEARING	LENGTH	CURVE	RADIUS	DELTA	LENGTH
L21	S23°13'53"W	50.91	C1	50.00	77°31'00"	67.65
L30	N15°41'42"W	15.29	C42	30.00	77°31'00"	40.59
L31	N00°19'24"E	31.78	C55	100.00	16°01'06"	27.96
L32	N18°58'55"E	35.16	C56	200.00	18°39'30"	65.13
L33	N14°44'05"W	49.68	C57	100.00	33°43'00"	58.85
L34	N10°53'02"E	19.01	C58	100.00	25°37'07"	44.71
L35	N34°33'43"E	50.53	C59	150.00	23°40'41"	61.99
L36	N11°59'24"W	30.98	C60	50.00	46°33'07"	40.62
L37	N21°58'59"E	8.39	C61	100.00	33°38'23"	58.71
L39	S23°56'13"E	7.28	C62	73.00	58°23'58"	74.41
L40	N27°54'07"E	71.88	C63	79.80	31°14'11"	43.51
L41	N05°18'32"E	29.14	C64	54.00	45°39'48"	43.04
L42	N11°56'19"E	66.95	C65	35.00	44°18'40"	27.07
L43	N41°59'47"E	12.81	C75	56.40	51°50'19"	51.03
L44	N11°29'02"W	13.91	C76	105.00	22°35'35"	41.40
L45	N26°12'44"E	74.10	C77	105.00	63°74'37"	12.15
L77	N41°12'43"E	54.63	C78	125.00	30°03'28"	65.58
L78	N09°35'33"E	26.20	C79	65.00	53°28'49"	60.67
L79	N25°47'19"E	65.76	C80	100.00	37°41'46"	65.79
L80	N09°15'50"E	36.21	C81	185.00	57°44'17"	186.43
C10B		175.00		313°7'10"		96.58
C109		175.00		161°1'46"		49.47
C110		125.00		163°1'29"		36.05
C111		100.00		29°42'01"		51.84

- LEGEND:**
- CL = CENTER LINE
 - WSE = WATER AND SEWER EASEMENT
 - PBCO = PALM BEACH COUNTY
 - LAE = LIMITED ACCESS EASEMENT
 - LBE = LANDSCAPE BUFFER EASEMENT
 - LSE = LIFT STATION EASEMENT
 - (C) = CALCULATED
 - CMB = COMMISSIONERS' MINUTES BOOK
 - DE = DRAINAGE EASEMENT
 - DB = DEED BOOK
 - FND = FOUND
 - FPL = FLORIDA POWER & LIGHT
 - IP = IRON PIPE
 - IRC = IRON ROD WITH PLASTIC CAP
 - LS = LICENSED BUSINESS
 - LB = LICENSED SURVEYOR
 - LME = LAKE MAINTENANCE EASEMENT
 - LMAE = LAKE MAINTENANCE ACCESS EASEMENT
 - (M) = MEASURED
 - MON = MONUMENT
 - ORB = OFFICIAL RECORD BOOK
 - (P) = PLAT
 - PB = PLAT BOOK
 - PG = PAGE
 - POB = POINT OF BEGINNING
 - POC = POINT OF COMMENCEMENT
 - PRM = PERMANENT REFERENCE MONUMENT
 - PSUE = PRIVATE NON-EXCLUSIVE EASEMENT
 - R/W = RIGHT-OF-WAY
 - RPB = ROAD PLAT BOOK
 - (S) = SURVEY
 - UE = UTILITY EASEMENT
 - = PERMANENT CONTROL POINT
 - = SET 4"x4" CONCRETE MONUMENT "LB77055"

Wantman Group, Inc.
Engineering ♦ Surveying ♦ Mapping
901 NORTHPOINT PARKWAY, SUITE 204
WEST PALM BEACH, FL 33407
(561) 687-2220 phone (561) 687-1110 fax
CERT No. 6091 - LB No. 7055

CAD	K:\TOLLBROS\FRENCHMAN\DWG\218PLATF		
REF	K:\TOLLBROS\FRENCHMAN\DWG\218MG01		
FLD	FB.	PG.	JOB 01-218F
OFF	AJP/MRJ		DATE 11/14/01
CKD	RBP	SHEET 3 OF 6	DWG