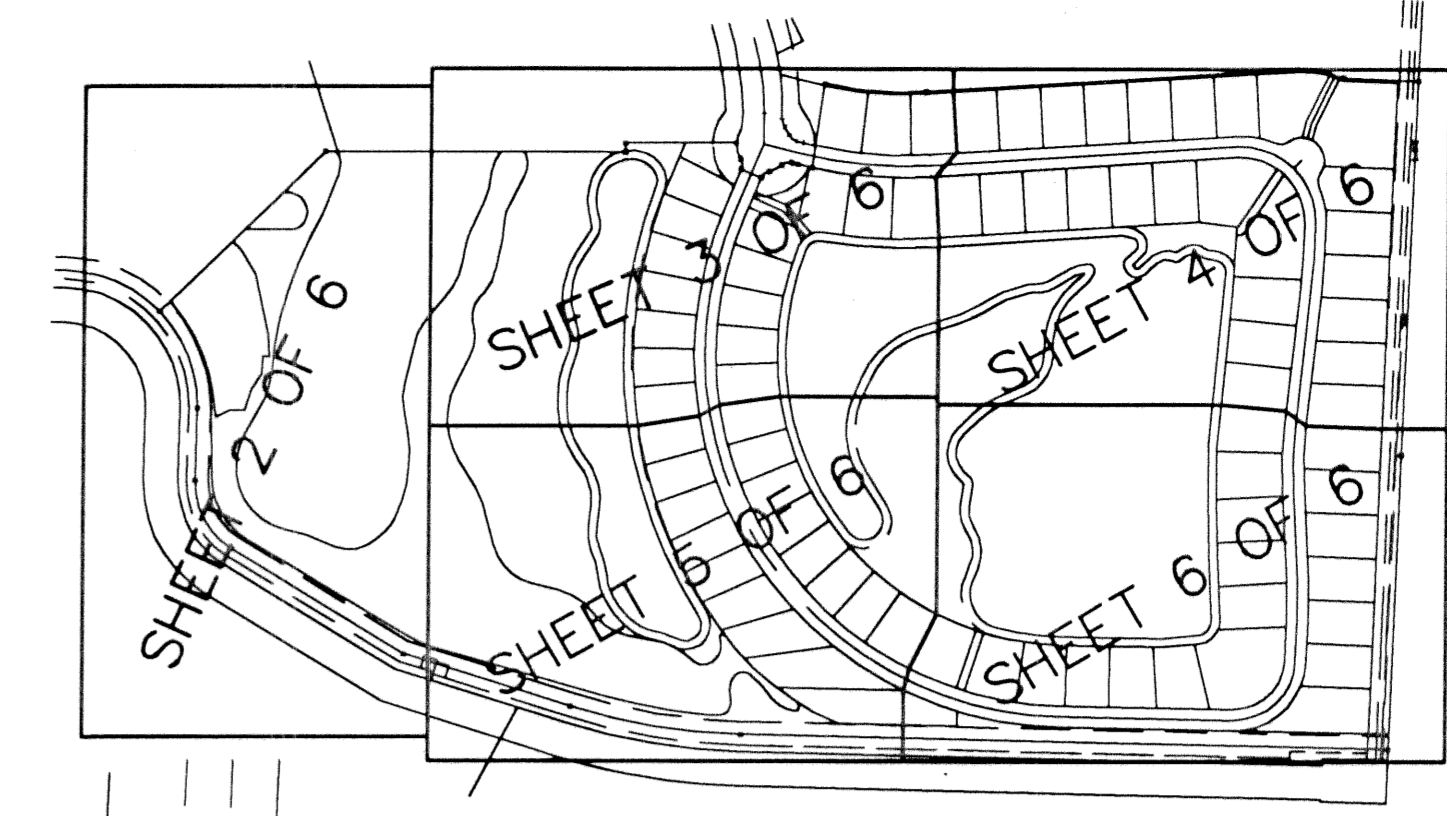
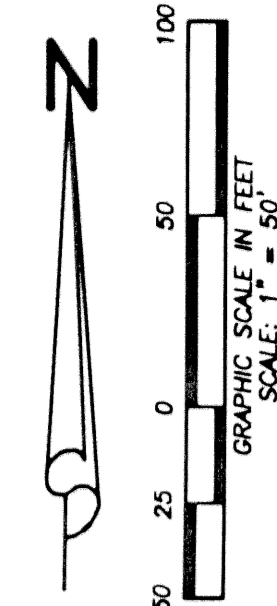


FRENCHMAN'S RESERVE PCD - PLAT F

BEING A REPLAT OF TRACT F FRENCHMAN'S RESERVE PCD - PLAT ONE
AS RECORDED IN PLAT BOOK 92, PAGES 11-20
IN PALM BEACH COUNTY, FLORIDA

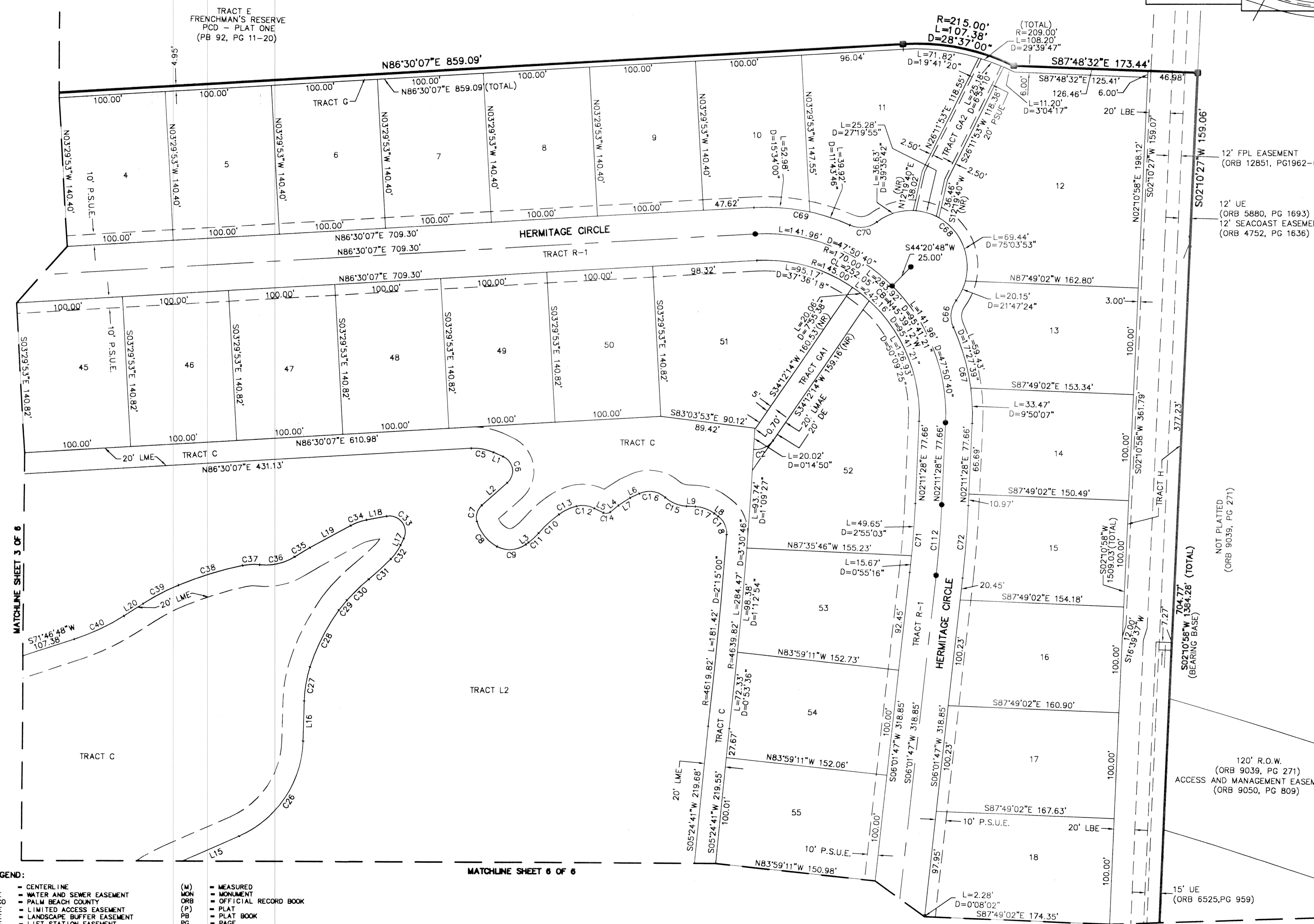
BEING A PARCEL OF LAND LYING IN SECTION 31,
TOWNSHIP 41 SOUTH, RANGE 43 EAST, CITY OF PALM BEACH
GARDENS, PALM BEACH COUNTY, FLORIDA.

JANUARY, 2002 SHEET 4 OF 6



STATE OF FLORIDA
COUNTY OF PALM BEACH
THIS PLAT WAS FILED FOR
RECORD AT _____ M.
THIS _____ DAY OF _____
A.D. 2001 AND DULY RECORDED
IN PLAT BOOK _____ ON
PAGES _____ AND _____
DOROTHY H. WILKEN
CLERK CIRCUIT COURT

BY: _____
DEPUTY CLERK



LINE TABLE			CURVE TABLE			
LINE	BEARING	LENGTH	CURVE	RADIUS	DELTA	LENGTH
L1	S66°07'14"E	9.96	C2	20.00	60°37'23"	21.16
L2	S48°14'32"W	31.85	C5	45.00	27°22'38"	21.50
L3	N52°49'54"E	3.20	C6	15.00	114°21'46"	29.94
L4	N50°29'28"E	9.97	C7	15.00	64°12'53"	16.81
L5	S63°35'01"E	9.43	C8	39.29	45°44'36"	31.37
L6	N64°34'15"E	9.36	C9	25.00	65°27'09"	28.56
L7	N56°51'26"E	13.16	C10	120.00	12°34'29"	26.34
L8	N53°06'16"W	4.58	C11	60.00	12°17'15"	12.87
L9	S87°50'33"E	8.31	C12	25.00	39°54'15"	17.41
L15	N66°12'13"E	68.72	C13	45.00	23°23'35"	18.37
L16	S01°07'47"W	38.23	C14	6.00	65°55'31"	6.90
L17	N25°14'01"E	6.88	C15	32.00	39°36'24"	22.12
L18	S79°13'29"W	19.05	C16	22.50	67°11'36"	26.39
L19	N60°52'20"E	43.59	C17	32.00	34°44'17"	19.40
L20	N56°57'01"E	21.34	C18	20.00	57°02'27"	19.91
L38	N12°19'40"E	35.73	C26	100.00	65°04'26"	113.58
C27		115.00			16°17'17"	32.69
C28		195.83			17°39'28"	60.35
C29		100.00			6°53'56"	12.04
C30		185.00			8°48'36"	28.45
C31		225.89			7°06'19"	28.01
C32		50.00			18°26'44"	16.10
C33		15.00			126°00'32"	32.99
C34		50.00			18°21'09"	16.02
C35		280.00			3°26'31"	16.82
C36		50.00			39°10'38"	34.19
C37		50.00			18°32'14"	16.18
C38		348.99			10°20'46"	63.02
C39		200.00			10°46'27"	37.61
C40		200.00			14°49'47"	51.77
C66		25.00			61°20'33"	26.77
C67		195.00			27°17'46"	92.90
C68		53.00			163°46'54"	151.50
C69		195.00			27°17'46"	92.90
C70		25.00			61°20'33"	26.77
C71		975.00			3°50'19"	65.32
C72		1025.00			3°50'19"	68.67

CURVE TABLE					
CURVE	RADIUS	DELTA	LENGTH	CHORD BEARING	CHORD DISTANCE
C12	1000.00	3°50'19"	67.00'	N04°06'38"E	66.98'

- LEGEND:**
- CL = CENTERLINE
 - WSE = WATER AND SEWER EASEMENT
 - PBCO = PALM BEACH COUNTY
 - LAE = LIMITED ACCESS EASEMENT
 - LBE = LANDSCAPE BUFFER EASEMENT
 - LSE = LEFT STATION EASEMENT
 - (C) = CALCULATED
 - COMB = COMMISSIONERS' MINUTES BOOK
 - DE = DRAINAGE EASEMENT
 - DB = DEED BOOK
 - FND = FOUND
 - FPL = FLORIDA POWER & LIGHT
 - IP = IRON PIPE
 - IRC = IRON ROD WITH PLASTIC CAP
 - LB = LICENSED BUSINESS
 - LME = LAKE MAINTENANCE EASEMENT
 - LMAE = LAKE MAINTENANCE ACCESS EASEMENT
 - LS = LICENSED SURVEYOR
 - (M) = MEASURED
 - MON = MONUMENT
 - ORB = OFFICIAL RECORD BOOK
 - (P) = PLAT
 - PLB = PLAT BOOK
 - PG = PAGE
 - POB = POINT OF BEGINNING
 - POC = POINT OF COMMENCEMENT
 - PRM = PERMANENT REFERENCE MONUMENT
 - PSUE = PRIVATE NON-EXCLUSIVE EASEMENT
 - R/W = RIGHT-OF-WAY
 - RPL = ROAD PLAT BOOK
 - (S) = SURVEY
 - UE = UTILITY EASEMENT
 - (*) = PERMANENT CONTROL POINT
 - (*) = SET 4"x4" CONCRETE MONUMENT
 - (*) = LB#7055

Wantman Group, Inc.
Engineering ♦ Surveying ♦ Mapping
901 NORTHPOINT PARKWAY, SUITE 204
WEST PALM BEACH, FL 33407
(561) 687-2220 phone (561) 687-1110 fax
CERT No. 6091 - LB No. 7055

CAD K:\TOLLBROS\FRENCHMAN\DWG\218PLATF			
REF K:\TOLLBROS\FRENCHMAN\DWG\218MG01			
FLD	FB.	PG.	JOB 01-218F
OFF	AJP/MRJ		DATE 11/14/01
CKD	RBP	SHEET 4 OF 6	DWG