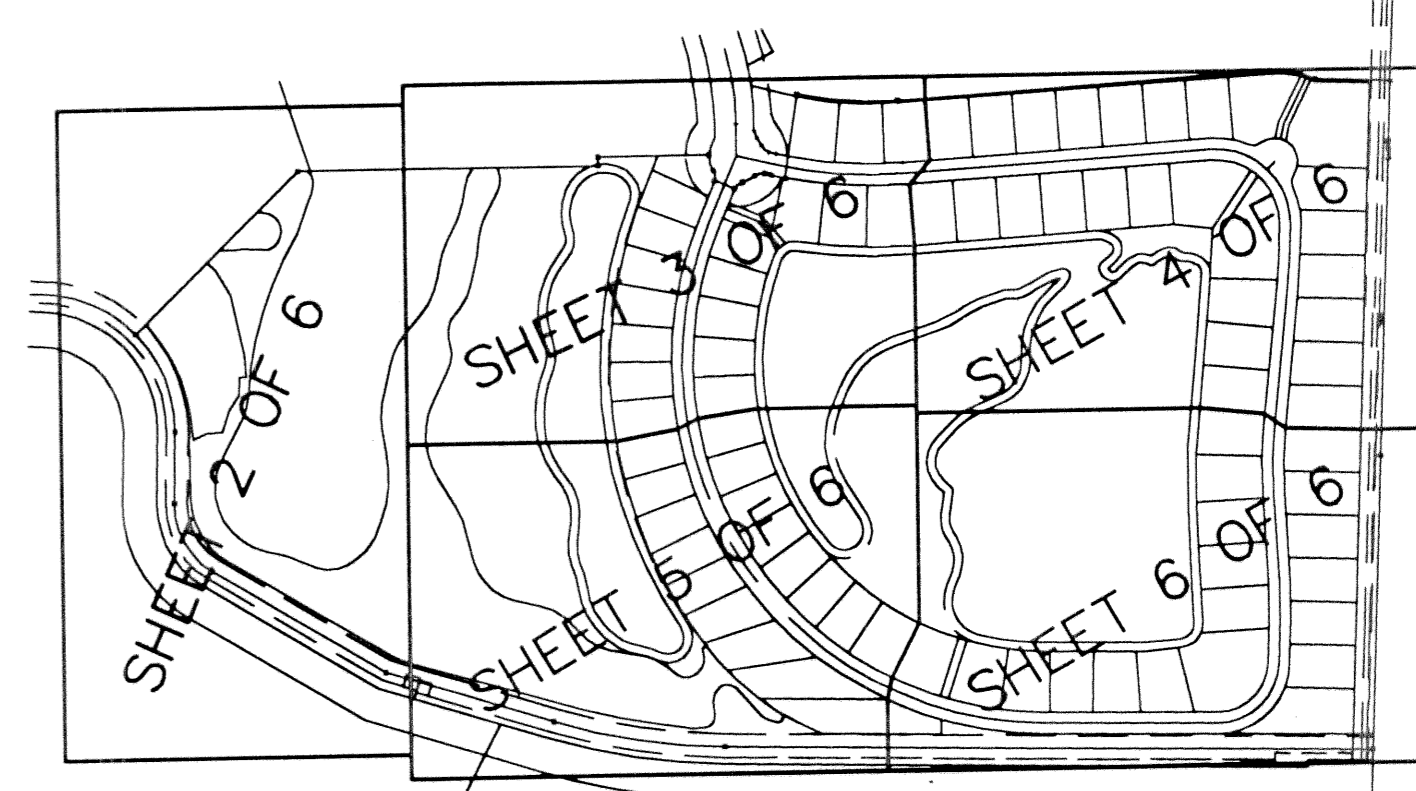
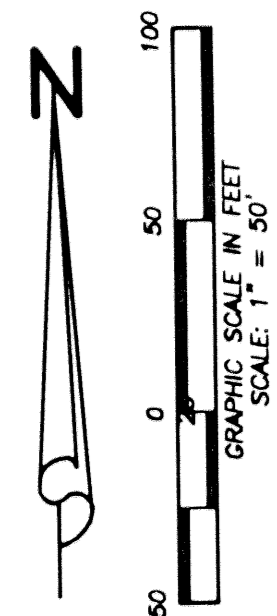


FRENCHMAN'S RESERVE PCD - PLAT F

BEING A REPLAT OF TRACT F FRENCHMAN'S RESERVE PCD - PLAT ONE
AS RECORDED IN PLAT BOOK 92, PAGES 11-20
IN PALM BEACH COUNTY, FLORIDA

BEING A PARCEL OF LAND LYING IN SECTION 31,
TOWNSHIP 41 SOUTH, RANGE 43 EAST, CITY OF PALM BEACH
GARDENS, PALM BEACH COUNTY, FLORIDA.

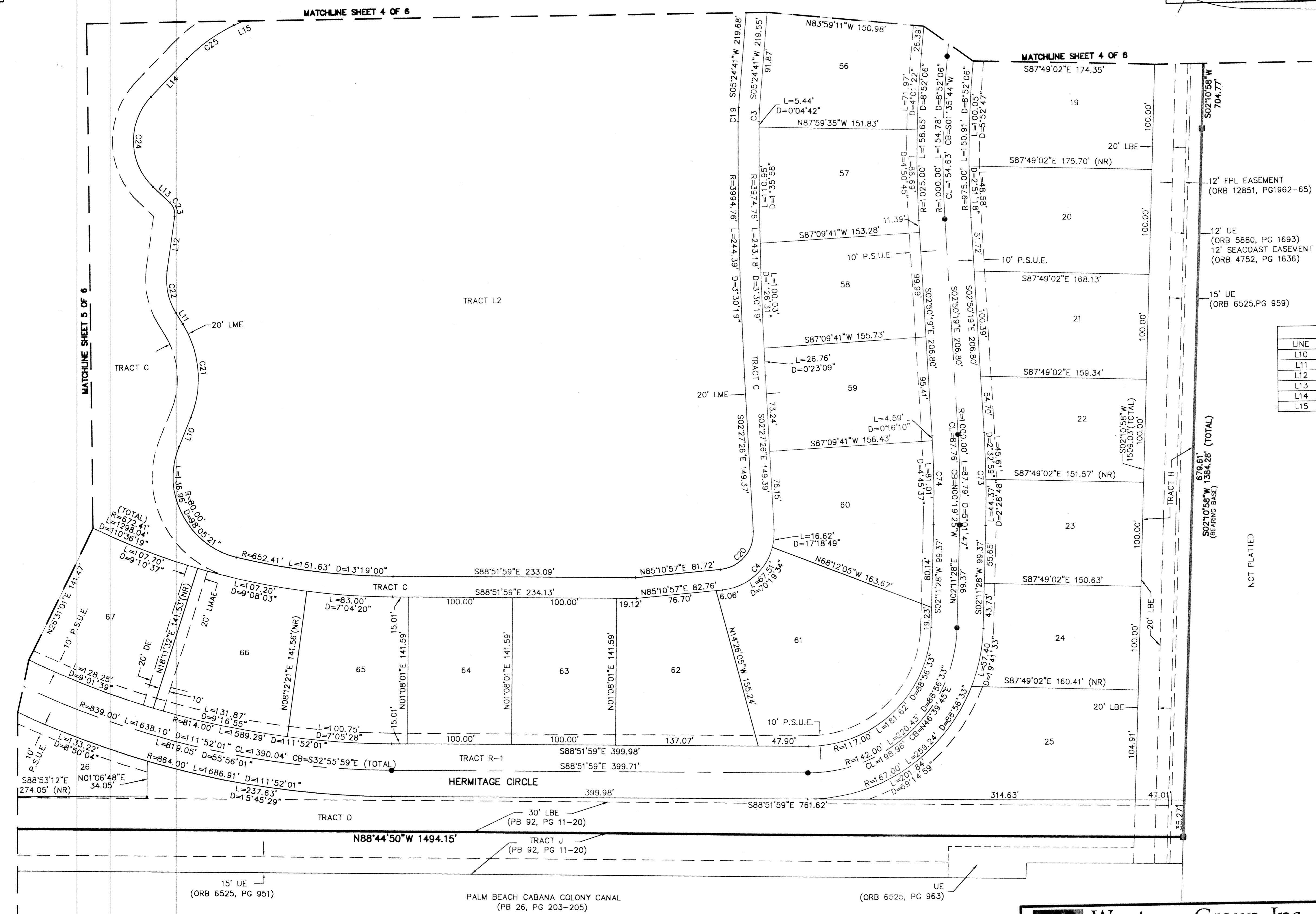
JANUARY, 2002 SHEET 6 OF 6



STATE OF FLORIDA
COUNTY OF PALM BEACH
THIS PLAT WAS FILED FOR
RECORD AT _____ M.
THIS _____ DAY OF _____
A.D. 2001 AND DULY RECORDED
IN PLAT BOOK _____ ON
PAGES _____ AND _____

DOROTHY H. WILKEN
CLERK CIRCUIT COURT

BY: _____
DEPUTY CLERK



| LINE TABLE | | | CURVE TABLE | | | |
|------------|-------------|---------|-------------|-----------|-----------|--------|
| LINE | BEARING | LENGTH | CURVE | RADIUS | DELTA | LENGTH |
| L10 | N22°32'22"E | 30.63 | C3 | 150.00 | 4°28'55" | 11.65 |
| L11 | S31°02'43"E | 12.80 | C4 | 55.00 | 87°38'23" | 84.13 |
| L12 | S08°32'59"W | 53.14 | C19 | 170.00 | 4°28'57" | 13.20 |
| L13 | N46°18'47"W | 21.76 | C20 | 35.00 | 87°38'23" | 53.54 |
| L14 | N44°49'28"E | 49.74 | C21 | 100.00 | 5°33'05" | 93.52 |
| L15 | N66°12'13"E | 68.72 | C22 | 60.00 | 39°35'42" | 41.46 |
| C23 | | 15.00 | | 54°51'46" | | 14.36 |
| C24 | | 60.00 | | 91°08'15" | | 95.44 |
| C25 | | 150.00 | | 21°22'45" | | 55.97 |
| C73 | | 1025.00 | | 5°01'47" | | 89.98 |
| C74 | | 975.00 | | 5°01'47" | | 85.59 |

- LEGEND:**
- CL = CENTERLINE
 - WSE = WATER AND SEWER EASEMENT
 - PBCO = PALM BEACH COUNTY
 - LAE = LIMITED ACCESS EASEMENT
 - LBE = LANDSCAPE BUFFER EASEMENT
 - LSE = LIFT STATION EASEMENT
 - (C) = CALCULATED
 - CMB = COMMISSIONERS' MINUTES BOOK
 - DE = DRAINAGE EASEMENT
 - DB = DEED BOOK
 - FB = FOUND
 - FPL = FLORIDA POWER & LIGHT
 - IP = IRON PIPE
 - IRC = IRON ROD WITH PLASTIC CAP
 - LB = LICENSED BUSINESS
 - LS = LICENSED SURVEYOR
 - LWE = LAKE MAINTENANCE EASEMENT
 - LWAE = LAKE MAINTENANCE ACCESS EASEMENT
 - (M) = MEASURED
 - MON = MONUMENT
 - ORB = OFFICIAL RECORD BOOK
 - (P) = PLAT
 - PB = PLAT BOOK
 - PG = PAGE
 - POB = POINT OF BEGINNING
 - POC = POINT OF COMMENCEMENT
 - PRM = PERMANENT REFERENCE MONUMENT
 - PSUE = PRIVATE NON-EXCLUSIVE EASEMENT
 - R/W = RIGHT-OF-WAY
 - RPB = ROAD PLAT BOOK
 - (S) = SURVEY
 - (SE) = UTILITY EASEMENT
 - UE = PERMANENT CONTROL POINT
 - SET 4"x4" CONCRETE MONUMENT "LB#7055"

Wantman Group, Inc.
Engineering ♦ Surveying ♦ Mapping
901 NORTHPOINT PARKWAY, SUITE 204
WEST PALM BEACH, FL 33407
(561) 687-2220 phone (561) 687-1110 fax
CERT No. 6091 - LB No. 7055

| | | | |
|-----|------------------------------------|--------------|---------------|
| CAD | K:\TOLLBROS\FRENCHMAN\DWG\218PLATF | | |
| REF | K:\TOLLBROS\FRENCHMAN\DWG\218MG01 | | |
| FLD | FB. | PG. | JOB 01-218F |
| OFF | AJP/MRJ | | DATE 11/14/01 |
| CKD | RBP | SHEET 6 OF 6 | DWG |