

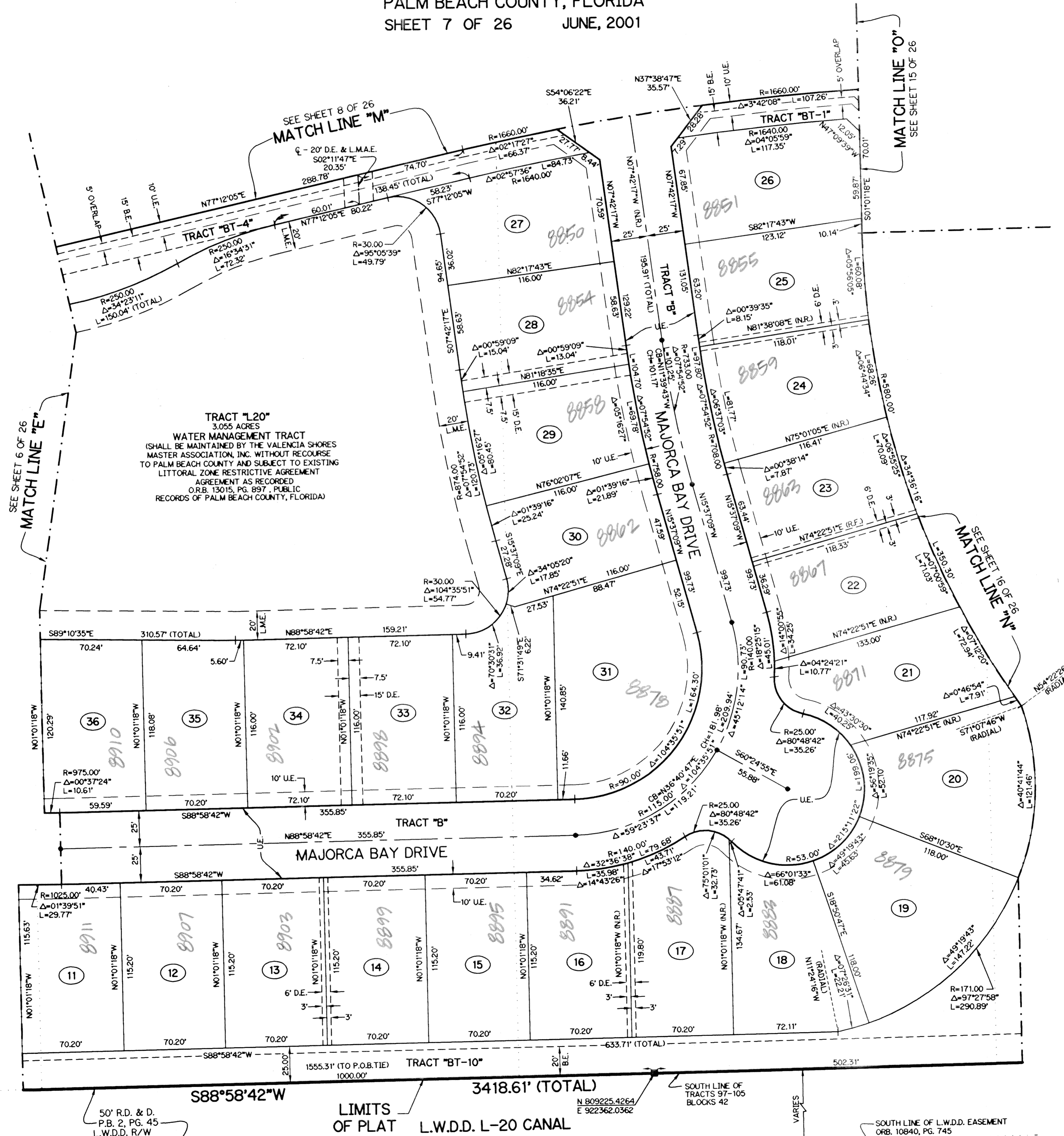
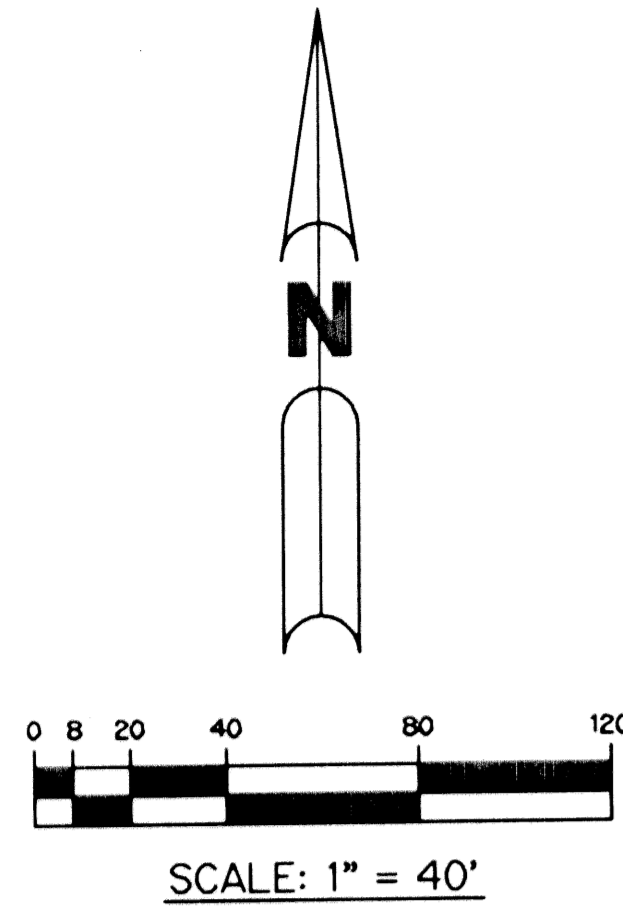
VALENCIA SHORES-PLAT ONE

BEING A REPLAT OF A PORTION OF TRACTS 60 THROUGH 69, 79, 88 AND 105 AND ALL OF TRACTS 70 THROUGH 78 AND TRACTS 89 THROUGH 104, BLOCK 42 PALM BEACH FARMS COMPANY PLAT NO. 3 AS RECORDED IN PLAT BOOK 2, PAGES 45 THROUGH 54 OF THE PUBLIC RECORDS OF PALM BEACH COUNTY, FLORIDA. LYING IN SECTIONS 7 AND 8, TOWNSHIP 45 SOUTH, RANGE 42 EAST,

PALM BEACH COUNTY, FLORIDA

SHEET 7 OF 26 JUNE, 2001

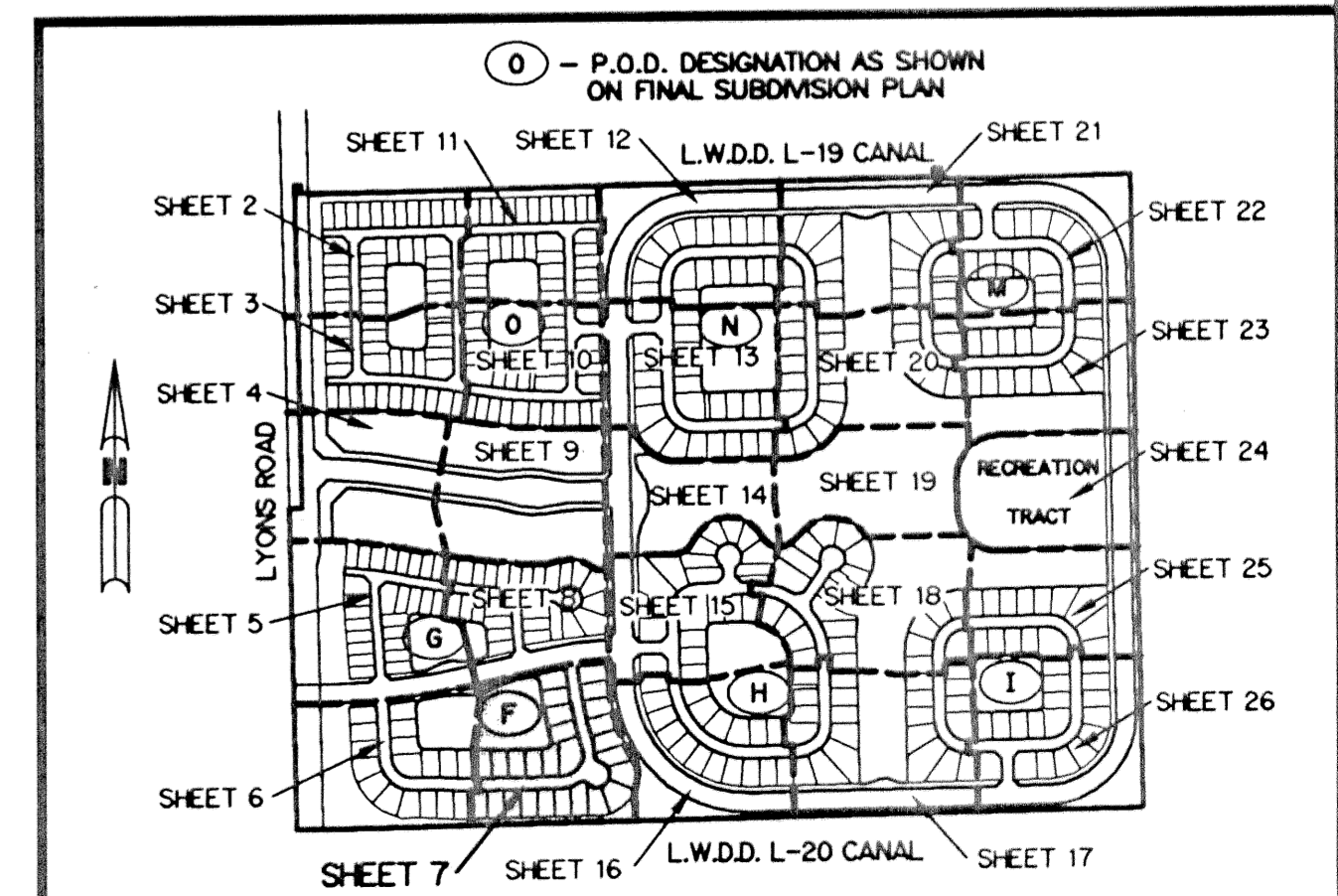
THIS INSTRUMENT PREPARED BY
PERRY C. WHITE, P.S.M. 4213, STATE OF FLORIDA
LAWSON, NOBLE AND WEBB, INC., LB-6674
ENGINEERS PLANNERS SURVEYORS
420 COLUMBIA DRIVE, SUITE 110
WEST PALM BEACH, FLORIDA



LEGEND:

- SET PERMANENT REFERENCE MONUMENT, L.B. #6674
- FOUND PERMANENT REFERENCE MONUMENT, L.B. #6674
- SET PERMANENT CONTROL POINT, L.B. #6674
- FOUND PERMANENT CONTROL POINT, L.B. #6674
- Δ DELTA ANGLE
- B.E. BUFFER EASEMENT
- CB CHORD BEARING
- CH CHORD DISTANCE
- CL CENTERLINE
- D.B. DEED BOOK
- DE DRAINAGE EASEMENT
- GND. GROUND
- L. ARC LENGTH
- L.A.E. LIMITED ACCESS EASEMENT
- L.M.A.E. LAKE MAINTENANCE ACCESS EASEMENT
- L.M.E. LAKE MAINTENANCE EASEMENT
- L.W.D.D. LAKE WORTH DRAINAGE DISTRICT
- N.R. NOT RADIAL
- N.T.S. NOT TO SCALE
- O.E. OVERHANG EASEMENT
- OR.B. OFFICIAL RECORD BOOK
- P.B. PLAT BOOK
- P.C. POINT OF CURVATURE
- P.C.P. PERMANENT CONTROL POINT
- P.D.E. PRIVATE DRAINAGE EASEMENT
- PGS. PAGES
- P.O.B. POINT OF BEGINNING
- P.O.C. POINT OF COMMENCEMENT
- P.S.A. PROFESSIONAL SURVEYOR AND MAPPER
- P.T. POINT OF TANGENCY
- R. RADIUS
- RAD. RADIAL
- R.D. & D. ROAD, DITCH & DYKE RESERVATION PER P.B. 2, PG. 45-54
- R/W. RIGHT-OF-WAY
- S.F. SQUARE FEET
- TYP. TYPICAL
- U.E. UTILITY EASEMENT
- R.F. RADIAL TO FRONT
- R.F.C. PALM BEACH FARMS COMPANY PLAT NO. 3 (P.B. 2, PGS. 45-54)
- DENOTES TRACT NUMBER PER PALM BEACH FARMS COMPANY PLAT NO. 3 (P.B. 2, PG. 45-54)
- N 737648.0171
E 905258.2326
- DENOTES STATE PLANE COORDINATES

KEY MAP
N.T.S.



BOOK 97
PAGE 44
FLOOD MAP # 105A
ZONING P.U.D.
QUAD # 44
ZIP CODE 33447
TAX 744
P.U.D. NAME VALENCIA IV (VALENCIA SHORES)