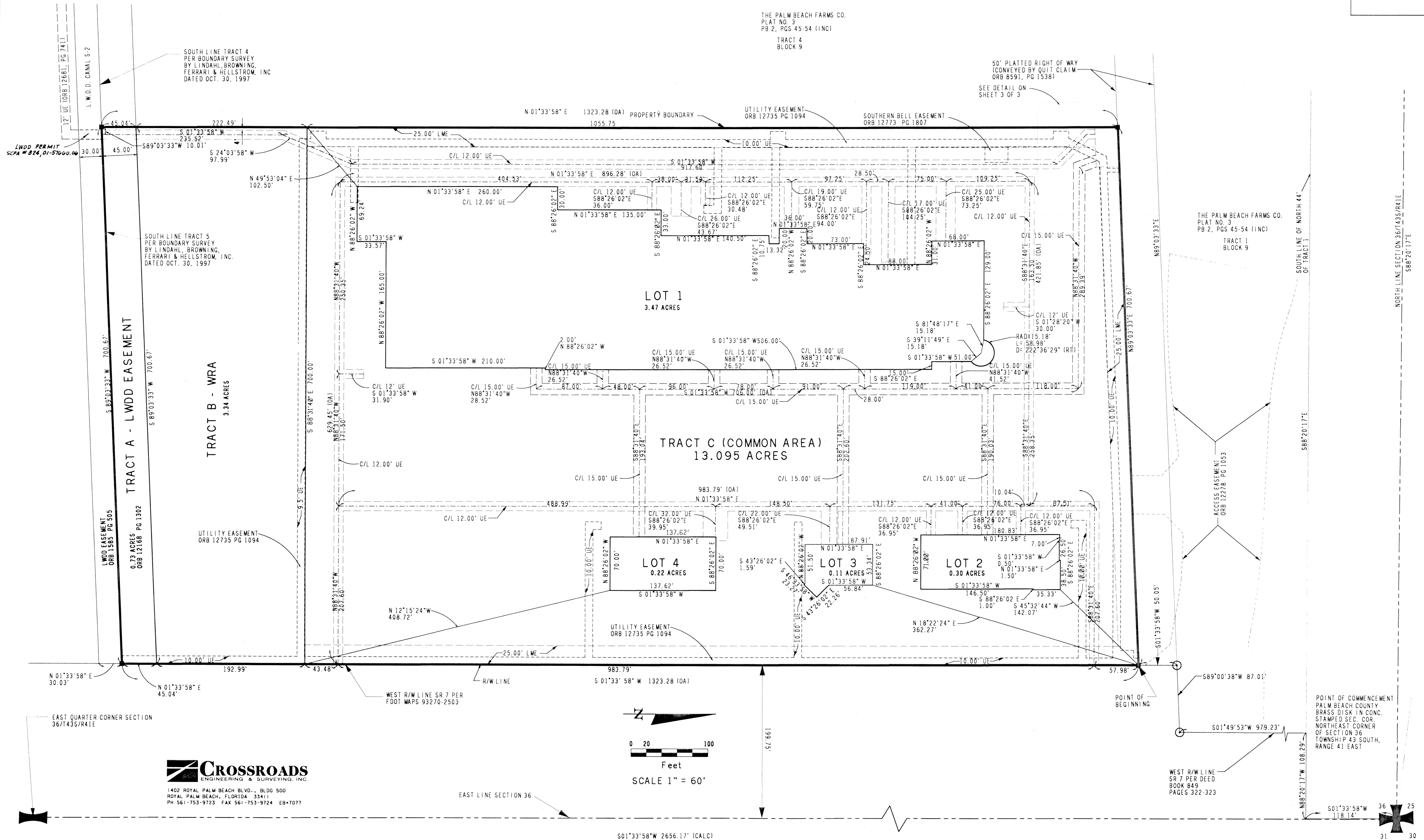


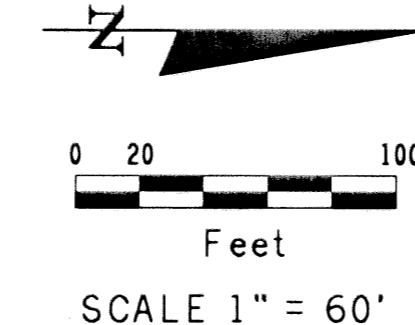
COMMONS AT ROYAL PALM BEACH

BEING A PORTION OF THE SOUTHEAST QUARTER OF THE NORTHEAST QUARTER OF SECTION 36. TOWNSHIP 43 SOUTH.
RANGE 41 EAST OF THE VILLAGE OF ROYAL PALM BEACH, PALM BEACH COUNTY, FLORIDA

SHEET 2 OF 3



Crossroads
ENGINEERING & SURVEYING, INC.
1402 ROYAL PALM BEACH BLVD., BLDG 500
ROYAL PALM BEACH, FLORIDA 33411
PH 561-753-9723 FAX 561-753-9724 EB-7077



POINT OF COMMENCEMENT
PALM BEACH COUNTY
BRASS DISK IN CONC.
STAMPED SEC. COR.
NORTHEAST CORNER
OF SECTION 36
TOWNSHIP 43 SOUTH,
RANGE 41 EAST