

STONEHAVEN, P.U.D. - PLAT 2

BEING A REPLAT OF LOTS 9, 10, 117 THROUGH 125, TRACT "C" AND A PORTION OF TRACT "A",
STONEHAVEN, P.U.D., AS RECORDED IN PLAT BOOK 89, PAGES 1 THROUGH 11,
INCLUSIVE, ALL OF THE PUBLIC RECORDS OF PALM BEACH COUNTY, FLORIDA. LYING IN
SECTION 7, TOWNSHIP 44 SOUTH, RANGE 42 EAST.

SHEET 2 OF 3 MAY, 2001

121

0709-004
WEST LINE SEC. 7-44-42
STATE ROAD 7 (U.S. 441)
TOWNSHIP 44 SOUTH, RANGE 41 EAST
TOWNSHIP 44 SOUTH, RANGE 42 EAST

PALM BEACH COUNTY
BRASS DISK "BUILDERS"
N 852297.106
E 916689.551

NORTHWEST CORNER
SECTION 7-44-42
PALM BEACH COUNTY
BRASS DISK

S 01°34'25" W
6652.79' (GRID)

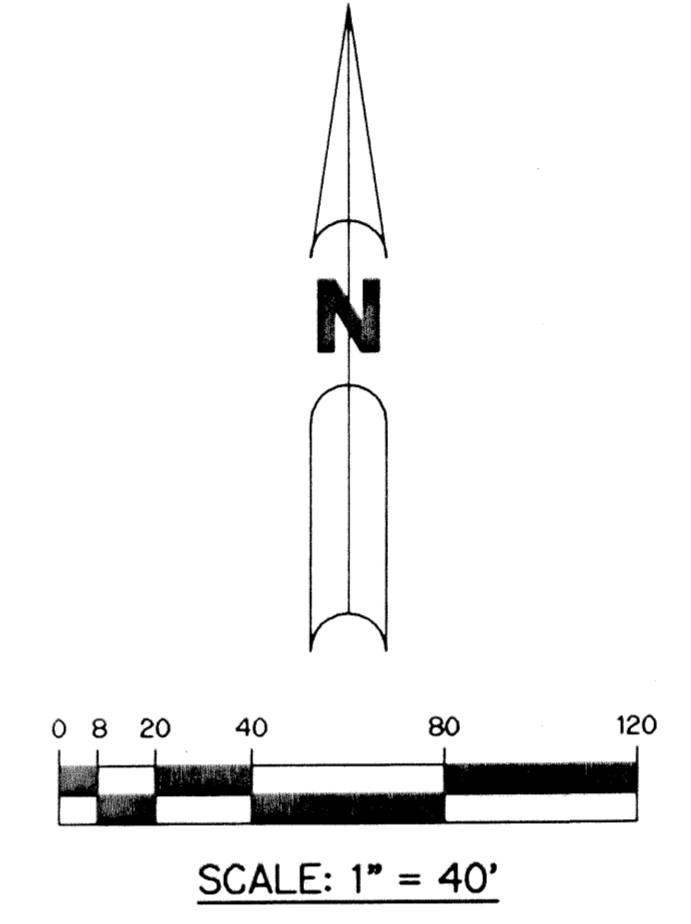
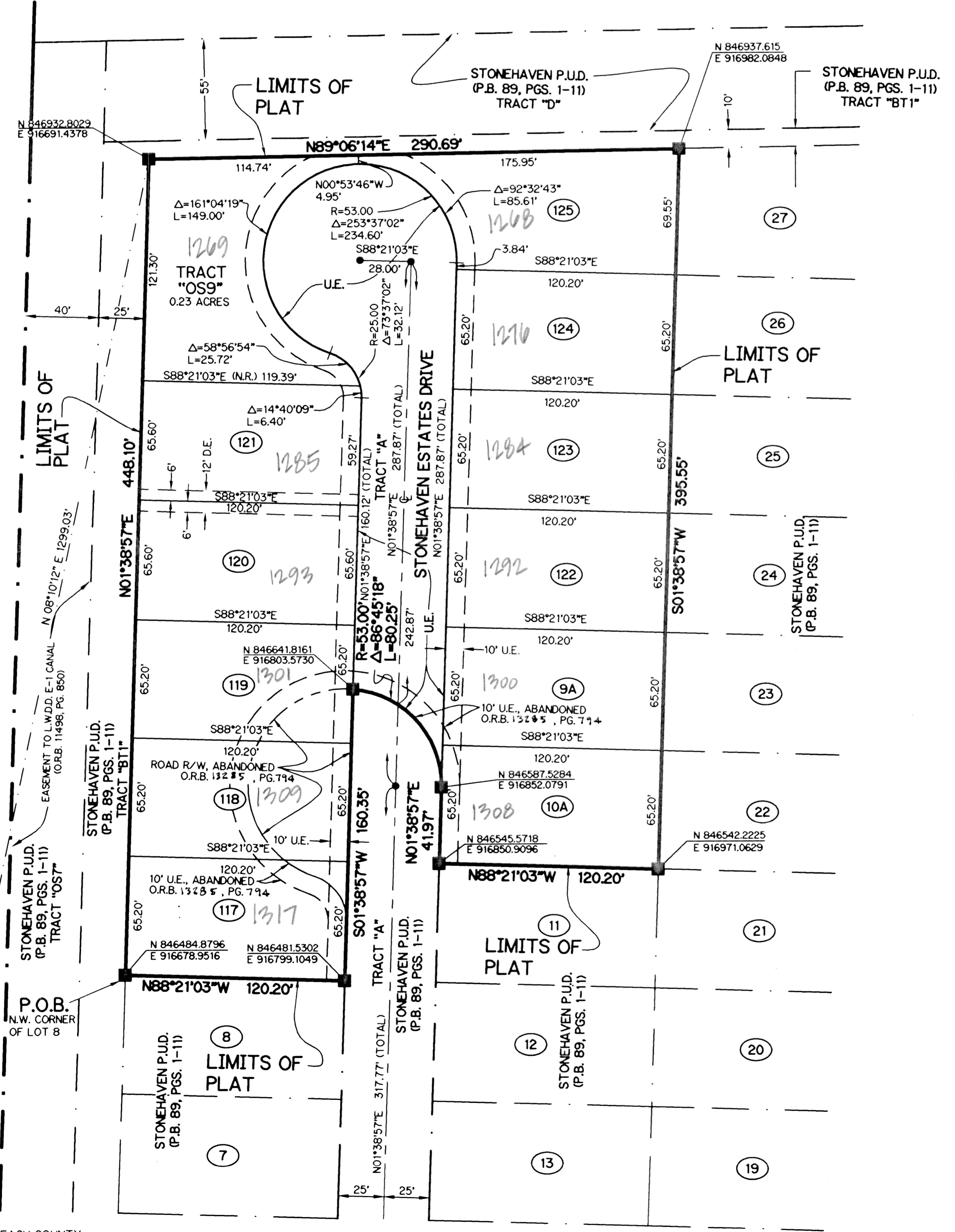
S 01°33'31" W
1332.32'

N 01°38'57" E
448.10'

N 01°38'57" E
160.35'

N 88°21'03" W
120.20'

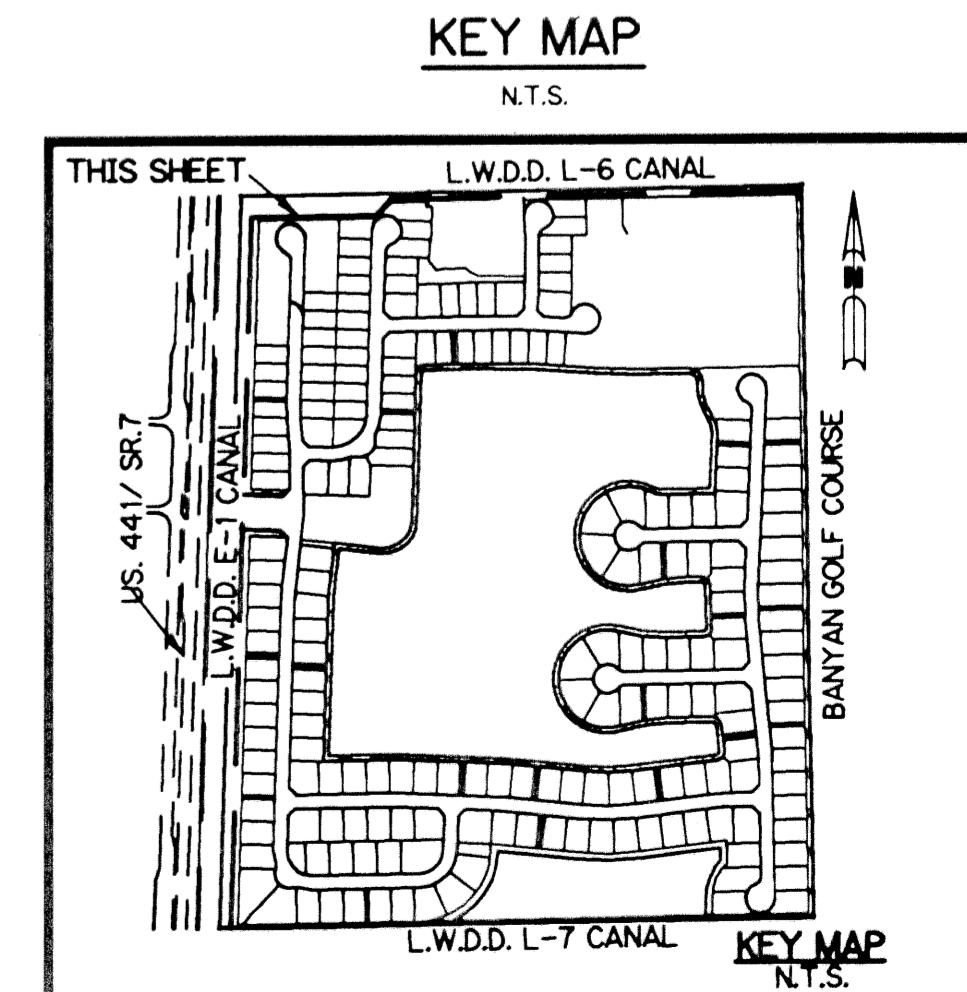
PALM BEACH COUNTY
BRASS DISK "NADA"
N 845546.829
E 916506.858



NOTE:
COORDINATES SHOWN ARE GRID COORDINATES
DATUM = NAD 83 (1990 ADJUSTMENT)
ZONE = FLORIDA EAST ZONE
LINEAR UNIT = U.S. SURVEY FEET
COORDINATE SYSTEM = 1983 STATE PLANE TRANSVERSE MERCATOR PROJECTION
ALL DISTANCES ARE GROUND
SCALE FACTOR = 1.0000193
N 01°38'57" E (PLAT BEARING)
N 01°35'48" E (GRID BEARING)
(PLAT TO GRID 00°03'09" COUNTERCLOCKWISE)

- LEGEND:**
- - SET PERMANENT REFERENCE MONUMENT, LB-6674
 - - PERMANENT CONTROL POINT, LB-6674
 - Δ - DELTA ANGLE
 - B.E. - BUFFER EASEMENT
 - CB - CHORD BEARING
 - CH - CHORD
 - C - CENTERLINE
 - D.B. - DEED BOOK
 - D.E. - DRAINAGE EASEMENT
 - L - ARC LENGTH
 - A.E. - ACCESS EASEMENT
 - L.A.E. - LIMITED ACCESS EASEMENT
 - L.M.A.E. - LAKE MAINTENANCE ACCESS EASEMENT
 - L.M.E. - LAKE MAINTENANCE EASEMENT
 - L.W.D.D. - LAKE WORTH DRAINAGE DISTRICT
 - R - NOT RADIAL
 - N.T.S. - NOT TO SCALE
 - O.E. - OVERHANG EASEMENT
 - O.R.B. - OFFICIAL RECORD BOOK
 - P.B. - PLAT BOOK
 - PGS. - PAGES
 - P.S.M. - PROFESSIONAL SURVEYOR AND MAPPER
 - R - RADIUS
 - RAD. - RADIAL
 - R/W - RIGHT-OF-WAY
 - S.D.E. - SWALE DRAINAGE EASEMENT
 - S.T. - SURVEY TIE
 - U.E. - UTILITY EASEMENT
 - P.O.B. - POINT OF BEGINNING
 - N 737648.0171
E 905258.2326 - DENOTES STATE PLANE COORDINATES

THIS INSTRUMENT PREPARED BY
WILBUR F. DIVINE, P.S.M. 4190, STATE OF FLORIDA
LAWSON, NOBLE AND WEBB, INC.
ENGINEERS PLANNERS SURVEYORS
420 COLUMBIA DRIVE
WEST PALM BEACH, FLORIDA 33409
LB-6674



SUBDIVISION STONEHAVEN - PL 2
BOOK PAGE 121
FLOOD MAP# 100 A
ZONING P.U.D.
SE CT# 47
TAZ 1010
MUB NAME