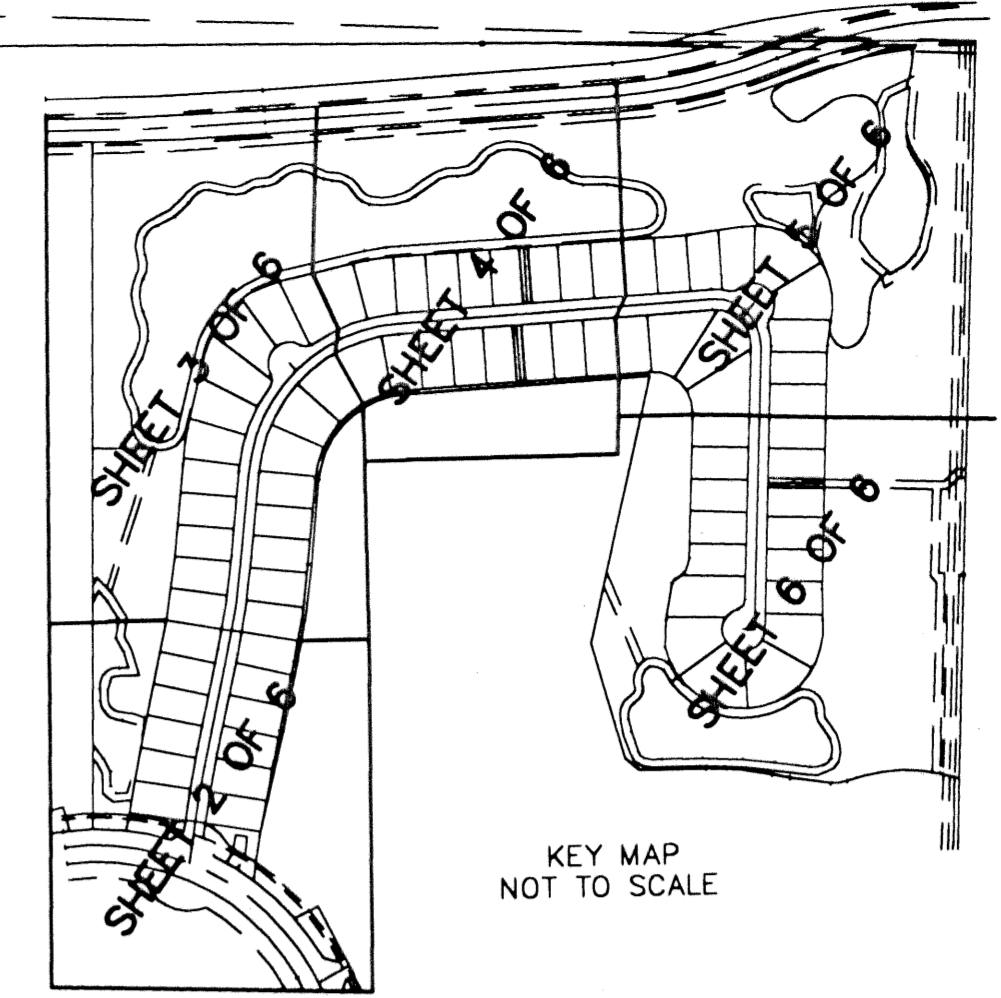
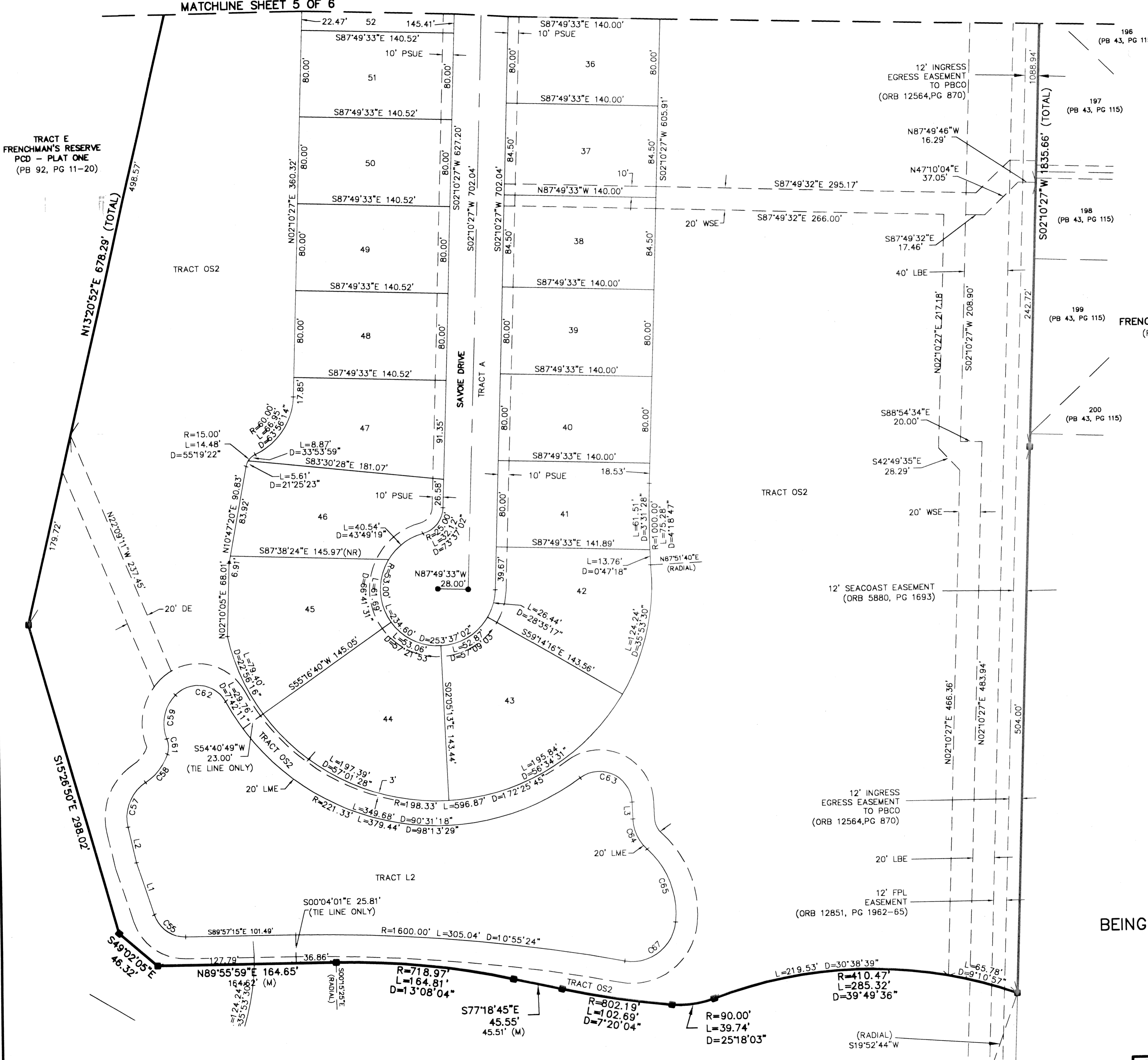


STATE OF FLORIDA
 COUNTY OF PALM BEACH
 THIS PLAT WAS FILED FOR
 RECORD AT _____ M.
 THIS _____ DAY OF _____
 A.D. 2001 AND DULY RECORDED
 IN PLAT BOOK _____ ON
 PAGES _____ AND _____
 DOROTHY H. WILKEN
 CLERK CIRCUIT COURT
 BY: _____
 DEPUTY CLERK



MATCHLINE SHEET 5 OF 6

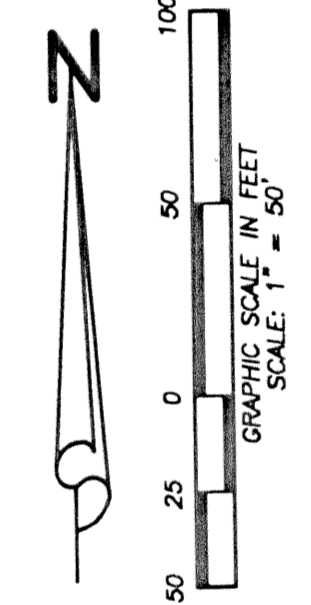
TRACT E
 FRENCHMAN'S RESERVE
 PCD - PLAT ONE
 (PB 92, PG 11-20)



PLAT FIVE
 FRENCHMAN'S LANDING
 (PB 43, PG 115)

LEGEND:

- CL = CENTERLINE
- WSE = WATER AND SEWER EASEMENT
- PBCCO = PALM BEACH COUNTY
- LAE = LIMITED ACCESS EASEMENT
- LBE = LANDSCAPE BUFFER EASEMENT
- LME = LAKE MAINTENANCE EASEMENT
- LSE = LIFT STATION EASEMENT
- CALC = CALCULATED
- CMB = COMMISSIONERS' MINUTES BOOK
- DE = DRAINAGE EASEMENT
- DB = DEED BOOK
- FND = FOUND
- FPL = FLORIDA POWER & LIGHT
- IP = IRON PIPE
- IRC = IRON ROD WITH PLASTIC CAP
- LB = LICENSED BUSINESS
- LS = LICENSED SURVEYOR
- (M) = MEASURED
- MCCB = MINUTES OF THE COUNTY COMMISSIONER'S BOOK
- MON = MONUMENT
- ORB = OFFICIAL RECORD BOOK
- (P) = PLAT
- PB = PLAT BOOK
- PG = PAGE
- POB = POINT OF BEGINNING
- POC = POINT OF COMMENCEMENT
- PRM = PERMANENT REFERENCE MONUMENT
- PSUE = PRIVATE NON-EXCLUSIVE EASEMENT
- R/W = RIGHT-OF-WAY
- R/PB = ROAD PLAT BOOK
- SUA = SEACOAST UTILITY EASEMENT
- (S) = SURVEY
- UE = UTILITY EASEMENT
- WBE = WETLAND BUFFER EASEMENT
- WCP = PERMANENT CONTROL POINT "LB#7055"
- WCP = SET 4"x4" CONCRETE MONUMENT "LB#7055"



LINE	BEARING	LENGTH
L1	N18°01'01"W	51.82
L2	N12°43'32"W	33.91
L3	S01°34'19"E	15.29

CURVE	RADIUS	DELTA	LENGTH
C55	30.00	71°56'14"	37.67
C57	39.26	64°41'14"	44.33
C58	52.27	36°57'05"	33.71
C59	37.88	66°30'44"	43.97
C61	20.00	41°41'49"	14.55
C62	29.00	107°27'30"	54.39
C63	30.00	124°16'11"	65.07
C64	40.00	45°40'08"	31.88
C65	80.00	53°40'43"	74.95
C67	40.00	94°31'53"	66.00

FRENCHMAN'S RESERVE PCD - PLAT "D"

BEING A REPLAT OF TRACT D, FRENCHMAN'S RESERVE PCD - PLAT ONE
 AS RECORDED IN PLAT BOOK 92, PAGES 11-20,
 IN PALM BEACH COUNTY, FLORIDA

LYING IN SECTION 31,
 TOWNSHIP 41 SOUTH, RANGE 43 EAST, CITY OF PALM BEACH
 GARDENS, PALM BEACH COUNTY, FLORIDA.

JANUARY, 2002 SHEET 6 OF 6

Wantman Group, Inc.
 Engineering ♦ Surveying ♦ Mapping
 901 NORTHPOINT PARKWAY, SUITE 204
 WEST PALM BEACH, FL 33407
 (561) 687-2220 phone (561) 687-1110 fax
 CERT No. 6091 - LB No. 7055

CAD	K:\TOLLBROS\FRENCHMAN\DWG\218PLATD		
REF	K:\TOLLBROS\FRENCHMAN\DWG\218MG01		
FLD	RP/AB	FB. 000 PG. 00	JOB 218D
OFF	AJP/MRJ		DATE 8/20/01
CKD	RBP	SHEET 6 OF 6	DWG