

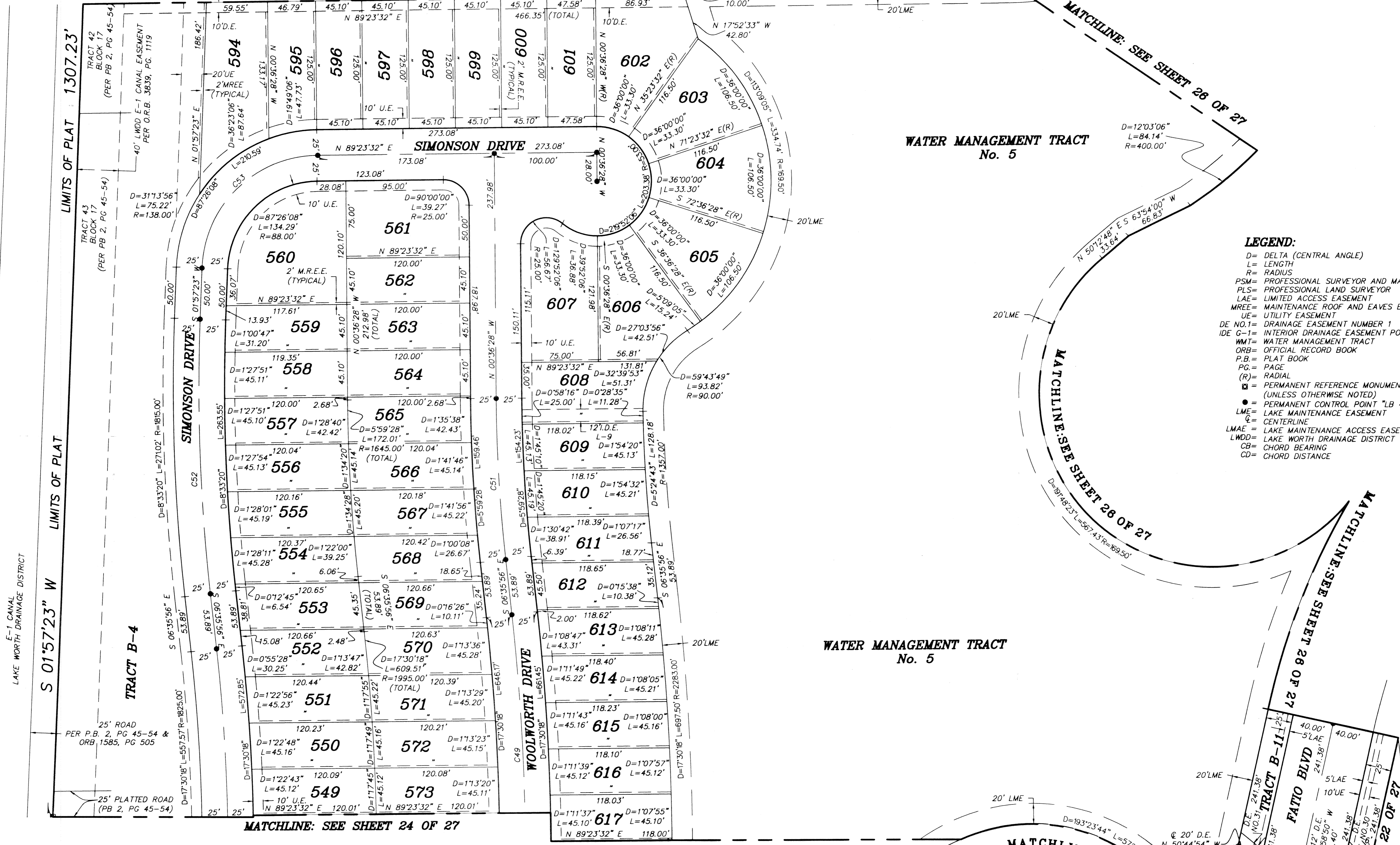
MATCHLINE: SEE SHEET 27 OF 27

MATCHLINE: SEE SHEET 27 OF 27

WATER MANAGEMENT TRACT No. 5

LEGEND:

- D= DELTA (CENTRAL ANGLE)
- L= LENGTH
- R= RADIUS
- PSM= PROFESSIONAL SURVEYOR AND MAPPER
- PLS= PROFESSIONAL LAND SURVEYOR
- LAE= LIMITED ACCESS EASEMENT
- MREE= MAINTENANCE ROOF AND EAVES EASEMENT
- UE= UTILITY EASEMENT
- DE NO.1= DRAINAGE EASEMENT NUMBER 1
- IDE G-1= INTERIOR DRAINAGE EASEMENT POD G-1
- WMT= WATER MANAGEMENT TRACT
- ORB= OFFICIAL RECORD BOOK
- P.B.= PLAT BOOK
- PG.= PAGE
- (R)= RADIAL
- ☐= PERMANENT REFERENCE MONUMENT "LB 4318" (UNLESS OTHERWISE NOTED)
- = PERMANENT CONTROL POINT "LB 4318"
- ⊕= LAKE MAINTENANCE EASEMENT
- ⊕= CENTERLINE
- LMAE= LAKE MAINTENANCE ACCESS EASEMENT
- LWDD= LAKE WORTH DRAINAGE DISTRICT
- CB= CHORD BEARING
- CD= CHORD DISTANCE



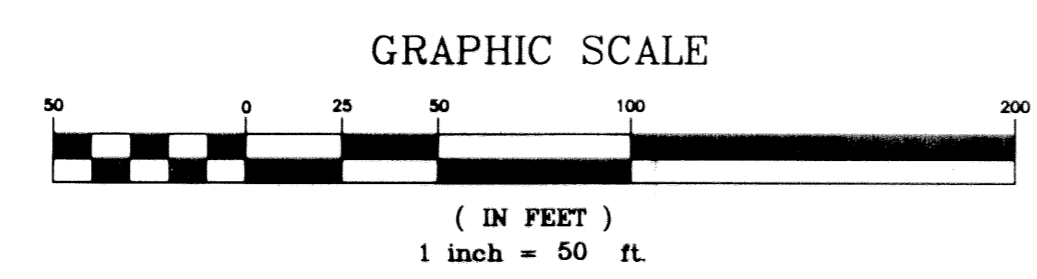
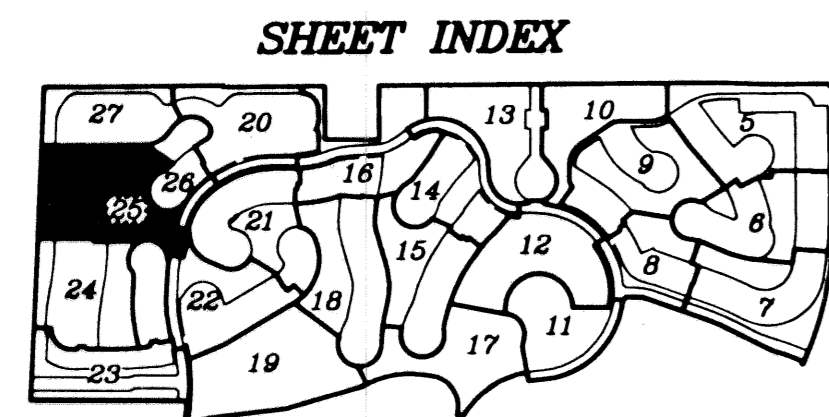
MATCHLINE: SEE SHEET 24 OF 27

MATCHLINE: SEE SHEET 24 OF 27

MATCHLINE: SEE SHEET 22 OF 27

OLYMPIA PHASE I

BEING A REPLAT OF A PORTION OF BLOCKS 16, 17, 19 AND 20 OF PALM BEACH FARMS COMPANY PLAT No. 3, AS RECORDED IN PLAT BOOK 2, PAGES 45 THROUGH 54 OF THE PUBLIC RECORDS OF PALM BEACH COUNTY FLORIDA. IN PART OF SECTIONS 7, 8, 17, 18, 19 AND 20, TOWNSHIP 44 SOUTH, RANGE 42 EAST, VILLAGE OF WELLINGTON, PALM BEACH COUNTY, FLORIDA
SHEET 25 OF 27
JANUARY 2002



CURVE	DELTA	LENGTH	RADIUS	CHORD BEARING	CHORD DISTANCE
C49	17°30'18"	653.81	2140.00'	N02°09'12"E	651.27
C50	17°30'18"	565.21	1850.00'	N02°09'12"E	563.01
C51	5°59'28"	156.85	1500.00'	S03°36'12"E	156.78
C52	8°33'20"	267.28	1790.00'	S02°19'17"E	267.04
C53	87°26'08"	172.44	113.00'	S45°40'28"W	156.19

NICK MILLER, INC.
Surveying & Mapping Consultants
SUITE 105
2560 RCA BLVD.
PALM BEACH GARDENS, FLORIDA 33410
TEL 561 627-5200 FAX 561 627-0983
D.B.P.R. LICENSED BUSINESS No. 4318

OLYMPIA PHASE I	
SHEET NO.	SCALE: 1"=50'
25	DATE: JANUARY 2002
	JOB NO. 1008.01
	FILE: 1008.01.DWG

