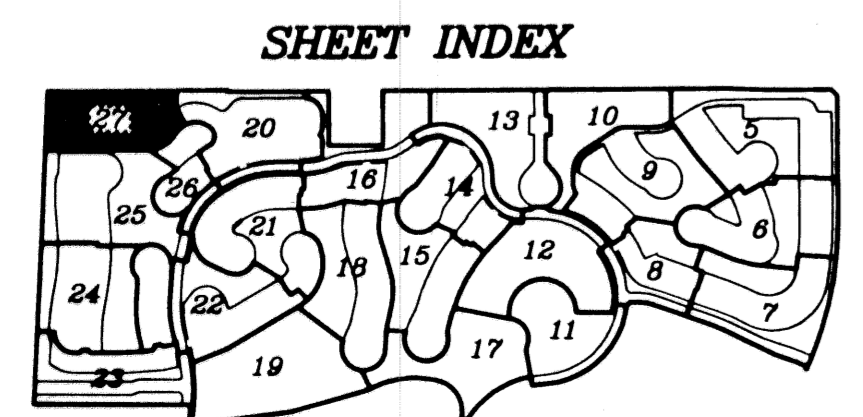
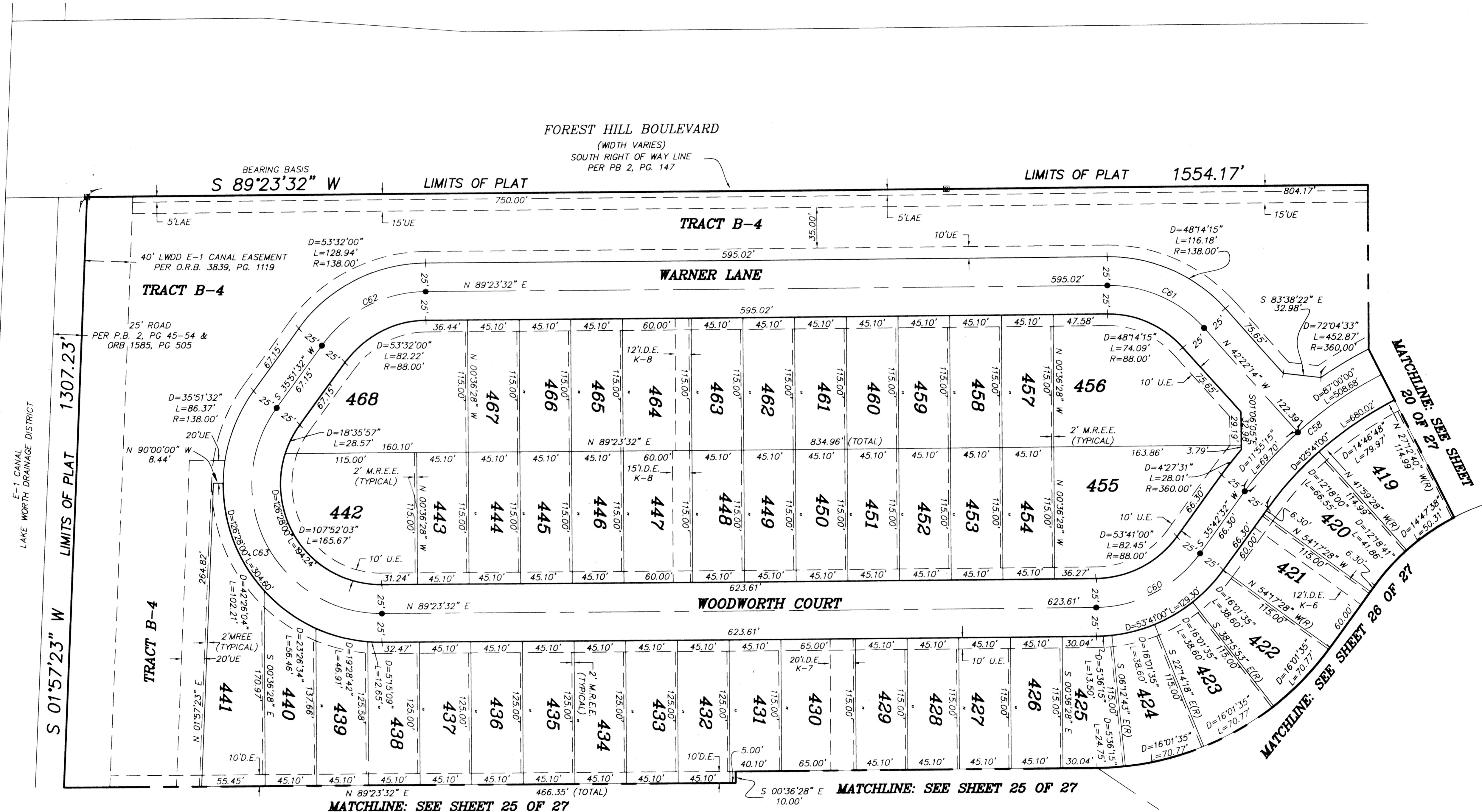
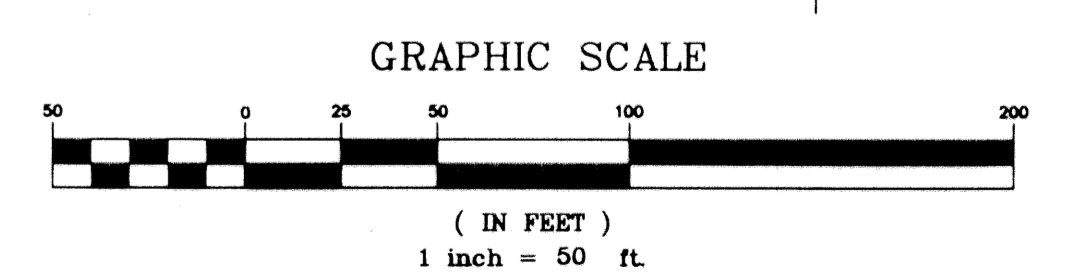


OLYMPIA PHASE I
 BEING A REPLAT OF A PORTION OF BLOCKS 16, 17, 19 AND 20 OF PALM BEACH FARMS COMPANY PLAT No. 3, AS RECORDED IN PLAT BOOK 2, PAGES 45 THROUGH 54 OF THE PUBLIC RECORDS OF PALM BEACH COUNTY FLORIDA. IN PART OF SECTIONS 7, 8, 17, 18, 19 AND 20, TOWNSHIP 44 SOUTH, RANGE 42 EAST, VILLAGE OF WELLINGTON, PALM BEACH COUNTY, FLORIDA
 SHEET 27 OF 27
 JANUARY 2002



CURVE TABLE					
CURVE	DELTA	LENGTH	RADIUS	CHORD BEARING	CHORD DISTANCE
C58	125°41'00"	734.85	335.00'	N81°26'58"W	596.13
C60	53°41'00"	105.88	113.00'	N62°33'02"E	102.04
C61	48°14'15"	95.13	113.00'	N66°29'21"W	92.35
C62	53°32'00"	105.58	113.00'	S62°37'32"W	101.78
C63	126°28'00"	249.42	113.00'	S27°22'28"E	201.78

- LEGEND:**
- D= DELTA (CENTRAL ANGLE)
 - L= LENGTH
 - R= RADIUS
 - PSM= PROFESSIONAL SURVEYOR AND MAPPER
 - PLS= PROFESSIONAL LAND SURVEYOR
 - LAE= LIMITED ACCESS EASEMENT
 - MREE= MAINTENANCE ROOF AND EAVES EASEMENT
 - UE= UTILITY EASEMENT
 - DE NO.1= DRAINAGE EASEMENT NUMBER 1
 - IDE G-1= INTERIOR DRAINAGE EASEMENT POD G-1
 - WMT= WATER MANAGEMENT TRACT
 - ORB= OFFICIAL RECORD BOOK
 - P.B.= PLAT BOOK
 - P.G.= PAGE
 - (R)= RADIAL
 - PM= PERMANENT REFERENCE MONUMENT "LB 4318" (UNLESS OTHERWISE NOTED)
 - PC= PERMANENT CONTROL POINT "LB 4318"
 - LME= LAKE MAINTENANCE EASEMENT
 - CL= CENTERLINE
 - LMAE= LAKE MAINTENANCE ACCESS EASEMENT
 - LWDD= LAKE WORTH DRAINAGE DISTRICT
 - CB= CHORD BEARING
 - CD= CHORD DISTANCE



OLYMPIA PHASE I		SHEET NO.	SCALE: 1"=50'
NICK MILLER, INC. Surveying & Mapping Consultants		27	DATE: JANUARY 2002
SUITE 105 2560 RCA BLVD. PALM BEACH GARDENS, FLORIDA 33410 TEL 561 627-5200 FAX 561 627-0983 D.B.P.R. LICENSED BUSINESS No. 4318		JOB NO. 1008.01	FILE: 1008.01