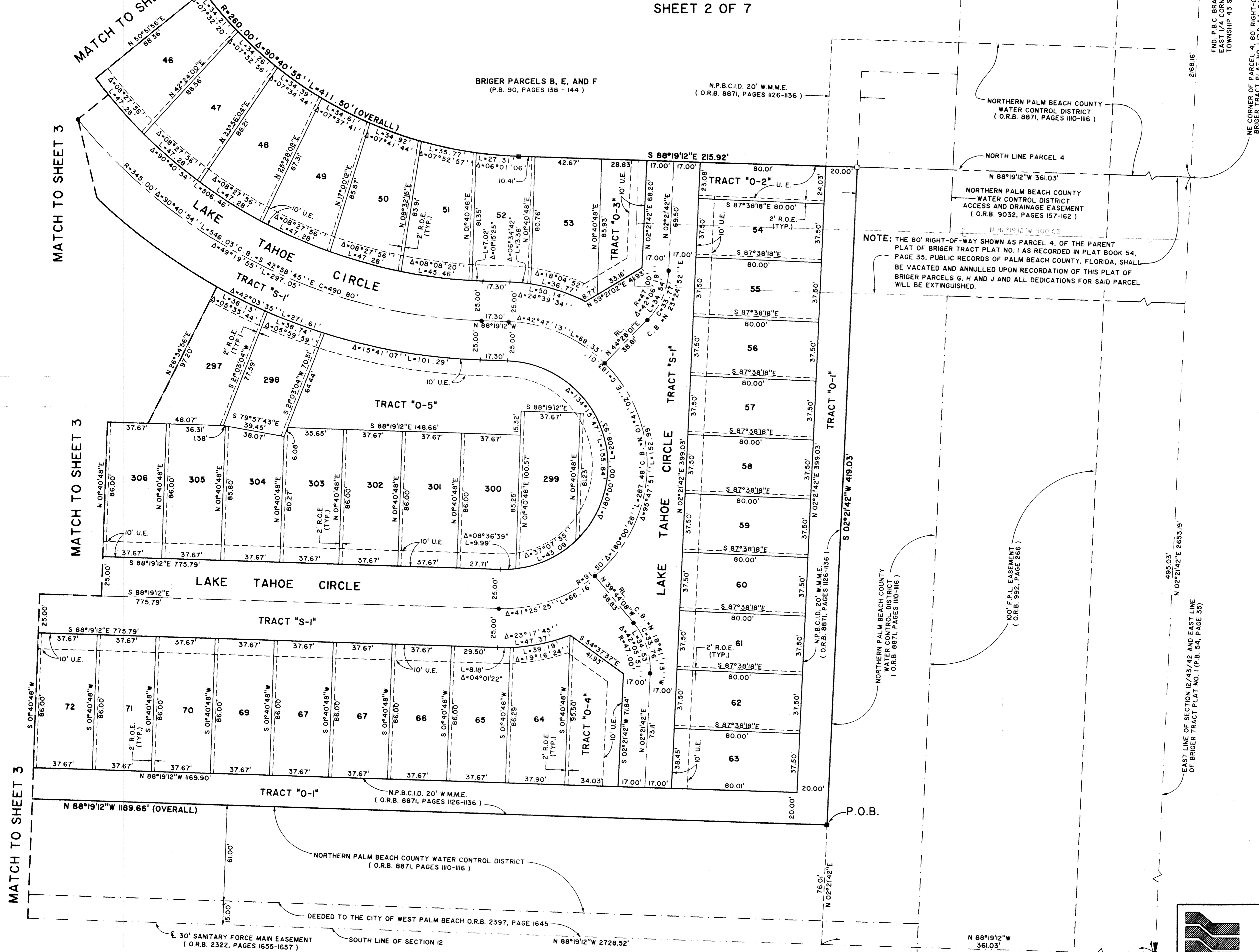


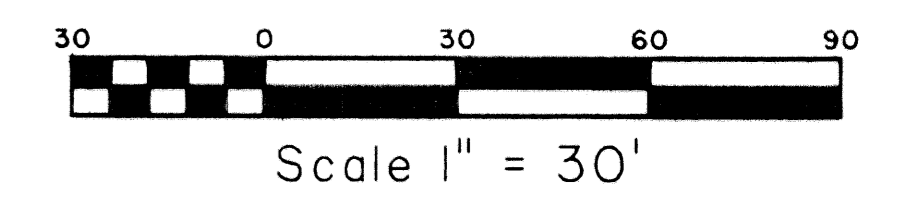
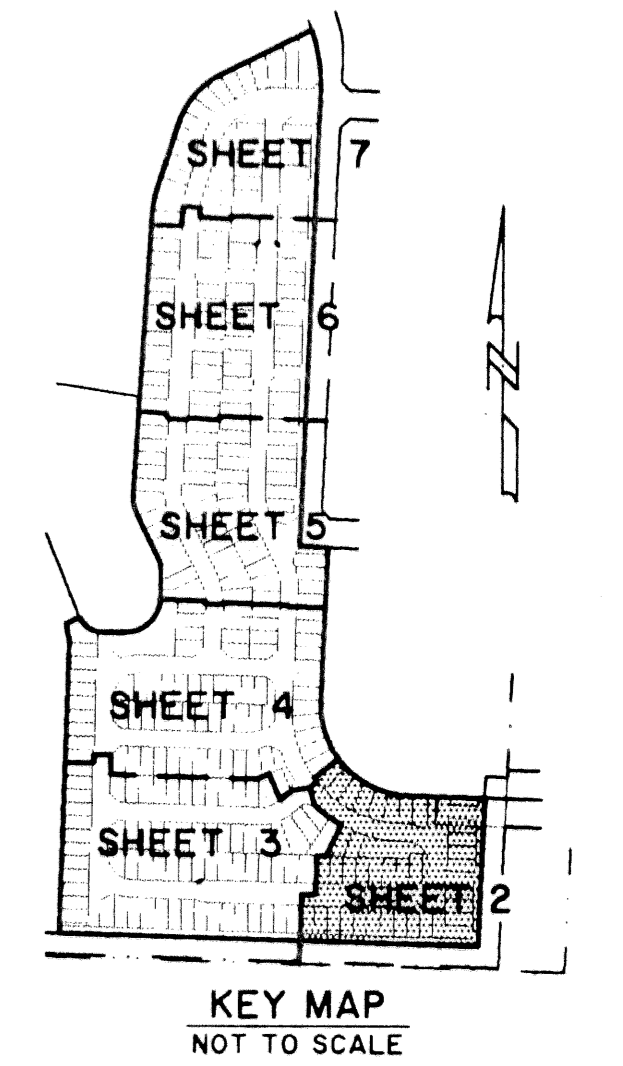
# BRIGER PARCELS G, H AND J

BEING A REPLAT OF A PORTION OF BRIGER TRACT PLAT NO. 1, AS RECORDED IN PLAT BOOK 54, PAGE 35, PUBLIC RECORDS OF PALM BEACH COUNTY, FLORIDA, LYING IN SECTION 12, TOWNSHIP 43 SOUTH, RANGE 42 EAST, CITY OF WEST PALM BEACH, PALM BEACH COUNTY, FLORIDA.

SHEET 2 OF 7



STATE OF FLORIDA SS  
 COUNTY OF PALM BEACH  
 THIS PLAT WAS FILED FOR RECORD AT \_\_\_\_\_  
 M., THIS \_\_\_\_ DAY OF \_\_\_\_\_ 2001  
 AND DULY RECORDED IN PLAT BOOK NO. \_\_\_\_\_  
 ON PAGE \_\_\_\_\_  
 DOROTHY H. WILKEN,  
 CLERK OF THE CIRCUIT COURT  
 BY \_\_\_\_\_ D.C.



**Landmark Surveying & Mapping Inc.**  
 1850 Forest Hill Boulevard  
 Ph. (561) 433-5405 Suite 100 W.P.B. Florida  
 LB # 4396

**BRIGER PARCELS G, H, AND J**

P.O.C.  
 FND. P.B.C. BRASS DISC  
 SE. CORNER OF SECTION 12,  
 TOWNSHIP 43 S., RANGE 42 E.

STANFORD AT THE VILLAGES AT PALM BEACH LAKES  
 (P.B. 62, PAGES 141-146)

DEEDED TO THE CITY OF WEST PALM BEACH O.R.B. 2397, PAGE 1645

NORTHERN PALM BEACH COUNTY WATER CONTROL DISTRICT  
 (O.R.B. 8871, PAGES 110-116)

30' SANITARY FORCE MAIN EASEMENT  
 (O.R.B. 2322, PAGES 1655-1657)

NORTHERN PALM BEACH COUNTY  
 WATER CONTROL DISTRICT  
 (O.R.B. 8871, PAGES 110-116)

100' F.P.L. EASEMENT  
 (O.R.B. 992, PAGE 266)

N.P.B.C.I.D. 20' W.M.M.E.  
 (O.R.B. 8871, PAGES 116-116)

N.P.B.C.I.D. 20' W.M.M.E.  
 (O.R.B. 8871, PAGES 116-116)

N.P.B.C.I.D. 20' W.M.M.E.  
 (O.R.B. 8871, PAGES 116-116)

N.P.B.C.I.D. 20' W.M.M.E.  
 (O.R.B. 8871, PAGES 116-116)

N.P.B.C.I.D. 20' W.M.M.E.  
 (O.R.B. 8871, PAGES 116-116)

N.P.B.C.I.D. 20' W.M.M.E.  
 (O.R.B. 8871, PAGES 116-116)

N.P.B.C.I.D. 20' W.M.M.E.  
 (O.R.B. 8871, PAGES 116-116)

N.P.B.C.I.D. 20' W.M.M.E.  
 (O.R.B. 8871, PAGES 116-116)

N.P.B.C.I.D. 20' W.M.M.E.  
 (O.R.B. 8871, PAGES 116-116)

N.P.B.C.I.D. 20' W.M.M.E.  
 (O.R.B. 8871, PAGES 116-116)

N.P.B.C.I.D. 20' W.M.M.E.  
 (O.R.B. 8871, PAGES 116-116)

N.P.B.C.I.D. 20' W.M.M.E.  
 (O.R.B. 8871, PAGES 116-116)

N.P.B.C.I.D. 20' W.M.M.E.  
 (O.R.B. 8871, PAGES 116-116)

N.P.B.C.I.D. 20' W.M.M.E.  
 (O.R.B. 8871, PAGES 116-116)

N.P.B.C.I.D. 20' W.M.M.E.  
 (O.R.B. 8871, PAGES 116-116)

N.P.B.C.I.D. 20' W.M.M.E.  
 (O.R.B. 8871, PAGES 116-116)

N.P.B.C.I.D. 20' W.M.M.E.  
 (O.R.B. 8871, PAGES 116-116)

N.P.B.C.I.D. 20' W.M.M.E.  
 (O.R.B. 8871, PAGES 116-116)

N.P.B.C.I.D. 20' W.M.M.E.  
 (O.R.B. 8871, PAGES 116-116)

N.P.B.C.I.D. 20' W.M.M.E.  
 (O.R.B. 8871, PAGES 116-116)

N.P.B.C.I.D. 20' W.M.M.E.  
 (O.R.B. 8871, PAGES 116-116)

N.P.B.C.I.D. 20' W.M.M.E.  
 (O.R.B. 8871, PAGES 116-116)

N.P.B.C.I.D. 20' W.M.M.E.  
 (O.R.B. 8871, PAGES 116-116)

N.P.B.C.I.D. 20' W.M.M.E.  
 (O.R.B. 8871, PAGES 116-116)

N.P.B.C.I.D. 20' W.M.M.E.  
 (O.R.B. 8871, PAGES 116-116)

N.P.B.C.I.D. 20' W.M.M.E.  
 (O.R.B. 8871, PAGES 116-116)

N.P.B.C.I.D. 20' W.M.M.E.  
 (O.R.B. 8871, PAGES 116-116)

N.P.B.C.I.D. 20' W.M.M.E.  
 (O.R.B. 8871, PAGES 116-116)

N.P.B.C.I.D. 20' W.M.M.E.  
 (O.R.B. 8871, PAGES 116-116)