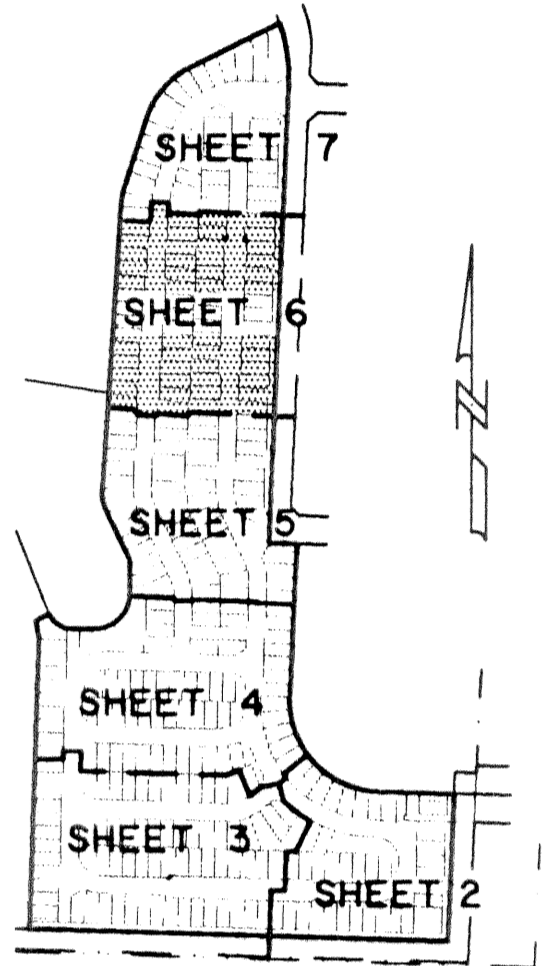


BRIGER PARCELS G, H AND J

BEING A REPLAT OF A PORTION OF BRIGER TRACT PLAT NO. 1, AS RECORDED IN PLAT BOOK 54, PAGE 35,
PUBLIC RECORDS OF PALM BEACH COUNTY, FLORIDA, LYING IN SECTION 12, TOWNSHIP 43 SOUTH, RANGE 42 EAST,
CITY OF WEST PALM BEACH, PALM BEACH COUNTY, FLORIDA.

SHEET 6 OF 7

STATE OF FLORIDA 55
COUNTY OF PALM BEACH
THIS PLAT WAS FILED FOR RECORD AT
___ M. THIS ___ DAY OF ___ 2001
AND DULY RECORDED IN PLAT BOOK NO. ___
ON PAGE ___
DOROTHY H. WILKEN,
CLERK OF THE CIRCUIT COURT
BY _____ D.C.

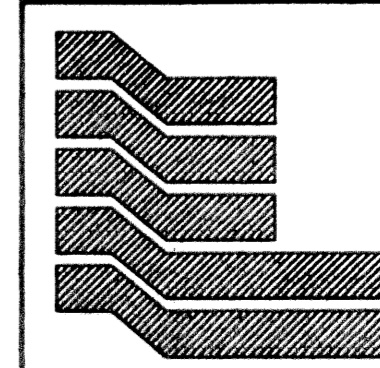
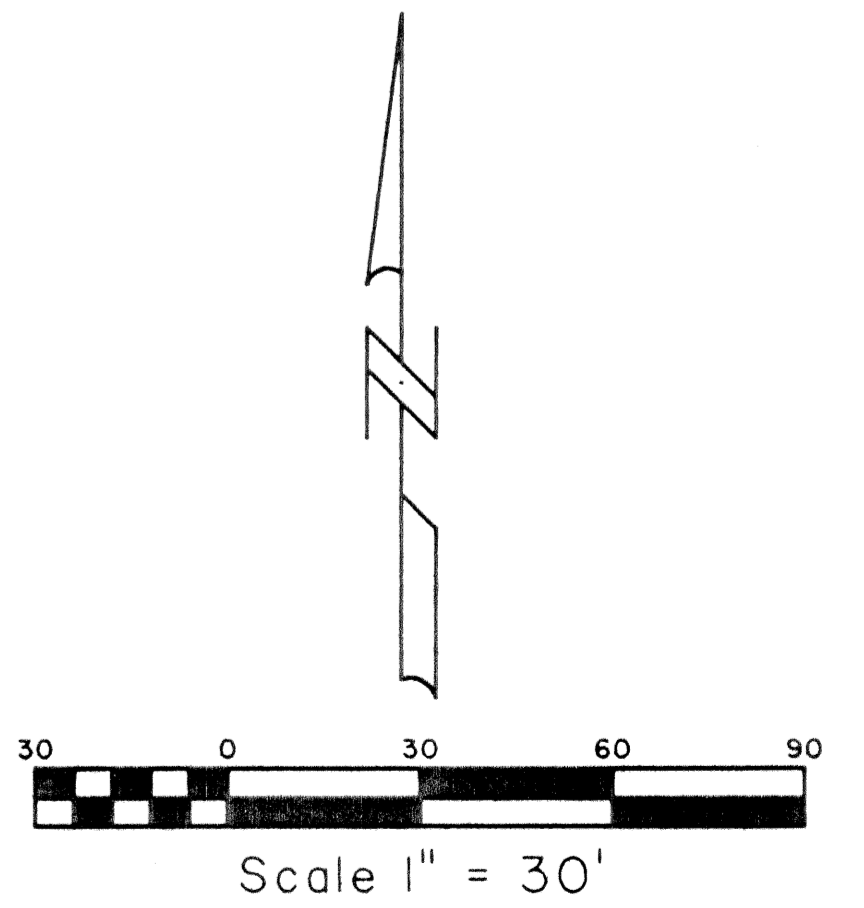
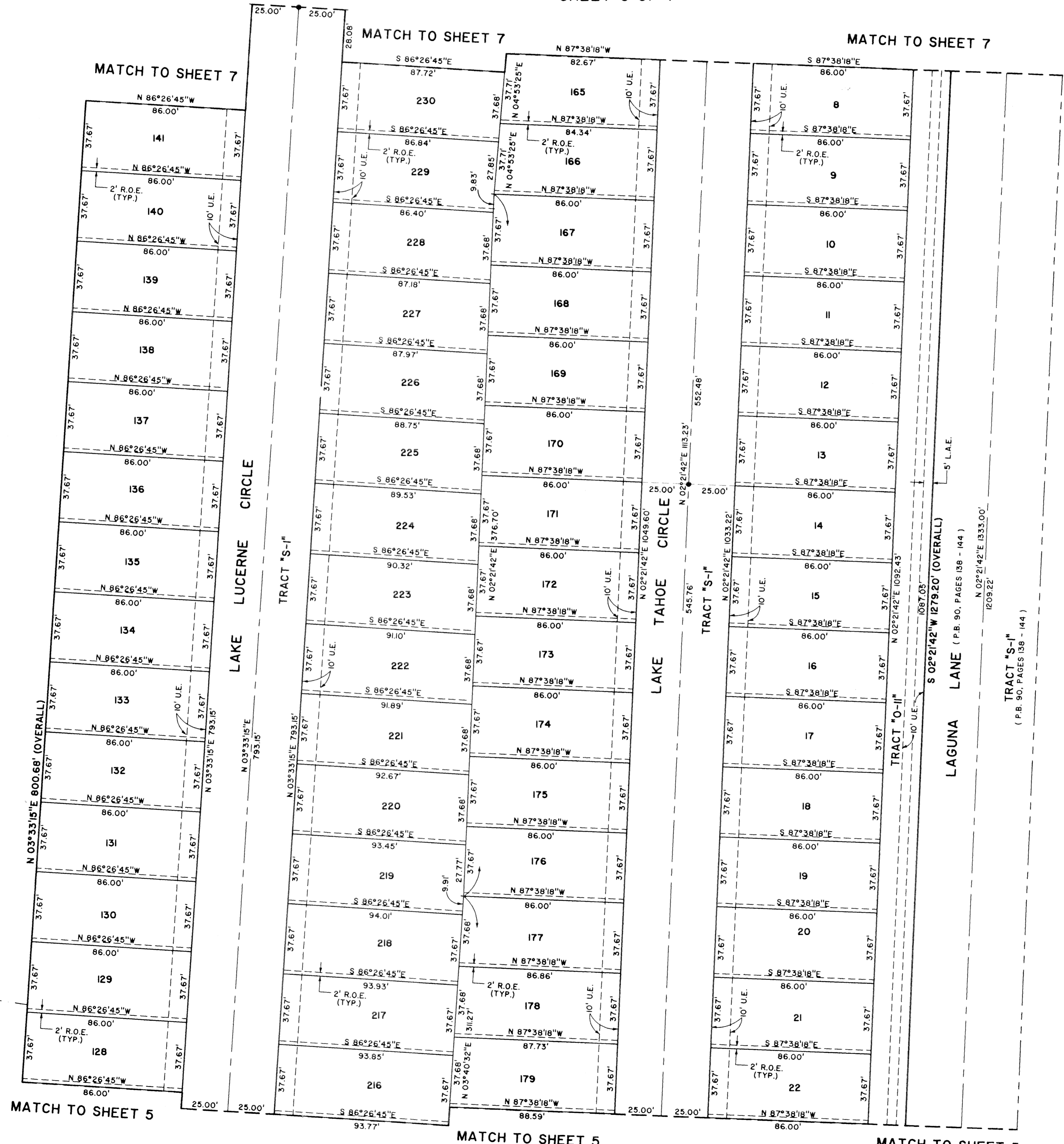


KEY MAP
NOT TO SCALE

TRACT "W-1"
WINDSOR AT PALM BEACH LAKES
(P.B. 89, PAGES 117 - 120)

TRACT "W-1"
SAN MARINO AT BEAR LAKES
(P.B. 92, PAGES 44 - 46)

BRIGER PARCELS B, E, AND F
(P.B. 90, PAGES 138 - 144)



Landmark Surveying & Mapping Inc.
1850 Forest Hill Boulevard
Ph. (561) 433-5405 Suite 100 W.P. Florida
LB # 4396

BRIGER PARCELS G, H, AND J