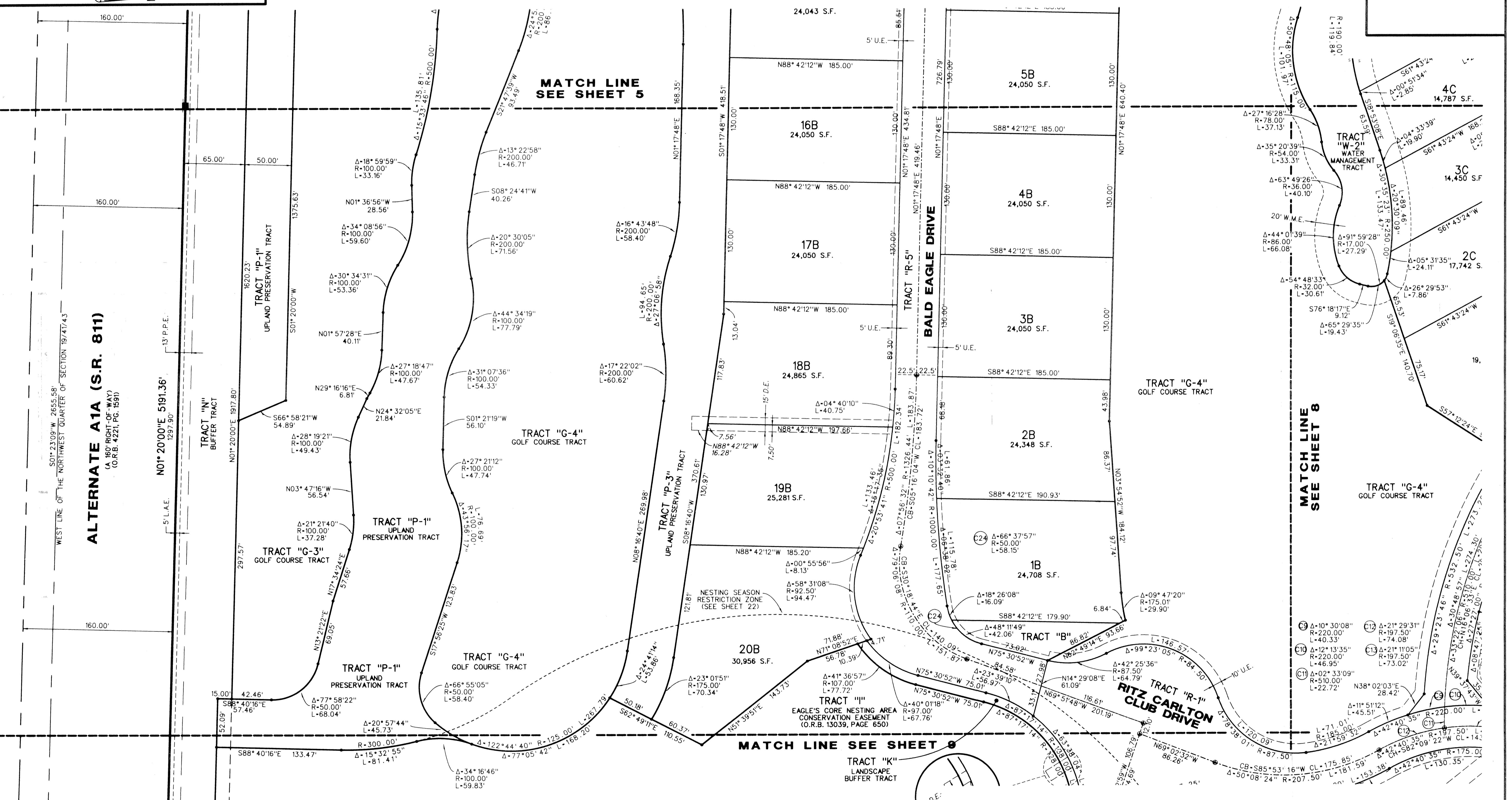
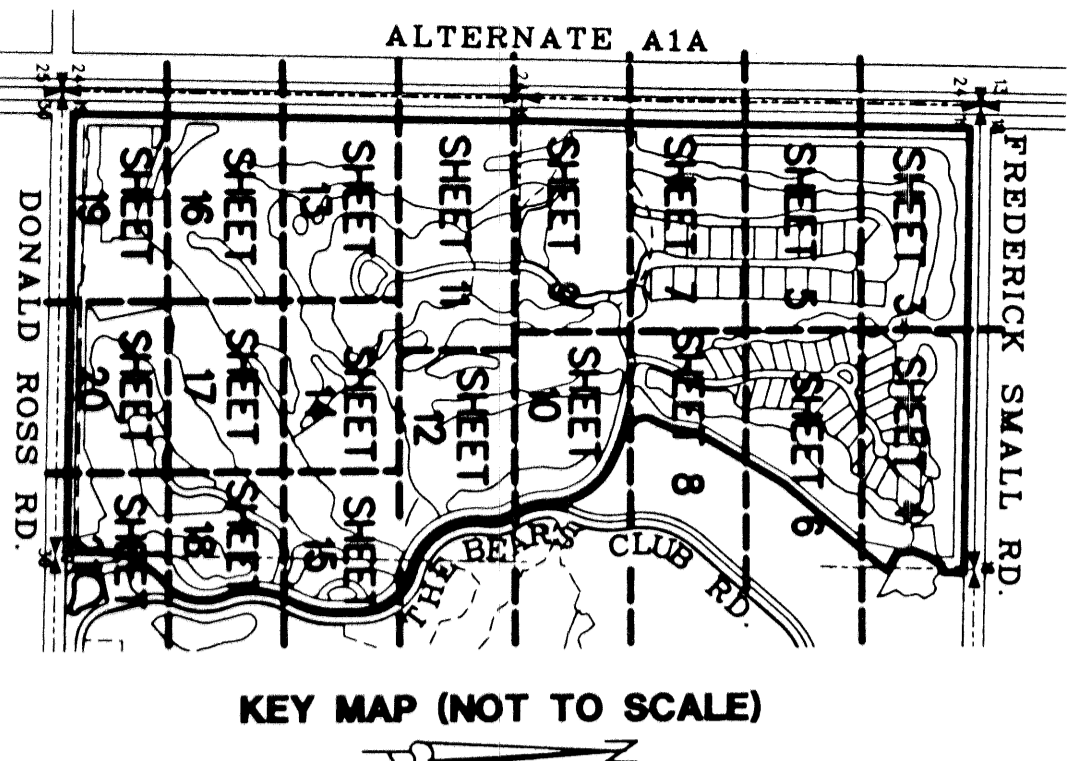
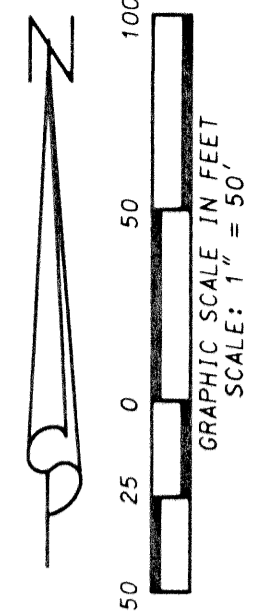


# RITZ-CARLTON GOLF CLUB & SPA, JUPITER, A P.U.D.

SITUATE IN SECTION 19, TOWNSHIP 41 SOUTH, RANGE 43 EAST, TOWN OF JUPITER, PALM BEACH COUNTY, FLORIDA  
DECEMBER, 2001  
SHEET 7 OF 22



ALTERNATE A1A (S.R. 811)  
(A 160' RIGHT-OF-WAY)  
(O.R.B. 4221, PG. 1591)

MATCH LINE SEE SHEET 8

MATCH LINE SEE SHEET 8

**LIDBERG LAND SURVEYING, INC.**  
 675 West Indiantown Road, Suite 200,  
 Jupiter, Florida 33458 TEL. 561-746-8454

CAD. K:\UST \ 194143 \ RITZ \ 1690306 \ SHEET7.DGN			
REF. K:\UST \ 194143 \ RITZ \ 1690306 \ 1690306.DGN			
FLD. -	FB. -	PG. -	JOB 00-169-306
OFF. R.W. -			DATE 04/28/01
CKD. D.C.L.	SHEET 7 OF 22	DWG. D00-169P	