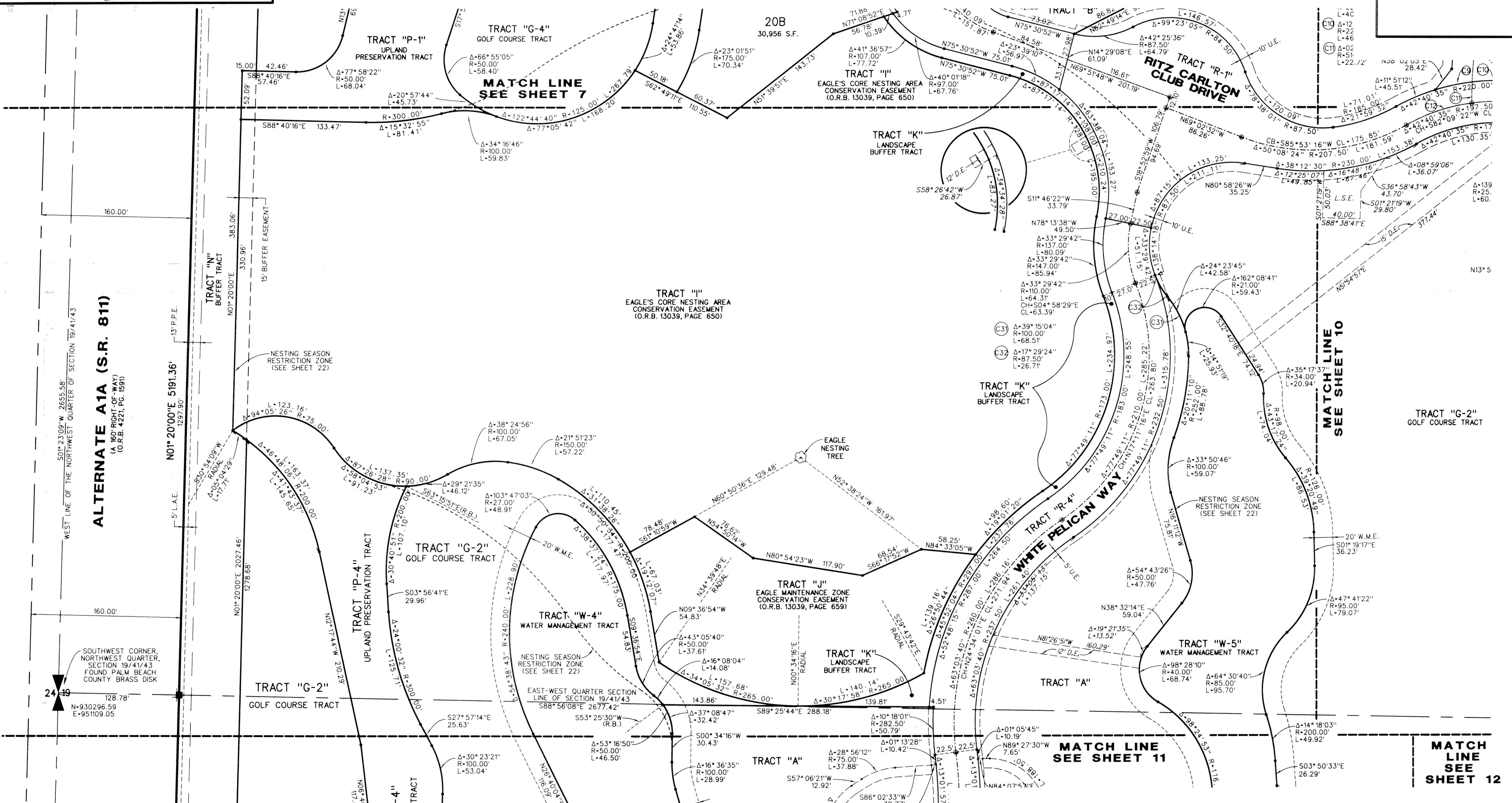
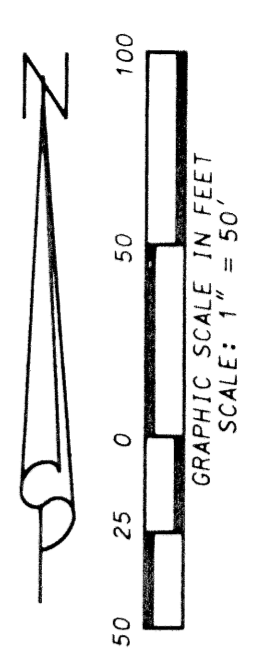
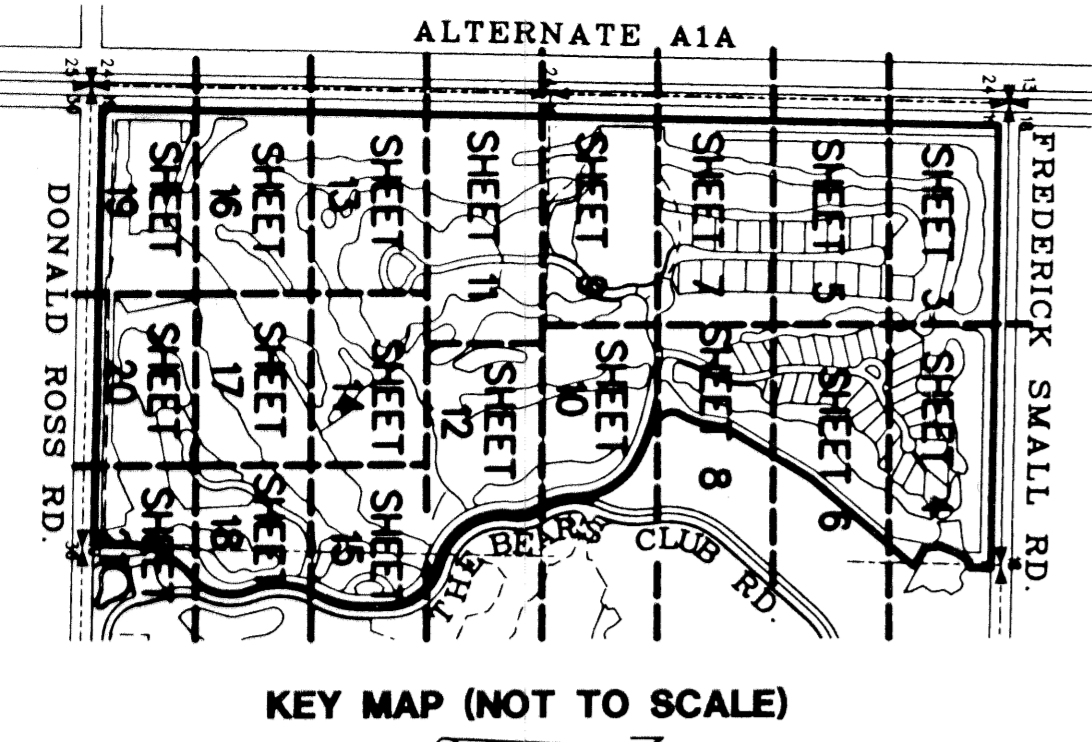


RITZ-CARLTON GOLF CLUB & SPA, JUPITER, A P.U.D.

SITUATE IN SECTION 19, TOWNSHIP 41 SOUTH, RANGE 43 EAST,
TOWN OF JUPITER, PALM BEACH COUNTY, FLORIDA
DECEMBER, 2001
SHEET 9 OF 22



ALTERNATE A1A (S.R. 811)
(A 160' RIGHT-OF-WAY)
(O.R.B. 4.221, PG. 158)

SOUTHWEST CORNER,
NORTHWEST QUARTER,
SECTION 19/41/43
FOUND PALM BEACH
COUNTY BRASS DISK

LIDBERG LAND SURVEYING, INC.
 675 West Indian Town Road, Suite 200,
 Jupiter, Florida 33458 TEL. 561-746-8454

CAD. K:\UST\194143\RITZ\1690306\SHEET9.DGN			
REF. K:\UST\194143\RITZ\1690306\1690306.DGN			
FLD.	FB.	PG.	JOB 00-169-306
OFF. R.W.			DATE 04/28/01
CKD. D.C.L.	SHEET 9	OF 22	DWG. D00-169P

11/26/01 02:30:54 PM