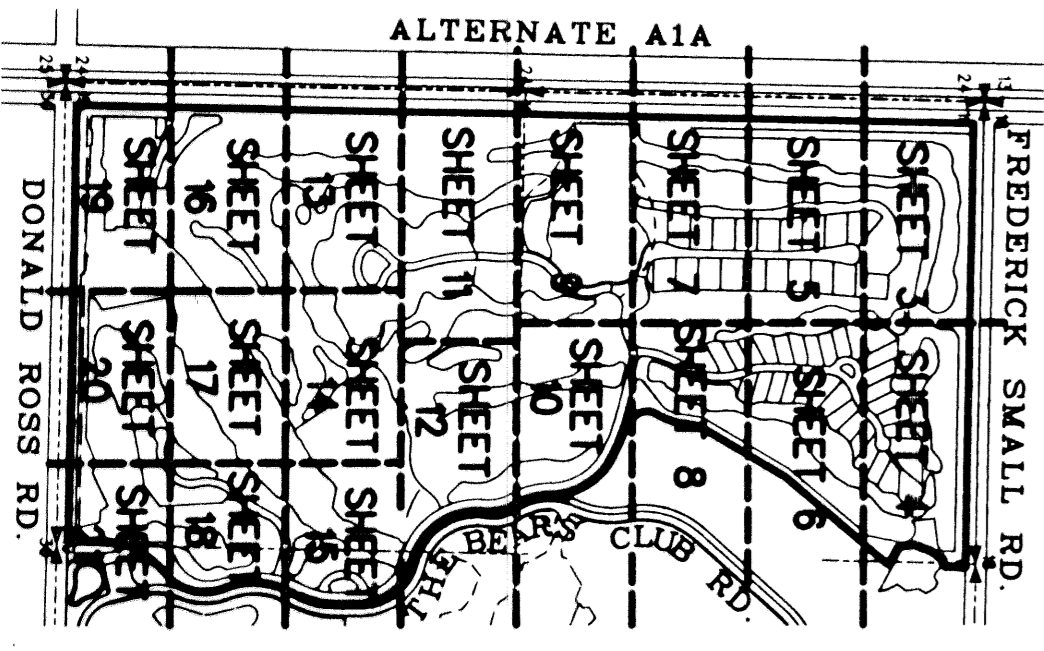
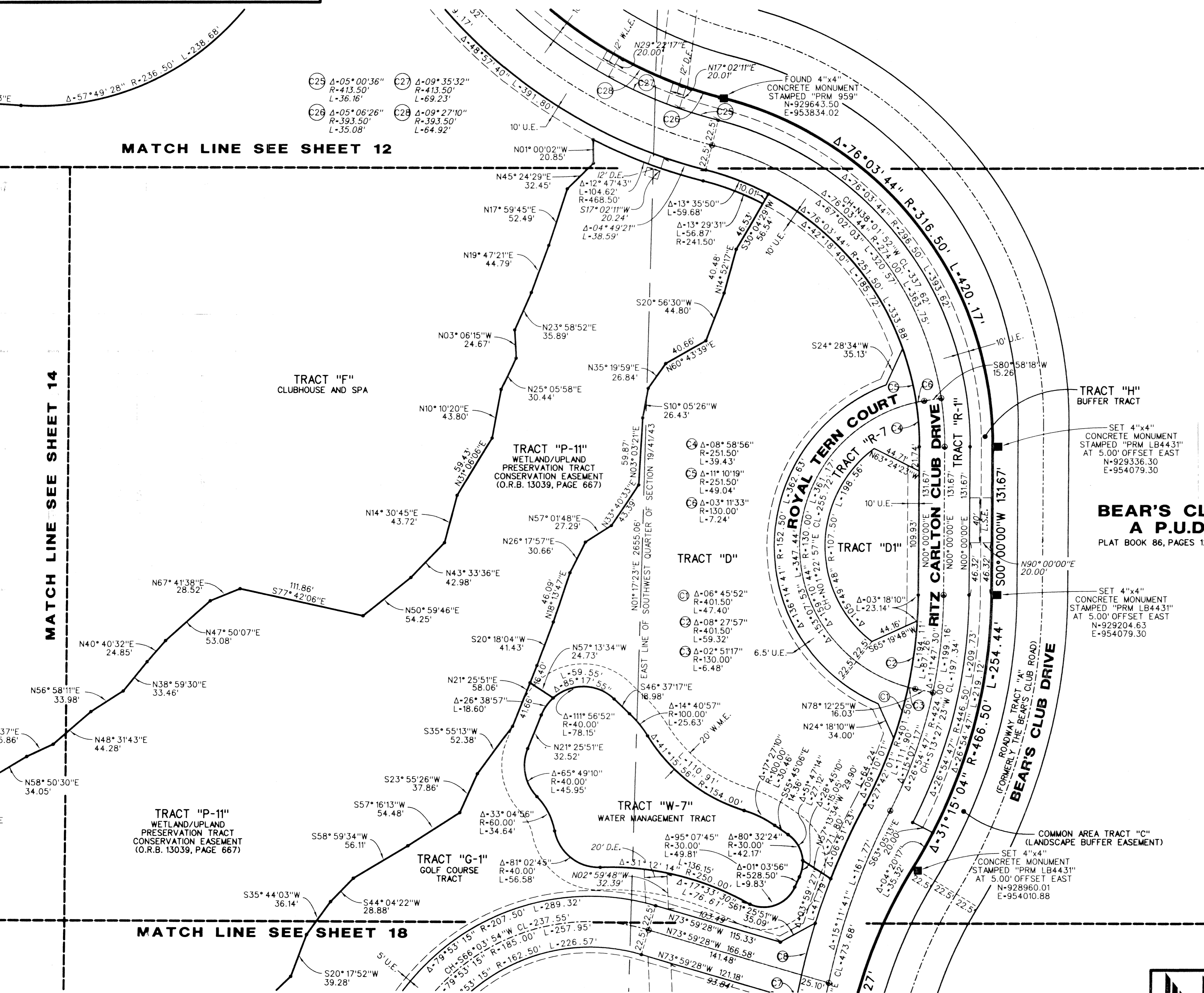


# RITZ-CARLTON GOLF CLUB & SPA, JUPITER, A P.U.D.

SITUATE IN SECTION 19, TOWNSHIP 41 SOUTH, RANGE 43 EAST, TOWN OF JUPITER, PALM BEACH COUNTY, FLORIDA  
DECEMBER, 2001  
SHEET 15 OF 22



KEY MAP (NOT TO SCALE)



MATCH LINE SEE SHEET 12

MATCH LINE SEE SHEET 14

MATCH LINE SEE SHEET 18

**BEAR'S CLUB, A P.U.D.**  
PLAT BOOK 86, PAGES 122-128

**LIDBERG LAND SURVEYING, INC.**  
675 West Indiantown Road, Suite 200, Jupiter, Florida 33458 TEL. 561-746-8454

CAD. K:\UST\194143\RTZ\1690306\SHEET15.DGN			
REF. K:\UST\194143\RTZ\1690306\1690306.DGN			
FLD. -	FB. -	PG. -	JOB 00-169-306
OFF. R.W.	-	-	DATE 04/28/01
CKD. D.C.L.	SHEET 15 OF 22	DWG. D00-169P	