

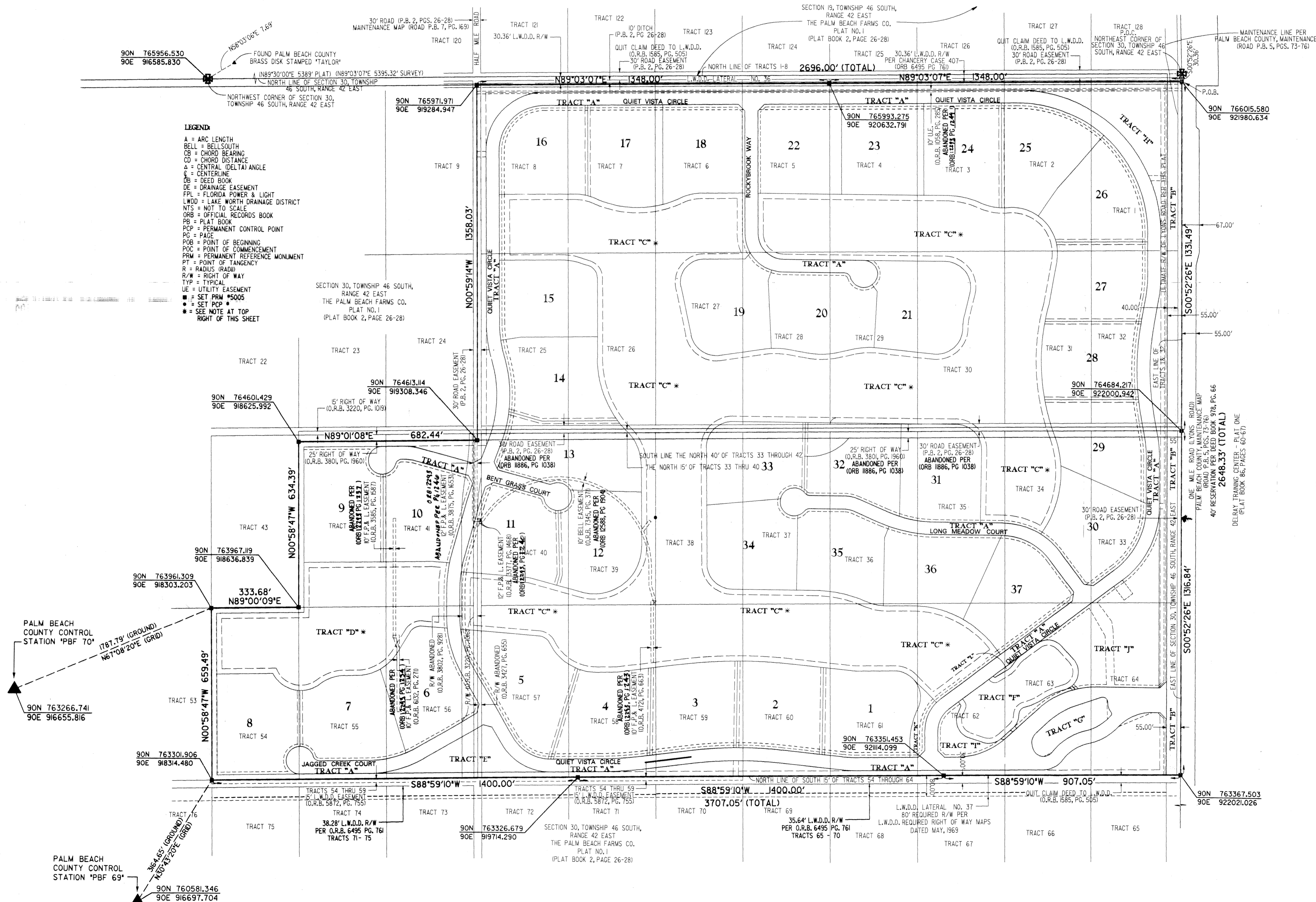
KENCO RANCH

BEING A REPLAT OF A PART OF TRACTS 1, 2, 3, 4, 5, 6, 7, 8, 41, 42, AND ALL OF TRACTS 25, 26, 27, 28, 29, 30, 31, 32, 33, 34, 35, 36, 37, 38, 39, 40, 54, 55, 56, 57, 58, 59, 60, 61, 62, 63, AND 64, PALM BEACH FARMS CO. PLAT NO. 1, AS RECORDED IN PLAT BOOK 2, PAGES 26 THRU 28 OF THE PUBLIC RECORDS OF PALM BEACH COUNTY, FLORIDA, SITUATED IN SECTION 30, TOWNSHIP 46 SOUTH, RANGE 42 EAST, PALM BEACH COUNTY, FLORIDA
 SHEET 3 OF 12
 SEPTEMBER 2001

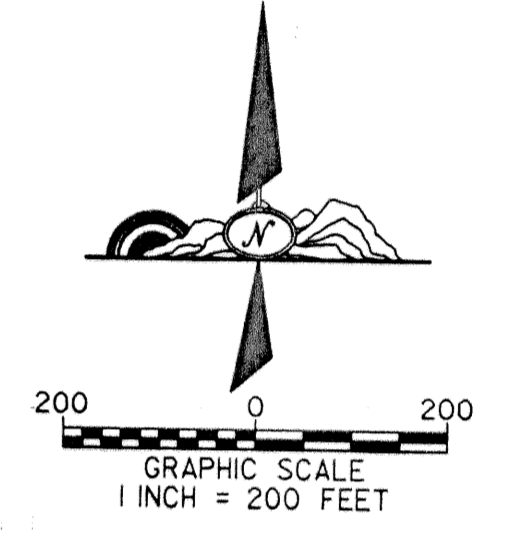
STATE OF FLORIDA
 COUNTY OF PALM BEACH
 THIS PLAT WAS FILED FOR
 RECORD AT _____ DAY OF
 THIS _____ AD, 2001 AND
 DULY RECORDED IN PLAT BOOK
 _____ ON PAGES _____ THRU

 DOROTHY H. WILKEN, CLERK
 CIRCUIT COURT
 BY: _____ DC

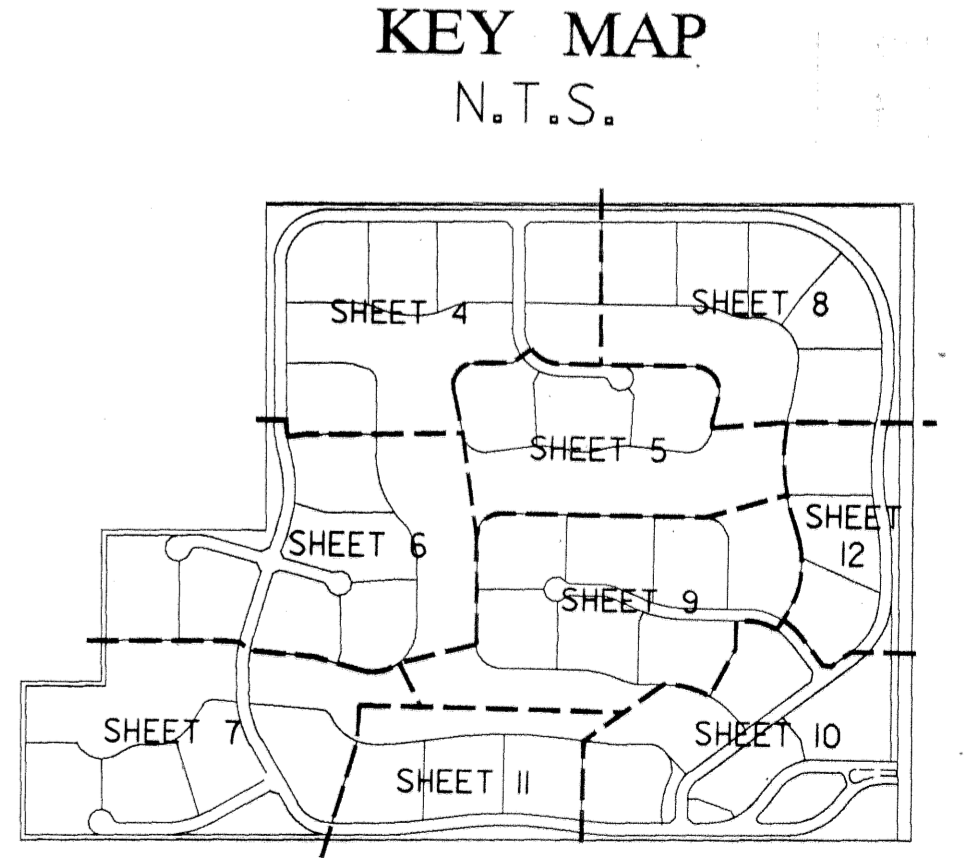
* NOTE: WATER MANAGEMENT TRACT TO BE MAINTAINED BY THE STONE CREEK HOMEOWNERS ASSOCIATION, INC. SUBJECT TO RESTRICTIVE COVENANT AGREEMENT (O.R.B. 1917, PG. 1200)



LEGEND
 A = ARC LENGTH
 BELL = BELL SOUTH
 CB = CHORD BEARING
 CD = CHORD DISTANCE
 Δ = CENTRAL (DELTA) ANGLE
 C = CENTERLINE
 DB = DEED BOOK
 DE = DRAINAGE EASEMENT
 FPL = FLORIDA POWER & LIGHT
 LWD = LAKE WORTH DRAINAGE DISTRICT
 NTS = NOT TO SCALE
 ORB = OFFICIAL RECORDS BOOK
 PB = PLAT BOOK
 PCP = PERMANENT CONTROL POINT
 PG = PAGE
 POB = POINT OF BEGINNING
 POC = POINT OF COMMENCEMENT
 PRM = PERMANENT REFERENCE MONUMENT
 PT = POINT OF TANGENCY
 R = RADIUS (RAD)
 R/W = RIGHT OF WAY
 TYP = TYPICAL
 UE = UTILITY EASEMENT
 ■ = SET PRM #5005
 ● = SET PCP #
 * = SEE NOTE AT TOP RIGHT OF THIS SHEET



THIS INSTRUMENT WAS PREPARED BY DAVID P. LINDLEY IN THE OFFICES OF CAULFIELD AND WHEELER, INC., 7301A PALMETTO PARK ROAD, SUITE 100A BOCA RATON, FLORIDA 33433.



SUBDIVISION KENCO RANCH
 BOOK 93
 FLOOD ZONE 2
 QUAD # 52
 SS 99-1-14
 TAG 104
 FUD NAME
 PAGE 195
 FLOOD MAP # 215A
 ZONING AGR
 ZIP CODE 33440

CAULFIELD & WHEELER, INC.
 Consulting Engineers - Land Planners - Surveyors
 7301A West Palmetto Park Road - Suite 100A
 Boca Raton, Florida 33433 (561) - 392-1991