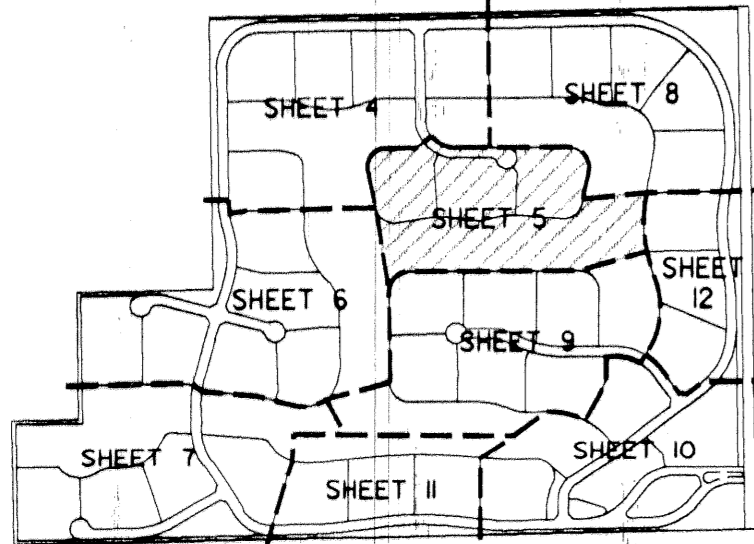


0775-001

KEY MAP  
N.T.S.

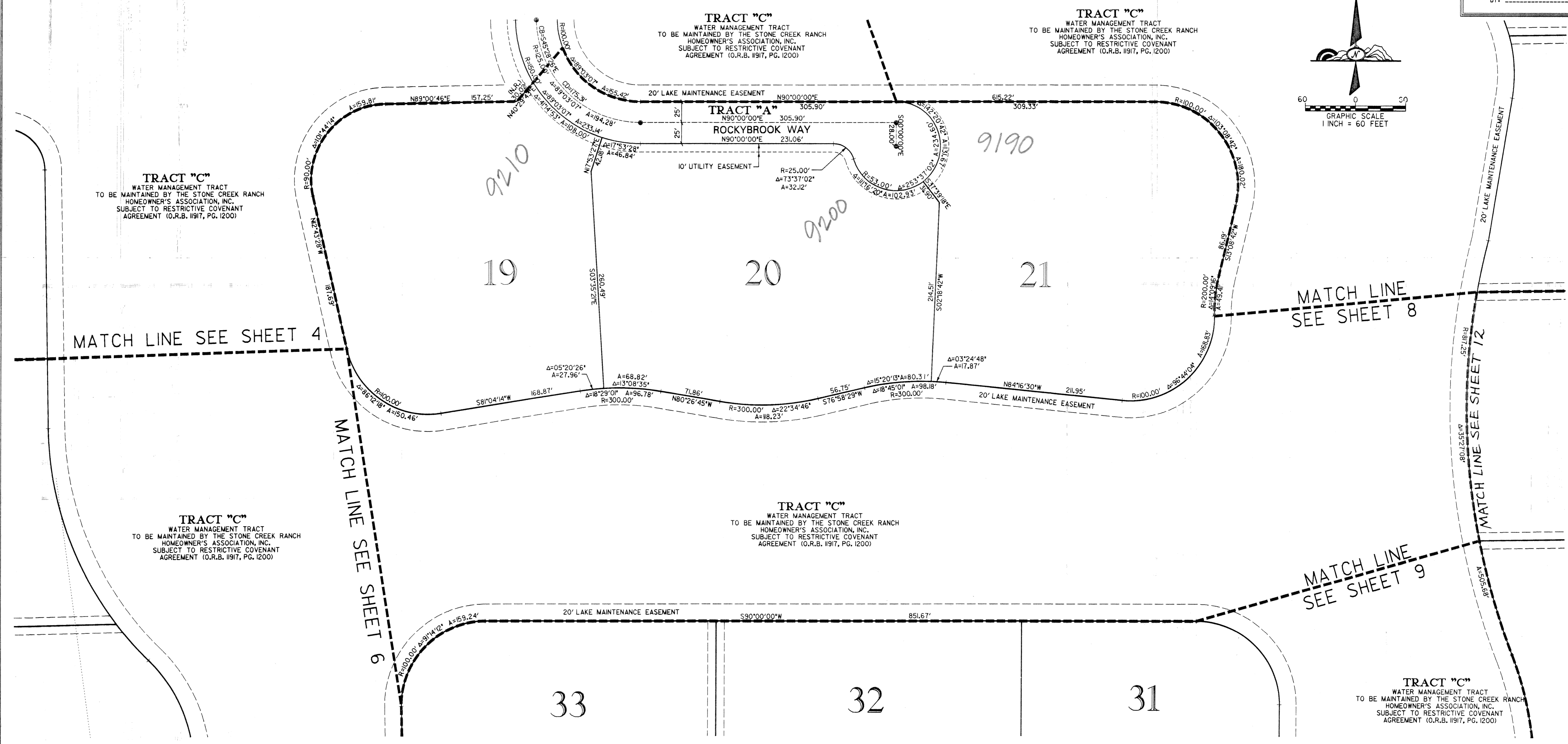
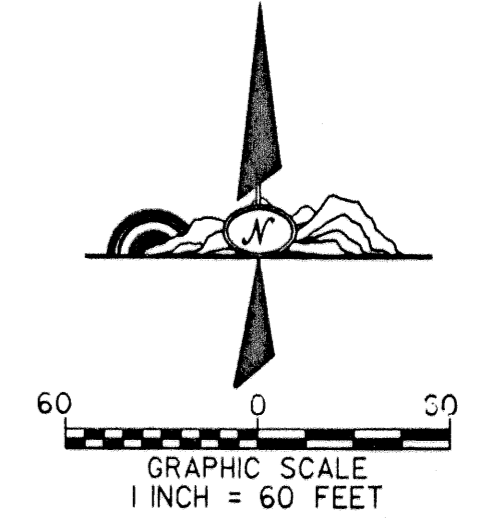


# KENCO RANCH

197


BEING A REPLAT OF A PART OF TRACTS 1, 2, 3, 4, 5, 6, 7, 8, 41, 42, AND ALL OF TRACTS 25, 26, 27, 28, 29, 30, 31, 32, 33, 34, 35, 36, 37, 38, 39, 40, 54, 55, 56, 57, 58, 59, 60, 61, 62, 63, AND 64, PALM BEACH FARMS CO. PLAT NO. 1, AS RECORDED IN PLAT BOOK 2, PAGES 26 THRU 28 OF THE PUBLIC RECORDS OF PALM BEACH COUNTY, FLORIDA, SITUATED IN SECTION 30, TOWNSHIP 46 SOUTH, RANGE 42 EAST, PALM BEACH COUNTY, FLORIDA  
SHEET 5 OF 12  
SEPTEMBER 2001

STATE OF FLORIDA } S.S.  
COUNTY OF PALM BEACH }  
THIS PLAT WAS FILED FOR  
RECORD AT \_\_\_\_\_ DAY OF  
THIS \_\_\_\_\_ AD, 2001 AND  
DULY RECORDED IN PLAT BOOK  
\_\_\_\_\_ ON PAGES \_\_\_\_\_ THRU  
DOROTHY H. WILKEN, CLERK  
CIRCUIT COURT  
BY: \_\_\_\_\_ DC



SUBDIVISION KENCO RANCH  
BOOK 97 PAGE 197  
FLOOD ZONE 2154  
QUAD # 52 ZONING 49E  
SR 99-1214 ZIP CODE 33446  
TAZ 763  
PUD NAME

THIS INSTRUMENT WAS PREPARED BY DAVID P. LINDLEY IN THE OFFICES OF CAULFIELD AND WHEELER, INC., 7301A PALMETTO PARK ROAD, SUITE 100A BOCA RATON, FLORIDA 33433.

 CAULFIELD & WHEELER, INC.  
Consulting Engineers - Land Planners - Surveyors  
7301A West Palmetto Park Road - Suite 100A  
Boca Raton, Florida 33433 (561) - 392-1991

SCALE FACTOR: 1.0000206