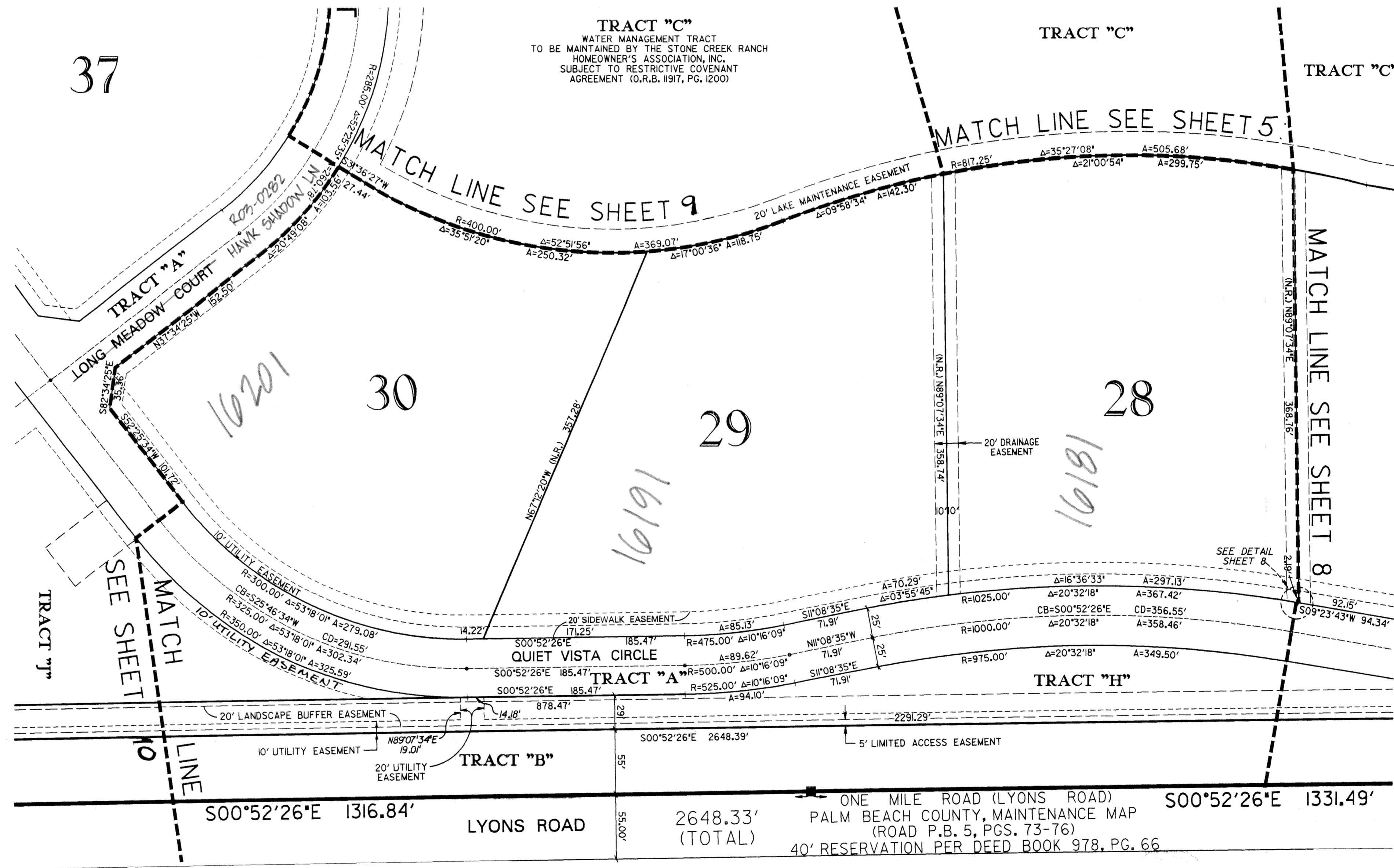
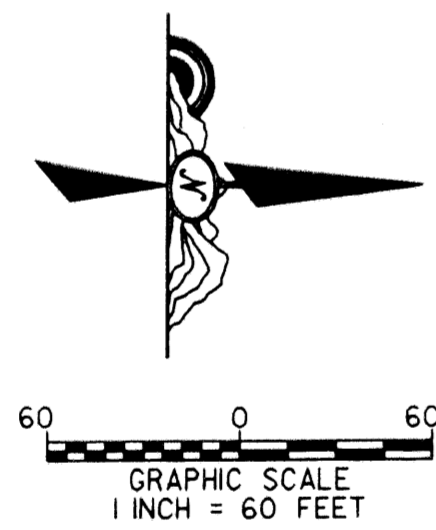


KENCO RANCH

BEING A REPLAT OF A PART OF TRACTS 1, 2, 3, 4, 5, 6, 7, 8, 41, 42, AND ALL OF TRACTS 25, 26, 27, 28, 29, 30, 31, 32, 33, 34, 35, 36, 37, 38, 39, 40, 54, 55, 56, 57, 58, 59, 60, 61, 62, 63, AND 64, PALM BEACH FARMS CO. PLAT NO. 1, AS RECORDED IN PLAT BOOK 2, PAGES 26 THRU 28 OF THE PUBLIC RECORDS OF PALM BEACH COUNTY, FLORIDA, SITUATED IN SECTION 30, TOWNSHIP 46 SOUTH, RANGE 42 EAST, PALM BEACH COUNTY, FLORIDA
SHEET 12 OF 12
SEPTEMBER 2001

STATE OF FLORIDA } S.S.
COUNTY OF PALM BEACH }
THIS PLAT WAS FILED FOR
RECORD AT _____ DAY OF
_____ AD, 2001 AND
DULY RECORDED IN PLAT BOOK
_____ ON PAGES _____ THRU

DOROTHY H. WILKEN, CLERK
CIRCUIT COURT
BY: _____ DC



SUBDIVISION: KENCO RANCH
BOOK: 93
PAGE: 204
FLOOD MAP #: 215A
QUAD #: 52
ZONING: AGR
SE: 99-12-14
TAZ: 703
FUD NAME:

DELRAY TRAINING CENTER - PLAT ONE
(PLAT BOOK 86, PAGES 60-67)

THIS INSTRUMENT WAS PREPARED BY DAVID P. LINDLEY IN THE OFFICES OF CAULFIELD AND WHEELER, INC., 7301A PALMETTO PARK ROAD, SUITE 100A BOCA RATON, FLORIDA 33433.

CAULFIELD & WHEELER, INC.
Consulting Engineers - Land Planners - Surveyors
7301A West Palmetto Park Road - Suite 100A
Boca Raton, Florida 33433 (561) - 392-1991