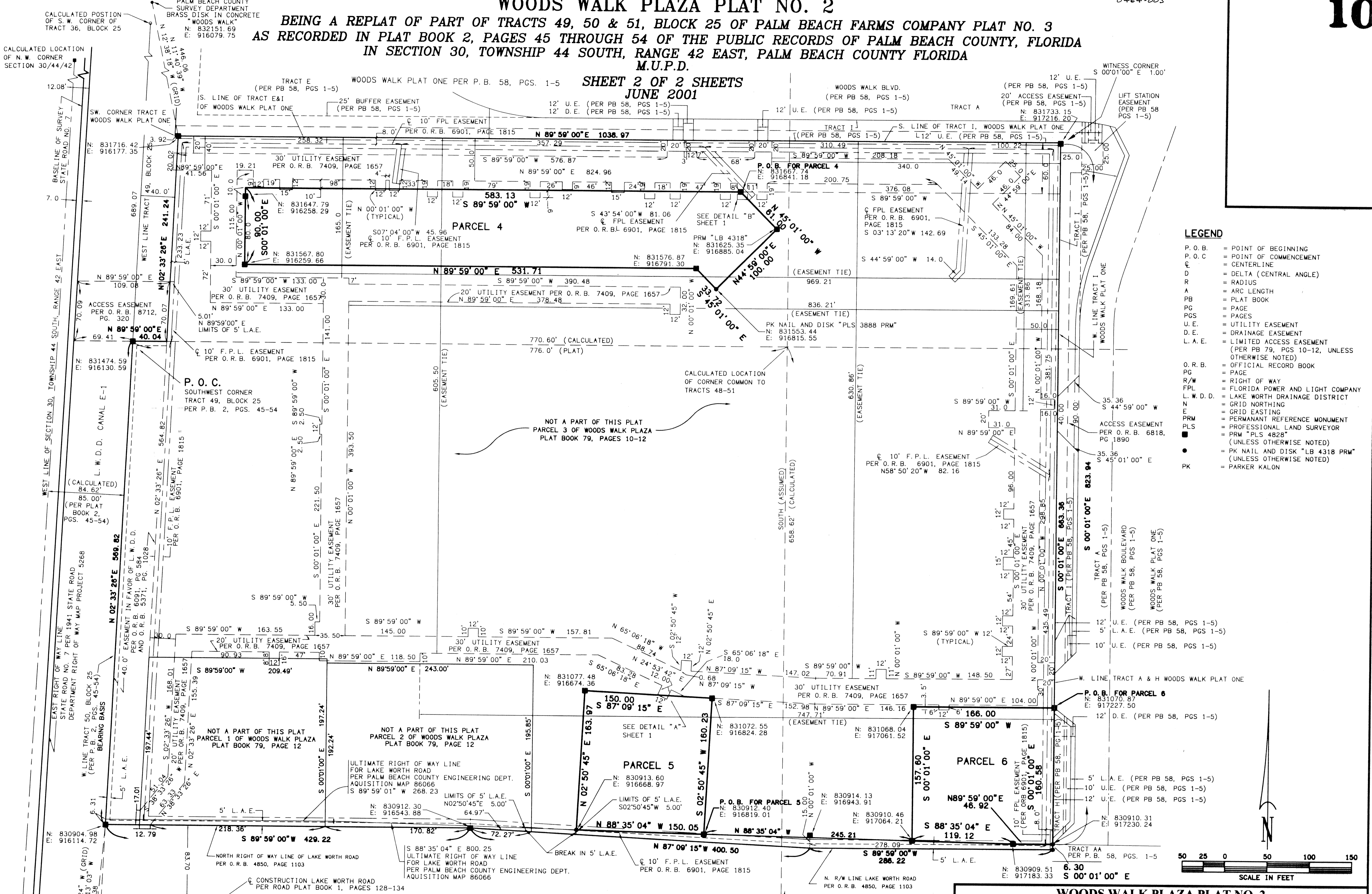


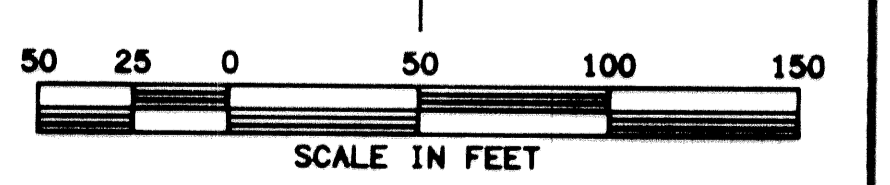
WOODS WALK PLAZA PLAT NO. 2

BEING A REPLAT OF PART OF TRACTS 49, 50 & 51, BLOCK 25 OF PALM BEACH FARMS COMPANY PLAT NO. 3 AS RECORDED IN PLAT BOOK 2, PAGES 45 THROUGH 54 OF THE PUBLIC RECORDS OF PALM BEACH COUNTY, FLORIDA IN SECTION 30, TOWNSHIP 44 SOUTH, RANGE 42 EAST, PALM BEACH COUNTY FLORIDA M.U.P.D.

SHEET 2 OF 2 SHEETS
JUNE 2001



- LEGEND**
- P.O.B. = POINT OF BEGINNING
 - P.O.C. = POINT OF COMMENCEMENT
 - CL = CENTERLINE
 - Δ = DELTA (CENTRAL ANGLE)
 - R = RADIUS
 - A = ARC LENGTH
 - PB = PLAT BOOK
 - PG = PAGE
 - PGS = PAGES
 - U.E. = UTILITY EASEMENT
 - D.E. = DRAINAGE EASEMENT
 - L.A.E. = LIMITED ACCESS EASEMENT (PER PB 79, PGS 10-12, UNLESS OTHERWISE NOTED)
 - O.R.B. = OFFICIAL RECORD BOOK
 - PG = PAGE
 - R/W = RIGHT OF WAY
 - F.P.L. = FLORIDA POWER AND LIGHT COMPANY
 - L.W.D.D. = LAKE WORTH DRAINAGE DISTRICT
 - N = GRID NORTHING
 - E = GRID EASTING
 - PRM = PERMANENT REFERENCE MONUMENT
 - PLS = PROFESSIONAL LAND SURVEYOR
 - PK = PK NAIL AND DISK "LB 4318 PRM" (UNLESS OTHERWISE NOTED)
 - PK = PARKER KALON



WOODS WALK PLAZA PLAT NO. 2

NICK MILLER, INC.
Surveying & Mapping Consultants

SUITE 105
2560 RCA BLVD.
PALM BEACH GARDENS, FLORIDA 33410
TEL 561 627-5200 FAX 561 627-0983
D.B.P.R. LICENSED BUSINESS No. 4318

SHEET NO. **2**

SCALE: 1" = 50'

DATE: JUNE 2001

JOB NO. 89046BP

FILE: 89046BP.DWG

UNPLATTED