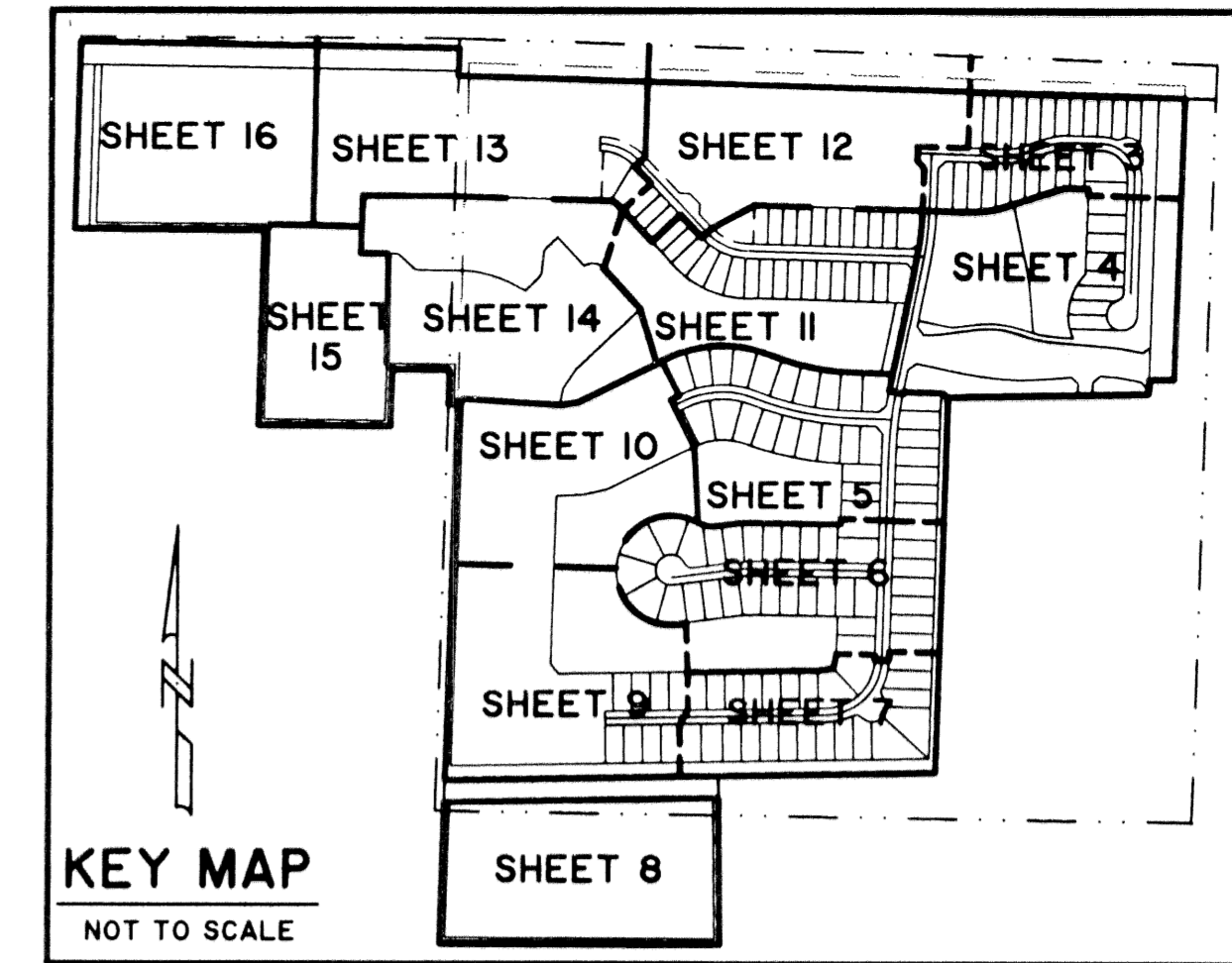
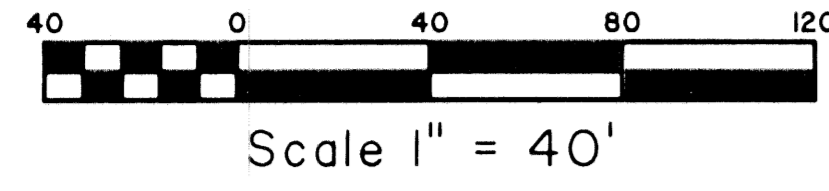
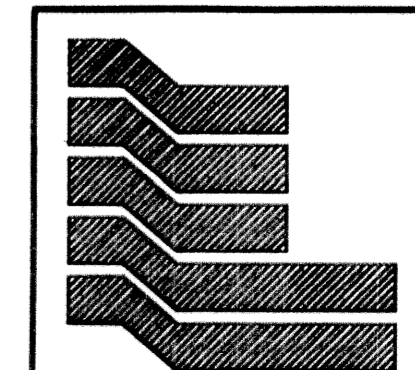
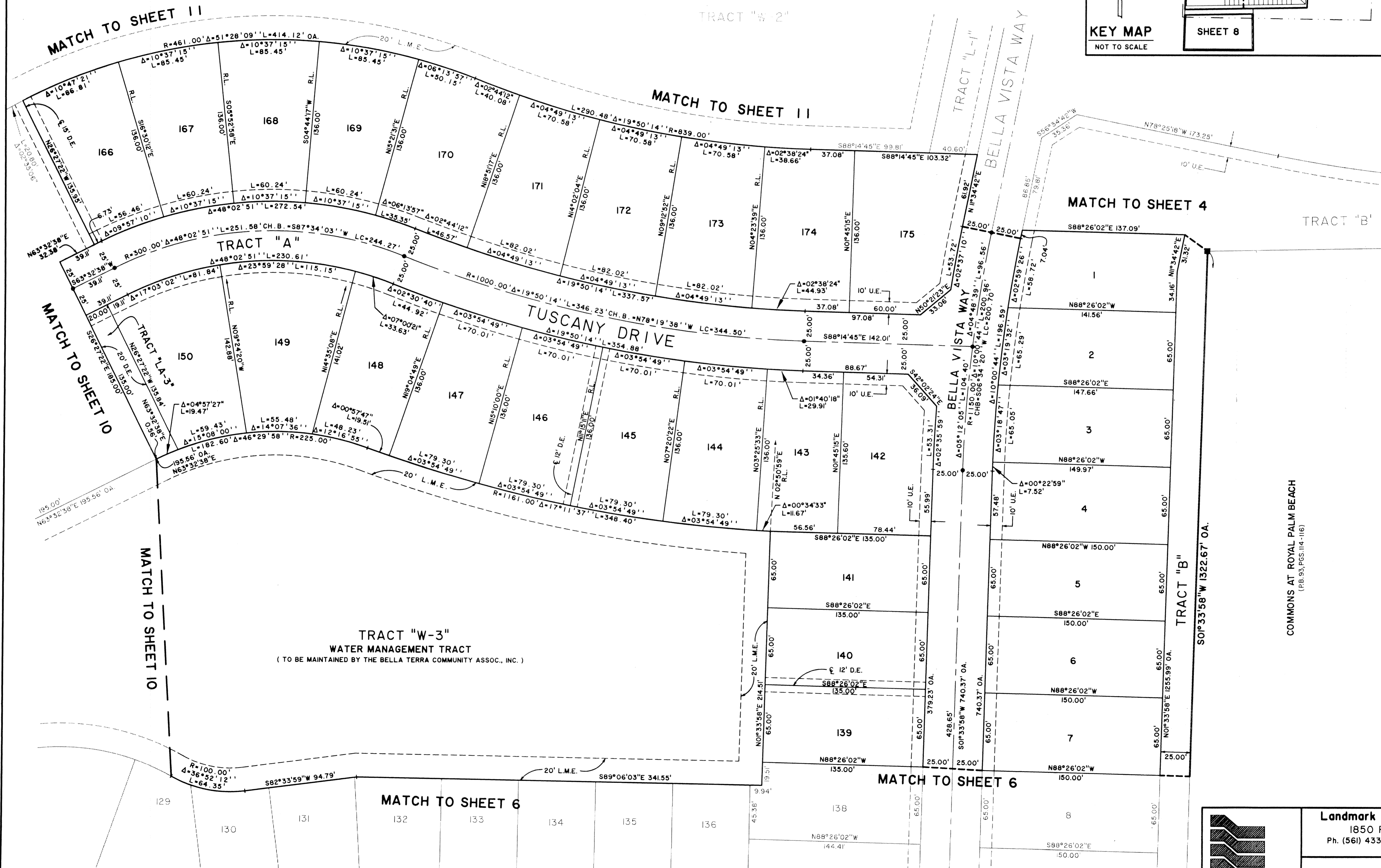


BELLA TERRA P.U.D. PLAT NO. 1

BEING A REPLAT OF A PORTION OF BLOCK 9, PALM BEACH FARMS COMPANY PLAT NO. 3, AS RECORDED IN PLAT BOOK 2, PAGES 45 THROUGH 54, PUBLIC RECORDS OF PALM BEACH COUNTY, FLORIDA AND A PORTION OF SECTION 36, TOWNSHIP 43 SOUTH RANGE 41 EAST, VILLAGE OF ROYAL PALM BEACH, PALM BEACH COUNTY, FLORIDA.
 FEBRUARY, 2002 SHEET 5 OF 16



STATE OF FLORIDA SS
 COUNTY OF PALM BEACH
 THIS PLAT WAS FILED FOR RECORD AT _____
 M. THIS ____ DAY OF _____ 2002
 AND DULY RECORDED IN PLAT BOOK NO. _____
 ON PAGE _____
 DOROTHY H. WILKEN, CLERK OF THE CIRCUIT COURT
 BY _____ D.C.



Landmark Surveying & Mapping Inc.
 1850 Forest Hill Boulevard
 Ph. (561) 433-5405 Suite 100 W.P.B. Florida
 LB # 4396

BELLA TERRA P.U.D. PLAT NO. 1