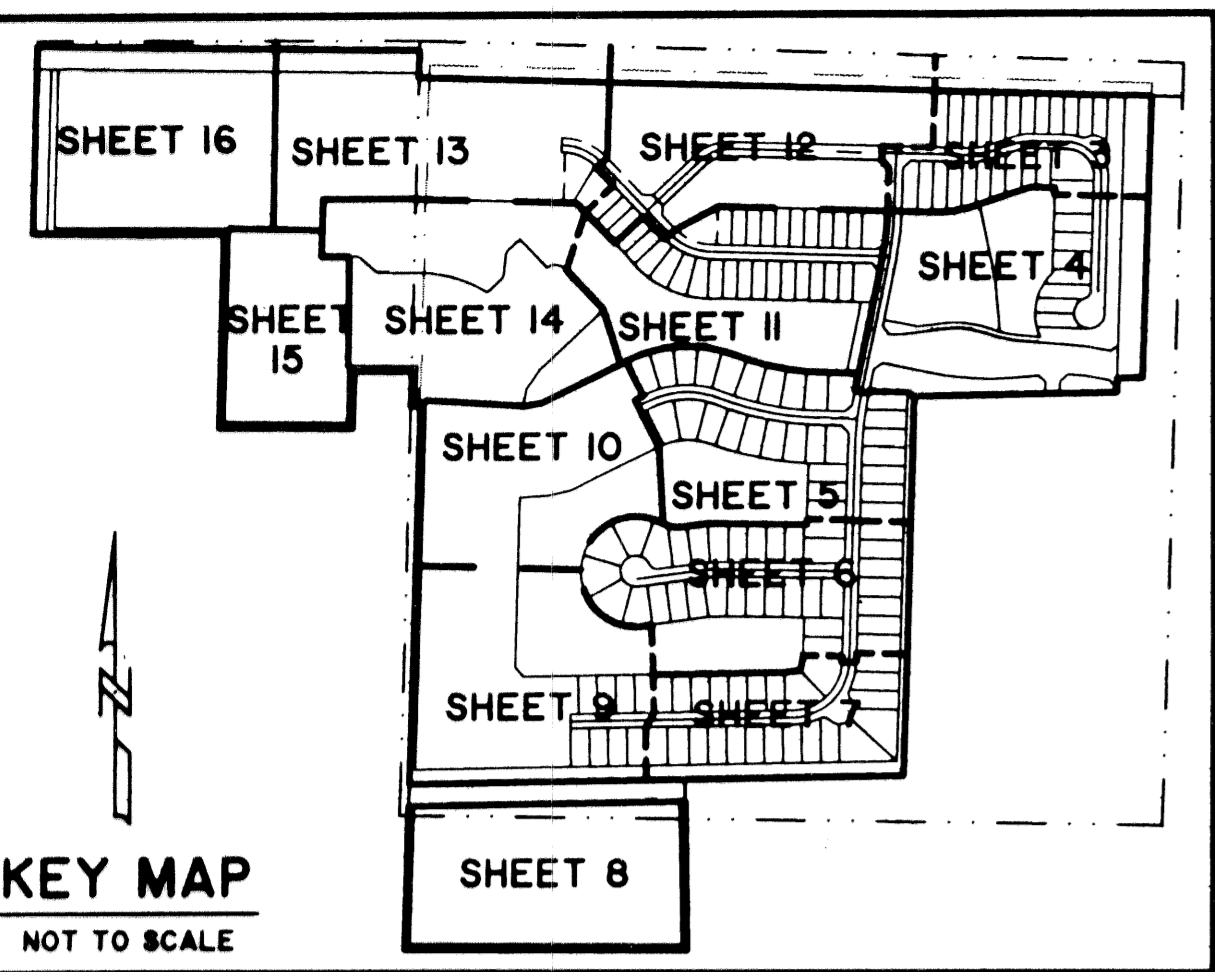


BELLA TERRA P.U.D. PLAT NO. 1

BEING A REPLAT OF A PORTION OF BLOCK 9, PALM BEACH FARMS COMPANY PLAT NO. 3, AS RECORDED IN PLAT BOOK 2, PAGES 45 THROUGH 54, PUBLIC RECORDS OF PALM BEACH COUNTY, FLORIDA AND A PORTION OF SECTION 36, TOWNSHIP 43 SOUTH RANGE 41 EAST, VILLAGE OF ROYAL PALM BEACH, PALM BEACH COUNTY, FLORIDA.

FEBRUARY, 2002 SHEET 8 OF 16

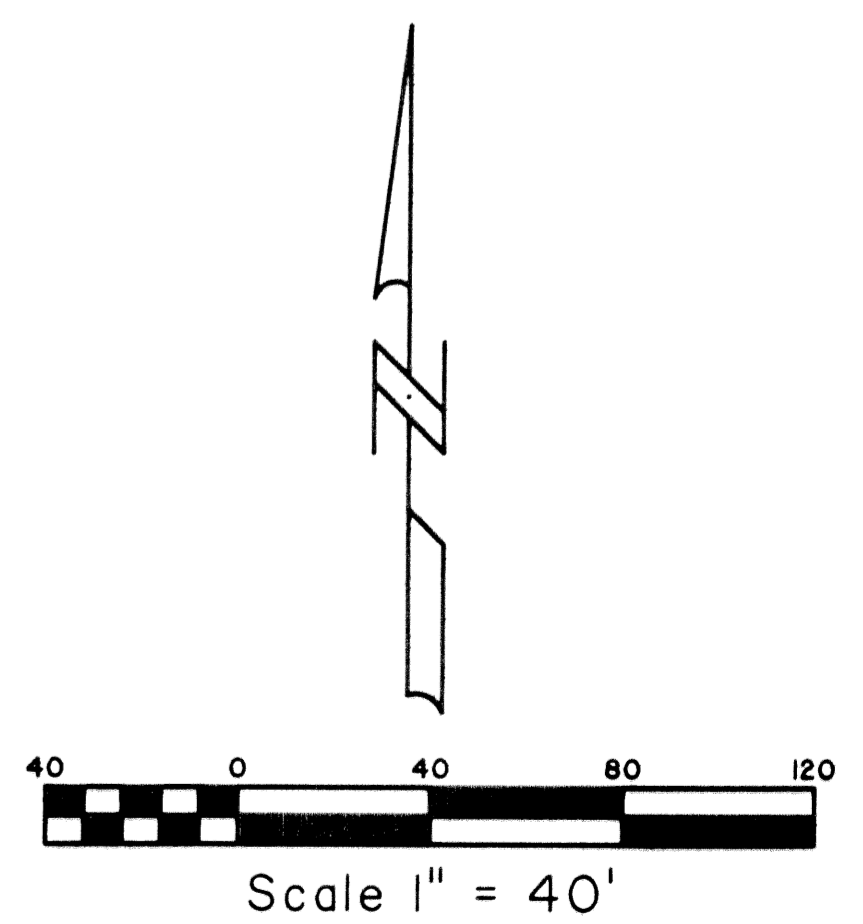
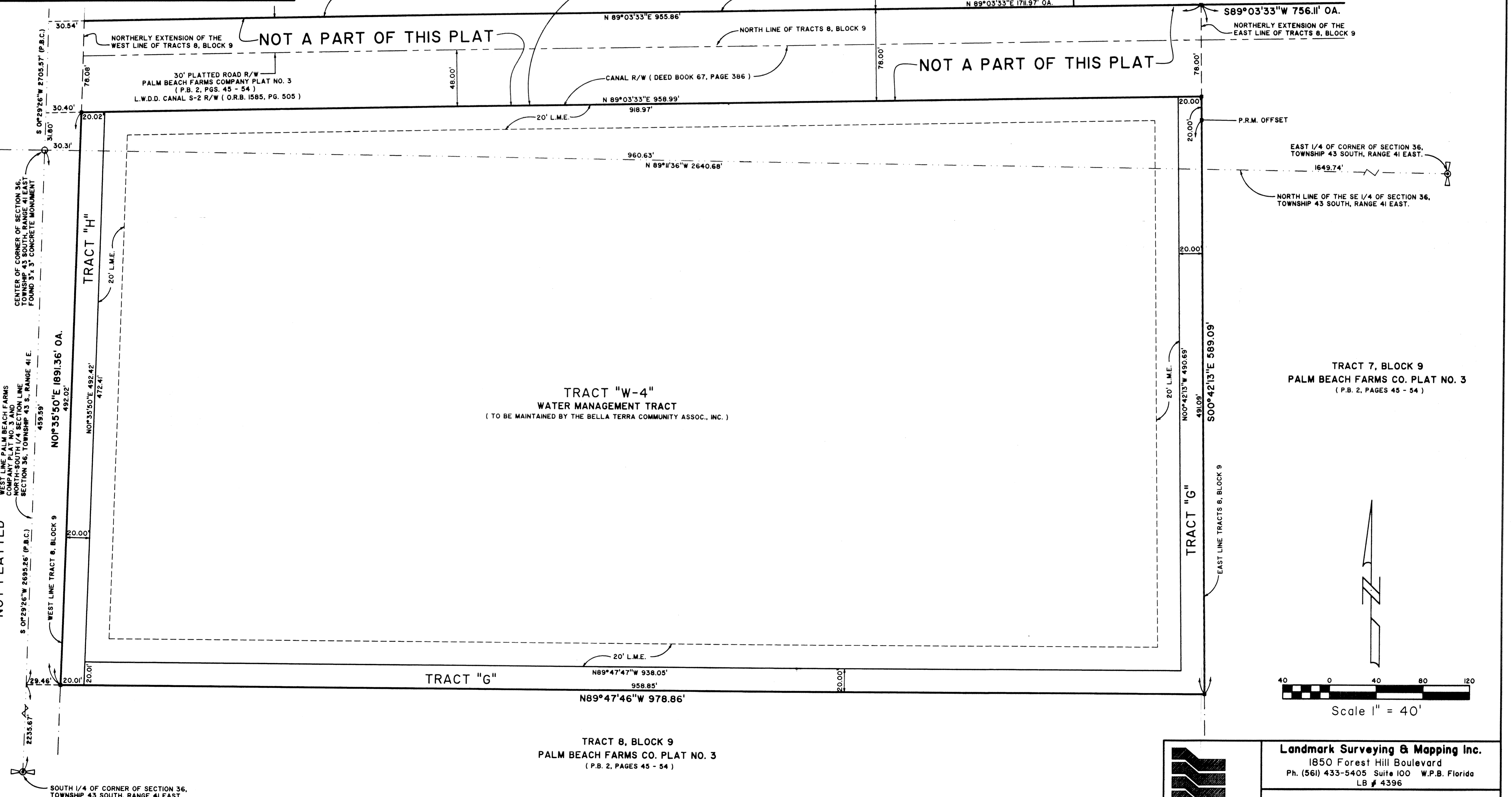


STATE OF FLORIDA SS
COUNTY OF PALM BEACH
THIS PLAT WAS FILED FOR RECORD AT _____
_____, M., THIS _____ DAY OF _____ 2002
AND DULY RECORDED IN PLAT BOOK NO. _____
ON PAGE _____
DOROTHY H. WILKEN, CLERK OF THE CIRCUIT COURT
BY _____ D.C.

TRACT "F" MATCH TO SHEET 9

MATCH TO SHEET 7

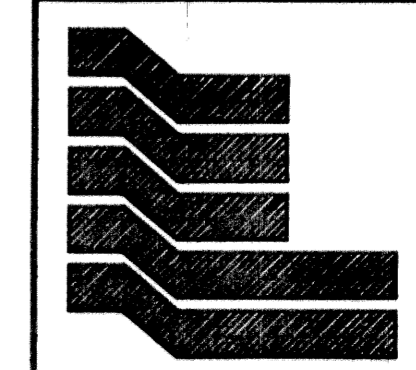
KEY MAP
NOT TO SCALE



TRACT 7, BLOCK 9
PALM BEACH FARMS CO. PLAT NO. 3
(P.B. 2, PAGES 45 - 54)

TRACT "W-4"
WATER MANAGEMENT TRACT
(TO BE MAINTAINED BY THE BELLA TERRA COMMUNITY ASSOC., INC.)

TRACT 8, BLOCK 9
PALM BEACH FARMS CO. PLAT NO. 3
(P.B. 2, PAGES 45 - 54)



Landmark Surveying & Mapping Inc.
1850 Forest Hill Boulevard
Ph. (561) 433-5405 Suite 100 W.P.B. Florida
LB # 4396

BELLA TERRA P.U.D. PLAT NO. 1